

# KuroLok RL Characteristics

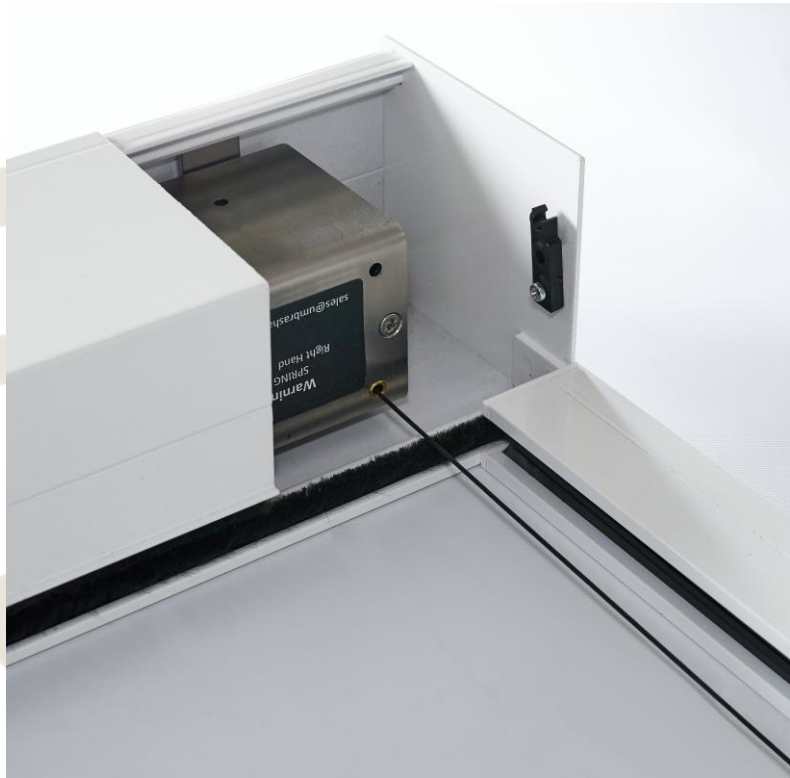


## KuroLok RL Characteristics

- Umbra always aims to supply the best possible fabric appearance. In most situations, the fabric will look better than the images in this document, but they can also appear worse if not installed correctly.
- An opaque fabric tends to look worse than a screen fabric due to light reflection instead of light penetration. This can also be the case with different colours of the same fabric.
- Fabrics with a zipped-edge will always show some waviness or wrinkles. A 100% flat fabric, especially on large systems, is not likely to be achieved.
- Horizontal systems can show sag in the fabric. The amount of sag seen will depend on the blind size, fabric type and weight etc.

This document has been designed to visually demonstrate some of the above points, and suggests some ways of reducing the risks of them appearing.

## CTS Units



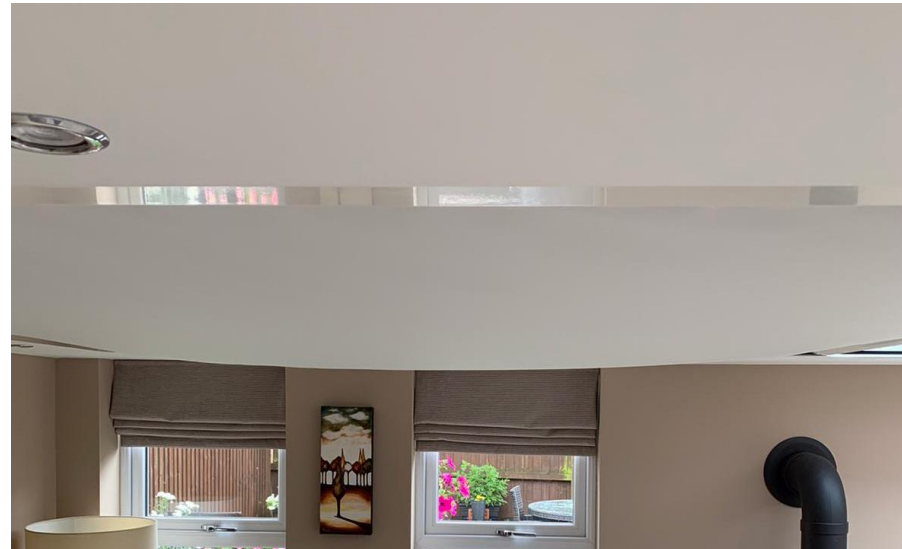
The Constant Tension Spring (CTS) units are used to keep the fabric taut. These springs do not operate silently, it is perfectly normal for the cords to make a clicking or pinging noise. They will also occasionally make a grinding noise whilst running normally.

## Fabric Appearance



The material used is a flexible fabric and will never be as flat as a sheet of glass. Some rippling and 'bellying' is to be expected.

For this reason we do not recommend installing your roof blind in a recess flush with the ceiling as this may look visually displeasing.



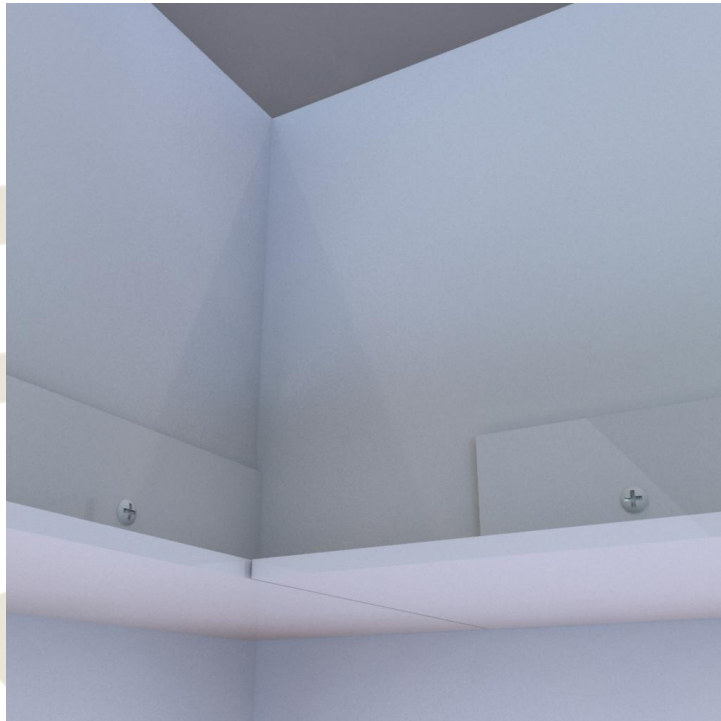
## Hembar



Due to the nature of the zip tensioning system, the bottom bar may not always be completely parallel to the headbox when fully retracted.

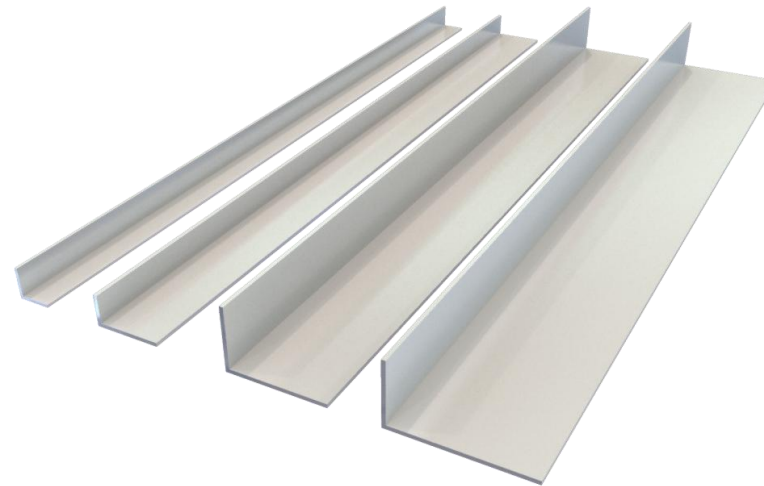
The use of L angle shelving profile will help to conceal this.

## L-angle shelving



The fixing angle (shelf profile) is aluminium and should be fitted tight to the wall of the recess. If the recess is not perfectly square you may find this shelf will not meet neatly at the corners.

The fitter will be responsible for keeping these gaps to a minimum and filling them with an appropriate filler.



## Zip weld



The edges of the fabric are held in the side channels by a zip. The zip is heat welded to the fabric for a strong bond, however when different materials are bonded together there is usually some visible rippling near the bond.

# Thermal Buildup

- If an RL blind is installed too close to the window, heat buildup can become a problem, causing damage to the blind or window.
- We recommend that systems installed should be at least 100mm away from the surface of the glazing.
- There is however no guarantee that an 100mm gap will eliminate all risk of thermal buildup and is only a recommendation. We recommend consulting a relevant professional for a thermal risk analysis for precise analysis.



## Further Information

For more tips on how to install your KuroLok RL system, visit our Troubleshooting Videos page:



Or get in touch:

[sales@umbrashading.co.uk](mailto:sales@umbrashading.co.uk)

01792 562 015

[www.umbrashading.co.uk](http://www.umbrashading.co.uk)