

Era Inn Edge^S AC BD

For indoor blinds, with built-in bidirectional radio receiver



Tubular motor with electronic limit switch, practical dry contact input and built-in bidirectional radio receiver.

S Size

Ø 35 mm

Smart

The Nice bidirectional radio protocol enables confirmation of correct reception of the command by the automation and the possibility of checking the position of the indoor blind.

As it also supports the Nice mesh network function, the motor can route the radio command, thus extending the radio range of the system.

Minimum vibrations and silent operation for maximum acoustic comfort. **Noise 35 dBA.**

Perfect alignment between the blinds, even with multiple installations: constant motor rotation speed in all load conditions and the possibility of setting the duration of up and down movements. Possibility of activating the **obstacle detection function** during both opening and closing.

Adjustable up and down speed.

Compatible with commercially available **dry contact systems.**

Simple installation

Each motor can be programmed individually, without needing to power off the other motors in the same system.

- **Via radio**, using Nice transmitters or the TTPRO BD palmtop programmer.
- **Via a wired connection**, using the TTPRO palmtop programmer.

Acoustic and visual comfort

Electronically controlled Soft Start and Soft Stop functions allow different acceleration and deceleration levels to be set in the sections near the limit switches.

Facilitated programming thanks to the two-colour diagnostic LED.

Energy saving

Low consumption both during motor operation and in standby (<0.5 W).

Extended operation without the risk of overheating.

Code	Description	Pcs./pack	Certificates
E EDGE SI 332 AC BD	Electronic limit switch, dry contact and built-in radio receiver. 100-240 VAC, 3 Nm, 32 rpm	1	CE cUL US LISTED
E EDGE SI 620 AC BD	Electronic limit switch, dry contact and built-in radio receiver. 100-240 VAC, 6 Nm, 20 rpm	1	CE cUL US LISTED
E EDGE SI 1012 AC BD	Electronic limit switch, dry contact and built-in radio receiver. 100-240 VAC, 10 Nm, 12 rpm	1	CE cUL US LISTED

NB: When ordering, please specify the certification required.

TECHNICAL SPECIFICATION

Code	E EDGE SI 332 AC BD	E EDGE SI 620 AC BD	E EDGE SI 1012 AC BD
ELECTRICAL SPECIFICATIONS			
Power supply (VAC/Hz)	100-240 / 50-60		
Absorption (A)	0,6	0,8	
Power (W)	40	50	40
Power consumption in standby (W)	<0,5		
PERFORMANCE			
Torque (Nm)	3	6	10
Rated speed (rpm)	32	20	12
Maximum speed (rpm)*	48	32	20
Minimum speed (rpm)	16	10	5
Noise (dBA)**	35		
Number of turns before the stop	<150		
Continuous operating time (min)	10	6	
Lifted weight (kg)***	12	22	34
DIMENSIONAL DATA			
Length (L) (mm)	744		
Cable length (m)	1,5		
Weight of motor (kg)	1,5		
Operating temperature (°C Min/Max)	0 ÷ 60		
Pack dimensions (mm)	795x100x100		

Protection class IP30.

*If the set speed is higher than the rated speed, motor torque is automatically reduced by 50%.

**Noise levels have been measured in accordance with EN ISO 3745, EN ISO 3746 and EN 60704-1, expressing the sound power emitted by the source in dBA.

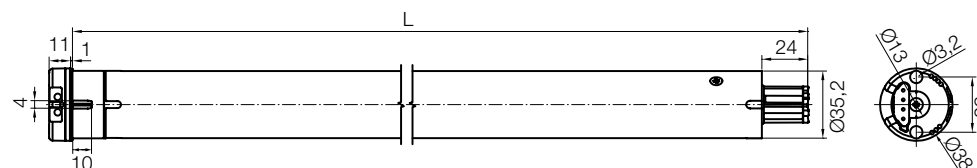
***Indicative value calculated with a 40 mm diameter roller. The actual value may vary depending on the specific installation.

PULL-OUT POWER CABLE

Length 1.5 m, 3 wires in cable



DIMENSIONS



Era Inn Edge^S DC BD



Tubular motor with electronic limit switch, practical dry contact input and built-in bidirectional radio receiver.

S Size
Ø 35 mm

Smart

The Nice bidirectional radio protocol enables confirmation of correct reception of the command by the automation and the possibility of checking the position of the indoor blind.

As it also supports the Nice mesh network function, the motor can route the radio command, thus extending the radio range of the system.

Minimum vibrations and silent operation for maximum acoustic comfort. **Noise 35 dBA.**

Perfect alignment between the blinds, even with multiple installations: constant motor rotation speed in all load conditions and the possibility of setting the duration of up and down movements.

Possibility of activating the **obstacle detection function** during both opening and closing.

Thanks to its compact dimensions, the motor can be installed in even the smallest of spaces.

Adjustable up and down speed.

Compatible with commercially available **dry contact systems.**

Simple installation

Each motor can be programmed individually, without needing to power off the other motors in the same system.

- **Via radio**, using Nice transmitters or the TTPRO BD palmtop programmer.
- **Via a wired connection**, using the TTPRO palmtop programmer.

Acoustic and visual comfort

Electronically controlled Soft Start and Soft Stop functions allow different acceleration and deceleration levels to be set in the sections near the limit switches.

Facilitated programming thanks to the two-colour diagnostic LED.

Energy saving

Low consumption both during motor operation and in standby (<0.5 W).

Extended operation without the risk of overheating.

Code	Description	Pcs./pack	Certificates
E EDGE SI 332 DC BD	Electronic limit switch, dry contact and built-in radio receiver. 24 VDC, 3 Nm, 32 rpm	1	CE cUL US LISTED
E EDGE SI 620 DC BD	Electronic limit switch, dry contact and built-in radio receiver. 24 VDC, 6 Nm, 20 rpm	1	CE cUL US LISTED
E EDGE SI 1012 DC BD	Electronic limit switch, dry contact and built-in radio receiver. 24 VDC, 10 Nm, 12 rpm	1	CE cUL US LISTED

NB: When ordering, please specify the certification required.

TECHNICAL SPECIFICATION

Code	E EDGE SI 332 DC BD	E EDGE SI 620 DC BD	E EDGE SI 1012 DC BD
ELECTRICAL SPECIFICATIONS			
Power supply (VDC)	24		
Absorption (A)	1,5	2	1,6
Power (W)	36	50	40
Power consumption in standby (W)	<0,5		
PERFORMANCE			
Torque (Nm)	3	6	10
Rated speed (rpm)	32	20	12
Maximum speed (rpm)*	48	32	20
Minimum speed (rpm)	16	10	5
Noise (dBA)**	35		
Number of turns before the stop	<150		
Continuous operating time (min)	6		
Lifted weight (kg)***	12	22	34
DIMENSIONAL DATA			
Length (L) (mm)	472		
Cable length (m)	1,5		
Weight of motor (kg)	1,1		
Operating temperature (°C Min/Max)	0 ÷ 60		
Pack dimensions (mm)	595x100x100		

Protection class IP30.

*If the set speed is higher than the rated speed, motor torque is automatically reduced by 50%.

**Noise levels have been measured in accordance with EN ISO 3745, EN ISO 3746 and EN 60704-1, expressing the sound power emitted by the source in dBA.

***Indicative value calculated with a 40 mm diameter roller. The actual value may vary depending on the specific installation.

PULL-OUT POWER CABLE

Length 1.5 m, 2 wires in cable



DIMENSIONS

