

**Workroom App Enabling:**

- Enable Barcode Platform Access.
- Enable Product for Production App
- Add Process, Station, and Update Time.
- Setup Product Workflow.
- Allocate Users to Processes.

**Job Creation and Management:**

- Create and Change Job Status to "Order."

**Fabric Cut Optimization:**

- Set up the BOM.
- Handle and Update Fabric Details.
- Apply Optimization and Export Cutting Files.

**Tube Cut Optimization:**

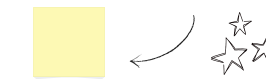
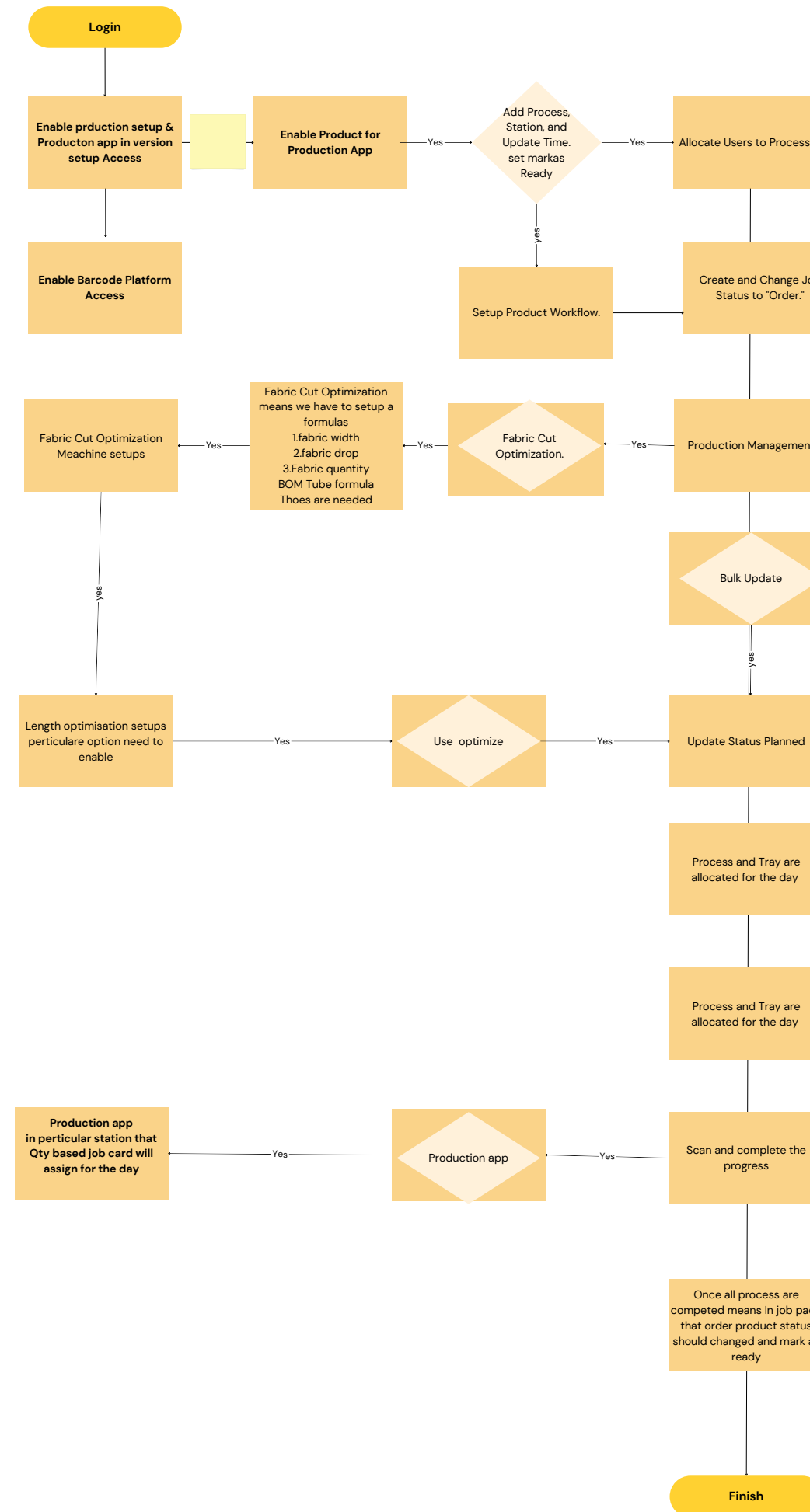
- Set up BOM and Tube Specifications.
- Apply Optimization and Export Cutting Files.

**Final Processes:**

- Assembly, Quality Control, and Dispatch.

# Workflow Diagram

With fabric optimize and Tube optimize



Checklist	
With fabric optimize & Tube optimize	Without optimize
1.Enable Stock fabric and tube in form setup page	1.Add process and stations
2.setup the formulas and add stock values	2.Create Workfolw in perticular product
3.Setup settings in Optimisation setup page	3.use bulk update change to plaed status