

PROJECT REF & ADDRESS:

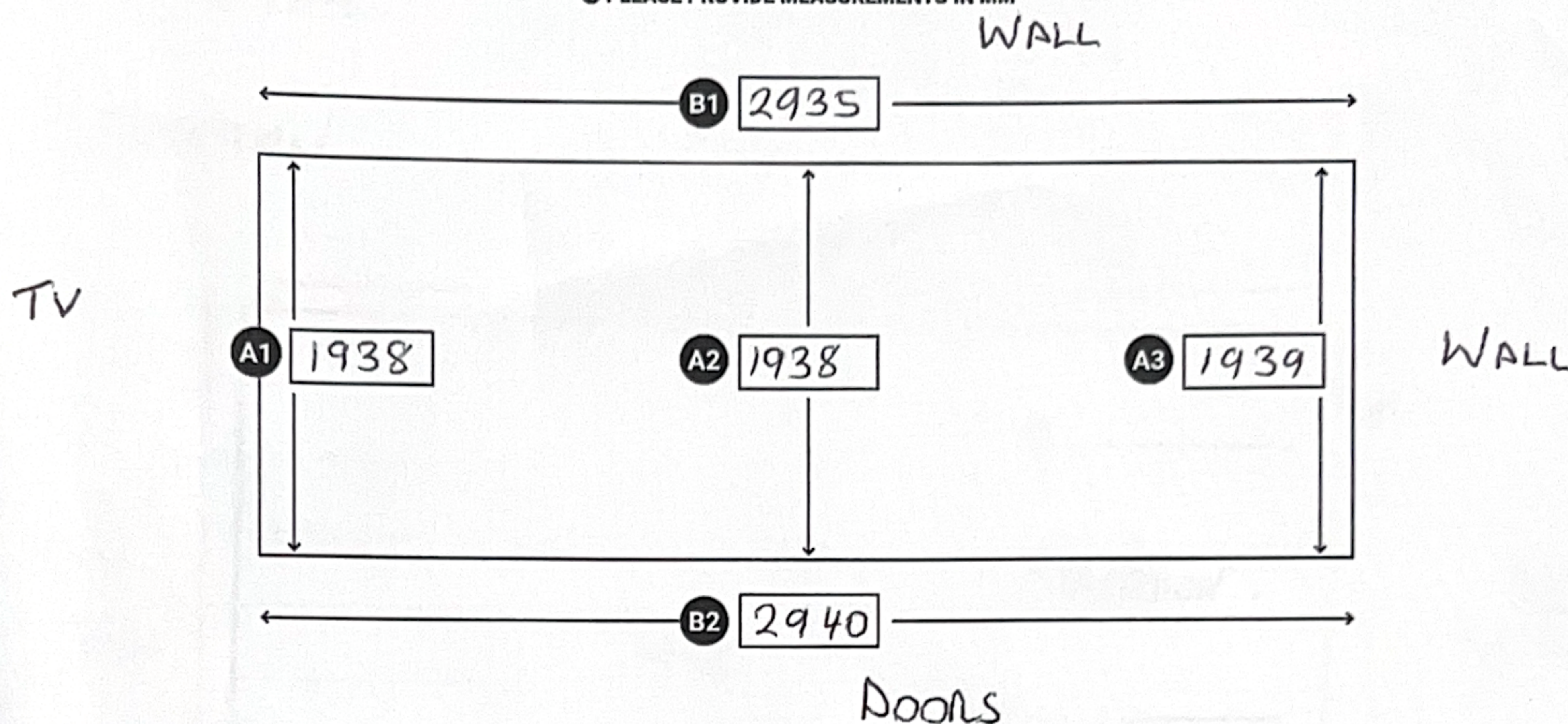
HUMPHRIES

ROOM REF:

LOUNGE

NOTES:

PLEASE PROVIDE MEASUREMENTS IN MM



1. MOTOR PLACEMENT

This is the side where the blind will retract to

- A1
- A3
- B1
- B2

2. SIZE TYPE PROVIDED

- Blind Size
- Recess Size*

* If Recess Sizes are provided we will deduct 10mm from the sizes given

3. BLIND ORIENTATION

- Horizontal
- Sloped

4. FRAME OPTION

- L-Profile Side Channels (4 Pieces)*

* Please select Recess Size if L-Profile is required

5. HARDWARE COLOUR

- White
- Black
- Anthracite Grey
- Bespoke RAL

6. FABRIC OPTIONS

FABRIC RANGE

- SONA
- Other:

FABRIC TYPE

- Blackout
- Dimout

FABRIC COLOUR

LEXINGTON CREAM.

FIRE RETARDANT FABRIC

- Yes*

* Please note, extra charges will apply

7. REMOTE TYPE

- Situo 1 (1 Channel Handset)
- Situo 5 (5 Channel Handset)
- Telis 16 (16 Channel Handset)
- Smoove Origin (1 Channel Wall Switch)
- Smoove Origin 4 (4 Channel Wall Switch)

CHANNEL NO:

8. POWER SUPPLY

WIRE-FREE

- Battery (Li-on)*
- Solar Pack (Panel & Li-on Battery)

*Battery Charger Required

MAINS

- 12v Plug-in Adapter (Powers > 1 Blind)
- SNA-45-12 Transformer (Powers > 1 Blind)
- SNA-75-12 Transformer (Powers > 3 Blinds)
- SNA-100-12 Transformer (Powers > 4 Blinds)
- SNA12150 Transformer (Powers > 6 Blinds)

9. ACCESSORIES

- TaHoma Switch (Smart-Hub)
- Mains Adapter Extension Cable (240cm)
- Battery Extension Cable (240cm)
- Battery Charger (Li-ion)