

MFO 28912

WINDOW SCHEDULE

pf woods

Ref. No.	Room	Structural Opening (1)		Emergency egress (2)	Glazing Type (3)	Security (4)	Background ventilation (mm ²)	Notes
		Width	Height					
W1	Living Room	675	1350	No	Standard	Part Q	4000	
W2	Living Room	2577.5	1350	No	Standard	Part Q		
W3	Living Room	675	1350	No	Standard	Part Q	4000	
W4	Utility	685	1125	Yes	Standard	Part Q	4000	
W5	WC	685	1125	Yes	Obscure	Part Q	4000	
W6	Bedroom 1	1247.5	1125	Yes	Standard		4000	
W7	Bedroom 1	1247.5	1125	Yes	Standard		4000	
W8	Bedroom 3	1810	1125	Yes	Standard		4000	
W9	Bedroom 2	1247.5	1125	Yes	Standard	Part Q	4000	
W10	Bathroom	685	1050	No	Obscure	Part Q		Standard sill
W11	Bedroom 4	1247.5	1125	Yes	Standard	Part Q	4000	Standard sill

EXTERNAL DOOR SCHEDULE

Ref. No.	Room	Structural Opening (1)		Glazing Type (2)	Security (4)	Threshold (5)	Min. clear opening (1)	Notes
		Width	Height					
ED1	Hall	1022.5	2100	Obscure	Part Q	Level	850	
ED2	Kitchen	2935	2100	Safety	Part Q	Level	850 - to leading door	
ED3	Garage	2304	2121	N/A	Part Q	Level	2304	Make framework fixed to the back of the opening. Changed door size: 2256x2125mm. This allows for door to protrude 15mm from the garage sill.

INTERNAL DOOR SCHEDULE

Ref. No.	Room	Door leaf		Structural Opening		Notes
		Width	Height	Width	Height	
D1	Living Room	838	1981	904	2033	Based on pre assembled door kit
D2	Store	838	TBC	904	TBC	Based on pre assembled door kit - Cut door / or reduced height door below stair - TBC
D3	Kitchen	838	1981	904	2033	Based on pre assembled door kit
D4	Store	610 x 2	1981	1289	2033	Based on pre assembled door kit
D5	Store	610 x 2	1981	1289	2033	Based on pre assembled door kit
D6	Utility	838	1981	904	2033	Based on pre assembled door kit
D7	WC	838	1981	904	2033	Based on pre assembled door kit
D8	Bedroom 3	838	1981	904	2033	Based on pre assembled door kit
D9	Bedroom 4	838	1981	904	2033	Based on pre assembled door kit
D10	Bathroom	838	1981	904	2033	Based on pre assembled door kit
D11	Bedroom 2	838	1981	904	2033	Based on pre assembled door kit

using
external
term
technical

door



2

W10	Bathroom	685	1050	No	Obscure	Part Q		Standard sill
W11	Bedroom 4	1247.5	1125	Yes	Standard	Part Q	4000	Standard sill

EXTERNAL DOOR SCHEDULE

Ref. No.	Room	Structural Opening (1)		Glazing Type (2)	Security (4) Notes	Threshold (6)	Min. clear opening (7)	Notes
		Width	Height					
ED1	Hall	1022.5	2100	Obscure	Part Q	Level	850	
ED2	Kitchen	2935	2100	Safety	Part Q	Level	850 - to leading door	
ED3	Garage	2304	2121	N/A	Part Q	Level	2304	Min. frame is fitted to the back of the opening. Garage door size: 2284x2136mm. The above is for door to provide 15mm lower than garage sill.

INTERNAL DOOR SCHEDULE

Ref. No.	Room	Door leaf		Structural Opening		Notes
		Width	Height	Width	Height	
D1	Living Room	838	1981	904	2033	Based on pre assembled door kit
D2	Store	838	TBC	904	TBC	Based on pre assembled door kit - Cut door / or reduced height door below stair - TBC
D3	Kitchen	838	1981	904	2033	Based on pre assembled door kit
D4	Store	610 x 2	1981	1289	2033	Based on pre assembled door kit
D5	Store	610 x 2	1981	1289	2033	Based on pre assembled door kit
D6	Utility	838	1981	904	2033	Based on pre assembled door kit
D7	WC	838	1981	904	2033	Based on pre assembled door kit
D8	Bedroom 3	838	1981	904	2033	Based on pre assembled door kit
D9	Bedroom 4	838	1981	904	2033	Based on pre assembled door kit
D10	Bathroom	838	1981	904	2033	Based on pre assembled door kit
D11	Bedroom 2	838	1981	904	2033	Based on pre assembled door kit
D12	Store	762	1981	831	2033	Based on pre assembled door kit
D13	Bedroom 1	838	1981	904	2033	Based on pre assembled door kit
D14	Bedroom 1 Built In Wardrobe	610 x 2	1981	1289	2033	Based on pre assembled door kit
D15	En Suite	838	1981	904	2033	Based on pre assembled door kit

Refer to specification document for Ironmongery requirements

Notes:

- 1.) Brickwork opening size to be checked on site.
- 2.) Windows indicated as fire escape to have an opening casement min. 450mm wide and 450mm high and a min. 0.33m sq. total clear opening area.
- 3.) Windows indicated to have safety glass to be toughened or laminated in accordance with BS6206. All glazing clear unless noted as obscure.
- 4.) All windows and door indicated as Part Q must be manufactured to a design that has been shown by tests to meet security standards of PAS 24 : 2012 and installed in accordance with the manufacturer's instructions. Main entrance door to be fitted with a door viewer, door chain and a letter plate that meets the Door & Hardware Federation's technical specification TS008 : 2012.
- 5.) Background ventilation to be provided with trickle vents to windows based on continuous mechanical extract ventilation.
- 6.) Door thresholds noted as level to be fitted with accessible threshold to meet AD M.
- 7.) Where minimum clear opening stated doorset to achieve dimension when measured from inside.

WINDC The ha finished other w with a r

WINDO All sills a Front ele Rear ele

ALL WIN ORDER I

Windo 0.33m

FIRE I

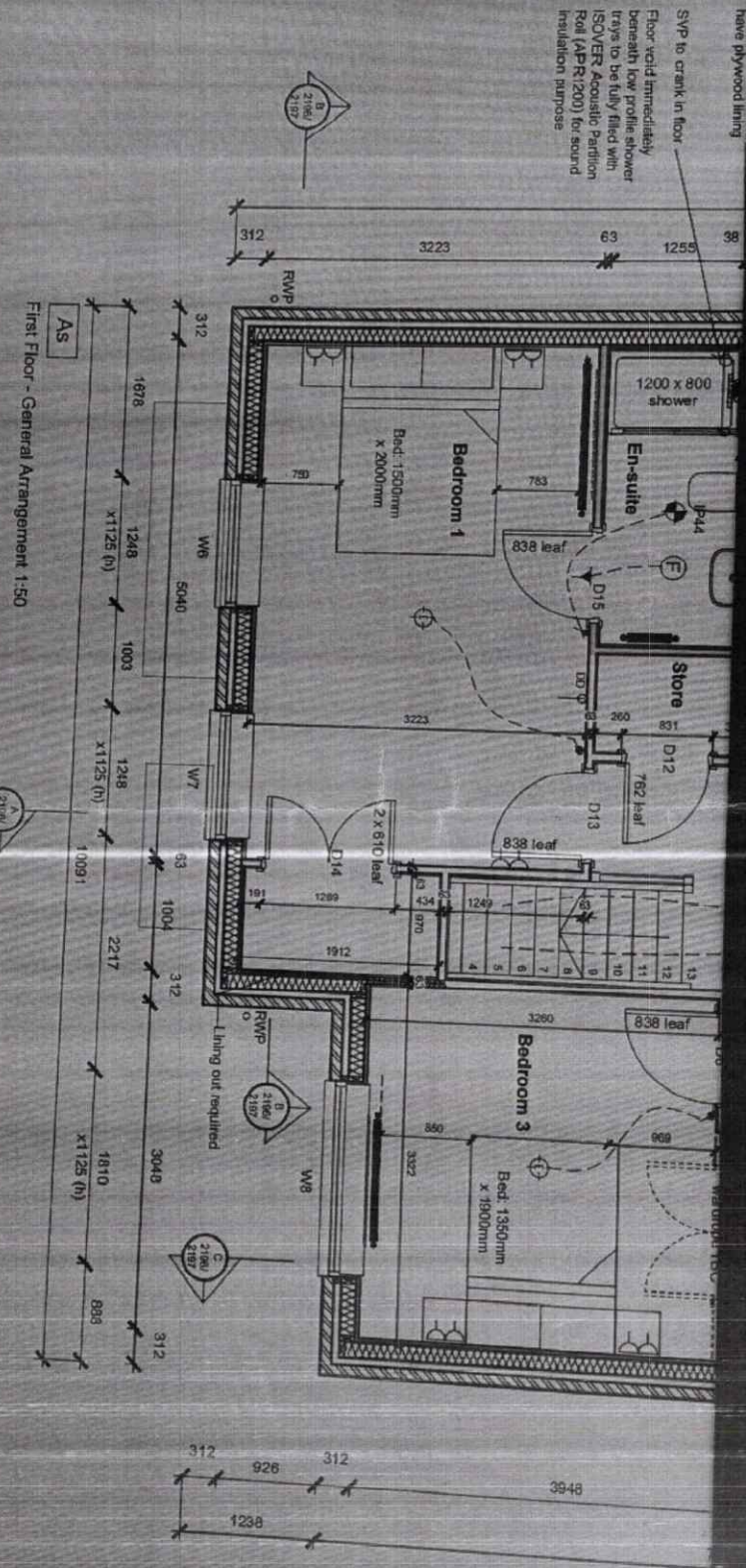
All gl be for C of B

GLAZ

Data

AI 2280 - HON - GAS

WINDOW SCHEDULE



First Floor - General Arrangement 1:50

A SUITABLE NUMBER OF SELF-CONTAINED ALARMS SHOULD BE INSTALLED IN ACCORDANCE WITH THE FIRE ALARMS ACT 1992 AND THE FIRE ALARMS (REGULATIONS) ACT 1992.

PROPOSALS TO

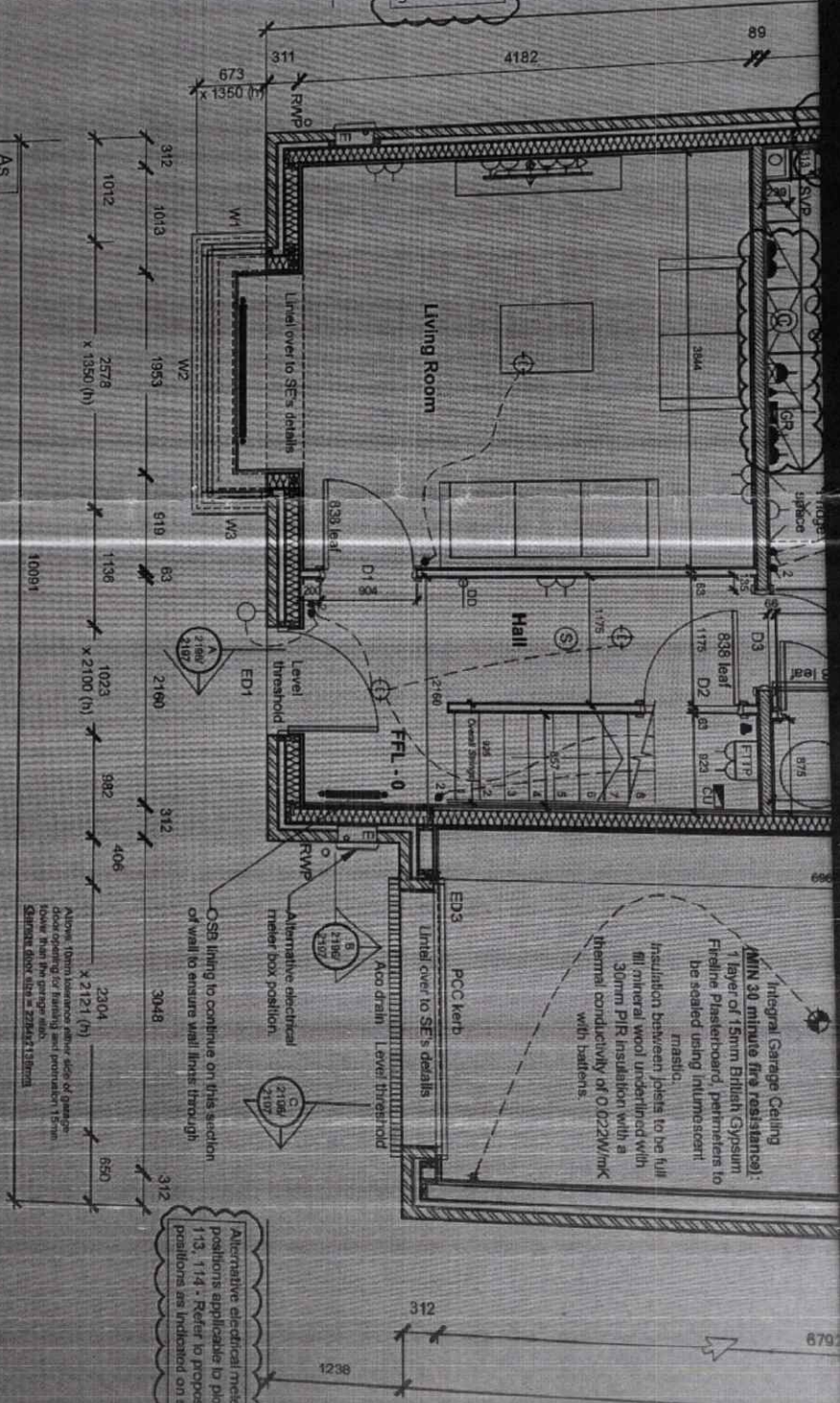
NO	DESCRIPTION	QTY	UNIT	PRICE	TOTAL
01
02
03
04
05
06
07
08
09
10

DELL

A1 2280 - HON - GAS

Electrical meter box positions applicable to plots: 56, 58, 85, 116, 118, 134, 135, 140, 150, 167, 169, 170, 185, 186, 188, 189. Refer to proposed meter positions as indicated on site plan.

Ground Floor - General Arrangement 1:50
 Wall Type Legend:



Alternative electrical meter box & BT positions applicable to plots: 54, 57, 113, 114. Refer to proposed meter positions as indicated on site plan.

DELL

WINDOW SCH

7