

Measuring Sheet

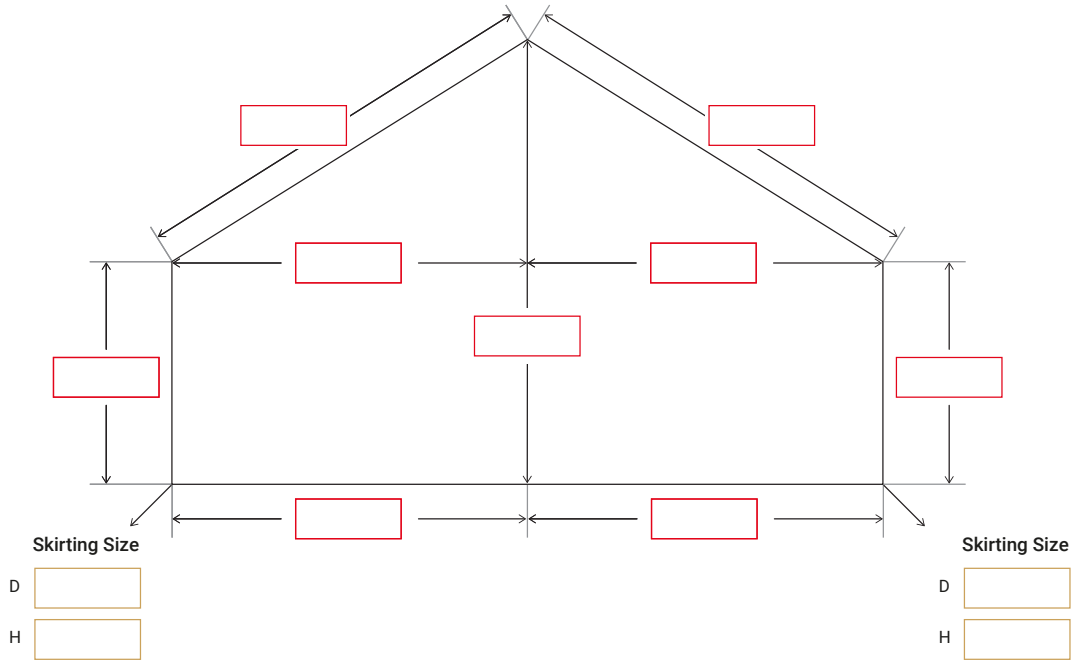
SonaApex S1 - Motorised Shaped Blind



Project Ref:

Room Ref:

Notes:



* PLEASE PROVIDE MEASUREMENTS IN MM

Please provide a clear image of the window

We are able to check your measurement whilst you are on site using our bespoke software. This may save you a re-visit. Please contact the office on 01772 288 200

1. SIZE TYPE PROVIDED

Blind Size
Recess Size*

* If Recess Sizes are provided we will deduct 10mm from the shortest widths given.

2. FRAME OPTION

Perfect Fit International*

* Standard finish is in White

3. HARDWARE COLOUR

White
Anthracite Grey
Black
Bespoke RAL *

*Please note, extra charges will apply.

4. BRACKETS

Top
Face
Perfect Fit International

5. FABRIC OPTIONS

FABRIC RANGE

SONA
Other

FABRIC TYPE & COLOUR

Blackout
Dimout

Colour:

FIRE RETARDANT FABRIC

Yes*

* Please note, extra charges will apply.

6. REMOTE TYPE QTY

Situo 1
(1 Channel Handset)

Situo 5
(5 Channel Handset)

Telis 16
(16 Channel Handset)

Smooove Origin
(1 Channel Wall Switch)

Smooove Origin 4
(4 Channel Wall Switch)

CHANNEL NUMBER NO.

Channel No:

7. POWER SUPPLY QTY

WIRE-FREE

Battery (Li-on)*
Solar Pack (Panel & Li-on Battery)

*Battery Charger Required.

MAINS PLUG-IN

12v Plug-in Adapter
(Powers > 1 Blind)

MAINS HARDWIRED TRANSFORMER

SNA-45-12
(Powers > 1 Blind)

SNA-75-12
(Powers > 3 Blinds)

SNA-100-12
(Powers > 4 Blinds)

SNA12150
(Powers > 6 Blinds)

8. ACCESSORIES QTY

Tahoma Switch
(Smart-Hub)

Motor Extension Cable
(240cm)

Solar Panel
Extension Cable (240cm)

Battery Charger
Extension Cable (240cm)

Battery Charger
(Li-on)