

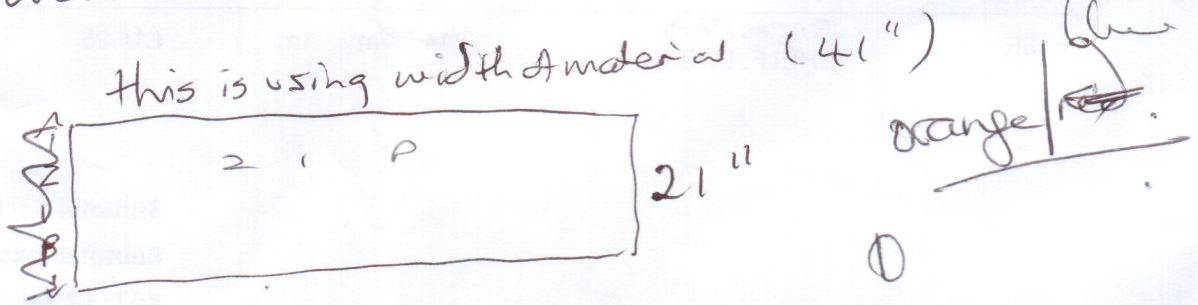
①

No Red
orange/
Blue.

Please make a cover for a long bench cushion. Cushion is 1 inch in depth - so have measured cushion + added one inch in allow for thickness +

∴ cushion cover should measure

for this flat cushion.

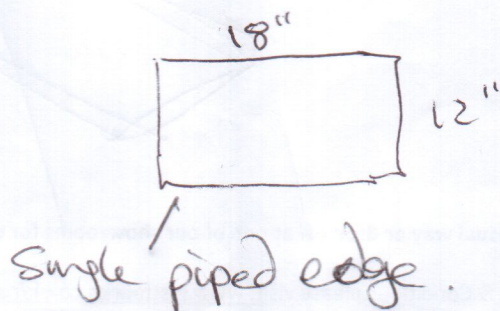


Use ~~as~~ backing material for the reverse. + pipe* around the edges. (please return to me rest of fabric with the fringed edge)

② Make cushion with smaller piece of fabric - using all fabric (1" both sides) + pipe around the edges - + zip.

- to fit standard oblong cushion.

approx?



poly Cushion
* contrasting piping.