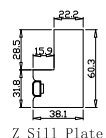


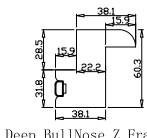
NOTES:

- Shutter Color: Mist Grey(覆盖色)
- Hinges Color: Nickel(镀镍合页)
- Qty(数量): 1
- Material(材质): Paulownia(桐木)
- Configuration(窗扇结构): LDL-DRDR, IN, 4SP, 41.3mm Astrigal, Deep BullNose Z Frame 38mm
- Tilt rod type(拉杆类型): Center tilt rod(中拉杆)
- Louvre Quantity(叶片数量): 136
- Louvre Size(叶片尺寸): 366.05mm
- Rail Size(上下板尺寸): 418.05mm

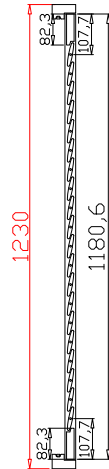
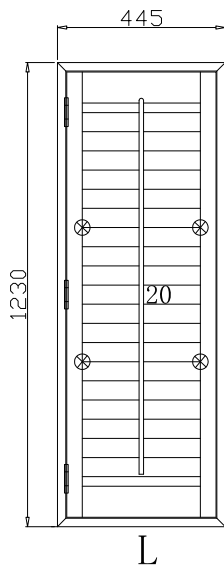
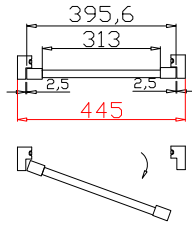
- Order No(订单号): SCO SB 7850 RUDDER
- Item(序号): 1
- Room(房间号): DINNING
- Louvre Size(叶片类型): 64mm



Z Sill Plate



Deep BullNose Z Frame 38mm



NOTES:

Shutter Color: Mist Grey (覆盖色)

Hinges Color: Nickel (镀镍合页)

Qty (数量): 1

Material (材质): Palowania (桐木)

Configuration (窗扇结构): L, IN, 4Side, 41.3mm Butt, Deep Plain L Frame 60mm

Tilt rod type (拉杆类型): Center tilt rod (中拉杆)

Louvre Quantity (叶片数量): 20

Louvre Size (叶片尺寸): 311mm

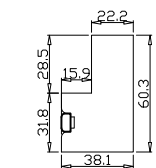
Rail Size (上下板尺寸): 363mm

Order No (订单号): SCO SB 7850 RUDDER

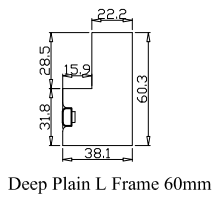
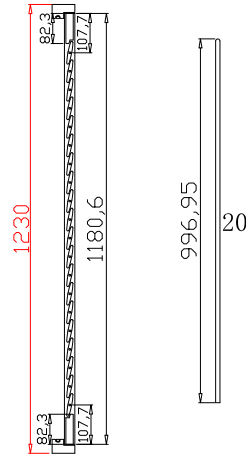
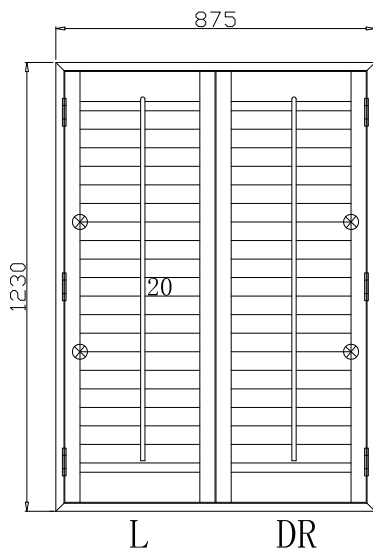
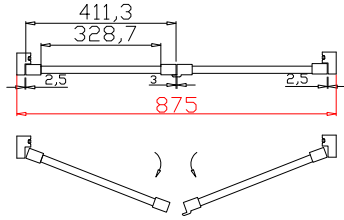
Item (序号): 2

Room (房间号): BAY L

Louvre Size (叶片类型): 64mm



Deep Plain L Frame 60mm



Deep Plain L Frame 60mm

NOTES:

Shutter Color:Mist Grey(覆盖色)

Hinges Color:Nickel(镀镍合页)

Qty(数量): 1

Material(材质): Palowania(桐木)

Configuration(窗扇结构): L-DR,IN, 4Side, 41.3mm Astrigal, Deep Plain L Frame 60mm

Tilt rod type(拉杆类型): Center tilt rod(中拉杆)

Louvre Quantity(叶片数量): 40

Louvre Size(叶片尺寸): 326.7mm

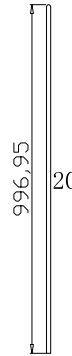
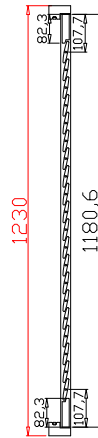
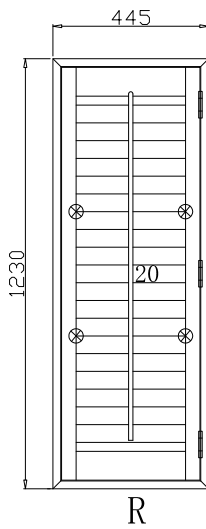
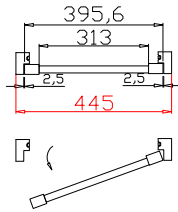
Rail Size(上下板尺寸): 378.7mm

Order No(订单号):SCO SB 7850 RUDDER

Item(序号): 3

Room(房间号):BAY M

Louvre Size(叶片类型): 64mm



NOTES:

Shutter Color: Mist Grey(覆盖色)

Hinges Color: Nickel(镀镍合页)

Qty(数量): 1

Material(材质): Palowania(桐木)

Configuration(窗扇结构): R, IN, 4Side, 41.3mm Butt, Deep Plain L Frame 60mm

Tilt rod type(拉杆类型): Center tilt rod(中拉杆)

Louvre Quantity(叶片数量): 20

Louvre Size(叶片尺寸): 311mm

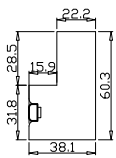
Rail Size(上下板尺寸): 363mm

Order No(订单号): SCO SB 7850 RUDDER

Item(序号): 4

Room(房间号): BAY L

Louvre Size(叶片类型): 64mm



Deep Plain L Frame 60mm