

8

8

NOTES:

Shutter Color: Timeless White(覆盖色)

Hinges Color: White(白色)

Qty(数量): 1

Material(材质): Balmoral Pine Wood(松木)

Configuration(窗扇结构): L, IN, 4Side, 41.3mm Butt, Double Insert F Frame 85mm with type 1 blind system

Tilt rod type(拉杆类型): Easy tilt rod(齿条拉杆)

Louvre Quantity(叶片数量): 16

Louvre Size(叶片尺寸): 357.3mm

Rail Size(上下板尺寸): 409mm

With white b/o blind

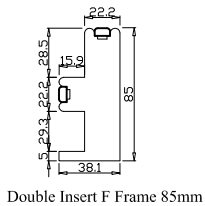
配置白色无拉绳窗帘, 窗帘背面带银箔的材料

Order No(订单号): JPK Collinson

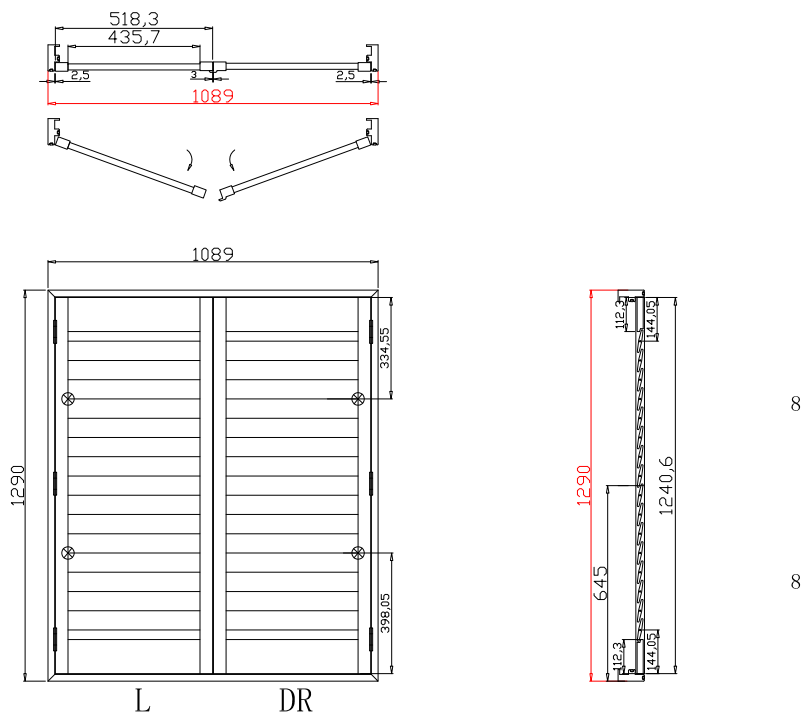
Item(序号): 1

Room(房间号): Bed Bay Left

Louvre Size(叶片类型): 76mm



Double Insert F Frame 85mm



NOTES:

Shutter Color:Timeless White(覆盖色)

Hinges Color:White(白色)

Qty(数量): 1

Material(材质): Balmoral Pine Wood(松木)

Configuration(窗扇结构): L-DR,IN, 4Side, 41.3mm Astrigal, Double Insert F Frame 85mm with type 1 blind system

Tilt rod type(拉杆类型): Easy tilt rod(齿条拉杆)

Louvre Quantity(叶片数量): 32

Louvre Size(叶片尺寸): 434mm

Rail Size(上下板尺寸): 485.7mm

With white b/o blind

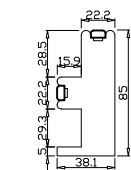
配置白色无拉绳窗帘, 窗帘背面带银箔的材料

Order No(订单号):JPK Collinson

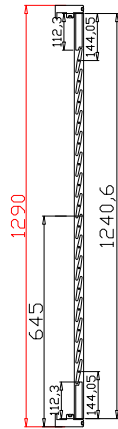
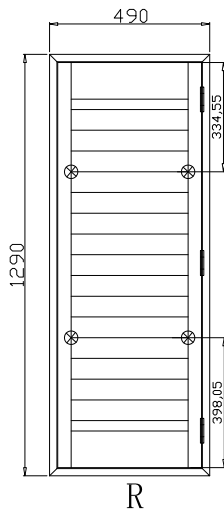
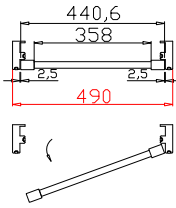
Item(序号): 2

Room(房间号):Bed Bay Middle

Louvre Size(叶片类型): 76mm

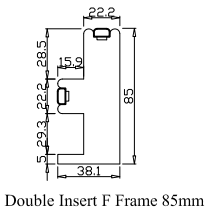


Double Insert F Frame 85mm



8

8



Double Insert F Frame 85mm

NOTES:

Shutter Color: Timeless White(覆盖色)

Hinges Color: White(白色)

Qty(数量): 1

Material(材质): Balmoral Pine Wood(松木)

Configuration(窗扇结构): R, IN, 4Side, 41.3mm Butt, Double Insert F Frame 85mm with type 1 blind system

Tilt rod type(拉杆类型): Easy tilt rod(齿条拉杆)

Louvre Quantity(叶片数量): 16

Louvre Size(叶片尺寸): 356.3mm

Rail Size(上下板尺寸): 408mm

With white b/o blind

配置白色无拉绳窗帘, 窗帘背面带银箔的材料

Order No(订单号): JPK Collinson

Item(序号): 3

Room(房间号): Bed Bay Rightt

Louvre Size(叶片类型): 76mm