

8

23

NOTES:

Shutter Color: Timeless White(覆盖色)

Hinges Color: White(白色)

Qty(数量): 1

Material(材质): Paulownia(桐木)

Configuration(窗扇结构): R, IN, 4Side, 41.3mm Butt, Deep Plain L Frame 60mm

Tilt rod type(拉杆类型): Easy tilt rod(齿条拉杆)

Louvre Quantity(叶片数量): 31

Louvre Size(叶片尺寸): 460.6mm

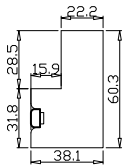
Rail Size(上下板尺寸): 512.6mm

Order No(订单号): SCO SB 8150 KIRKBRIDE

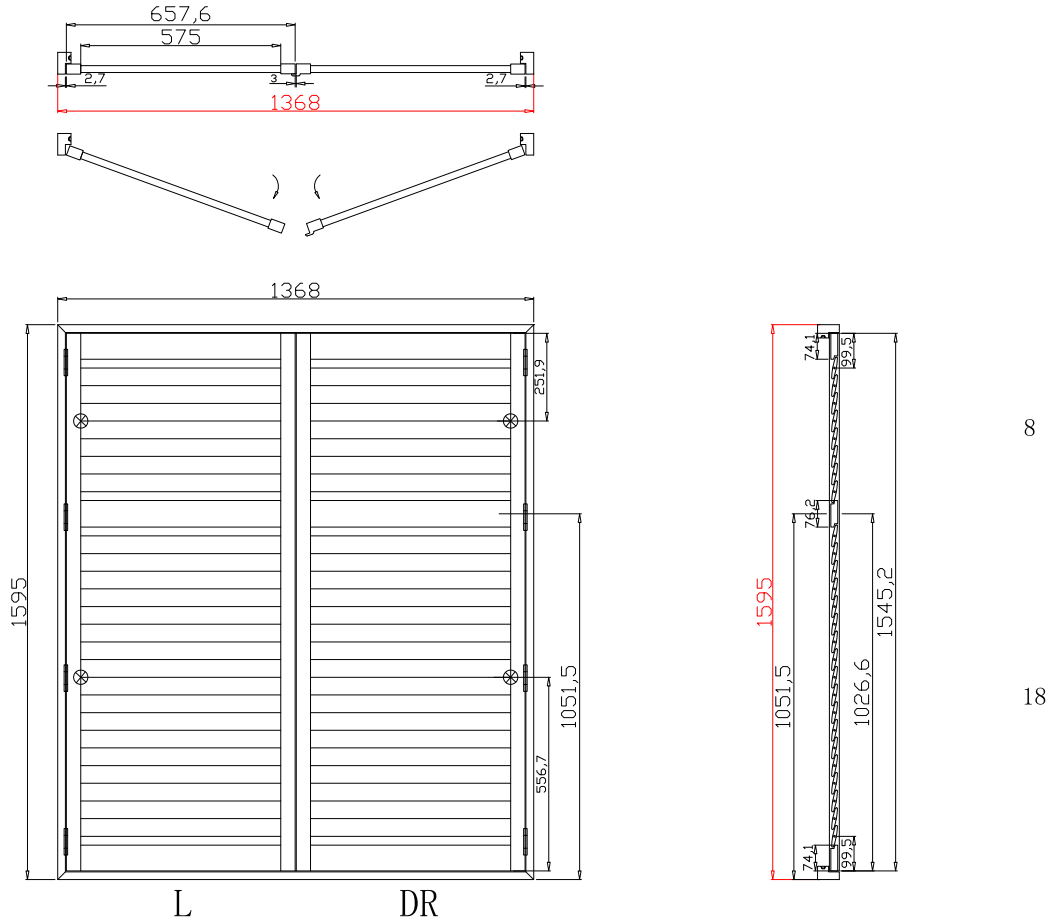
Item(序号): 1

Room(房间号): LIV R

Louvre Size(叶片类型): 64mm



Deep Plain L Frame 60mm



NOTES:

Shutter Color: Timeless White(覆盖色)

Hinges Color: White(白色)

Qty(数量): 1

Material(材质): Paulownia(桐木)

Configuration(窗扇结构): L-DR, IN, 4Side, 41.3mm Astrigal, Deep Plain L Frame 60mm

Tilt rod type(拉杆类型): Easy tilt rod(齿条拉杆)

Louvre Quantity(叶片数量): 52

Louvre Size(叶片尺寸): 573mm

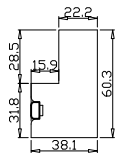
Rail Size(上下板尺寸): 625mm

Order No(订单号): SCO SB 8150 KIRKBRIDE

Item(序号): 2

Room(房间号): F BED

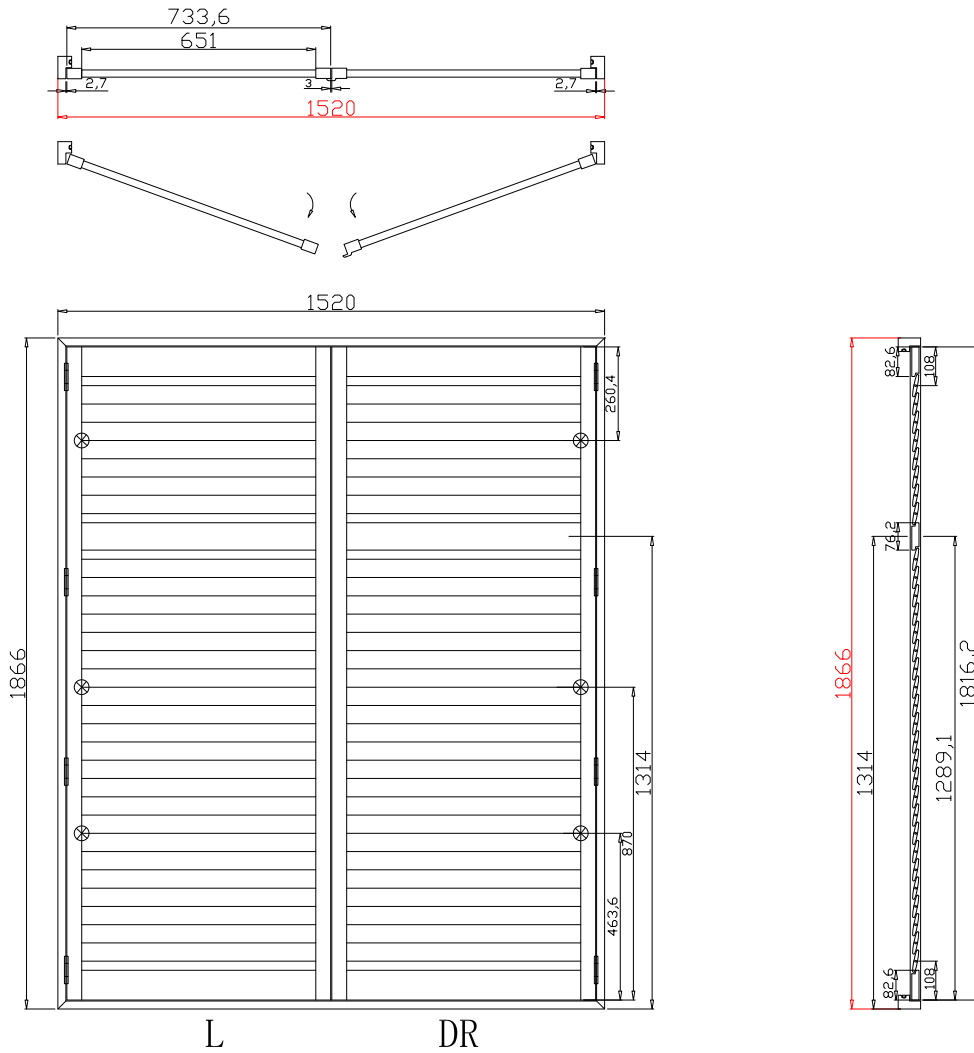
Louvre Size(叶片类型): 64mm



Deep Plain L Frame 60mm

8

18



8

23

NOTES:

Shutter Color: Timeless White(覆盖色)

Hinges Color: White(白色)

Qty(数量): 1

Material(材质): Paulownia(桐木)

Configuration(窗扇结构): L-DR, IN, 4Side, 41.3mm Astrigal, Deep Plain L Frame 60mm

Tilt rod type(拉杆类型): Easy tilt rod(齿条拉杆)

Louvre Quantity(叶片数量): 62

Louvre Size(叶片尺寸): 649mm

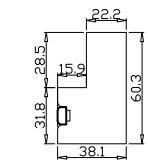
Rail Size(上下板尺寸): 701mm

Order No(订单号): SCO SB 8150 KIRKBRIDE

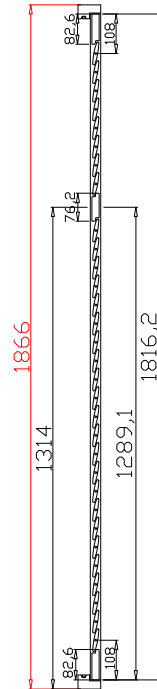
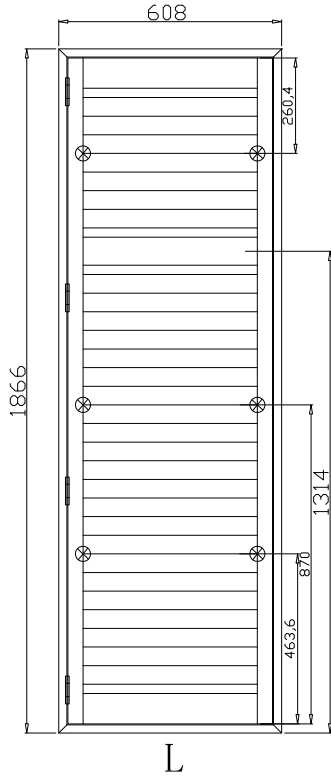
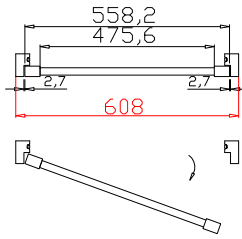
Item(序号): 3

Room(房间号): LIV MID

Louvre Size(叶片类型): 64mm



Deep Plain L Frame 60mm



8

23

NOTES:

Shutter Color: Timeless White(覆盖色)

Hinges Color: White(白色)

Qty(数量): 1

Material(材质): Paulownia(桐木)

Configuration(窗扇结构): L, IN, 4Side, 41.3mm Butt, Deep Plain L Frame 60mm

Tilt rod type(拉杆类型): Easy tilt rod(齿条拉杆)

Louvre Quantity(叶片数量): 31

Louvre Size(叶片尺寸): 473.6mm

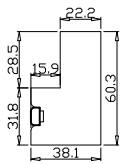
Rail Size(上下板尺寸): 525.6mm

Order No(订单号): SCO SB 8150 KIRKBRIDE

Item(序号): 4

Room(房间号): LIV L

Louvre Size(叶片类型): 64mm



Deep Plain L Frame 60mm