

4

16

NOTES:

Shutter Color:Timeless White(覆盖色)

Hinges Color:White(白色)

Qty(数量): 1

Material(材质): Paulownia(桐木)

Configuration(窗扇结构): L-DR,IN, 4Side, 41.3mm Astrigal, Deep Plain L Frame 60mm

Tilt rod type(拉杆类型): Easy tilt rod(齿条拉杆)

Louvre Quantity(叶片数量): 40

Louvre Size(叶片尺寸): 369.2mm

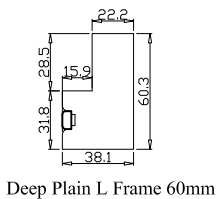
Rail Size(上下板尺寸): 421.2mm

Order No(订单号):SCO SB 7887 PEAT

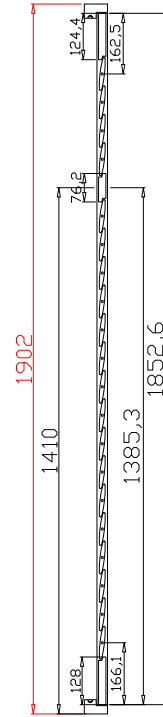
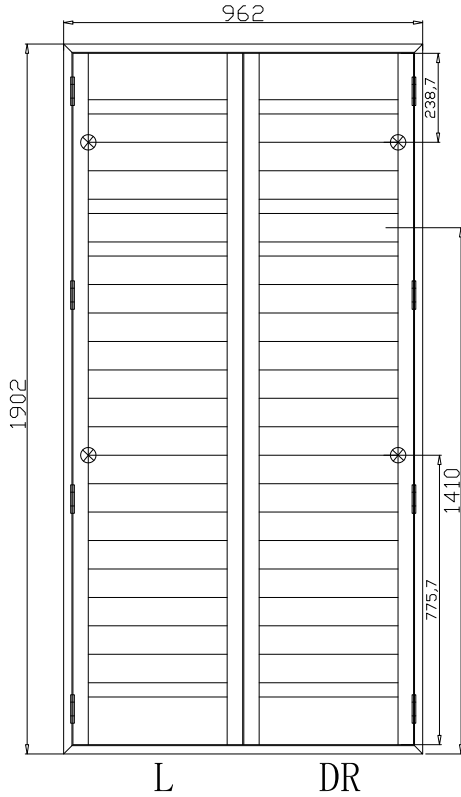
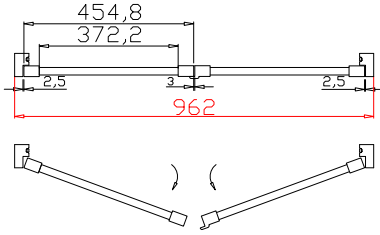
Item(序号): 1

Room(房间号):FBED R

Louvre Size(叶片类型): 89mm



Deep Plain L Frame 60mm



4

16

NOTES:

Shutter Color: Timeless White(覆盖色)

Hinges Color: White(白色)

Qty(数量): 1

Material(材质): Paulownia(桐木)

Configuration(窗扇结构): L-DR, IN, 4Side, 41.3mm Astrigal, Deep Plain L Frame 60mm

Tilt rod type(拉杆类型): Easy tilt rod(齿条拉杆)

Louvre Quantity(叶片数量): 40

Louvre Size(叶片尺寸): 370.2mm

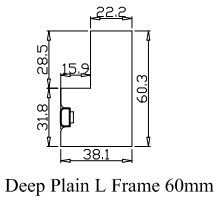
Rail Size(上下板尺寸): 422.2mm

Order No(订单号): SCO SB 7887 PEAT

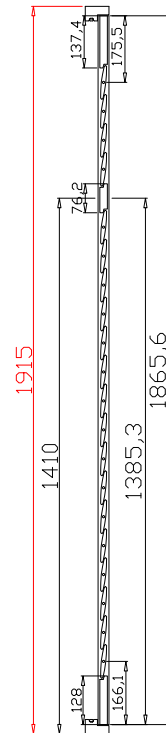
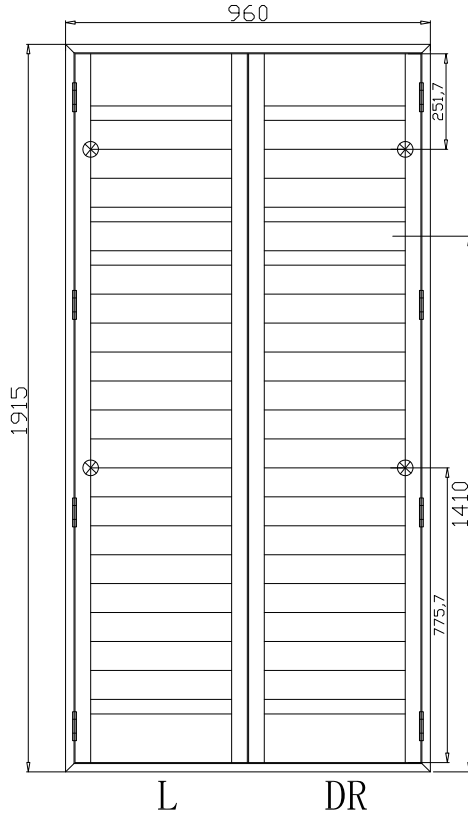
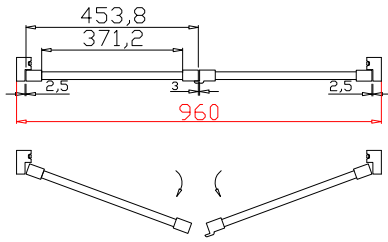
Item(序号): 2

Room(房间号): LIVING L

Louvre Size(叶片类型): 89mm



Deep Plain L Frame 60mm



4

16

NOTES:

Shutter Color:Timeless White(覆盖色)

Hinges Color:White(白色)

Qty(数量): 1

Material(材质): Paulownia(桐木)

Configuration(窗扇结构): L-DR,IN, 4Side, 41.3mm Astrigal, Deep Plain L Frame 60mm

Tilt rod type(拉杆类型): Easy tilt rod(齿条拉杆)

Louvre Quantity(叶片数量): 40

Louvre Size(叶片尺寸): 369.2mm

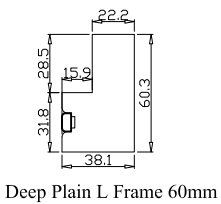
Rail Size(上下板尺寸): 421.2mm

Order No(订单号):SCO SB 7887 PEAT

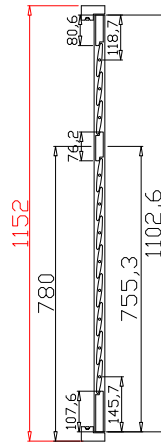
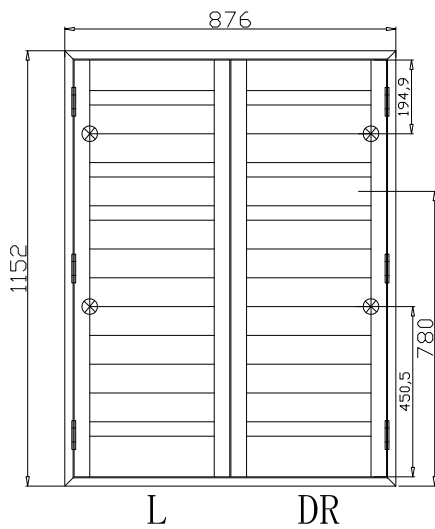
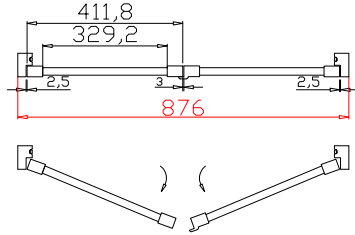
Item(序号): 3

Room(房间号):LIVING R

Louvre Size(叶片类型): 89mm



Deep Plain L Frame 60mm



3
8

NOTES:

Shutter Color:Timeless White(覆盖色)

Hinges Color:White(白色)

Qty(数量): 1

Material(材质): Paulownia(桐木)

Configuration(窗扇结构): L-DR,IN, 4Side, 41.3mm Astrigal, Deep Plain L Frame 60mm

Tilt rod type(拉杆类型): Easy tilt rod(齿条拉杆)

Louvre Quantity(叶片数量): 22

Louvre Size(叶片尺寸): 327.2mm

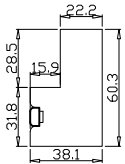
Rail Size(上下板尺寸): 379.2mm

Order No(订单号):SCO SB 7887 PEAT

Item(序号): 4

Room(房间号): DWN LEFT

Louvre Size(叶片类型): 89mm



Deep Plain L Frame 60mm