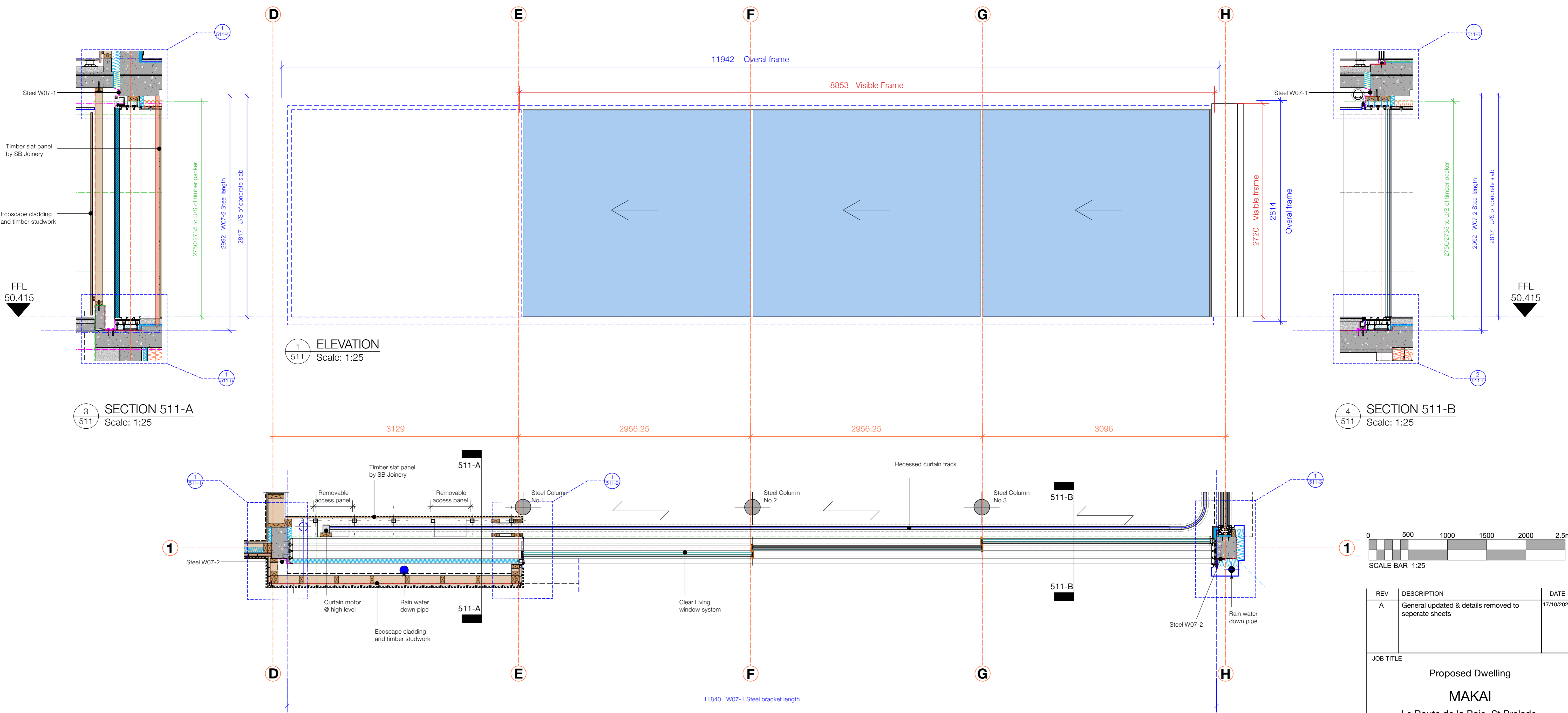


**GENERAL NOTES:**  
 This drawing must not be copied in whole or in part without prior written permission of Riva Architects Limited. This drawing must be read in conjunction with other architect's drawings & all schedules/Building Bye-Law check list and with all relevant structural engineering drawings, details and specifications. It is the contractor's responsibility to ensure that all work is carried out in accordance with all statutory requirements and to the approval of the building control officer (B.C.O). The contractor is responsible for the setting out of the works. Any discrepancy found between this drawing and any other architect's detail drawing, schedule and/or specification must be reported to the architect before the work is carried out. Do not scale from this drawing. Refer only to written dimensions. All dimensions must be checked on site. The relevant British Standards for materials and their uses are to be adhered to. Manufacturers installation & fitting instructions must be obtained and adhered to at all times.

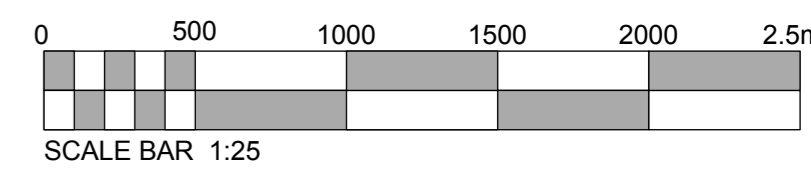


1 ELEVATION  
 511 Scale: 1:25

3 SECTION 511-A  
 511 Scale: 1:25

4 SECTION 511-B  
 511 Scale: 1:25

2 PLAN  
 511 Scale: 1:25



REV	DESCRIPTION	DATE
A	General updated & details removed to separate sheets	17/10/2025

JOB TITLE  
**Proposed Dwelling**  
**MAKAI**  
 Le Route de la Baie, St Brelade,  
 JE3 8EF  
 Mr & Mrs Cooke

DRAWING TITLE  
**CONSTRUCTION**  
 WINDOW / EXTERNAL DOOR DETAILS  
 W07 - Ground Floor - Kitchen

DATE	SCALE
AUGUST 2024	1:25 @ A1

JOB NO.	DRG NO.	REVISION	DRAWN
959	511	A	MTL

THIS DRAWING MUST BE READ IN CONJUNCTION WITH ALL OTHER ARCHITECTS DRAWINGS 511-1 TO 511-5 AND ALL CLEAR LIVING DRAWINGS

**RIVA ARCHITECTS**  
 1ST FLOOR, INDUSTRIA HOUSE,  
 RED HOUSES, ST. BRELADE,  
 JERSEY, JE3 8LD.  
 T +44 (0) 1534 49938  
 E office@riva-architects.com  
 W www.riva-architects.com  
 eco active member business