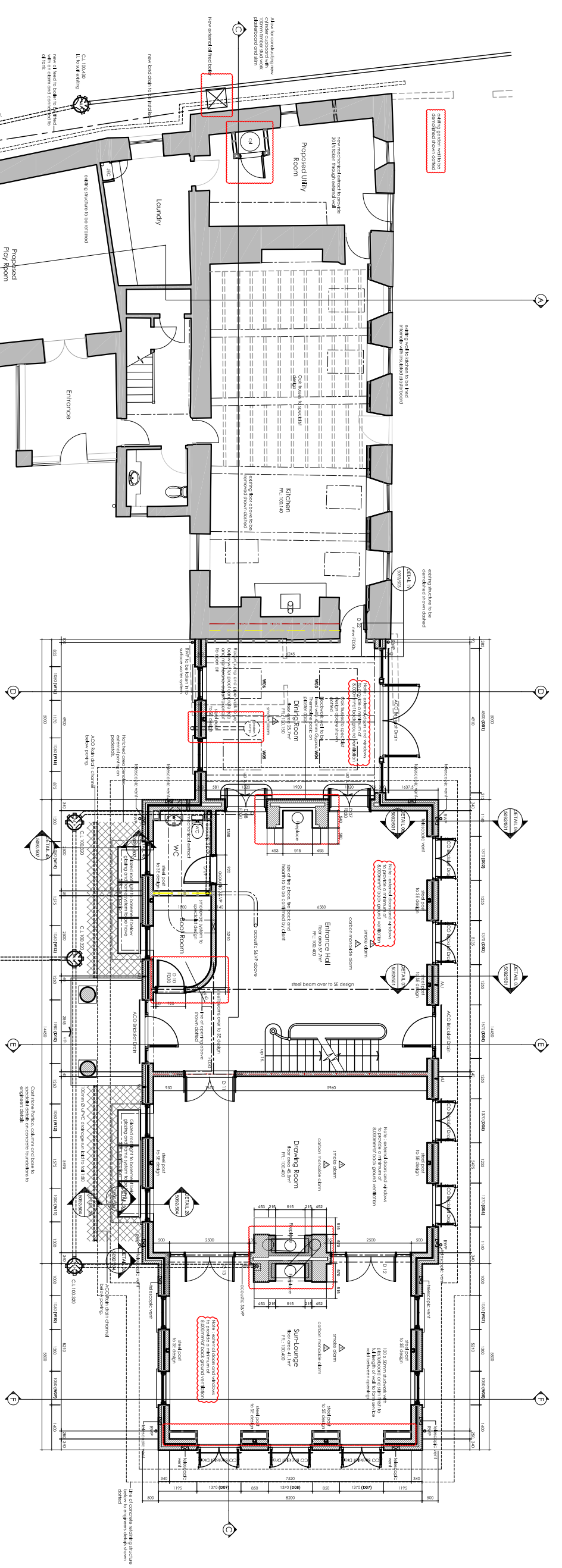


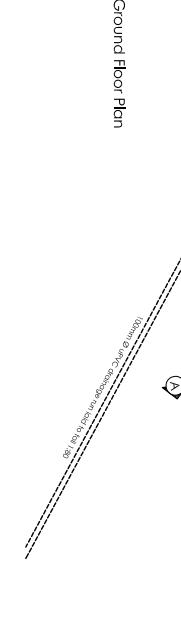


NORTH



NOTE: OPEN PLAN LAYOUT TO ENTRANCE HALL HAS TO BE APPROVED BY BUILDING CONTROL. AREA IS AT RISK

Ground Floor Plan



GENERAL NOTES	
1.	The drawings must be read in conjunction with all other information including the contract documents and shall be deemed to be a part of the contract documents.
2.	Any discrepancy between the drawings and the contract documents shall be resolved in favour of the contract documents.
3.	Any discrepancy between the drawings and the contract documents shall be resolved in favour of the contract documents.
4.	Any discrepancy between the drawings and the contract documents shall be resolved in favour of the contract documents.
5.	Any discrepancy between the drawings and the contract documents shall be resolved in favour of the contract documents.
6.	Any discrepancy between the drawings and the contract documents shall be resolved in favour of the contract documents.
7.	Any discrepancy between the drawings and the contract documents shall be resolved in favour of the contract documents.
8.	Any discrepancy between the drawings and the contract documents shall be resolved in favour of the contract documents.
9.	Any discrepancy between the drawings and the contract documents shall be resolved in favour of the contract documents.
10.	Any discrepancy between the drawings and the contract documents shall be resolved in favour of the contract documents.

PROJECT INFORMATION	
Project Name	La Maison du Haut, Lo Rue ville es Gazaux, St. Lawrence, Jersey.
Client	Mr. & Mrs. A Madecan.
Architect	morris architects
Scale	1:50 (AO)
Date	Oct17
Drawn By	ADA
Checked By	Rozeman

morris architects
 171 A, LA CROIX BLANCHE
 ST. LAWRENCE, JERSEY
 TEL: 00354 7900000
 WWW.MORRISARCHITECTS.COM

Project
 La Maison du Haut,
 Lo Rue ville es Gazaux,
 St. Lawrence,
 Jersey.

Client
 Mr. & Mrs. A Madecan.

Drawing
 Construction GA
 Ground Floor Plan

Date
 Oct17

Scale
 1:50 (AO)

Drawn By
 ADA

Checked By
 Rozeman

5092/202

A