

C + V 1130 x 2300
 V 2615 F/C
 T/W

Master Bed

Voiles & Curtains (voiles inside recess), only main curtain in reese profile

Side window, both ceiling fitted

(not going ahead with liv voiles for now but to take into consideration if she ever does as corner windows)

C 3750 x 2300
 T/W F/C
 plus reese

Master En Suite

Shutter - 1500mm high T/T, 2 Panels

810 x 2307 cut 2 MR
 L-76 3 side.

Hallway

Nothing

Rollers All BLS.

Bed 2

Shutter - 1500mm high T/T, 3 Panels, ghost post

1830
~~1750~~ x 2318
 +7 3 side L-50

Bed 3

Shutter - 1500mm high T/T, 3 Panels, ghost post

1830
~~1750~~ x 2318
 with Insert

Shutter - 1500mm high T/T, 2 Panels

GP 1070 Bath
 918 x 2322
 L-76 RR

Boardroom

Think this is on RHS when you go in front door - Voiles

1495 x 2360 R HC
 1625 x 2360 R
 1130 x 2360 L
 1800 R → 1855 x 2360 R
 1785 x 2360 R
 1190
 835 x 2320 LHS
 T/W F/C Full Inp'd

Kitchen/Liv Room

Hampton Boat House
 Manual Rollers

New Extension

Montego Hessian
 All manual Rollers - leave glass corners free

Eloc 990 x 2360
 R Manual

Sea Rock

1470 x 2430	R	1305 R
1495 x 2430	R	1495 L
1295 x 2430	L	1470 L

Outbuilding

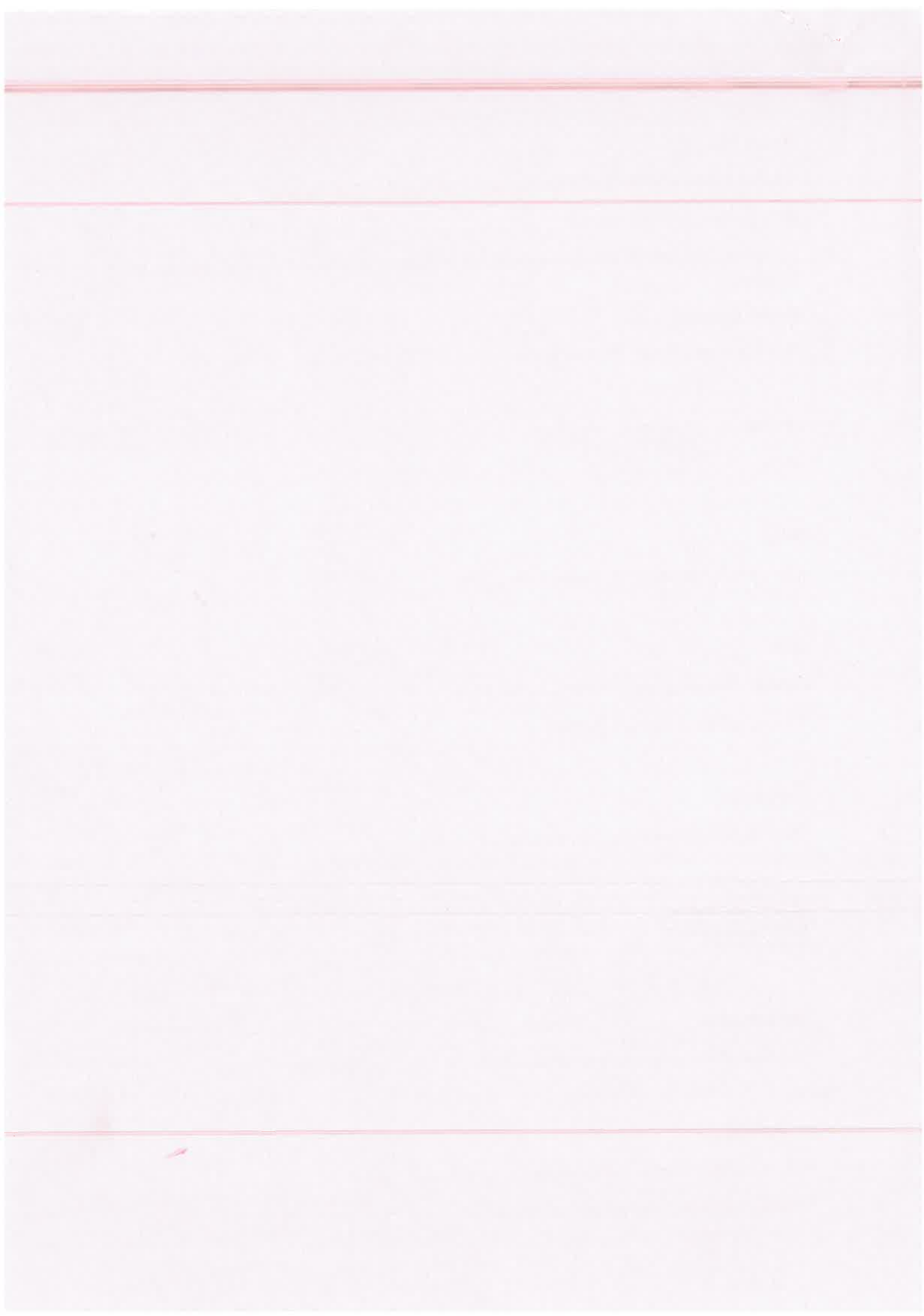
Voiles & Curtains - wave or double pleat (as mentioned above)

Shutter, 3 x 2 pairs of LR, split by 2 x T posts.

2170
 2195

3700 x 602
 L-46

3500 x 2215
 2550 x 2195 F/C
 F/C



SCL251134584 - CP Interiors



#3 Room	Bed 3	Range	Shutters - Fiji	Colour	Stain - Cherry	Width	1830mm	Height	2318mm	Shutter Type	Tier-on-Tier	Trade Price	£1,186.69
Batten #1		Type	Batten, 3 x 15	Colour	Stain - Cherry	Width	3mm	Depth	15mm	Length	2415mm	Qty	2
Batten #2		Type	Batten, 3 x 15	Colour	Stain - Cherry	Width	3mm	Depth	15mm	Length	1930mm	Qty	1
Notes													
#4 Room	Bed 3 Side	Range	Shutters - Fiji	Colour	Stain - Cherry	Width	918mm	Height	2322mm	Shutter Type	Tier-on-Tier	Trade Price	£636.69
Additional Shutter Options		Panel type	Regular	Tier on Tier Position	1500mm								
Midrail & Louvre		Midrail	None	Louvre	63mm	Tilt control	Silent Tilt	Split Position	mm	Split Position 2	mm		
Layout													
Frame Options		Frame	Beaded L Frame 76mm	Frame sides Top	Frame	Bottom	None	Left	Frame	Right	Frame	Frame sides	# 3; Build out
Stile & Hinge		Stile	41.3mm Beaded D-Mould Stile	Hinge type	Standard Hinge	Hinge colour	Antique Brass						
Fitted hardware		Side magnets	False	Roof Catch	False								
Batten #1		Type	Batten, 3 x 15	Colour	Stain - Cherry	Width	3mm	Depth	15mm	Length	1020mm	Qty	1
Batten #2		Type	Batten, 3 x 15	Colour	Stain - Cherry	Width	3mm	Depth	15mm	Length	2422mm	Qty	2
Notes													
#5 Room	Outbuilding	Range	Shutters - Fiji	Colour	Stain - Cherry	Width	3700mm	Height	602mm	Shutter Type	Full Height	Trade Price	£615.99
Additional Shutter Options		Panel type	Regular										
Midrail & Louvre		Midrail	None	Louvre	63mm	Tilt control	Silent Tilt	Split Position	mm	Split Position 2	mm		
Layout		Config	LRTLRLR	T Post Type	T-Post with insert 46mm	Posts	T1, 1233mm	T2, 2466mm					
Frame Options		Frame	Beaded L Frame 46mm	Build out	None								
Stile & Hinge		Stile	41.3mm Beaded D-Mould Stile	Hinge type	Standard Hinge	Hinge colour	Antique Brass						
Fitted hardware		Side magnets	False	Roof Catch	False								
Batten #1		Type	Batten, 3 x 15	Colour	Stain - Cherry	Width	3mm	Depth	15mm	Length	800mm	Qty	2
Notes													

Trade Discounted Price

Total Sqm	14.71	Total Trade Price	£4,187.31	Discount	-£1,779.60	Delivery	£0.00	Freight	£0.00	Sub Total With Discount	£2,407.71	VAT (20%)	£0.00	Total	£2,407.71
-----------	-------	-------------------	-----------	----------	------------	----------	-------	---------	-------	-------------------------	-----------	-----------	-------	-------	-----------

SCL251134584 - CP Interiors



Created by	Rachel Allo	Customer Information	Delivery Information	Order Notes
Group Order No	SC241133196	Title	Address Line 1	if possible, this full order is high priority and would appreciate any acceleration on the order, thank you. ***AWAITING CONFIRMATION OF STILES ON LINE 5***
SC Order No	SCL251134584	First Name	Address Line 2	
Total Shutter SQ/M	14.71	Last Name	Address Line 3	
Freight Method	Sea	Order Reference	Postcode	

#1 Room	Master En Suite	Range	Shutters - Fiji	Colour	Stain - Cherry	Width	810mm	Height	2307mm	Shutter Type	Tier-on-Tier	Trade Price	£561.25
Additional Shutter Options		Panel type	Regular	Tier on Tier Position		1500mm							
Midrail	& Louvre	Midrail	None	Louvre	63mm	Tilt control	Silent Tilt	Split Position	mm	Split Position 2	mm		
Layout		Config	RR										
Frame Options		Frame	Beaded L Frame	76mm	Frame	Frame sides Top	Frame	Bottom	None	Left	Frame	Right	Frame
Stile & Hinge		Stile	41.3mm Beaded D-Mould	Stile	Hinge type	Standard Hinge	Hinge colour	Antique Brass			Frame	Frame sides	# 3;
Fitted hardware		Side magnets	False	Roof Catch	False							Build out	None
Batten #1		Type	Batten, 3 x 15	Colour	Stain - Cherry	Width	3mm	Depth	15mm	Length	2407mm	Qty	2
Batten #2		Type	Batten, 3 x 15	Colour	Stain - Cherry	Width	3mm	Depth	15mm	Length	910mm	Qty	1

#2 Room	Bed 2	Range	Shutters - Fiji	Colour	Stain - Cherry	Width	1830mm	Height	2318mm	Shutter Type	Tier-on-Tier	Trade Price	£1,186.69
Additional Shutter Options		Panel type	Regular	Tier on Tier Position		1500mm							
Midrail	& Louvre	Midrail	None	Louvre	63mm	Tilt control	Silent Tilt	Split Position	mm	Split Position 2	mm		
Layout		Config	LLGR										
Frame Options		Frame	Insert L Frame	46mm	Frame	Frame sides Top	Frame	Bottom	None	Left	Frame	Right	Frame
Stile & Hinge		Stile	41.3mm Beaded D-Mould	Stile	Hinge type	Standard Hinge	Hinge colour	Antique Brass			Frame	Frame sides	# 3;
Fitted hardware		Side magnets	False	Roof Catch	False							Build out	None
Batten #1		Type	Batten, 3 x 15	Colour	Stain - Cherry	Width	3mm	Depth	15mm	Length	1930mm	Qty	1
Batten #2		Type	Batten, 3 x 15	Colour	Stain - Cherry	Width	3mm	Depth	15mm	Length	2415mm	Qty	2

#3 Room	Bed 3	Range	Shutters - Fiji	Colour	Stain - Cherry	Width	1830mm	Height	2318mm	Shutter Type	Tier-on-Tier	Trade Price	£1,186.69
Additional Shutter Options		Panel type	Regular	Tier on Tier Position		1500mm							
Midrail	& Louvre	Midrail	None	Louvre	63mm	Tilt control	Silent Tilt	Split Position	mm	Split Position 2	mm		
Layout		Config	LLGR										
Frame Options		Frame	Insert L Frame	46mm	Frame	Frame sides Top	Frame	Bottom	None	Left	Frame	Right	Frame
Stile & Hinge		Stile	41.3mm Beaded D-Mould	Stile	Hinge type	Standard Hinge	Hinge colour	Antique Brass			Frame	Frame sides	# 3;
Fitted hardware		Side magnets	False	Roof Catch	False							Build out	None

C + V 1130 x 2300

V 2615 F/C
T/W

Master Bed

Voiles & Curtains (voiles inside recess), only main curtain in reese profile

Side window, both ceiling fitted

(not going ahead with liv voiles for now but to take into consideration if she ever does as corner windows)

C 3790 x 2300
T/W F/C
plus Reese

Master En Suite

Shutter - 1500mm high T/T, 2 Panels

810 x 2307 cot 2 NR
L-76 3 side.

Hallway

Nothing

Rollers
All B/S.

Bed 2

Shutter - 1500mm high T/T, 3 Panels, ghost post

1830
~~1750~~ x 2318
+7 3 side L-50
with

Bed 3

Shutter - 1500mm high T/T, 3 Panels, ghost post

1830
~~1750~~ x 2318
Inserts

Shutter - 1500mm high T/T, 2 Panels

GP 1070.
Both

918 x 2322
L-76 RR

Boardroom

Think this is on RHS when you go in front door - Voiles

1495 x 2360 R HC
1625 x 2360 R
1190 x 2320 LHS
835 F/C Full
T/W Inserts

Kitchen/Liv Room

Hampton Boat House
Manual Rollers

1130 x 2360 L
1800 R → 1855 x 2360 R
1785 x 2360 R
1665 x 2360 L

New Extension

Montego Hessian
All manual Rollers - leave glass corners free

1470 x 2430 R 1305 R
1495 x 2430 R 1495 L
1295 x 2430 L 1470 L

Elec 990 x 2360
R/ndar

Outbuilding

Voiles & Curtains - wave or double pleat (as mentioned above)

Shutter, 3 x 2 pairs of LR, split by 2 x T posts.

2170
2195

3700 x 602
L-46

3500 x 2215
2550 x 2195 F/C
T/W F/C
- Flood



5016069

C + V 1130 x 2300
V 2615 F/C
T/W

Master Bed

Voiles & Curtains (voiles inside recess), only main curtain in reese profile

Side window, both ceiling fitted

(not going ahead with liv voiles for now but to take into consideration if she ever does as corner windows)

C 3790 x 2300
T/W F/C
plus Reese

Master En Suite

Shutter - 1500mm high T/T, 2 Panels

810 x 2307 COT 2 W/P
L-76 3 side.

Hallway

Nothing

Rollers
All B/S.

Bed 2

Shutter - 1500mm high T/T, 3 Panels, ghost post

1830
~~1750~~ x 2318
+7 3 side L-56
with

Bed 3

Shutter - 1500mm high T/T, 3 Panels, ghost post

1830
~~1750~~ x 2318
Insert

Shutter - 1500mm high T/T, 2 Panels

GP 1070. ~~FF~~
Both 918 x 2322
L-76 RR

Boardroom

Think this is on RHS when you go in front door - Voiles

1190
1495 x 2360 R (H.C.?)
1625 x 2360 R
835 x 2320 LHS
T/W F/C Full
SC6010 Inp'd

Kitchen/Liv Room

Hampton Boat House
Manual Rollers

1130 x 2360 L
1800 R → 1855 x 2360 R
1785 x 2360 R
1665 x 2360 L

New Extension

Montego Hessian
All manual Rollers - leave glass corners free

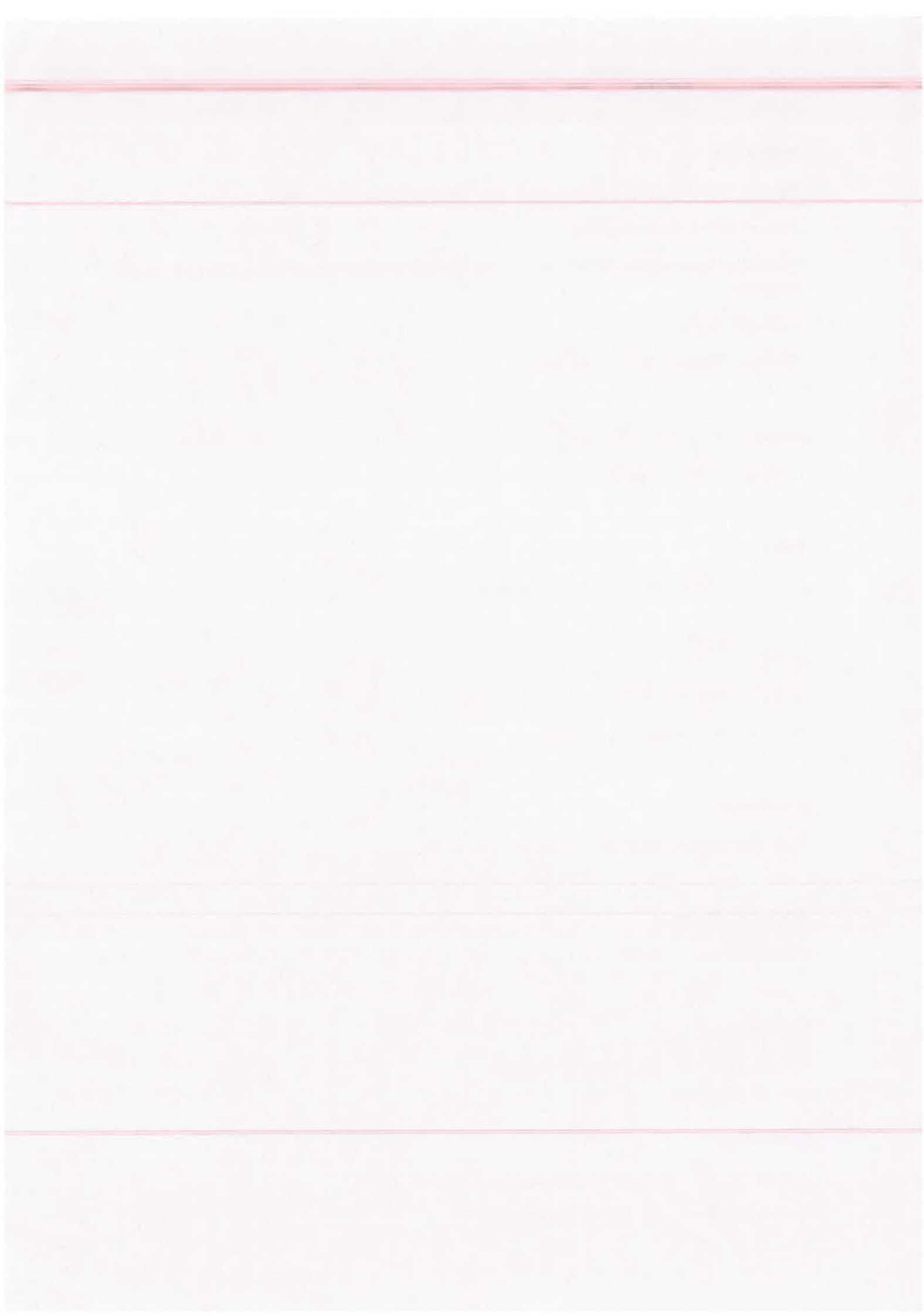
Elec 990 x 2360 Sea Rick
R/ndal
1470 x 2430 R 1305 R
1495 x 2430 R 1495 L
1295 x 2430 L 1470 L

Outbuilding

Voiles & Curtains - wave or double pleat (as mentioned above)

Shutter, 3 x 2 pairs of LR, split by 2 x T posts.

3700 x 602
L-46
3500 x 2215.
2170
2550 x 2195 F/C
F/C
Allow 5mm for floor + usual products



PREMIERCHOICE

MANUFACTURERS OF QUALITY CUSTOM MADE CURTAINS, PELMETS AND BLINDS

CP INTERIORS JERSEY
RUE DES PRES TRADING ESTATE
ST SAVIOUR
JERSEY
JE2 7QN

Re: 10977 / 1 - SO16069 WISHING WELL

02 July 2025

Dear Customer,

THIS IS AN ESTIMATE ONLY. SHOULD YOU WISH TO PLACE AN ORDER KINDLY SEND A DETAILED WORKSHEET WHERE POSSIBLE USING THE PREMIER CHOICE ORDER FORM TO orders@premierchoice.co.uk

We thank you for your enquiry and we have the pleasure in estimating you as follows:

MASTER BEDROOM

1 Voile Double Pinch Pleat Railroaded	£	90.97
Rail size of 112.5cm, Drop of 231cm, Overall rail size: 112.5cm, 2.7 Mts in each		
Making:	2.6	Mts
Fabric: Wide fabric - 300cm wide, no repeat	2.7	mts
Snake weight to hem (Bottom)		

281

MASTER BEDROOM

1 Curtain Double Pinch Pleat Unlined, Hand Finished Unlined	£	123.60
Rail size of 112.5cm, Drop of 231cm, Overall rail size: 112.5cm, 3.0 Mts in each		
Making:	3	Widths
Fabric: Wide fabric - 300cm wide, no repeat	3	mts
Snake weight to hem (Bottom)		

327

MASTER BEDROOM

1 Voile Double Pinch Pleat Railroaded	£	213.44
Rail size of 262cm, Drop of 231cm, Overall rail size: 262cm, 6.2 Mts in each		
Making:	6.1	Mts
Fabric: Wide fabric - 300cm wide, no repeat	6.2	mts
Snake weight to hem (Bottom)		

565

MASTER BEDROOM

1 Curtain Double Pinch Pleat Unlined, Hand Finished Unlined	£	498.36
Rail size of 379cm, Drop of 231cm, Overall rail size: 379cm, 9 Mts in each		
Making:	7	Widths
Fabric: Wide fabric - 300cm wide, no repeat	9	mts
Snake weight to hem (Bottom)		

1321

HALLWAY

1 Voile Double Pinch Pleat Railroaded	£	171.46
Rail size of 213cm, Drop of 230.5cm, Overall rail size: 213cm, 5.0 Mts in each		
Making:	4.9	Mts
Fabric: Wide fabric - 300cm wide, no repeat	5	mts
Snake weight to hem (Bottom)		

454

-25mm

END HALLWAY

1 Voile Double Pinch Pleat Railroaded		£	80.48
Rail size of 100cm, Drop of 230.5cm, Overall rail size: 100cm, 2.4 Mts in each			
Making:	2.3	Mts	253
Fabric: Wide fabric - 300cm wide, no repeat	2.4	mts	
Snake weight to hem (Bottom)			

LIVING ROOM

1 Voile Double Pinch Pleat Railroaded		£	104.97
Rail size of 130cm, Drop of 236cm, Overall rail size: 130cm, 3.1 Mts in each			
Making:	3	Mts	318
Fabric: Wide fabric - 300cm wide, no repeat	3.1	mts	
Snake weight to hem (Bottom)			

LIVING ROOM

1 Voile Double Pinch Pleat Railroaded		£	150.46
Rail size of 186cm, Drop of 236cm, Overall rail size: 186cm, 4.4 Mts in each			
Making:	4.3	Mts	398
Fabric: Wide fabric - 300cm wide, no repeat	4.4	mts	
Snake weight to hem (Bottom)			

LIVING ROOM

1 Voile Double Pinch Pleat Railroaded		£	293.92
Rail size of 361cm, Drop of 236cm, Overall rail size: 361cm, 8.5 Mts in each			
Making:	8.4	Mts	780
Fabric: Wide fabric - 300cm wide, no repeat	8.5	mts	
Snake weight to hem (Bottom)			

LIVING ROOM

1 Voile Double Pinch Pleat Railroaded		£	335.90
Rail size of 415cm, Drop of 236cm, Overall rail size: 415cm, 9.7 Mts in each			
Making:	9.6	Mts	890
Fabric: Wide fabric - 300cm wide, no repeat	9.7	mts	
Snake weight to hem (Bottom)			

OUTHOUSE

1 Voile Double Pinch Pleat Railroaded		£	209.94
Rail size of 260cm, Drop of 236cm, Overall rail size: 260cm, 6.1 Mts in each			
Making:	6	Mts	556
Fabric: Wide fabric - 300cm wide, no repeat	6.1	mts	
Snake weight to hem (Bottom)			

OUTHOUSE

1 Curtain Double Pinch Pleat Unlined, Hand Finished Unlined		£	498.36
Rail size of 370cm, Drop of 231cm, Overall rail size: 370cm, 9 Mts in each			
Making:	7	Widths	1320
Fabric: Wide fabric - 300cm wide, no repeat	9	mts	
Snake weight to hem (Bottom)			

Others Subtotal: £ 2,771.86

Total: £ 2,771.86

Bed 3 ~~218~~⁹¹⁸ * 2322 BR L-78

~~2340~~ Kitchen 2305 floor-ceiling track width. | RHS. 3740

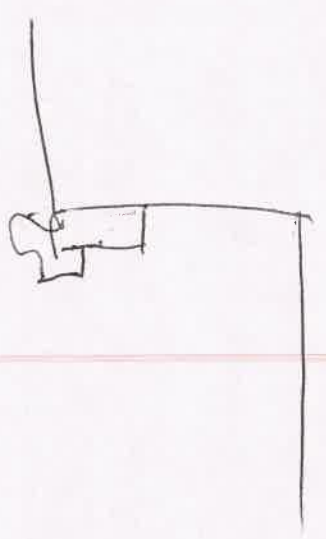
Roller 1495 * 2360 1638

Liv Room Roller 1135 Curtain

1860 1300
1500 * 2360 1860
1780 3616
1665 4150
990 * may need Reducing.

Outhouse 3700 Approx * 700 drop

voiles 2600 * 2256
curtain 3700 * 2250



Staff Name Adrian

Work Diary

Order No SO16113
Measurer
Measurer or Fitter

Contact Address
Mitchell Building Contractors, Unit 1A, St Peters Technical Park, La Grande
Route De St Pierre, St Peter, JE3 7ZN, 07797 744 900, 07797 744 900,
simon@mitchell.ie

Customer Ref

Date 10-09-2024
Time 16:00

Notes : WISHING WELL
Final Measure Rollers - All manual solatex + 1 motorised hardwired.

~~4250~~
P 70

Location	Supplier	Blind Type /Description	Colour	Qty	Width	Drop	Fitting Height	Blind/Recess	Controls	Brackets	Surface	Unit Price
rear	Extensions			1	1300	2470		QR	L			
				1	1500	2470			L			
				1	1480	2470			R			
Front				1	1480	2470						
				1	1500	2470						
				1	1300	2470						
Kitchen				1	1500	2770		RI	L			
Doors				1	1630	2370		-	R			
LN				1	1130	2370		u	L			
				1	1855	2370		u	R			
				1	1810	2370			L			
				1	1795	2370			R			
				1	1775	2370		u	L			

Comments:

Electric 1 x 995 x 2350

RHM

Order Date

18.5.

Customer Signature

X

I have checked and agree with the above choices

Target Fitting Date

Hall Curtain track

Bed 2

Bed 3

2135 x 2310 F/c
T/W

2305 x 2330 F/c
T/W

2300 x 2335 F/c
T/W

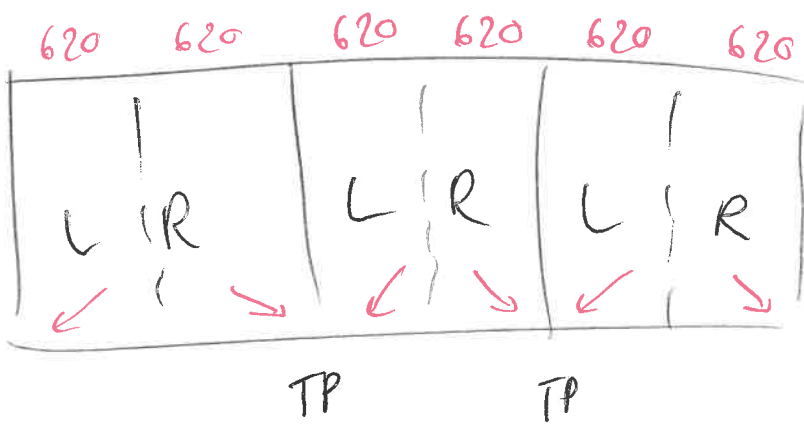
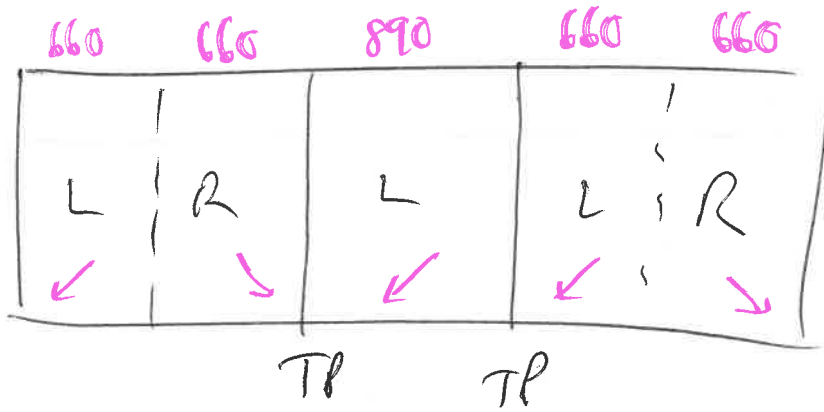
1435 x 2335 F/c
T/W

Recess track

~

~

~



Julien

Sample Curtain

Needs curtain tracks measuring

Eigenschaften

plus

Sample Curtain AS ps

trade, small left hand window
next to fire place, Righthand side

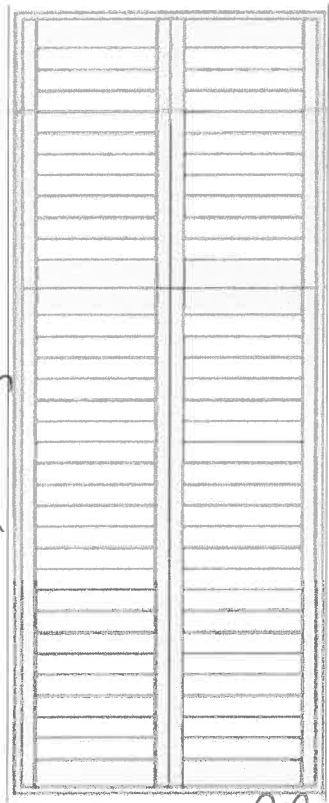
1900 x 5170 F/c

Trade in Rease profile



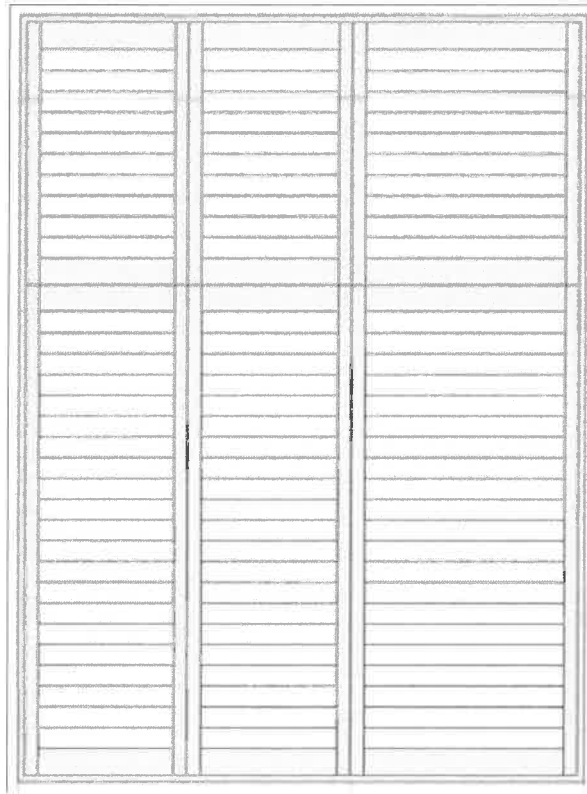
- 3mm floor.

1500mm
3 sided



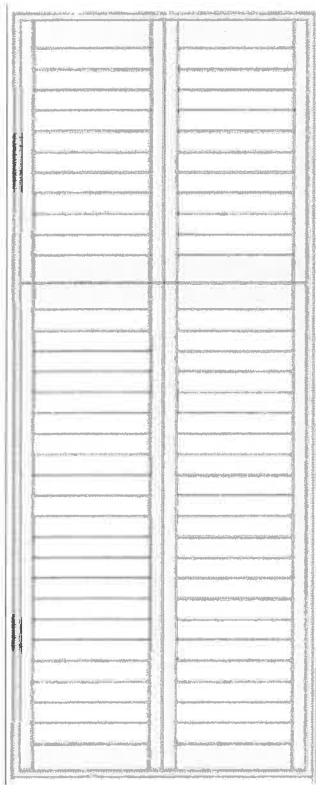
Master En Suite

RR →



Bed 2

←
LL



Bed 3



Bed 3

Roller
Kitchen - Montega
Hessian

Roller
Liv - Hampton Boat House

1800mm

1700
control split

1000
midrail

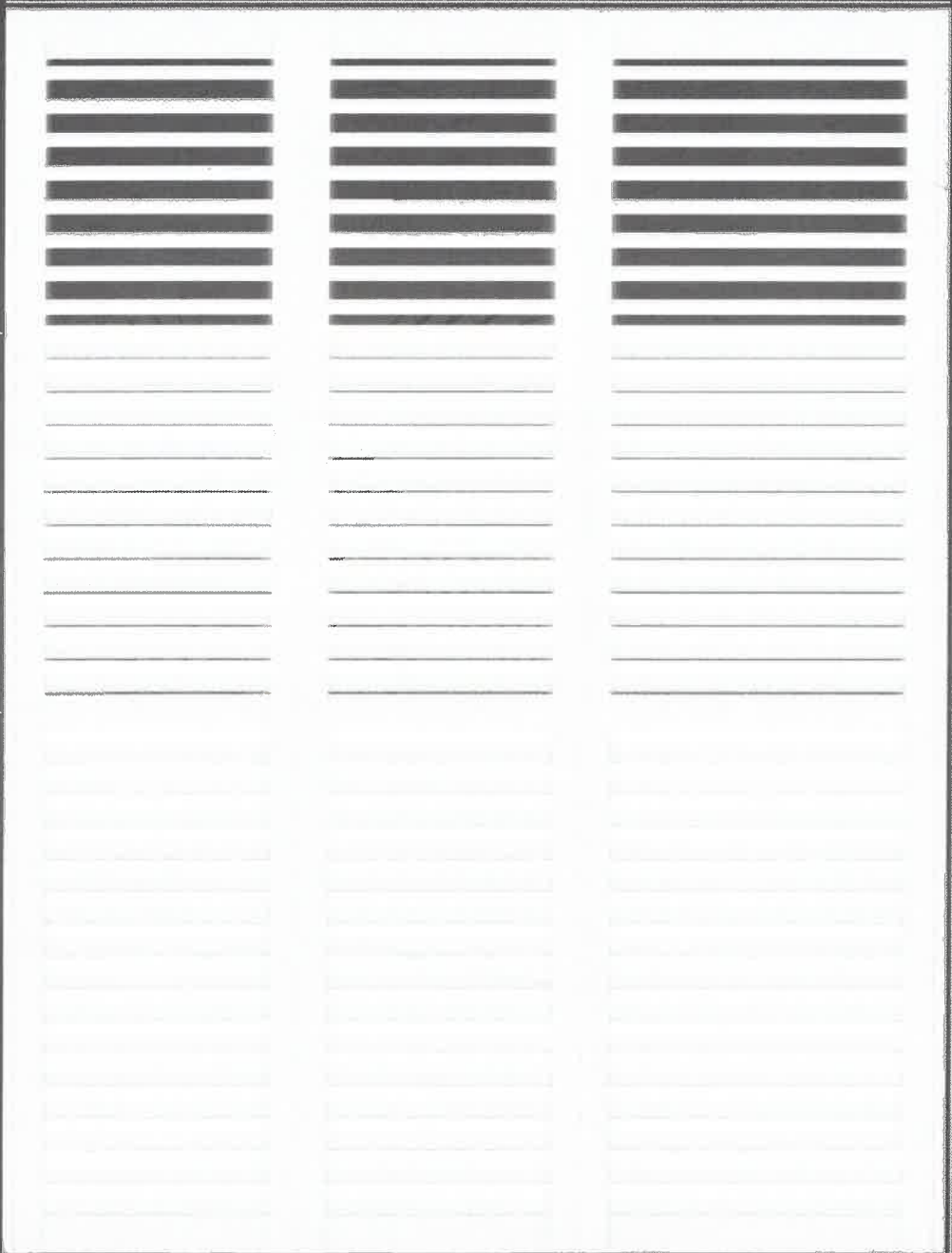
2300mm

L

L

U
1100

R



D

Mitchells, wishing well,
st oven

Supersced



CP INTERIORS

Harvey Mitchell
Mitchell Building Contractors
Unit 1A
St Peters Technical Park
La Grande Route De St Pierre
St Peter
JE3 7ZN

Date	Reference	Your Contact
12-12-2023	SO15253	Rachel
Customer Ref.		
Wishing Well, Living Room Manual Roller Option		

Quote

Our Price Promise to you
We are so confident our pricing is competitive, that we will beat any written quotation for equivalent product by 5%

Location	Description	QTY	Price
Living Room - Manual Option	Supply & Fit. Roller blind, in a Solatex Alu 3% silver back mesh fabric, colour to be confirmed. Manual operation with silver side chain	7	£ 3,812.00
Living Room	Supply & Fit. Curtain Making, 80/160mm Wave voile with 75mm bottom hem and lead weight	5	£ 2,261.00
Living Room	Supply only- Fabric, 35m fabric for all voiles, based on Warwick Skatnos FR White, wide width as guide @ £40 per/m, wide width as guide @ £40 per/m.	1	£ 1,400.00
Living Room	Supply & Fit. Curtain Pole / Track, SG6970 Silent gliss manual track in white with wave gliders. Top fixed into reese profile	5	£ 3,287.00
Master Bedroom	Supply & Fit. Roller blind, in a blackout fabric (band c) colour to be confirmed. Operated with a handwired Somfy Sonnesse 40 RTS motor and silho 5 remote control	2	£ 1,413.00
Master Bedroom	Supply & Fit. Curtain Making, 80/160mm Wave voile with 75mm bottom hem and lead weight	2	£ 864.00
Master Bedroom	Supply only- Fabric, 13m fabric for all voiles, based on Warwick Skatnos FR White, wide width as guide @ £40 per/m, wide width as guide @ £40 per/m.	1	£ 520.00
Master Bedroom	Supply & Fit. Curtain Pole / Track, SG6970 Silent gliss manual track in white with wave gliders. Top fixed into reese profile	2	£ 1,888.00
Bedroom 2	Supply & Fit. Curtain Making, 80/160mm Wave voile with 75mm bottom hem and lead weight	1	£ 445.00
Bedroom 2	Supply only- Fabric, 7m fabric for all voiles, based on Warwick Skatnos FR White, wide width as guide @ £40 per/m	1	£ 280.00
Bedroom 2	Supply & Fit. Curtain Pole / Track, SG6970 Silent gliss manual track in white with wave gliders. Top fixed into reese profile	1	£ 637.00
Bedroom 3	Supply & Fit. Curtain Making, 80/160mm Wave voile with 75mm bottom hem and lead weight	1	£ 445.00
Bedroom 3	Supply & Fit. Curtain Pole / Track, SG6970 Silent gliss manual track in white with wave gliders. Top fixed into reese profile	1	£ 637.00
Bedroom 3	Supply only- Fabric, 7m fabric for all voiles, based on Warwick Skatnos FR White, wide width as guide @ £40 per/m.	1	£ 280.00
Bedroom 3	Supply & Fit. Curtain track recess profile fitting brackets, TTSG1 Fixing bracket clips for all SG Curtain tracks in Reese profiles.	97	£ 518.95
			Excludes electrical works.

Terms : 40% deposit due with order, 40% on delivery & final 20% on completion

BACS Payment	Bank: NatWest Sort Code: 60 12 03 Account No: 66677772 Carpet Protection (C.) Ltd T/A CP Interiors	Phone and Card Payment	Payment can be made in person or by phone. If phone, please call us on 01534 768141 and have your card details ready. Note, we do not accept American Express or Cheque payments.	Subtotal : £ 18,487.95
				GST : £ 924.40
				Total : £ 19,412.35

x 1 Quote Blind space
x 2 Quote window Dressings
option 1 + Option 2.

Please note: This quotation is only valid for acceptance for 14 days. Our estimate does not include any electrical work or additional carpentry work to install the above unless otherwise specified. Please note there is a handling charge on customer own fabric of £7.50 per metre. Due to high costs of labour, pre-arranged missed fitting appointments will be charged on a time-wasted basis. Settlement is due on completion of works and an administration charge of £25 will be added per month if unpaid within 30 days. We reserve the right to charge for design, advice and liaison work carried out should an order not be placed. Goods remain the property of CP Interiors until full settlement is received. Should payment not be received we reserve the right to attend premises during working hours to remove goods and not be required to make good. Our full terms and conditions apply and are available on request.

CERTIFICATE OF INDEMNITY
(Sub-Contractor to Main Contractor)

We, Carpet Protection (C.I.) Limited (t/a CP Interiors) in consideration of receiving from Mitchell Building Contractors Limited, (hereinafter known as the Main Contractor) payment on account in the sum of £4,023.20 (ex GST) or such lesser sum as may have become payable after the deduction of retention monies and discount, hereby agree, declare and undertake as follows:-

- (1) We acknowledge that upon receipt of the above amount in relation to our Deposit Invoice SO15253, dated 4th September 2024 for the supply and fitting of hardwood shutters as described on the aforementioned invoice and hold completed items at our premises situated at CP Interiors, La Rue le Gros, La Rue des Pres Trading Estate, St. Saviour, JE2 7QP, for and on behalf of the Main Contractor and as their property the materials detailed in the quotation hereto which we have undertaken to supply and install at the site known as 'Wishing Well', St Ouen, Jersey (hereinafter called the "Site") under the conditions of a Sub-Contract between us and the Main Contractor.
- (2) We declare that the said materials shall be ascertained and clearly marked to indicate that they are the property of the Main Contractor and we undertake to ensure that the said materials remain readily identifiable and upon completion of manufacture, the said materials will be adequately protected in a secure, dry location and remain clearly marked to indicate that they are the property of the Main Contractor.
- (3) In the event that any of the Goods have been ordered from or supplied by a third party, the contract for their supply to the Subcontractor is in writing and full title to the Goods so ordered or supplied has passed to the Subcontractor with full title guarantee without any retention of title exercised by any third party and free from any charge mortgage lien or any other encumbrance whatsoever
- (4) Without prejudice to any of the terms of the Subcontract, the Subcontractor agrees that the Employer may at any time upon giving reasonable notice by its servants or agents or otherwise enter upon the premises where the Goods are stored for the purpose of inspecting any part of the Goods for which payment has been made.
- (5) We indemnify the Main Contractor against any loss or damage whatsoever (except loss or damage caused by or as a result of war) of or to the said materials whilst they are in our possession or in transit to the Site and we undertake to affect adequate insurance against these risks and, if required, to satisfy you that this has been done.
- (6) We undertake that the said materials shall be delivered at the Site when required by the Main Contractor.

(7) This Certificate of Indemnity and any dispute or difference arising between the parties to it shall be subject to Jersey Law and the exclusive jurisdiction of the Royal Court.

DATE:05/09/2024.....

SIGNED FOR AND ON BEHALF OF CP INTERIORS

BY.....
KERANA TAFI.

Staff Name Adrian

Work Diary

Order No SO15253Q1

Measurer or Fitter Measurer

Contact Address Mitchell Building Contractors, Unit 1A, St Peters Technical Park, La Grande Route De St Pierre, St Peter, JE3 7ZN, 07797 744 900, 07797 744 900, simon@mitchell.je

Customer Ref

Wishing Well, Living Room Motorised Roller Option

Date

12-07-2024

Time

14:00

Notes : Living Room 5 x Curtain Making 0 by 2500, Living Room 5 x Curtain Pole / Track 0 by 0, Master Bedroom 2 x Roller blind 1350 by 2500, Master Bedroom 2 x Curtain Making 0 by 2500, Master Bedroom 2 x Curtain Pole / Track 0 by 0, Bedroom 2 1 x Curtain Making 3100 by 2350, Bedroom 2 1 x Curtain Pole / Track 3100 by 0, Bedroom 3 1 x Curtain Making 3100 by 2350, Bedroom 3 1 x Curtain Pole / Track 3100 by 0, Living Room - Motorised Option 11 x Roller blind 0 by 0, Bedroom 3 1 x Fabric 0 by 0, Bedroom 2 1 x Fabric 0 by 0, Master Bedroom 1 x Fabric 0 by 0, Living Room 1 x Fabric 0 by 0, 97 x Curtain track recess profile fitting brackets 0 by 0, 1 x . 0 by 0

Location	Supplier	Blind Type /Description	Colour	Qty	Width	Drop	Fitting Height	Blind/Recess	Controls	Brackets	Surface	Unit Price
Bed 1				1	1130	2300						1173
Window												
" "				1	2615	2300		L-60				3066
Doors		ensuite			805	2310		4 sided				
Bed 2				4	842							
				1	1724	2315		cut L LSPR				1868
					SP		1612	mid	1050			
						4	Side	L-60				
Bed 3				1	1710	2320		cut L LSPR				1857
						SP 1000		mid	1050			
" "				1	925	2320						1020
								mid	1050			
								4 Side	L-60			

Comments:

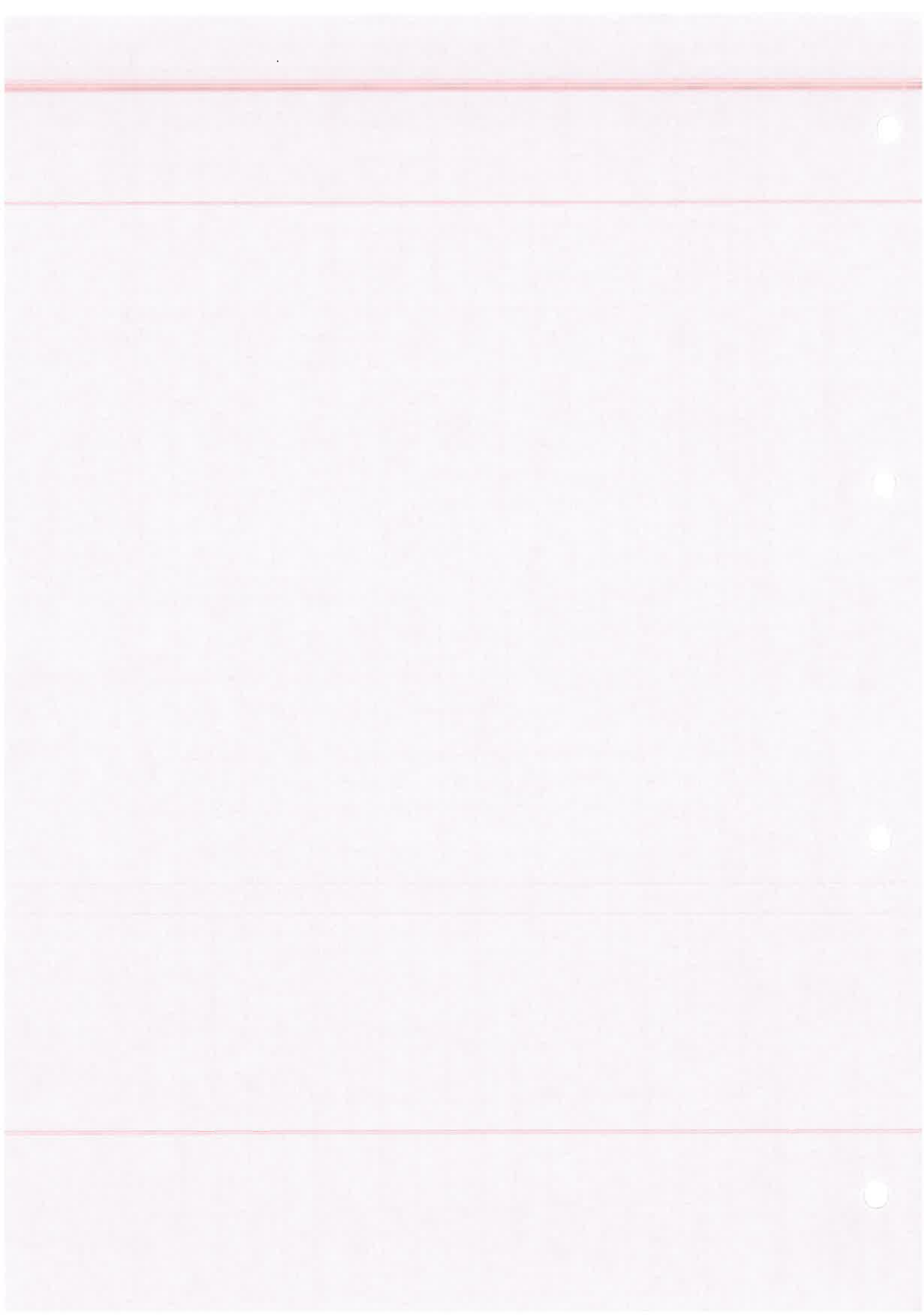
full height shutters

Order Date

Customer Signature

X I have checked and agree with the above choices

Target Fitting Date



Rachel Baugh

From: Simon Smith <simon@mitchell.je>
Sent: 23 August 2024 14:52
To: Rachel Baugh
Cc: Tim Gibbons; Dominik Lopatko; Adrian Colston-Weeks; Allister Moore
Subject: RE: Wishing well Main Bed shutters

Hi Rachel,

As Tim is on holiday until the 2nd of September my understanding from the discussion on site are as follows –

Master Bath

- (1) 1 x full height shutter – (highlighted in Blue)

Master bed 1

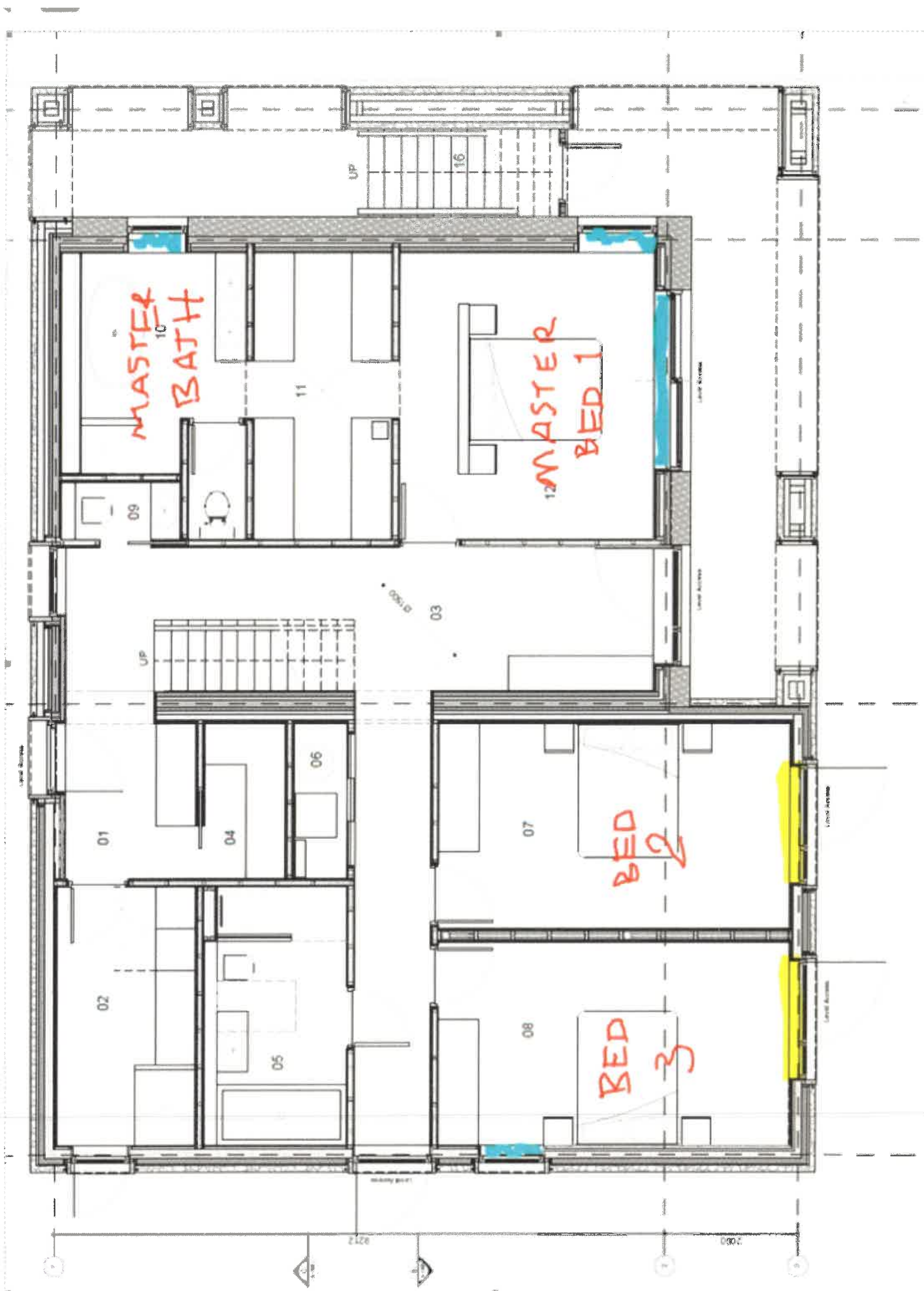
- (1) Full height bi-folding Shutter to large sliders (highlighting in Blue)
- (2) Full height shutter to small side window (highlighted in Blue)

Bed 2

- (1) Tier on Tier height shutter to door/screen (as per previous email below) – (highlighted in yellow)

Bed 3

- (1) Tier on Tier height shutter to door/screen (as per previous email) – (highlighted in yellow)
- (2) Full heigh Shutter to small side window (highlighted in Blue)



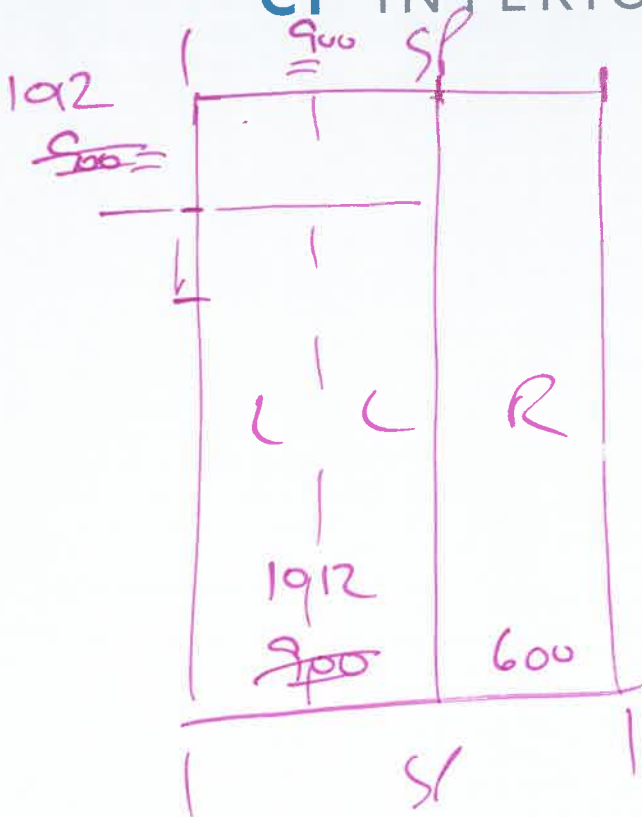
PROPOSED GROUND FLOOR PLAN
SCALE 1:50 @ A1

KEY

GROUND FLOOR



CP INTERIORS



Blinds
Shutters
Dust
Pink



Staff Name Adrian

Work Diary

Order No SO15242

Measurer or Fitter Measurer

Contact Address Mitchell Building Contractors, Unit 1A, St Peters Technical Park, La Grande Route De St Pierre, St Peter, JE3 7ZN, 07797 744 900, 07797 744 900, simon@mitchell.je

Customer Ref

Wishing Well, st ouens

Date

01-12-2023

Time

09:00

PTD

Notes : re Wishing Well in St Ouen

Location	Supplier	Blind Type /Description	Colour	Qty	Width	Drop	Fitting Height	Blind/Recess	Controls	Brackets	Surface	Unit Price
LIV		Rollerblinds	AW	1	1200	2500		A	Manual Top			
			Screen	2	1600	2500	off 1	A				
			-	2	1850	2500		A				
		(OR)		2	1800	2500		A				
		240 UK RIS		1	1200	2500		A				
		sample		2	1000	2500	off 2					
				4	950	2500						
				4	900	2500						
Blinds		Curtains										
LIV		+ Tracks										
		For these profile	50	15253								
		Single wave		1	38W	2800		A				853
		Curtain unlined		1	1500							343
		Vuile		1	2000							441
				1	3700							786
				1	4200							884

Comments:

Order Date

Customer Signature

X I have checked and agree with the above choices

Target Date

masses

~~Bed~~
Bed

~~Bed~~ Curtain Ring 1200 x 2500

on SS trade 4400 x 2500
in rese profit

rollers 2400K 265 Eledn-

2 x 1350 x 2500

Bed 2

n 3

Curtain Ring 3100 x 2550
on SS trade in rese profit

2016 336

1552

1888

Work Diary

Staff Name: Adrian

Customer Ref: Wishing well

Contact Address: Mitchell Building Contractors, Unit 1A, St Peters Technical Park, La Grande Route De St Pierre, St Peter, JE3 7ZN, 07797 744 900, 07797 744 900, simon@mitchell.je

Order No: SO15253

Measurer or Fitter: Measurer

Date: 01-12-2023

Time: 08:00

Notes: blind space box 100 x 100 plus reese track

Location	Supplier	Blind Type /Description	Colour	Qty	Width	Drop	Fitting Height	Blind/Recess	Controls	Brackets	Surface	Unit Price
Top Floor		Blind SPACE Box 100x100		3	6000	lengths					1064.28 per length	
n		Reese profile		3	6000	lengths					492.12 per length	
1st Floor		Blind SPACE 100 x 100		1	6000	lengths						
MASTER Bed		Reese profile		2	6000	lengths						
Bed 2		n		1	1000	cut lengths						
n 3												

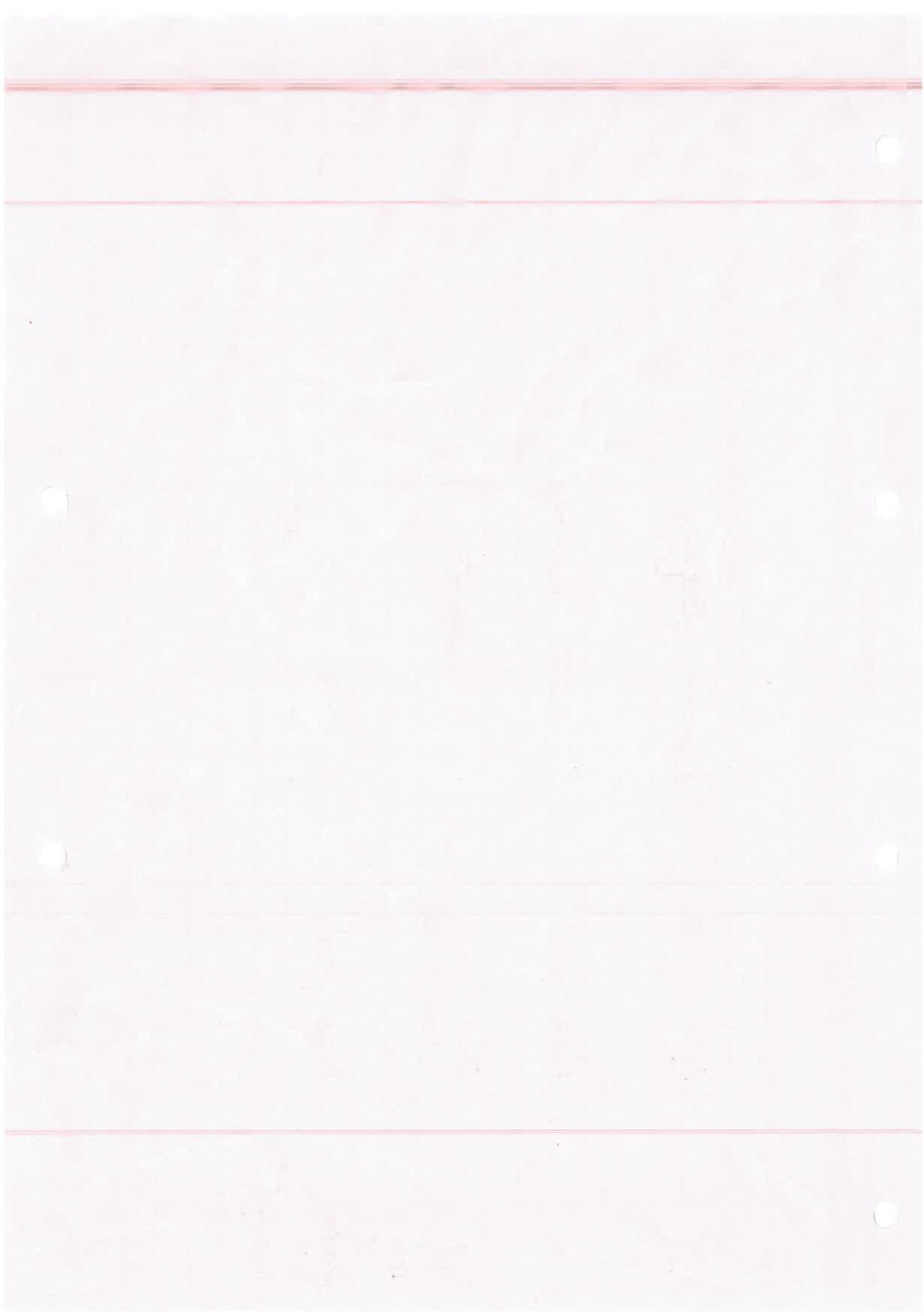
Comments:

Order Date

Customer Signature

X I have checked and agree with the above choices

Target. g Date



All sizes

Approx

Main Bed

Blind space Rese profile

3800

1500

curtain pair Bl0

3800 x 2500

1500 x 2500

plantation Shutter ASA

3800 x 2400

TTT 1400

centre 4H ~~63mm~~ 63mm 18 OD

Tier on Tier / TOP on TOP Track

Both in linged

plantation ASA

centre 4H 63 1/2 3 UD LR 1500 x 2500

TT 1400

ensuite

plantation JAWA 63mm + 2 LR or RR

wid rail 1400

L-60

900 w x 2400

AMM

Blind space Rese 2300

Single curtain Uoka 2300 x 2500

Bed 2

~~1800~~ 2300 x 2500 (AS WASH)

plantation

1800 x 2400 1/2 OD 3 LR

Bed 3

AM AS Bed 2 plantation & curtain & Rese profile

2300 x 2500 + 1300 x 2500

950 x 2500 ON 3 LR

Superseded



CP INTERIORS

Harvey Mitchell
 Mitchell Building Contractors
 Unit 1A
 St Peters Technical Park
 La Grande Route De St Pierre
 St Peter
 JES 7ZN

Date	Reference	Your Contact
12-12-2023	SO15253Q1	Rachel
Customer Ref.		
Wishing Well, Living Room Motorised Roller Option		

Quote

Our Price Promise to you
 We are so confident our pricing is competitive, that we will beat any written quotation for equivalent product by 5%

Supply & Fit/Supply Only

Location	Description	QTY	Price
Living Room - Motorised Option	Supply & Fit - Roller blind, in a Solatex Alu 3% silver back mesh fabric, colour to be confirmed. Operated with a hardwired Somfy Sonnesse 40 RTS motor and silug 5 remote control	11	£ 8,282.00
Living Room	Supply & Fit - Curtain Making, 80/160mm Wave voile with 75mm bottom hem and lead weight	5	£ 2,261.00
Living Room	Supply only - Fabric, 35m fabric for all voiles, based on Warwick Skialthos FR White, wide width as guide @ £40 per/m.	1	£ 1,400.00
Living Room	Supply & Fit - Curtain Pole / Track, SG6870 Silent gliss manual track in white with wave gliders. Top fixed into reese profile	5	£ 3,287.00
Master Bedroom	Supply & Fit - Roller blind, in a blackout fabric (band c) colour to be confirmed. Operated with a hardwired Somfy Sonnesse 40 RTS motor and silug-5 remote control	2	£ 1,413.00
Master Bedroom	Supply & Fit - Curtain Making, 80/160mm Wave voile with 75mm bottom hem and lead weight	2	£ 864.00
Master Bedroom	Supply & Fit - Curtain Pole / Track, SG6870 Silent gliss manual track in white with wave gliders. Top fixed into reese profile	2	£ 1,888.00
Master Bedroom	Supply only - Fabric, 13m fabric for all voiles, based on Warwick Skialthos FR White, wide width as guide @ £40 per/m.	1	£ 520.00
Bedroom 2	Supply & Fit - Curtain Making, 80/160mm Wave voile with 75mm bottom hem and lead weight	1	£ 445.00
Bedroom 2	Supply & Fit - Curtain Pole / Track, SG6870 Silent gliss manual track in white with wave gliders. Top fixed into reese profile	1	£ 637.00
Bedroom 2	Supply only - Fabric, 7m fabric for all voiles, based on Warwick Skialthos FR White, wide width as guide @ £40 per/m.	1	£ 280.00
Bedroom 3	Supply & Fit - Curtain Making, 80/160mm Wave voile with 75mm bottom hem and lead weight	1	£ 445.00
Bedroom 3	Supply & Fit - Curtain Pole / Track, SG6870 Silent gliss manual track in white with wave gliders. Top fixed into reese profile	1	£ 637.00
Bedroom 3	Supply only - Fabric, 7m fabric for all voiles, based on Warwick Skialthos FR White, wide width as guide @ £40 per/m.	1	£ 280.00
	Supply & Fit - Curtain track recess profile filling brackets, TTSG1 Fixing bracket clips for all SG Curtain tracks in Reese profiles. Excludes electrical works.	97	£ 516.95

Terms : 40% deposit due with order, 40% on delivery & final 20% on completion

BACS Payment	Phone and Card Payment
Bank: NatWest Sort Code: 60 12 03 Account No: 66577772 Carpet Protection (C.I.) Ltd T/A CP Interiors	Payment can be made in person or by phone. If phone, please call us on 01534 768141 and have your card details ready. Note, we do not accept American Express or Cheque payments.

Subtotal :	£ 23,157.96
GST :	£ 1,157.90
Total :	£ 24,315.86

Please note: This quotation is only valid for acceptance for 14 days. Our estimate does not include any electrical work or additional carpentry work to install the above unless otherwise specified. Please note there is a handling charge on customer own fabric of £7.50 per metre. Due to high costs of labour, rescheduled visits or fitting appointments are charged on a time-billed basis. Settlement is due on completion of works and an administration charge of £25 will be added per visit if it is more than 30 days. We reserve the right to charge for design advice and liaison work carried out should an order not be placed. Goods remain the property of CP Interiors until full settlement is received. Should payment not be received we reserve the right to attend premises during working hours to remove goods and not be required to make good. Our full terms and conditions apply and are available on request.

PREMIERCHOICE

MANUFACTURERS OF QUALITY CUSTOM MADE CURTAINS, PELMETS AND BLINDS

CP INTERIORS JERSEY
CP INTERIORS
RUE DES PRES TRADING ESTATE
ST SAVIOUR
JERSEY
JE2 7QN

Re: 4219 / 1 - SO15242 MITCHELLS WISHING WELL

08 December 2023

Dear Customer,

THIS IS AN ESTIMATE ONLY. SHOULD YOU WISH TO PLACE AN ORDER KINDLY SEND A DETAILED WORKSHEET WHERE POSSIBLE USING THE PREMIER CHOICE ORDER FORM TO orders@premierchoice.co.uk

We thank you for your enquiry and we have the pleasure in estimating you as follows:

LIV ROOM VOILE 1

1 Voile Wave Railroaded		£	208.08
Rail size of 380cm, Drop of 250cm, Overall rail size: 380cm, 8.4 Mts in each			
Making:	8.3	Mts	
Fabric: Wide fabric - 300cm wide, no repeat	8.4	mts	

551

LIV ROOM VOILE 2

1 Voile Wave Railroaded		£	87.75
Rail size of 150cm, Drop of 250cm, Overall rail size: 150cm, 3.6 Mts in each			
Making:	3.5	Mts	
Fabric: Wide fabric - 300cm wide, no repeat	3.6	mts	

275

LIV ROOM VOILE 3

1 Voile Wave Railroaded		£	120.34
Rail size of 200cm, Drop of 250cm, Overall rail size: 200cm, 4.9 Mts in each			
Making:	4.8	Mts	
Fabric: Wide fabric - 300cm wide, no repeat	4.9	mts	

319

LIV ROOM VOILE 4

1 Voile Wave Railroaded		£	200.56
Rail size of 370cm, Drop of 250cm, Overall rail size: 370cm, 8.1 Mts in each			
Making:	8	Mts	
Fabric: Wide fabric - 300cm wide, no repeat	8.1	mts	

531

LIV ROOM VOILE 5

1 Voile Wave Railroaded		£	220.62
Rail size of 420cm, Drop of 250cm, Overall rail size: 420cm, 8.9 Mts in each			
Making:	8.8	Mts	
Fabric: Wide fabric - 300cm wide, no repeat	8.9	mts	

585

MASTER BED VOILE 1

1 Voile Wave Railroaded		£	70.20
Rail size of 120cm, Drop of 250cm, Overall rail size: 120cm, 2.9 Mts in each			
Making:	2.8	Mts	
Fabric: Wide fabric - 300cm wide, no repeat	2.9	mts	

226

MASTER BED VOILE 2

1 Voile Wave Railroaded		£	240.67	
Rail size of 440cm, Drop of 250cm, Overall rail size: 440cm, 9.7 Mts in each				
Making:	9.6	Mts		638
Fabric: Wide fabric - 300cm wide, no repeat	9.7	mts		

MASTER BED CURTAIN 1

1 Curtain Wave, Hand Finished Unlined		£	85.68	
Rail size of 120cm, Drop of 250cm, Overall rail size: 120cm, 2.5 Widths in each				
Making:	3	Widths		267
Fabric: 00cm pattern repeat	8.7	mts		

MASTER BED CURTAIN 2

1 Curtain Wave, Hand Finished Unlined		£	349.86	
Rail size of 440cm, Drop of 250cm, Overall rail size: 440cm, 7 Widths in each				
Making:	7	Widths		927
Fabric: 00cm pattern repeat	20.3	mts		

BED 2 VOILE

1 Voile Wave Railroaded		£	167.97	
Rail size of 310cm, Drop of 235cm, Overall rail size: 310cm, 6.8 Mts in each				
Making:	6.7	Mts		445
Fabric: Wide fabric - 300cm wide, no repeat	6.8	mts		

BED 2 CURTAIN

1 Curtain Wave, Hand Finished Unlined		£	178.50	
Rail size of 310cm, Drop of 235cm, Overall rail size: 310cm, 5 Widths in each				
Making:	5	Widths		473
Fabric: 00cm pattern repeat	13.8	mts		

BED 3 VOILE

1 Voile Wave Railroaded		£	167.97	
Rail size of 310cm, Drop of 235cm, Overall rail size: 310cm, 6.8 Mts in each				
Making:	6.7	Mts		445
Fabric: Wide fabric - 300cm wide, no repeat	6.8	mts		

BED 3 CURTAIN

1 Curtain Wave, Hand Finished Unlined		£	178.50	
Rail size of 310cm, Drop of 235cm, Overall rail size: 310cm, 5 Widths in each				
Making:	5	Widths		473
Fabric: 00cm pattern repeat	13.8	mts		

Others Subtotal: £ 2,276.70

Total: £ 2,276.70

Unit 6 and 7 Five Arches Business Est

off Maidstone Road

Sidcup

Kent

DA14 5AE

Tel: 020 8269 6400 Fax: 020 8269 6401

0265

Despatch Method: DHL Economy

Account Ref: CP5007

Cust Ref:

Order No: 3895814

Order Date: 07/12/2023

Cust Order No: MITCHELLS S015242

Vat No: 324 0532 02

Order To:
C.P Interiors 3
Rue Des Pres Trading Estate
St Saviour
Jersey
Channel Islands
JE2 7QN

Order To:
C.P Interiors 3
Rue Des Pres Trading Estate
St Saviour
Jersey
Channel Islands
JE2 7QN

Type	Colour	Width	Drop	Quantity	Unit Price	Disc %	Net
------	--------	-------	------	----------	------------	--------	-----

Roller	Panama Pro Chrome FR Black 11818 R/F (E)1200	2500	2500	1	321.56	51.92	154.61
32mm Roller Tube, Standard Brackets Req., Standard P.V.C. Bottom Rail - 5m - White, Right Hand Control, No White No. 10 Plastic Operating Chain (Double Bead), No Scallop, No Braid Required, N/A, No Pole, No Final, No Eyelets Required, No Pull Required, No Hold Down Clips Required, Standard Roll, No Specials, No Specials, Easybreak No. 10 Chain Connector - White, Not Applicable							
Measurement: Blind Size							
Location: Living Room							
Fitting Ins:							
Chain Length: 1600							

Roller	Panama Pro Chrome FR Black 11818 R/F (E)1000	2500	2500	2	272.89	51.92	262.41
32mm Roller Tube, Standard Brackets Req., Standard P.V.C. Bottom Rail - 5m - White, Right Hand Control, White, White No. 10 Plastic Operating Chain (Double Bead), No Scallop, No Braid Required, N/A, No Pole, No Final, No Eyelets Required, No Pull Required, No Hold Down Clips Required, Standard Roll, No Specials, No Specials, Easybreak No. 10 Chain Connector - White, Not Applicable							
Measurement: Blind Size							
Location: Living Room							
Fitting Ins:							
Chain Length: 1600							

Roller	Panama Pro Chrome FR Black 11818 R/F (E)1850	2500	2500	2	515.74	51.92	495.94
32mm Roller Tube, Standard Brackets Req., Standard P.V.C. Bottom Rail - 5m - White, Right Hand Control, White, White No. 10 Plastic Operating Chain (Double Bead), No Scallop, No Braid Required, N/A, No Pole, No Final, No Eyelets Required, No Pull Required, No Hold Down Clips Required, Standard Roll, No Specials, No Specials, Easybreak No. 10 Chain Connector - White, Not Applicable							
Measurement: Blind Size							
Location: Living Room							
Fitting Ins:							
Chain Length: 1600							

Roller	Panama Pro Chrome FR Black 11818 R/F (E)1800	2500	2500	2	467.33	51.92	449.38
32mm Roller Tube, Standard Brackets Req., Standard P.V.C. Bottom Rail - 5m - White, Right Hand Control, White, White No. 10 Plastic Operating Chain (Double Bead), No Scallop, No Braid Required, N/A, No Pole, No Final, No Eyelets Required, No Pull Required, No Hold Down Clips Required, Standard Roll, No Specials, No Specials, Easybreak No. 10 Chain Connector - White, Not Applicable							
Measurement: Blind Size							
Location: Living Room							
Fitting Ins:							
Chain Length: 1600							

Roller - Somfy Sonesse 40 RTS	Panama Pro Chrome FR Black 11818 R/F (E)1200	2500	2500	1	321.56	51.92	302.61
No Headbox Required, No Brackets Required, Sonesse 40 Motor 3/30 RTS, No Handset Required, No Hub Required, 55mm Roller Tube, Standard P.V.C. Bottom Rail - 5m - White, No Scallop, No Braid Required, No Pole, No Final, No Eyelets Required, Standard Roll, Blind is safe by design and requires no additional devices or warning labels							
Measurement: Blind Size							
Location: Living Room - MOTORIZED OPTION Fitting Ins:							

Roller - Somfy Sonesse 40 RTS	Panama Pro Chrome FR Black 11818 R/F (E)1000	2500	2500	2	272.89	51.92	558.41
No Headbox Required, No Brackets Required, Sonesse 40 Motor 3/30 RTS, No Handset Required, No Hub Required, 55mm Roller Tube, Standard P.V.C. Bottom Rail - 5m - White, No Scallop, No Braid Required, No Pole, No Final, No Eyelets Required, Standard Roll, Blind is safe by design and requires no additional devices or warning labels							
Measurement: Blind Size							
Location: Living Room - MOTORIZED OPTION Fitting Ins:							

Roller - Somfy Sonesse 40 RTS	Panama Pro Chrome FR Black 11818 R/F (E)950	2500	2500	4	272.89	51.92	1116.82
No Headbox Required, No Brackets Required, Sonesse 40 Motor 3/30 RTS, No Handset Required, No Hub Required, 55mm Roller Tube, Standard P.V.C. Bottom Rail - 5m - White, No Scallop, No Braid Required, No Pole, No Final, No Eyelets Required, Standard Roll, Blind is safe by design and requires no additional devices or warning labels							
Measurement: Blind Size							
Location: Living Room - MOTORIZED OPTION Fitting Ins:							

Roller - Somfy Sonesse 40 RTS 2500 4 272.89 51.92 1116.82

Location: Living Room - MOTORISED OPTION Fitting Ins:
 Measurement: Blind Size
 Eyelets Required, Standard Roll, Blind is safe by design and requires no additional devices or warning labels
 55mm Roller Tube, Standard P.V.C. Bottom Rail - 5m - White, No Scallop, No Braid Required, No Pole, No Final, No
 No Headbox Required, No Brackets Required, Sonesse 40 Motor 3/30 RTS, No Handset Required, No Hub Required,

2960

Blackout (c) fabnz

Roller - Somfy Sonesse 40 RTS 2500 2 369.88 51.92 651.68

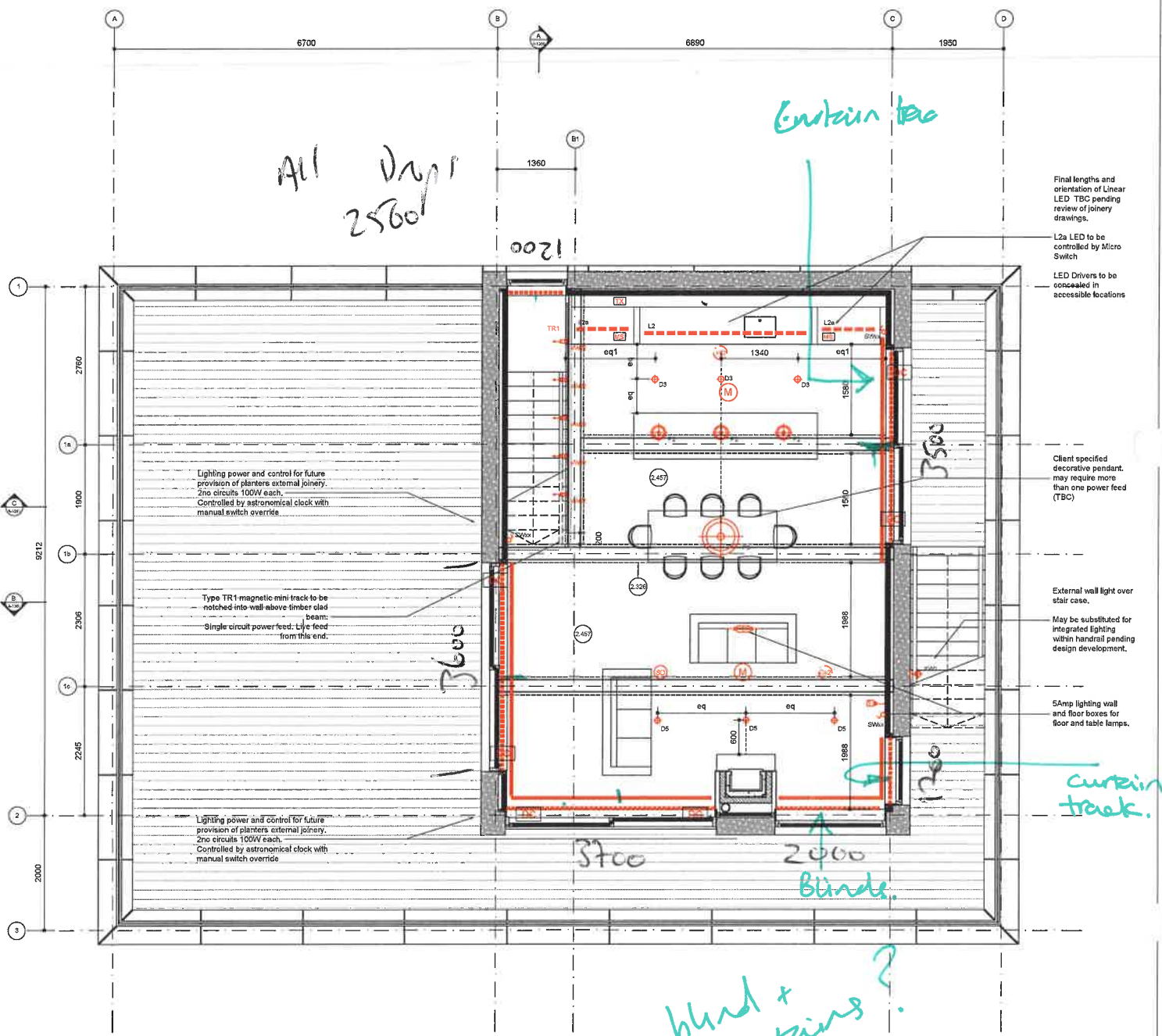
Location: MASTER BED Fitting Ins:
 Measurement: Blind Size
 Eyelets Required, Standard Roll, Blind is safe by design and requires no additional devices or warning labels
 55mm Roller Tube, Standard P.V.C. Bottom Rail - 5m - White, No Scallop, No Braid Required, No Pole, No Final, No
 No Headbox Required, No Brackets Required, Sonesse 40 Motor 3/30 RTS, No Handset Required, No Hub Required,

4228

553.07 TR

£1413

Net Total: 5108.68
 VAT: 0.00
 Total: 5108.68



PROPOSED FIRST FLOOR PLAN
SCALE 1:50 @ A1

SYMBOL KEY

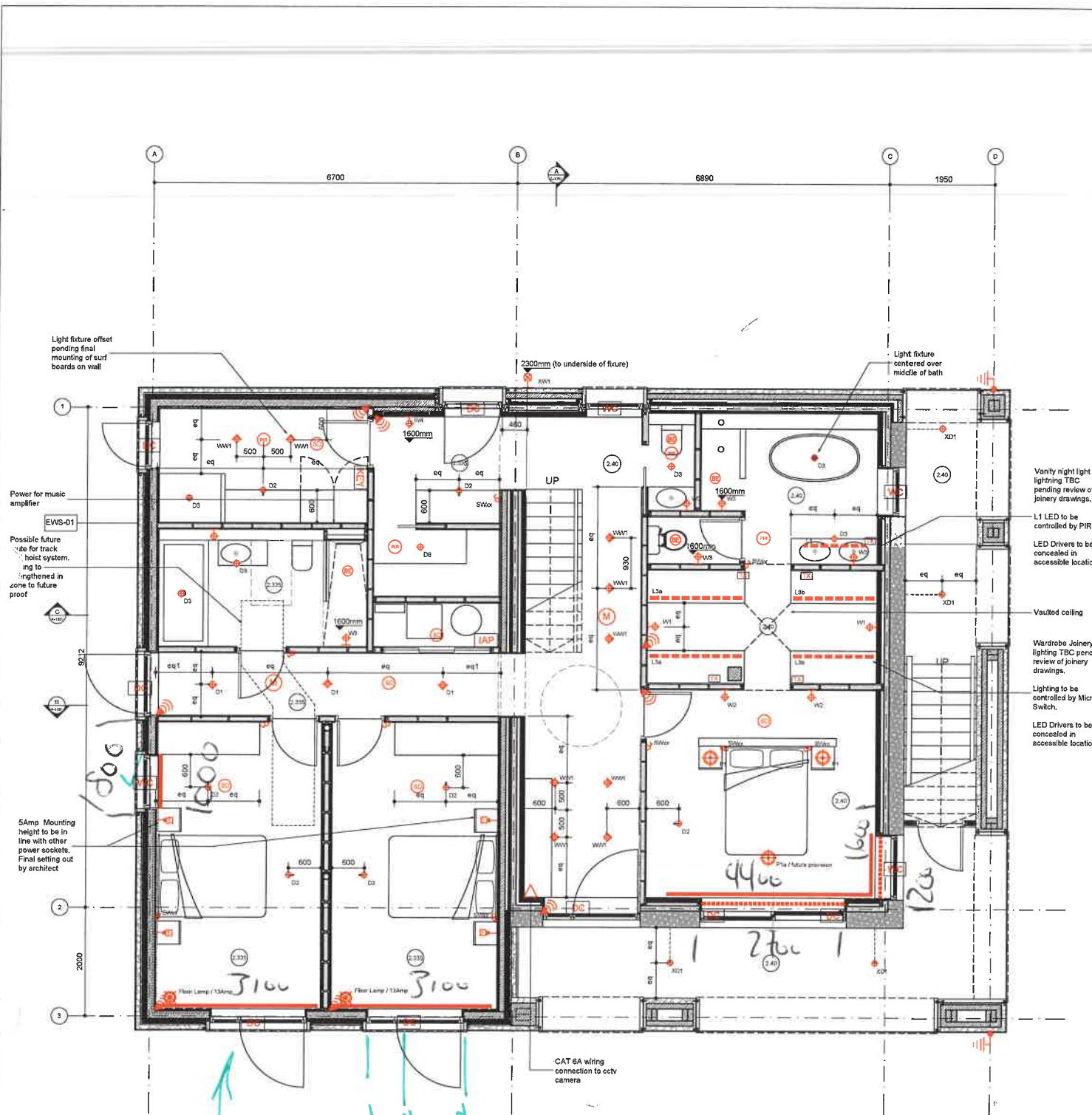
- Light Switch
- Pendant feature light
- Floor Lamp
- Deep recessed, timeless LED downlight
- Adjustable recessed, timeless LED downlight
- LED linear strip
- Wall Light
- External wall light
- 5A Lighting Skt Outlet
- Recessed blind (CUR-02)
- Bathroom extract
- Smoke Detector (Wired In)
- Extractor Fan
- Heat Detector
- Co2 Detector
- Recessed blind (CUR-01)
- Ceiling music speaker
- Passive Infrared sensor
- Symbol for remote power supply
- Micro switch to control lighting within cabinets
- Intruder alarm - door contact
- Intruder alarm - window contact
- Intruder alarm - menvier ion control unit
- Intruder alarm - key / fob pad
- Intruder alarm - corner mount pir motion detector
- Lightning protection earth pit

REFER TO M+E DRAWINGS AND LIGHTNING DESIGN FOR SPECIFICATION
ALL CEILING TO HAVE A CLAY FINISH ON BOTH FLOORS (LIN-02)

REV	DATE	NOTES
00	06.12.21	FOR INFORMATION
01	07.01.22	FOR INFORMATION
02	11.03.22	FOR INFORMATION
03	06.01.23	FOR CONSTRUCTION
04	09.06.23	FOR CONSTRUCTION

PROJECT TITLE
WISHING WELL, JERSEY

DRAWING TITLE PROPOSED GROUND FLOOR / FIRST FLOOR RCP PLAN	DRAWN FW
DRAWING NO. 20014_A_1120	CHECKED FW
	SCALE 1:50 @ A1
	REVISION 04



PROPOSED GROUND FLOOR PLAN
SCALE 1:50 @ A1

1500 + 2350 + 1500 + 2350

*curvains
boards
+ shutters.*

fieldwork

www.fieldworkarchitects.co.uk info@fieldworkarchitects.co.uk

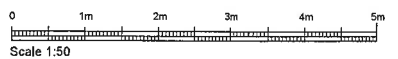
Do not scale from drawing.

The author of this drawing takes no responsibility for any dimensions obtained by measuring or scaling from this drawing and no reliance may be placed on such dimensions. If no dimension is given it is the responsibility of the recipient to ascertain the dimension specifically from the author or by site measurement.

The sizing of all structural and service elements must always be checked against the relevant engineer's drawings. No reliance should be placed upon sizing information shown on this drawing.

All areas are approximate and measured off preliminary drawings. They relate to the likely area of the building at the current state of the design and using the stated option either in accordance to client standards or the RICS Code of Measuring Practice, 6th Edition, RICS/ISVA. Any decisions to be made on the basis of these predictions, whether as to project viability, pre-letting, lease agreements or the like should include due allowances for the increases and decreases inherent in the design development and building process.

Report all drawing errors, omissions and discrepancies to the architect.





CP INTERIORS

Mr. Harvey Mitchell
 Mitchell Building Contractors
 Unit 1A
 St Peters Technical Park
 La Grande Route De St Pierre
 St Peter
 JE3 7ZN

Date	Reference	Your Contact
15-03-2024	SO15253	Rachel

Customer Ref.
Wishing Well, St Ouen

Quote

xx Blind boxes ordered as per this quote version.

Our Price Promise to you

We are so confident our pricing is competitive, that we will beat any written quotation for equivalent product by 5%

Supply & Fit/Supply Only

Solatex Alu Bage, wood colour.

Location	Description	QTY	Price
Living Room - Manual	Roller blind, in a Solatex Alu 3% silver back mesh fabric, colour to be confirmed. Manual operation with silver side chain	7	£ 4,205.00
Living Room - Motorised	Roller blind, in a Solatex Alu 3% silver back mesh fabric, colour to be confirmed. Motorised 240 vlt Somfy Sonesse 40 Motor including remote control	1	£ 878.00
Master Bedroom	Curtain Making, 80/160mm Wave Curtain, unlined with 75mm bottom hem	1	£ 657.00
Master Bedroom	Curtain Making, 80/160mm Wave Curtain, unlined with 75mm bottom hem	1	£ 328.00
Master Bedroom	Curtain Pole / Track, SG6970 Silent gliss manual track in white with wave gliders. Top fixed into reese profile	2	£ 1,888.00
Master Bedroom	Fabric, 16m wide width fabric for both curtains, based on Solunar 05 Greige wide width dimout @ £75 p/m,	1	£ 1,200.00
Master Bedroom	Plantation Shutter, Premium Cuba hardwood shutter panels, full height multi fold with 63mm louvres and centre tilt mechanism, includes top and bottom tracks. Finished in pure white, including plain frames and trims to cover uneven windows where required. Hinges in stainless steel (TBC). 8 Panels, LLLLLRRR ** Please note, we are still working on this configuration, at the moment Tier on Tier is not suitable so have quoted based on full height multifold **	1	£ 3,722.00
Master Bedroom	Plantation Shutter, Premium Cuba hardwood shutter panels, tier on tier with 63mm louvres and centre tilt mechanism. Finished in pure white, including plain frames and trims to cover uneven windows where required. Hinges in stainless steel (TBC). 3 Panels, LLR	1	£ 1,396.00
En Suite	Plantation Shutter, Premium JAVA Abs waterproof shutter panels, full height with 63mm louvres and centre tilt mechanism. Finished in pure white, including plain frames and trims to cover uneven windows where required. Hinges in stainless steel (TBC). 2 Panels, LL or RR (TBC)	1	£ 1,396.00
Hall	Curtain Making, 80/160mm Wave voile with 75mm bottom hem and lead weight	1	£ 387.00
Hall	Curtain Pole / Track, SG6970 Silent gliss manual track in white with wave gliders. Top fixed into reese profile	1	£ 572.00
Hall	Fabric, 5.5m wide fabric, based on Warwick Skiathos FR White, wide width as guide @ £40 per/m,	1	£ 220.00
Bedroom 2	Curtain Making, 80/160mm Wave voile with 75mm bottom hem and lead weight	1	£ 387.00
Bedroom 2	Curtain Pole / Track, SG6970 Silent gliss manual track in white with wave gliders. Top fixed into reese profile	1	£ 572.00
Bedroom 2	Fabric, 5.5m wide fabric, based on Warwick Skiathos FR White, wide width as guide @ £40 per/m,	1	£ 220.00
Bedroom 2	Plantation Shutter, Premium Cuba hardwood shutter panels, tier on tier with 63mm louvres and centre tilt mechanism. Finished in pure white, including plain frames and trims to cover uneven windows where required. Hinges in stainless steel (TBC). 3 Panels, LLR	1	£ 1,601.00
Bedroom 3	Curtain Making, 80/160mm Wave voile with 75mm bottom hem and lead weight	1	£ 387.00
Bedroom 3	Curtain Pole / Track, SG6970 Silent gliss manual track in white with wave gliders. Top fixed into reese profile	1	£ 572.00
Bedroom 3	Curtain Making, 80/160mm Wave voile with 75mm bottom hem and lead weight	1	£ 267.00

this needs to be looked at if/when it goes to order as not possible tier on tier on tracks as Adrians pink.

Bedroom 3	Curtain Pole / Track, SG6970 Silent gliss manual track in white with wave gliders. Top fixed into reese profile	1	£ 364.00
Bedroom 3	Fabric, 9m wide fabric, based on Warwick Skiathos FR White, wide width as guide @ £40 per/m,	1	£ 360.00
Bedroom 3	Plantation Shutter, Premium Cuba hardwood shutter panels, tier on tier with 63mm louvres and centre tilt mechanism. Finished in pure white, including plain frames and trims to cover uneven windows where required. Hinges in stainless steel (TBC). 3 Panels, LLR	1	£ 1,601.00
Bedroom 3	Plantation Shutter, Premium Cuba hardwood shutter panels, tier on tier with 63mm louvres and centre tilt mechanism. Finished in pure white, including plain frames and trims to cover uneven windows where required. Hinges in stainless steel (TBC). 3 Panels, LLR	1	£ 862.00
	Curtain track recess profile fitting brackets, TTSG1 Fixing bracket clips for all SG Curtain tracks in Reese profiles, . Excludes electrical works, For the Plantation Shutters, delivery is approximately 10-12 weeks from the time of placing your order. An airfreight service is available to you at an extra cost reducing the delivery time to an average of 5 to 6 weeks. An accurate costing may be given on request.	50	£ 267.50

Terms : 40% deposit due with order, 40% on delivery & final 20% on completion

BACS Payment	
Bank:	NatWest
Sort Code:	60 12 03
Account No:	66577772
Carpet Protection (C.I) Ltd T/A CP Interiors	

Phone and Card Payment	
Payment can be made in person or by phone. If phone, please call us on 01534 768141 and have your card details ready.	
Note, we do not accept American Express or Cheque payments.	

Subtotal :	£ 24,309.50
GST :	£ 1,215.48
Total :	£ 25,524.98

Please note: This quotation is only valid for acceptance for 14 days. Our estimate does not include any electrical work or additional carpentry work to install the above unless otherwise specified. Please note there is a handling charge on customer own fabric of £7.50 per metre. Due to high costs of labour, pre-arranged missed fitting appointments will be charged on a time-wasted basis. Settlement is due on completion of works and an administration charge of £25 will be added per month if unpaid within 30 days. We reserve the right to charge for design, advice and liaison work carried out should an order not be placed. Goods remain the property of CP Interiors until full settlement is received. Should payment not be received we reserve the right to attend premises during working hours to remove goods and not be required to make good. Our full terms and conditions apply and are available on request.

Work Diary

Staff Name Adrian **Measurer or Fitter** EM Interiors, emily@eminteriors.ie **Contact Address** One St Brelede Apt 7 **Customer Ref** **Date** 11-01-2024 **Time** 14:30
Order No SO15305 **Measurer**

wishing well

wishing well

Notes :

Location	Supplier	Blind Type /Description	Colour	Qty	Width	Drop	Fitting Height	Blind/Recess	Controls	Brackets	Surface	Unit Price
LN		B/S box		1	3500							
"		100 x 100		1	2000	= 6m						
				1	1300							
				1	3800							
				1	1800							
				1	1200							
		rollers Mon Sene		2	1600	2500		A				
				1	1200							
				1	2000							
				2	1900	u						
				1	1800							
		# 2400 Bleche		1	1200							

Comments: # JUST THIS ONE

Order Date

Customer Signature
 I have checked and agree with the above choices

Target Fitting Date

Main bed

B/Spr Reese
Purple ~~4000~~ 3800
1500

curtain pair 8/0 3800 x 2500
1500 x 2500

plantation Sultan 1200 x 2400

3800 x 2400

ensuite

plantation
Grou 76/88
curtain hit

900 x 2400 and 1 R

WGM

B/Spr Reese 2300
Single Chair 2300 x 2500

Bed 2 plantation 1800 x 2400 and 5 UK

USA

B/S Reese Purple 2300 x 2500

Bed 3

pair curtain 2300

AS Above

plus sitolku + curtain 950 x 2500 / 1300 Reese



CP INTERIORS

Harvey Mitchell
 Mitchell Building Contractors
 Unit 1A
 St Peters Technical Park
 La Grande Route De St Pierre
 St Peter
 JE3 7ZN

Date	Reference	Your Contact
18-01-2024	SO15253	Rachel

Customer Ref.
Wishing Well, St Ouen

Quote

Our Price Promise to you

We are so confident our pricing is competitive, that we will beat any written quotation for equivalent product by 5%

Supply & Fit/Supply Only

Location	Description	QTY	Price
Living Room - Manual	Supply & Fit- Roller blind, in a Solatex Alu 3% silver back mesh fabric, colour to be confirmed. Manual operation with silver side chain	7	£ 4,205.00
Living Room - Motorised	Supply & Fit- Roller blind, in a Solatex Alu 3% silver back mesh fabric, colour to be confirmed. Motorised 240 vlt Somfy Sonesse 40 Motor including remote control	1	£ 878.00
Master Bedroom	Supply & Fit- Curtain Making, 80/160mm Wave Curtain, unlined with 75mm bottom hem	1	£ 657.00
Master Bedroom	Supply & Fit- Curtain Making, 80/160mm Wave Curtain, unlined with 75mm bottom hem	1	£ 328.00
Master Bedroom	Supply & Fit- Curtain Pole / Track, SG6970 Silent gliss manual track in white with wave gliders. Top fixed into reese profile	2	£ 1,888.00
Master Bedroom	Supply only- Fabric, 16m wide width fabric for both curtains, based on Solunar 05 Greige wide width dimout @ £75 p/m,	1	£ 1,200.00
Master Bedroom	Supply & Fit- Plantation Shutter, Premium Cuba hardwood shutter panels, tier on tier with 63mm louvres and centre tilt mechanism. Finished in pure white, including plain frames and trims to cover uneven windows where required. Hinges in stainless steel (TBC). 8 Panels, LLLLLRRR	1	£ 3,315.00
Master Bedroom	Supply & Fit- Plantation Shutter, Premium Cuba hardwood shutter panels, tier on tier with 63mm louvres and centre tilt mechanism. Finished in pure white, including plain frames and trims to cover uneven windows where required. Hinges in stainless steel (TBC). 3 Panels, LLR	1	£ 1,396.00
En Suite	Supply & Fit- Plantation Shutter, Premium JAVA Abs waterproof shutter panels, full height with 63mm louvres and centre tilt mechanism. Finished in pure white, including plain frames and trims to cover uneven windows where required. Hinges in stainless steel (TBC). 2 Panels, LL or RR (TBC)	1	£ 1,396.00
Hall	Supply & Fit- Curtain Making, 80/160mm Wave voile with 75mm bottom hem and lead weight	1	£ 387.00
Hall	Supply & Fit- Curtain Pole / Track, SG6970 Silent gliss manual track in white with wave gliders. Top fixed into reese profile	1	£ 572.00
Hall	Supply only- Fabric, 5.5m wide fabric, based on Warwick Skiathos FR White, wide width as guide @ £40 per/m,	1	£ 220.00
Bedroom 2	Supply & Fit- Curtain Making, 80/160mm Wave voile with 75mm bottom hem and lead weight	1	£ 387.00
Bedroom 2	Supply & Fit- Curtain Pole / Track, SG6970 Silent gliss manual track in white with wave gliders. Top fixed into reese profile	1	£ 572.00
Bedroom 2	Supply only- Fabric, 5.5m wide fabric, based on Warwick Skiathos FR White, wide width as guide @ £40 per/m,	1	£ 220.00
Bedroom 2	Supply & Fit- Plantation Shutter, Premium Cuba hardwood shutter panels, tier on tier with 63mm louvres and centre tilt mechanism. Finished in pure white, including plain frames and trims to cover uneven windows where required. Hinges in stainless steel (TBC). 3 Panels, LLR	1	£ 1,601.00
Bedroom 3	Supply & Fit- Curtain Making, 80/160mm Wave voile with 75mm bottom hem and lead weight	1	£ 387.00
Bedroom 3	Supply & Fit- Curtain Pole / Track, SG6970 Silent gliss manual track in white with wave gliders. Top fixed into reese profile	1	£ 572.00
Bedroom 3	Supply & Fit- Curtain Making, 80/160mm Wave voile with 75mm bottom hem and lead weight	1	£ 267.00

FULL HEIGHT MULTI FOLD - TEMP COST AS CANNOT HAVE OTHER CONFIG & TO REVISIT.

3722

Bedroom 3	Supply & Fit- Curtain Pole / Track, SG6970 Silent gliss manual track in white with wave gliders. Top fixed into reese profile	1	£ 364.00
Bedroom 3	Supply only- Fabric, 9m wide fabric, based on Warwick Skiathos FR White, wide width as guide @ £40 per/m,	1	£ 360.00
Bedroom 3	Supply & Fit- Plantation Shutter, Premium Cuba hardwood shutter panels, tier on tier with 63mm louvres and centre tilt mechanism. Finished in pure white, including plain frames and trims to cover uneven windows where required. Hinges in stainless steel (TBC). 3 Panels, LLR	1	£ 1,601.00
Bedroom 3	Supply & Fit- Plantation Shutter, Premium Cuba hardwood shutter panels, tier on tier with 63mm louvres and centre tilt mechanism. Finished in pure white, including plain frames and trims to cover uneven windows where required. Hinges in stainless steel (TBC). 3 Panels, LLR	1	£ 862.00
	Supply & Fit- Curtain track recess profile fitting brackets, TTSG1 Fixing bracket clips for all SG Curtain tracks in Reese profiles, . Excludes electrical works, For the Plantation Shutters, delivery is approximately 10-12 weeks from the time of placing your order. An airfreight service is available to you at an extra cost reducing the delivery time to an average of 5 to 6 weeks. An accurate costing may be given on request.	50	£ 267.50

Terms : 40% deposit due with order, 40% on delivery & final 20% on completion

BACS Payment	
Bank:	NatWest
Sort Code:	60 12 03
Account No:	66577772
Carpet Protection (C.I) Ltd T/A CP Interiors	

Phone and Card Payment
Payment can be made in person or by phone. If phone, please call us on 01534 768141 and have your card details ready. Note, we do not accept American Express or Cheque payments.

Subtotal :	£ 23,902.50
GST :	£ 1,195.13
Total :	£ 25,097.63

Please note: This quotation is only valid for acceptance for 14 days. Our estimate does not include any electrical work or additional carpentry work to install the above unless otherwise specified. Please note there is a handling charge on customer own fabric of £7.50 per metre. Due to high costs of labour, pre-arranged missed fitting appointments will be charged on a time-wasted basis. Settlement is due on completion of works and an administration charge of £25 will be added per month if unpaid within 30 days. We reserve the right to charge for design, advice and liaison work carried out should an order not be placed. Goods remain the property of CP Interiors until full settlement is received. Should payment not be received we reserve the right to attend premises during working hours to remove goods and not be required to make good. Our full terms and conditions apply and are available on request.



CP INTERIORS

Harvey Mitchell
 Mitchell Building Contractors
 Unit 1A
 St Peters Technical Park
 La Grande Route De St Pierre
 St Peter
 JE3 7ZN

Date	Reference	Your Contact
18-01-2024	SO15242	Rachel

Customer Ref.

Wishing Well, St Ouen, Recess Profiles
--

Quote

Our Price Promise to you
 We are so confident our pricing is competitive, that we will beat any written quotation for equivalent product by 5%

Supply & Fit/Supply Only

Location	Description	QTY	Price
Living Room	Supply only- Recess Boxing / Profiles, S100 X S100 boxing supplied in 3 no. 6m lengths,	3	£ 3,192.84
Living Room	Supply only- Recess profile end pieces, S100 X S100 12no. End Caps (cost to be reviewed if more required),	12	£ 270.72
Master Bed, Hall, Bed 2, Bed 3	Supply only- Recess Boxing / Profiles, TT1F Tracktrim with screw channel supplied in 2 no. 6m lengths,	2	£ 985.44
Master Bed, Hall, Bed 2, Bed 3	Supply only- Recess Boxing / Profiles, TT1F Tracktrim with screw channel supplied in 1 cut length of 4m,	1	£ 394.17
Master Bed, Hall, Bed 2, Bed 3	Supply only- Recess profile end pieces, TTFE35F 10 no. Flat end caps with flange for manual curtain tracks (cost to be reviewed if more required or motorised tracks instead of manual),	10	£ 295.37

Terms : 40% deposit due with order, 40% on delivery & final 20% on completion

BACS Payment	
Bank:	NatWest
Sort Code:	60 12 03
Account No:	66577772
Carpet Protection (C.I) Ltd T/A CP Interiors	

Phone and Card Payment
Payment can be made in person or by phone. If phone, please call us on 01534 768141 and have your card details ready. Note, we do not accept American Express or Cheque payments.

Subtotal :	£ 5,138.54
GST :	£ 256.93
Total :	£ 5,395.47

Please note: This quotation is only valid for acceptance for 14 days. Our estimate does not include any electrical work or additional carpentry work to install the above unless otherwise specified. Please note there is a handling charge on customer own fabric of £7.50 per metre. Due to high costs of labour, pre-arranged missed fitting appointments will be charged on a time-wasted basis. Settlement is due on completion of works and an administration charge of £25 will be added per month if unpaid within 30 days. We reserve the right to charge for design, advice and liaison work carried out should an order not be placed. Goods remain the property of CP Interiors until full settlement is received. Should payment not be received we reserve the right to attend premises during working hours to remove goods and not be required to make good. Our full terms and conditions apply and are available on request.

PREMIERCHOICE

MANUFACTURERS OF QUALITY CUSTOM MADE CURTAINS, PELMETS AND BLINDS

Solmar 37.40/mt
TR ex vat

Starlight 27 plm
ex vat

FR ONE DIMOUT
PRICES.

CP INTERIORS JERSEY
CP INTERIORS
RUE DES PRES TRADING ESTATE
ST SAVIOUR
JERSEY
JE2 7QN

Re: 4516 / 1 - SO15253 MITCHELLS WISHING WELL

17 January 2024

Dear Customer,

THIS IS AN ESTIMATE ONLY. SHOULD YOU WISH TO PLACE AN ORDER KINDLY SEND A DETAILED WORKSHEET WHERE POSSIBLE USING THE PREMIER CHOICE ORDER FORM TO orders@premierchoice.co.uk

We thank you for your enquiry and we have the pleasure in estimating you as follows:

MASTER BEDROOM

1 Pair of Curtains Wave, Hand Finished Unlined	£	247.92
Rail size of 380cm, Drop of 250cm, Overall rail size: 380cm, 3.5 Widths in each		
Making: 8 Widths		657
Fabric: 00cm pattern repeat 20.3 mts		

MASTER BEDROOM

1 Pair of Curtains Wave, Hand Finished Unlined	£	123.96
Rail size of 150cm, Drop of 250cm, Overall rail size: 150cm, 1.5 Widths in each		
Making: 4 Widths		328
Fabric: 00cm pattern repeat 8.7 mts		

HALLWAY

1 Voile Wave Railroaded	£	146.17
Rail size of 230cm, Drop of 250cm, Overall rail size: 230cm, 5.4 Mts in each		
Making: 5.3 Mts		383
Fabric: Wide fabric - 300cm wide, no repeat 5.4 mts		

BED 2

1 Voile Wave Railroaded	£	146.17
Rail size of 230cm, Drop of 250cm, Overall rail size: 230cm, 5.4 Mts in each		
Making: 5.3 Mts		387
Fabric: Wide fabric - 300cm wide, no repeat 5.4 mts		

BED 3

1 Voile Wave Railroaded	£	146.17
Rail size of 230cm, Drop of 250cm, Overall rail size: 230cm, 5.4 Mts in each		
Making: 5.3 Mts		387
Fabric: Wide fabric - 300cm wide, no repeat 5.4 mts		

BED 3

1 Voile Wave Railroaded	£	85.50
Rail size of 130cm, Drop of 250cm, Overall rail size: 130cm, 3.2 Mts in each		
Making: 3.1 Mts		267
Fabric: Wide fabric - 300cm wide, no repeat 3.2 mts		

Others Subtotal:	£	895.89
-------------------------	----------	---------------

Total:	£	895.89
---------------	----------	---------------

Any additional work/material, not mentioned in the above estimate, will be invoiced for. Please note all Velvet fabrics are subject to 10% surcharge as per price list.

THIS IS AN ESTIMATE ONLY.

SHOULD YOU WISH TO PLACE AN ORDER KINDLY SEND A DETAILED WORKSHEET WHERE POSSIBLE USING THE PREMIERCHOICE ORDER FORM.

ALL EMAILED ORDERS PLEASE EMAIL TO ORDERS@PREMIERCHOICE.CO.UK
PLEASE QUOTE ESTIMATE NUMBER SUPPLIED.

Lead Times are subject to availability.

Assuring you of our best attention at all times.

E. & O.E

Yours Faithfully
SallyWaddilove
Premierchoice Ltd