

Customer Address

CP Interiors
 Rue Des Pres Trading Estate
 St Saviour
 JE2 7QN
 United Kingdom
 01534768141
 info@cpinteriors.je

SONA SHADES LTD

Unit 496, Holly Place
 Walton Summit Centre
 Preston
 Lancashire
 PR5 8AX
 United Kingdom
 info@sonashades.com
 01772 288 200

Invoice Number	INV-7789	Invoice Date	13-10-2025
Order Ref	ORDER/4955	Due Date	13-10-2025
Customer Ref	Patel S017072		
Alternative Address			
Supply Option	Supply Only		

Product	Quantity	Price	Total
1870404 - Situo 1-Channel RTS	1.00	£28.00	£28.00
9018624 - 240cm Motor Extension Cable	1.00	£3.00	£3.00
9018624 - 240cm Motor Extension Cable	1.00	£3.00	£3.00
SonaApex - Motorised Shape	1.00	£804.00	£804.00

Room Reference: LHS Apex Flat Top

Frame Type: No Frame
 Size: 2115w x 1470d
 Rail Colour: White 9016 ✓
 Fabric Type: SONA Blackout ✓
 Fabric Colour: Tusk ✓
 Bracket Colour: White 9016
 Bracket Type: Top Fix ✓
 Motor System: Tilt & Lift 25 RTS 12v
 Power Supply: SNA-75-12 ✓
 Mains Transformer
 Handset Type: Situo 1-Channel RTS ✓
 Handset Channel: Channel 1

*Tamara checked
 13/10/25*

SonaApex - Motorised Shape	1.00	£804.00	£804.00
Room Reference: RHS Apex Flat Top			
Frame Type: No Frame			
Size: 2120w x 1470d			
Rail Colour: White 9016			
Fabric Type: SONA Blackout			
Fabric Colour: Tusk			
Bracket Colour: White 9016			
Bracket Type: Top Fix			
Motor System: Tilt & Lift 25 RTS 12v			
Handset Channel: Channel 1			

SNA-75-12 - SNA-75-12	1.00	£48.00	£48.00
Mains Transformer			

Carriage	1.00	£125.00	£125.00
----------	------	---------	---------

Subtotal: £1,815.00

Tax: £363.00

Total (GBP): £2,178.00

PAYING IN DETAILS:

Bank: Natwest

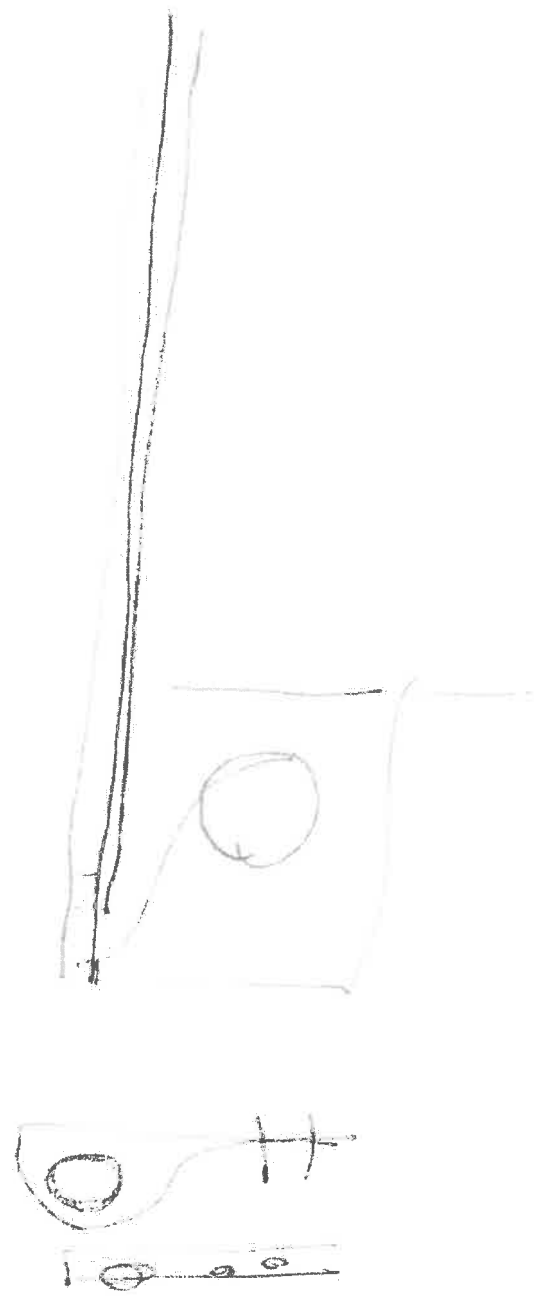
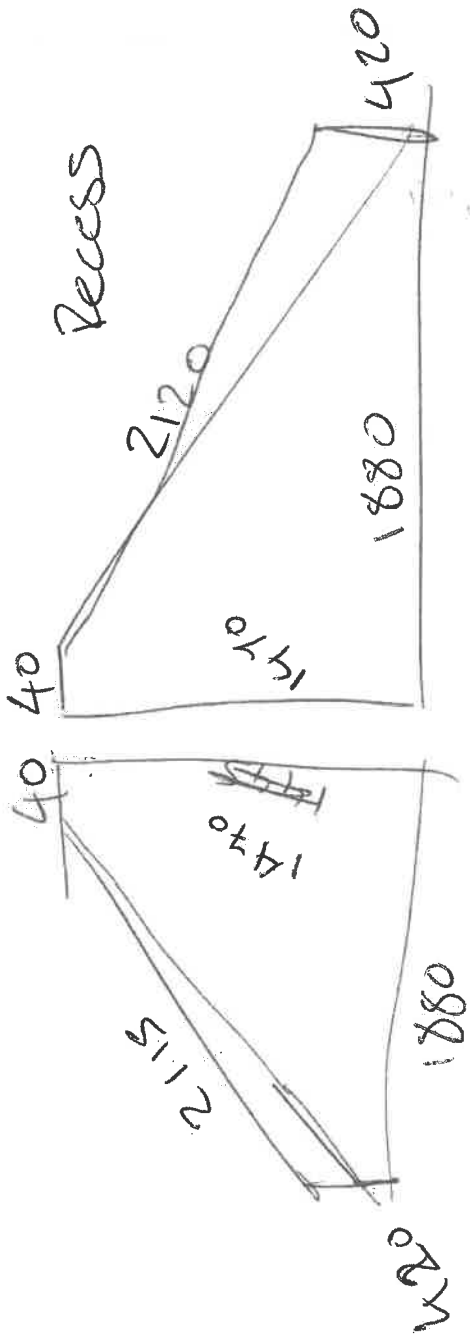
Acc: 78000661

Sort: 51-61-11

BIC: NWBKGB2L

IBAN: GB21 NWBK 5161 1178 0006 61

Please Note: The Invoice Number is required as a reference for any payments. Any order discrepancies must be notified in writing within 48 hours. Late claims will not be accepted. Terms & Conditions will apply. Goods remain the property of SONA SHADES LTD until paid for in full.



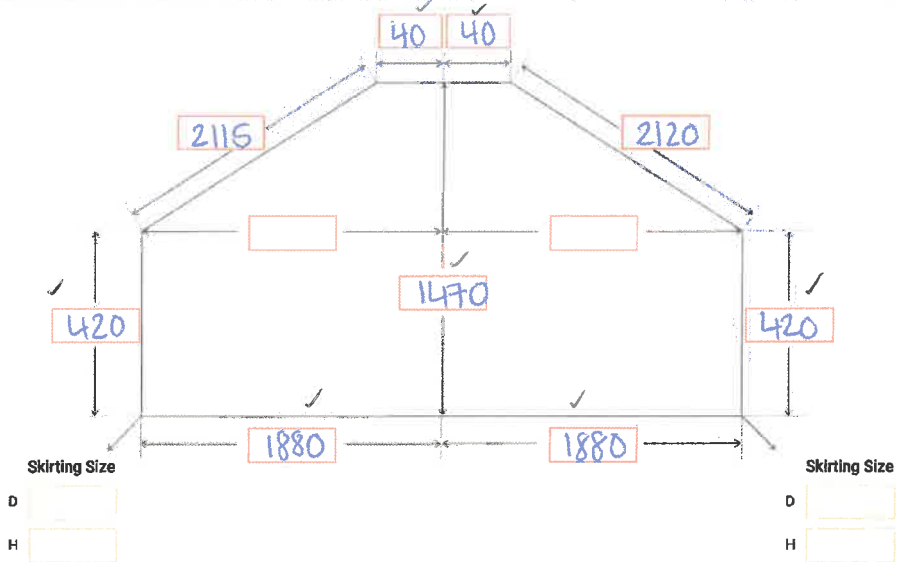
Measuring Sheet

SonaApex S2 Motorised Shaped Blind



Project Ref: PATEL S017031 Room Ref: MASTER BED

Notes:



* PLEASE PROVIDE MEASUREMENTS IN MM

Please provide a clear image of the window.
 We are able to check your measurement whilst you are on site using our bespoke software. This may save you a re-visit. Please contact the office on 01772 288 200.

1. SIZE TYPE PROVIDED

- Blind Size
 - Recess Size*
- * If Recess Sizes are provided we will deduct 10mm from the shortest widths given

2. FRAME OPTION

- Perfect Fit International*
- * Standard finish is in White

3. HARDWARE COLOUR

- White
 - Anthracite Grey
 - Black
 - Bespoke RAL *
- *Please note, extra charges will apply.

4. BRACKETS

- Top
 - Face
- Perfect Fit International

5. FABRIC OPTIONS

- WARP BLENDE**
- SONA
 - Other
- FABRIC TYPE & COLOUR**
- Blackout
 - Dimout
- Colour: TUSK
- TYPE OF TARDDEST FABRI**
- Yes*
- *Please note, extra charges will apply

6. REMOTE TYPE

- Situ 1 (1 Channel Handset)
 - Situ 5 (5 Channel Handset)
 - Telis 16 (16 Channel Handset)
 - Smooove Origin (1 Channel Wall Switch)
 - Smooove Origin 4 (4 Channel Wall Switch)
- CHANNEL NUMBER**
- Channel No:

QTY

NO.

7. POWER SUPPLY

- WIRE FREE**
- Battery (Li-ion)*
 - Solar Pack (Panel & Li-on Battery)
- *Battery Charger Required.
- MAINS PLUG IN**
- 12v Plug-in Adapter (Powers > 1 Blind)
- MAINS HARDWIRED TRANSFORMER**
- SNA-45-12 (Powers > 1 Blind)
 - SNA-75-12 (Powers > 3 Blinds)
 - SNA-100-12 (Powers > 4 Blinds)
 - SNA12150 (Powers > 6 Blinds)

8. ACCESSORIES

- Tahoma Switch (Smart-Hub)
- Motor Extension Cable (240cm)
- Solar Panel Extension Cable (240cm)
- Battery Charger Extension Cable (240cm)
- Battery Charger (Li-on)

Top