

Hi Rachel,

You can achieve this with a twin system at 2200mm width x 3100mm draw (therefore 2no systems at 2200x1550).

Although this is smaller than the twin systems on the price list, I have applied the same pricing to it, as follows:

- 1no Twin T660 system 2200mm x 3100mm (2no individual systems at 2200x1550): £2910
- Packing/Delivery: £225

This includes SOMFY motors, standard white aluminium hardware, and standard screen fabric.

Hope that helps.

Kind regards,

SAM TAYLOR

Internal Sales Consultant

T: [+44 \(0\)1926 310 850](tel:+44(0)1926310850)

M: [+44 \(0\)7394 564 739](tel:+44(0)7394564739)

www.guthriedouglas.com



From: Rachel Baugh <rachel@cpinteriors.ie>

Sent: 19 August 2025 09:55

To: Sales | Guthrie Douglas <Sales@guthriedouglas.com>; Sam Taylor <sam.taylor@guthriedouglas.com>

Subject: PATEL

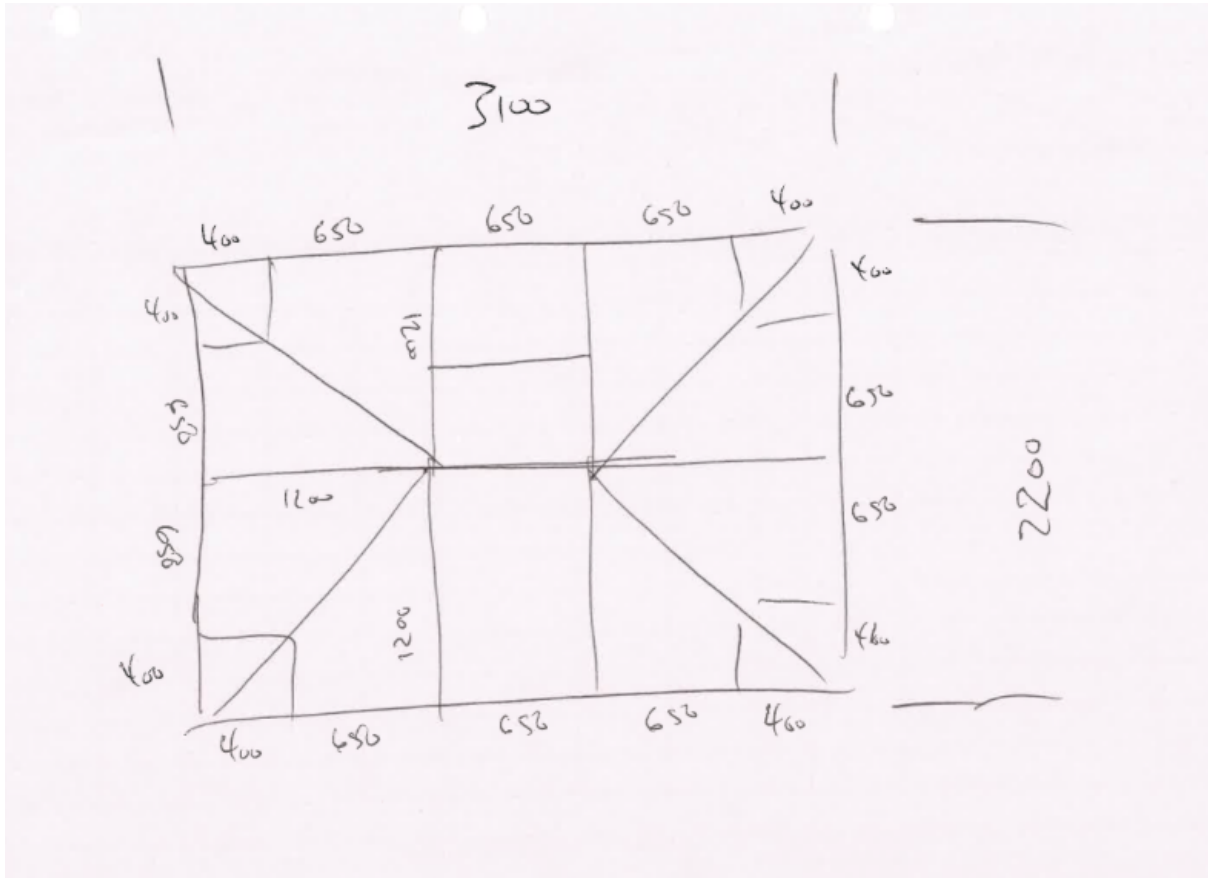
Good morning,

I have been looking on your pricelist how to quote the attached roof lantern which needs to be a twin system due to a light pendant cable.

3100 x 2200, somfy electric in an opaque fabric (not blackout).

Please could you advise as the sizes on your price list do not work with this configuration.

Look forward to hearing from you, thank you.



Kind Regards

Rachel
Baugh

Interior Design Advisor
rachel@cpinteriors.je



Unit 28 Rue Des Pres Trading Estate
St Saviour
Jersey
JE2 7QN
01534 768141 | www.cpinteriors.je
Instagram Facebook



With our CP Price promise, we will beat any quote by 5% **
** On like for like products only

This email has been scanned for spam & viruses. If you believe this email should have been stopped by our filters, [click here](#) to report it.

