

MINUTES/ACTION LIST

Sub-Contractor Meeting – CP interiors (Brise Soleil)

17 July 2025 at 3.00pm

Project: Makai, La Route de la Baie, St Brelade

Date of Meeting: Thursday 17 July 2025 at 3.00pm

Meeting Held at: Riva Architects

People Present:

Carlo Riva	(CR)	Riva Architects	(Riva)
Mark Lilley	(ML)	Riva Architects	
Adrian Colston-Weeks	(ACW)	CP interiors	

ITEMS DISCUSSED / ACTIONS

1. Brise Soleil

Photos of the Renson Icarus Blade samples attached. CR basing designs upon the following:

- Approx 200mm wide blades.
- 7 blades to be used for the South-facing screen. 1,560mm wide approx.
- 5 blades to be used for the West-facing screen. 1,150mm wide approx.
- Blades ideally to be 'wrapped' with a light oak finish. ACW to check whether this is available and whether the finish is suitable for a maritime setting. **ACW**
- All other bracketry to be powder coated for a maritime specification.
- Blades ideally to be suspended from outrigger brackets to lower them down from the fixing point within the RC ring beam.
- Ideally, CR would prefer a nominal 250mm deep fascia to contain the blades – powder coated.
- The Renson quote should be supply and fix and should supply all material from the thermally broken primary bracket (to be supplied by others) onwards.
- ACW to review quotation. **ACW**

2. Master Bedroom Corner Window

The Panovista system cannot offer Blackout standard because it does not have sealed side tracks. It can provide Dim-out standard which might be adequate. Alternatively, the internal sheers might need adjusting to provide more cover. **All**

3. W09 – Master Bed South-Facing Window

To achieve blackout standard – this blind has to be formed in 2 panels with a guide rail in the middle.

4. Bed 4 Vertical/Horizontal Slot Window

Again, blackout standard cannot be achieved on the rooflight. ACW suggests either to look at the internal blind specification or to oversize the external rooflight blind.

5. W07 – Large Living Area Window

CP Interiors to seek alternative systems to the 3 panel system currently proposed. The intent being to omit the vertical guide bards which would intrude into the open space created.

6. Rooflights

The other rooflights are generally to have internal blinds. The large rooflight over the staircase however ought to have an external blind. ACW to add this item to a separate quotation. **ACW**

ATTACHMENTS

- Blade photos.
- Brise Soleil mark-ups.

DISTRIBUTION *(via Email)*

All attendees
Ben & Antonia Cooke Clients
Marc Medland Marc Medland Architect
Rachel Baugh CP interiors
File



RENSON
Creating healthy spaces



 **RENSON**
Creating healthy spaces



a d

b d

c d

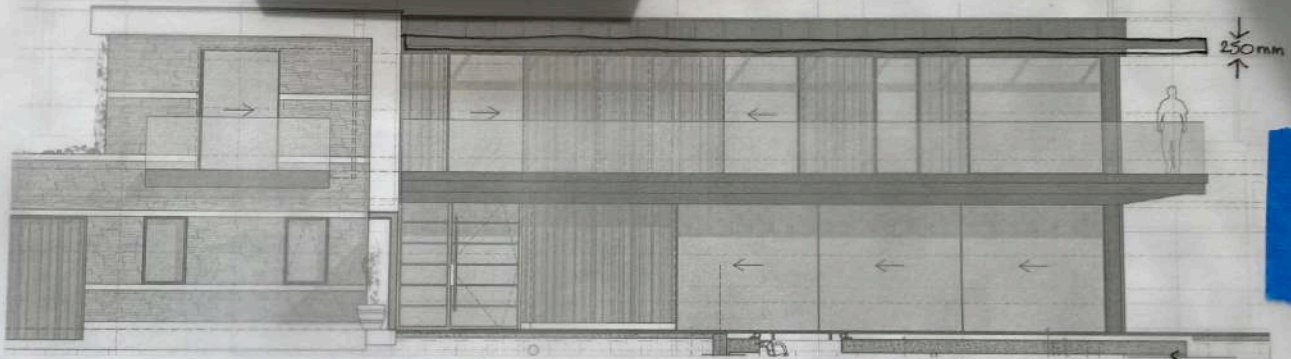
c c c c

c c c

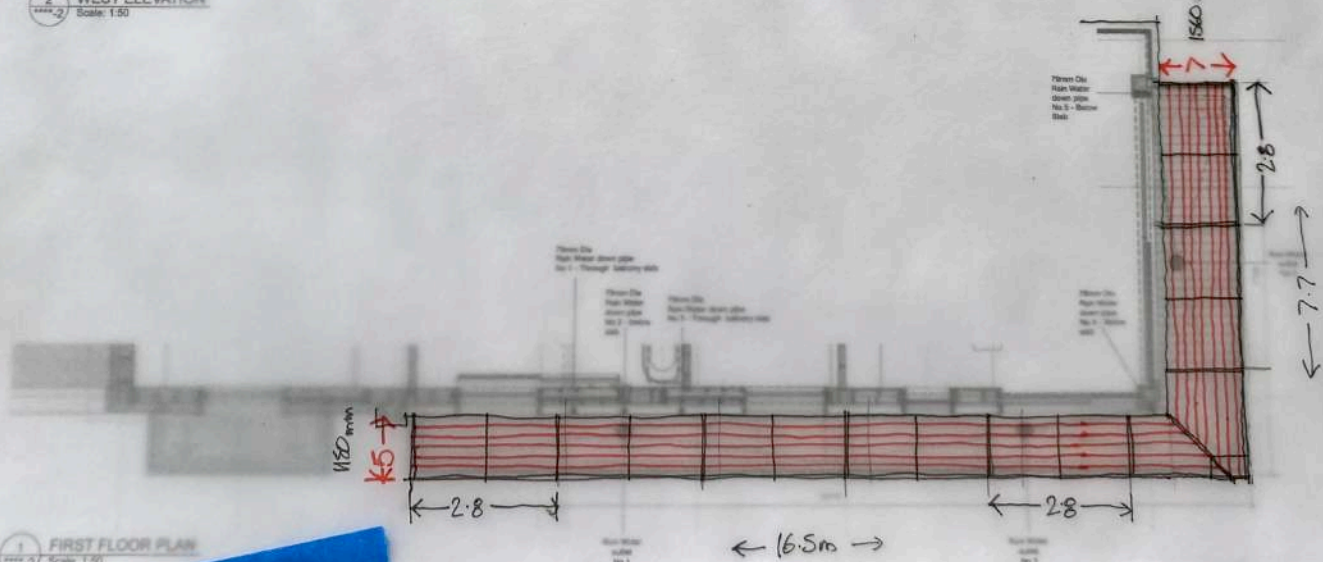
RENSON
Creating healthy spaces.

RENSON
Creating healthy spaces.

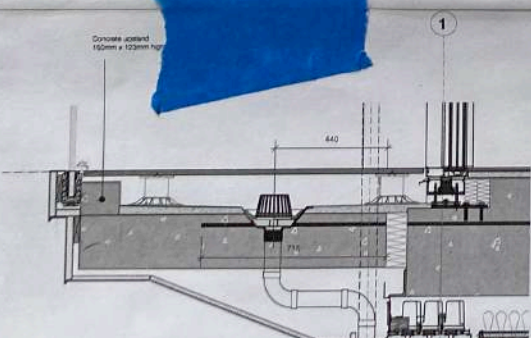
BRISE SOLEIL - Blades



2 WEST ELEVATION
Scale: 1:50



1 FIRST FLOOR PLAN
Scale: 1:50



GENERAL NOTES:
This drawing must not be copied in whole or in part without prior written permission of the Architect's Office. This drawing must be read in conjunction with other approved drawings & specifications. It is the contractor's responsibility to ensure that all work is carried out in accordance with all statutory requirements and to the approval of the Building Control Officer (B.C.O.). The contractor is responsible for the setting out of the work. Any discrepancy found between this drawing and any other contract's main drawing, schedule, or specification must be reported to the architect before the work is started. Do not scale from this drawing. Refer only to written dimensions. All dimensions must be obtained on site. The Architect's Office

