

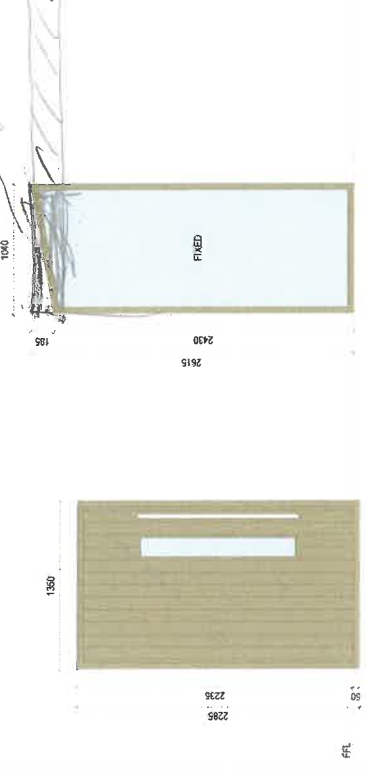
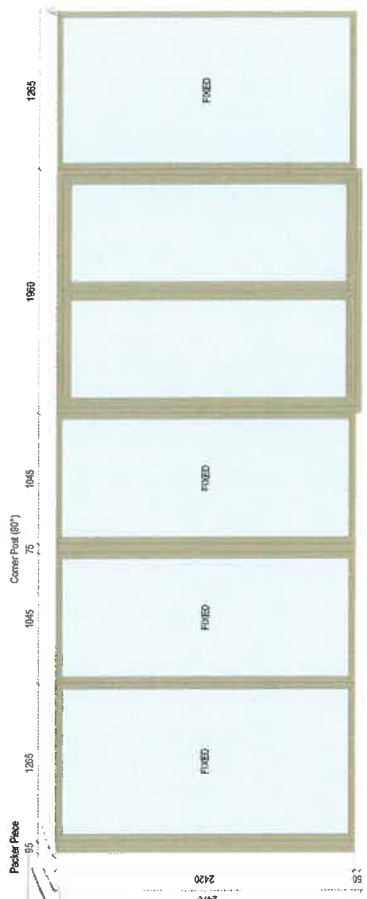
This drawing remains the copyright of MS Planning Ltd. This drawing is to be used in conjunction with all other drawings and documents issued by MS Planning Ltd. No part of this drawing or its contents shall be copied, reproduced, stored in a retrieval system, or transmitted in any form or by any means, electronic, mechanical, photocopying, recording, or by any information storage and retrieval system, without the prior written permission of MS Planning Ltd.

ALL STRUCTURAL OPENING SIZES TO BE MEASURED ON SITE PRIOR TO MANUFACTURE OF WINDOWS & DOORS.

FINAL SPECIFICATION OF ALL DOUBLE GLAZED CASEMENT WINDOWS TO BE DETAILED BY SPECIALIST MANUFACTURER.

MEANS OF TRICKLE VENTILATION TO MEET THE VALUES STATED IN THE BUILDING CONTROL SPECIFICATION TO BE PROVIDED BY WINDOWS & DOORS TO UNCHANGED VALUE.

DIMENSIONS SHOWN FOR WINDOWS & DOORS IN NEW STRUCTURAL OPENINGS ARE TO THE OVERALL FRAME SIZE. MANUFACTURERS TOLERANCES ARE TO BE ALLOWED FOR.



WINDOW REFERENCE_G01

WINDOW REFERENCE_G02

WINDOW REFERENCE_G03

WINDOW REFERENCE_G04

WINDOW REFERENCE_G05

WINDOW REFERENCE_G06

WINDOW REFERENCE_G07

WINDOW REFERENCE_G08

- PPC aluminium double glazed casement window.
- U-value to achieve a minimum of 1.8W/m²K (frame & glass combined).
- Frame colour - TBC.
- Glass specification - TBC.
- Toughened glass up to 800mm minimum from FFL.

- PPC aluminium double glazed door.
- U-value to achieve a minimum of 1.8W/m²K (frame & glass combined).
- Frame colour - TBC.
- Glass specification - TBC.
- Refer to specification for back ground ventilation requirements.
- Toughened glass up to 1500mm minimum from FFL.

- PPC aluminium double glazed casement window.
- U-value to achieve a minimum of 1.8W/m²K (frame & glass combined).
- Frame colour - TBC.
- Glass specification - TBC.
- Refer to specification for back ground ventilation requirements.
- Toughened glass up to 800mm minimum from FFL.

- PPC aluminium double glazed casement window.
- U-value to achieve a minimum of 1.8W/m²K (frame & glass combined).
- Frame colour - TBC.
- Glass specification - TBC.
- Refer to specification for back ground ventilation requirements.
- Toughened glass up to 800mm minimum from FFL.

- PPC aluminium double glazed casement window.
- U-value to achieve a minimum of 1.8W/m²K (frame & glass combined).
- Frame colour - TBC.
- Glass specification - TBC.
- Refer to specification for back ground ventilation requirements.
- Toughened glass up to 800mm minimum from FFL.

- PPC aluminium double glazed casement window.
- U-value to achieve a minimum of 1.8W/m²K (frame & glass combined).
- Frame colour - TBC.
- Glass specification - TBC.
- Refer to specification for back ground ventilation requirements.
- Toughened glass up to 800mm minimum from FFL.

- PPC aluminium double glazed casement window.
- U-value to achieve a minimum of 1.8W/m²K (frame & glass combined).
- Frame colour - TBC.
- Glass specification - TBC.
- Refer to specification for back ground ventilation requirements.
- Toughened glass up to 800mm minimum from FFL.

- PPC aluminium double glazed sliding door.
- U-value to achieve a minimum of 1.8W/m²K (frame & glass combined).
- Frame colour - TBC.
- Glass specification - TBC.
- Refer to specification for back ground ventilation requirements.
- Toughened glass up to 1500mm minimum from FFL.
- Floor finish thickness to be taken into account for flush access.

WINDOW REFERENCE_G09

WINDOW REFERENCE_G10

WINDOW REFERENCE_G11

WINDOW REFERENCE_G12

WINDOW REFERENCE_G13

WINDOW REFERENCE_G14

WINDOW REFERENCE_G15

WINDOW REFERENCE_G16

- PPC aluminium double glazed door.
- U-value to achieve a minimum of 1.8W/m²K (frame & glass combined).
- Frame colour - TBC.
- Glass specification - TBC.
- Refer to specification for back ground ventilation requirements.
- Toughened glass up to 800mm minimum from FFL.

- PPC aluminium double glazed door.
- U-value to achieve a minimum of 1.8W/m²K (frame & glass combined).
- Frame colour - TBC.
- Glass specification - TBC.
- Refer to specification for back ground ventilation requirements.
- Toughened glass up to 1500mm minimum from FFL.

- PPC aluminium double glazed door.
- U-value to achieve a minimum of 1.8W/m²K (frame & glass combined).
- Frame colour - TBC.
- Glass specification - TBC.
- Refer to specification for back ground ventilation requirements.
- Toughened glass up to 1500mm minimum from FFL.

- PPC aluminium double glazed door.
- U-value to achieve a minimum of 1.8W/m²K (frame & glass combined).
- Frame colour - TBC.
- Glass specification - TBC.
- Refer to specification for back ground ventilation requirements.
- Toughened glass up to 1500mm minimum from FFL.

- PPC aluminium double glazed door.
- U-value to achieve a minimum of 1.8W/m²K (frame & glass combined).
- Frame colour - TBC.
- Glass specification - TBC.
- Refer to specification for back ground ventilation requirements.
- Toughened glass up to 1500mm minimum from FFL.

- PPC aluminium double glazed door.
- U-value to achieve a minimum of 1.8W/m²K (frame & glass combined).
- Frame colour - TBC.
- Glass specification - TBC.
- Refer to specification for back ground ventilation requirements.
- Toughened glass up to 1500mm minimum from FFL.

- PPC aluminium double glazed door.
- U-value to achieve a minimum of 1.8W/m²K (frame & glass combined).
- Frame colour - TBC.
- Glass specification - TBC.
- Refer to specification for back ground ventilation requirements.
- Toughened glass up to 1500mm minimum from FFL.

- PPC aluminium double glazed door.
- U-value to achieve a minimum of 1.8W/m²K (frame & glass combined).
- Frame colour - TBC.
- Glass specification - TBC.
- Refer to specification for back ground ventilation requirements.
- Toughened glass up to 1500mm minimum from FFL.



DOOR REFERENCE_G09

DOOR REFERENCE_G10

DOOR REFERENCE_G11

DOOR REFERENCE_G12

DOOR REFERENCE_G13

DOOR REFERENCE_G14

DOOR REFERENCE_G15

DOOR REFERENCE_G16

- Picket timber door.
- U-value to achieve a minimum of 1.8W/m²K.
- Frame colour - TBC.
- Refer to specification for back ground ventilation requirements.
- Floor finish thickness to be taken into account for flush access.

- Picket timber double glazed door.
- U-value to achieve a minimum of 1.8W/m²K (frame & glass combined).
- Frame colour - TBC.
- Glass specification - TBC.
- Refer to specification for back ground ventilation requirements.
- Toughened glass up to 1500mm minimum from FFL.

- Picket timber double glazed door.
- U-value to achieve a minimum of 1.8W/m²K (frame & glass combined).
- Frame colour - TBC.
- Glass specification - TBC.
- Refer to specification for back ground ventilation requirements.
- Toughened glass up to 1500mm minimum from FFL.

- Picket timber double glazed door.
- U-value to achieve a minimum of 1.8W/m²K (frame & glass combined).
- Frame colour - TBC.
- Glass specification - TBC.
- Refer to specification for back ground ventilation requirements.
- Toughened glass up to 1500mm minimum from FFL.

- Picket timber double glazed door.
- U-value to achieve a minimum of 1.8W/m²K (frame & glass combined).
- Frame colour - TBC.
- Glass specification - TBC.
- Refer to specification for back ground ventilation requirements.
- Toughened glass up to 1500mm minimum from FFL.

- Picket timber double glazed door.
- U-value to achieve a minimum of 1.8W/m²K (frame & glass combined).
- Frame colour - TBC.
- Glass specification - TBC.
- Refer to specification for back ground ventilation requirements.
- Toughened glass up to 1500mm minimum from FFL.

- Picket timber double glazed door.
- U-value to achieve a minimum of 1.8W/m²K (frame & glass combined).
- Frame colour - TBC.
- Glass specification - TBC.
- Refer to specification for back ground ventilation requirements.
- Toughened glass up to 1500mm minimum from FFL.

- Picket timber double glazed door.
- U-value to achieve a minimum of 1.8W/m²K (frame & glass combined).
- Frame colour - TBC.
- Glass specification - TBC.
- Refer to specification for back ground ventilation requirements.
- Toughened glass up to 1500mm minimum from FFL.

MS Planning
Architectural & Planning
11 Belsize Park,
Belsize Avenue,
London NW3 4RT
T: 01204 882825
F: 01204 882826
E: info@msplanning.co.uk
W: www.msplanning.co.uk

Client: MR & MRS L BRIN
Project: LE PETIT FERON, GROUWILLE
Drawing: PROPOSED WINDOW & DOOR - SCHEDULE 1

Drawn: OD
Checked:
Scale: 1:20 @ A1
Date: AUG 22

Dwg. no. MSP-2841-BC09
Rev. A

Handwritten notes:
"Double Glazing"
"Picket Timber"
"Claypitt"