

**ECONOMY SELECT**



2024-11-14 MYDHL+ 1.0 / 30-0821\*

From : PREMIERCHOICE LIMITED

JESS

3 Algore Way  
Wessentham Lane  
Wisbech  
PE13 2TQ Wisbech  
United Kingdom

Origin:

**BHX**

To : C P INTERIORS

GOODS INWARDS  
RUE DES PRES TRADING ESTATE

Contact:  
GOODS INWARDS

JE27QN ST. SAVIOUR

L Jersey

**DD02 JE-JER-JER**

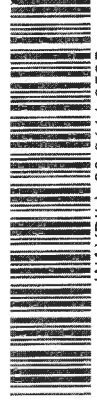
**C-PLT**

Day Time

Ref: HODGETTS CURTAINS & FERGU  
SON CUSHION COVER

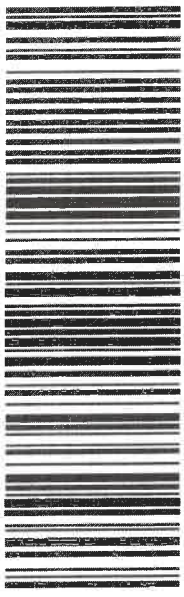
Per/Shpt Weight

**17.4 kg 1/1**

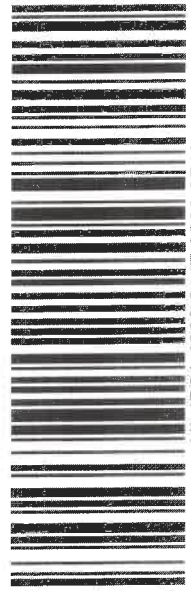


WAYBILL 29 811 0565

Contents: SO16039  
HODGETTS PAIR  
CURTAINS & SO16157  
FERGUSON CUSHION  
COVER



(2L)JEJE27QN+57000001



(J) JD01 4600 0117 9586 0712

RECEIVED

19 NOV 2024

SCANNED

19/11/24

1 x Box with

SO16039(1) Hedgetts  
LIVING ROOM

SO16157

Ferguson

CURTAIN ORDER FORM WEBSITE					
<b>COMPANY</b> CP INTERIORS		<b>CUSTOMER:</b> HODGETTS		<b>ORDER REFERENCE:</b> S016036	
<b>CONTACT NAME:</b> RACH					
<b>FABRIC DETAILS:</b> CARLUCCI CLOSE UP CA1673/091		<b>FABRIC WIDTH:</b> 300cm	<b>FABRIC REPEAT:</b>	<b>QUANTITY:</b> 9m	<b>RAILROAD:</b> yes
<b>COLOUR OF LINING IVORY OR ALMOND</b>					
<b>DATE :</b> 22/10	<b>PC PREMIUM LINING:</b>	<b>PC STANDARD LINING:</b> yes ✓	<b>PC BLACKOUT LINING:</b>	<b>PC INTERLINING:</b>	<b>PC SATIN FLEECE LINING:</b>
<b>TRIM/BRAID /BORDER :</b>	<b>BORDER SIZE:</b>	<b>TOP:</b>	<b>BOTTOM:</b>	<b>LEADING EDGE:</b>	<b>RTN EDGE:</b>
<b>ALL MEASUREMENTS MUST BE IN METRIC</b>			<b>PAIR 1</b>	<b>PAIR 2</b>	<b>PAIR 3</b>
<b>PAIR</b>			LIVING ROOM ✓		
<b>SINGLE</b>					
<b>WIDTHS PER CURTAIN</b>					
<b>OVERALL DROP</b>			2420 ✓		
<b>HOOK HEIGHT EYE DROP</b>					
<b>TRACK SIZE</b>			3750 ✓		
<b>OVERLAPS &amp; RETURNS</b>					
<b>ADDITIONAL INFORMATION:</b> 9m Carlucci close up arriving from JAB. double pleat header, standard lining pair. ✓					
<b>INTERLINED - HANDSEWN</b>					
<b>LINED - HANDSEWN</b>			yes ✓		
<b>LINED - MACHINE</b>					
<b>HEADING PENCIL</b>					
<b>HEADING TRIPLE PINCH</b>					
<b>HEADING DOUBLE PINCH</b>			yes ✓		
<b>DEPTH OF BUCKRAM:</b>					
<b>SINGLE PLEAT &amp; CARTRIDGE PLEAT(CIRCUMFERENCE OF PLEAT IN CM)</b>					
<b>CARTRIDGE FILLED OR UNFILLED</b>					
<b>HEADING WAVE</b>					
<b>INVISIBLE WAVE</b>					
<b>THIS ORDER INCLUDES ON A SEPARATE SHEET (PLEASE TICK APPROPRIATE BOX)</b>			CURTAINS		

Tamara checked  
24/10/24

CUSHION/PELMET/TIEBACK ORDER FORM						
<b>COMPANY</b> CP Interiors			<b>CUSTOMER:</b> Fergusson		<b>ORDER REF:</b> SO16157	
<b>CONTACT NAME:</b> Tamara			<b>FABRIC DETAILS:</b> ILIV Langholm Spice Q1930 (main fabric) and Romo Orly Dragonfly 7864/14 (piping)		<b>FABRIC WIDTH:</b>	
<b>DATE :</b> 08/10/24		<b>FABRIC REPEAT:</b>	<b>QUANTITY:</b>	<b>RAILROAD:</b>	<b>LEADING EDGE:</b>	<b>RETURN EDGE:</b>
<b>TRIM/BRAID/BORDER :</b>		<b>BORDER SIZE:</b>		<b>TOP:</b>		<b>BOTTOM:</b>
<b>NO OF PELMETS:</b>		<b>MAX DROP::</b>		<b>MIN DROP:</b>		
<b>SHAPED BASE:</b>	<b>STRAIGHT BASE :</b>		<b>PIPED:</b>	<b>BORDER:</b>	<b>TOP:</b>	<b>BOTTOM:</b>
<b>PELMET SIZE INCLUDING RETURNS:</b>				<b>RETURNS SIZE:</b>		
<b>TIE BACKS SELF PIPED:</b>		<b>TIE BACKS CONTRAST PIPED::</b>		<b>TIE BACKS PLAIN:</b>		
<b>CUSHION TYPE:</b> Piped cushion cover	<b>SIZE :</b> 45x45cm		<b>QTY:</b> 2	<b>PLAIN:</b>	<b>PIPED:</b> YES	
<b>ADDITIONAL INFORMATION:</b> Main fabric arriving from CP Interiors, and 0.5m of Orly Dragonfly (for piping only) arriving from Romo. 45x45cm cushion covers, with contrast piping.						
<b>THIS ORDER INCLUDES ON A SEPARATE SHEET (PLEASE TICK APPROPRIATE BOX)</b>						

With feather cushion pads from Fallis Hudson. *FB*