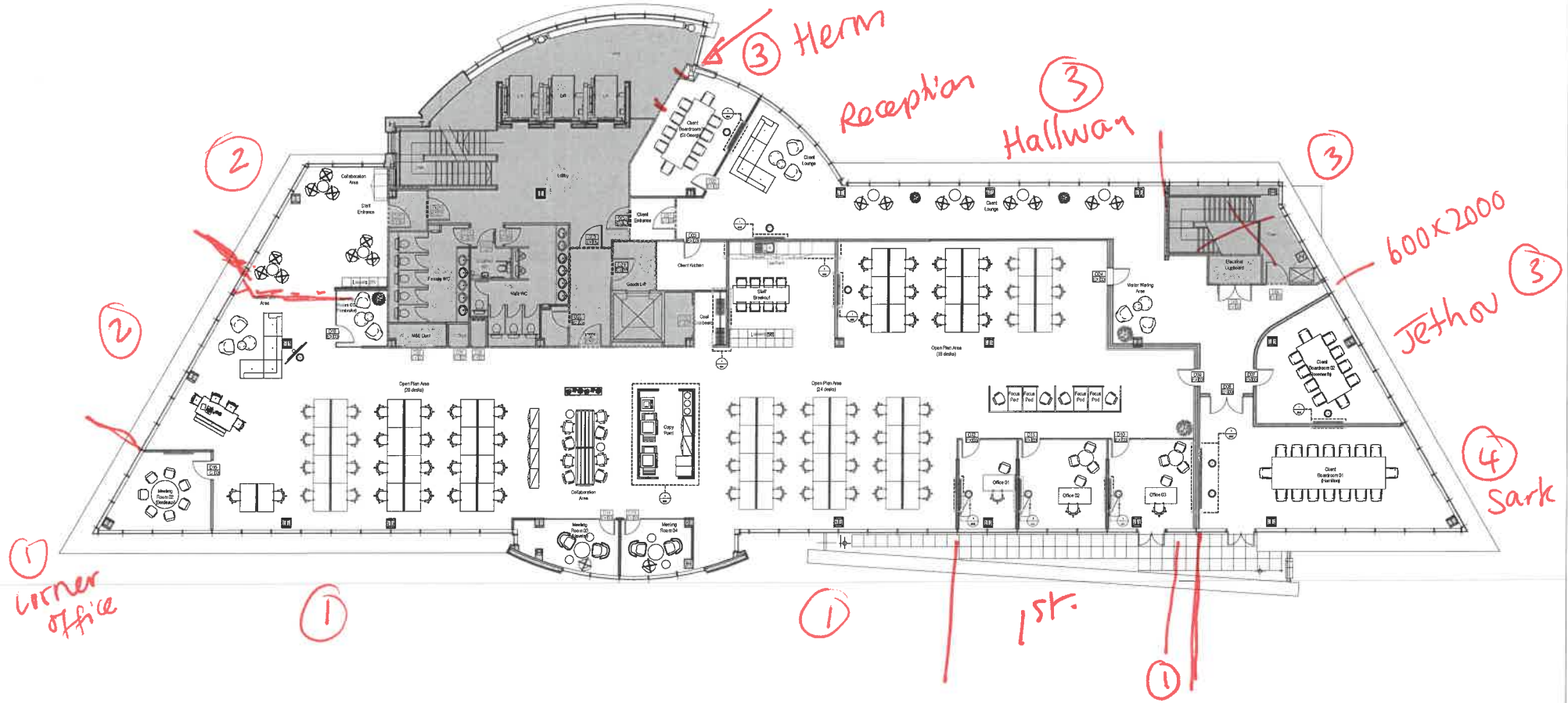


FLOOR 3



LEGEND	
	DOOR TAG
	DOOR NUMBER
	DOOR TYPE
	FLOOR NUMBER
	DETAIL TAG
	TELEVISION LOCATION
	AN EXISTING

NOTES
 Figures and dimensions are to be taken from the drawings. All dimensions are to be checked on site before any work is put in hand. Site, ground, and conditions.
 This drawing is to be read in conjunction with all other contracts, drawings, schedules and specifications.
 All drawings are to be read in conjunction with relevant drawings. If any other contract is in the case of any discrepancy, use contract.
 This drawing is to be read in conjunction with the prior written permission of Axis Mason Ltd.
 © Copyright Axis Mason Ltd

Rev	Description	Drawn	Chk	Date
T1	TENDER ISSUE	DA	AMB	26/02/2024

Client:	Butterfield Gossop
Project:	Martello Court Admiral Park, St. Peter Port
Drawing Title:	General Arrangement Proposed Third Floor Plan

Scale @ A1:	1:100	Date:	FEBRUARY 2024
Project:	MC	Issue:	TENDER
Client:	MC	Status:	TENDER

Job No:	4470	Drawing No:	103	Revision:	T1
---------	------	-------------	-----	-----------	----

AXIS MASON
 30, PARKWAY, ST. PETER PORT, GU98 1AA
 01481 510000

3rd Floor

Start
Corner

x 8

1340	x 2600	TOP	Utr
1495	x		R
1420	x		R
1420	x		L
1495	x		R
1430	x		R
1370	x		L R
1370	x		R
1430			L
3x 1495			R
2x 1495	x 2000		R
1x 1910	x 2000		R
790	x 2600		R
585	x 2600		R

~~TOP~~ 600 x 2600 L

1400 x 2600 R

1380 x 2600 R

1380 x 2600

1370 >

Yes otherwise 440 x 2000

1 1575 x 2000

8 1495 x

1 1450 x

corner floor

1440 x 2000 L

1495 > 2000 R

1500 x 2000 L

1500 x 2000 L

1440 x 2000 R

①

3rd flow | 1400 x 2000 | B/S | L | Jd

prog 2 | SW 1495 x 2000 | ~ | R | ~

⑦ | 1435 x 2000 | ~ | R | ~

can't be | 1435 x 2000 | | L | ~

| 1495 x 2000 | | L | |

| 1190 | 2000 | | R | |

| 1500 x 2000 | ~ | R |

| 1190 x 2000 | ~ | L |

| 1495 x 2000 | | R |

| 1070 x 200 | | R |

⑦

②

3rd floor Herm room 1 1960 x 780 Blf rate FACE
 1225 x 2600 Blf TOP L
 1155 x 2600 ~ R

(3)

recept
 1 1180 2600 L TOP
 3 1235 x ~~1150~~ 2600 Blf L
 1 950 2000 L
 (5)

HSM
 1 1100 x 2000
 9 1495 x 2000
 1 1320 x 2000
 (11)

1 600 x 2000 ~ ~

Sethou

1 1400
 1 880
 1 1675 x 2000 ~ ~
 1 1495
 1 1460

(3)

(3)

3 rd Floor	SARIC Board	room			RS/1	SUP	L	
		1	1380	x	2000	}	}	L
		1	1495	x	2000			R
		1	1480	x	2000			R
		1	1480	x	1			L
		5	1495	x	1			L
		1	1495	x	2600			R
		1	1320	x	2600			R

(11)

(4)