

weinor Ltd 73 Cornhill EC3V 3QQ London

C P Interiors

Rue Des Pres Trading Estate
GB-JE2 7QN St Saviour Jersey

delivery address

DSV Road Ltd
 (NO UPS)
 10 Brunel Way, Segensworth Industrial Estate
 GB-PO15 5TX Hampshire, Fareham
 NO UPS

ORDER CONFIRMATION (release 1)

sales order no.: 202830292 of 19.04.2024
 customer: 165708
 reference: MARETT 2ND FLR 5M SO15459
 Your order no.: SO15459
 contact person: William Abbott
 E-Mail: Wabbott@weinor.de
 phone number: +49-221-59709-472
 representat.: 654 Chris Spickett
 tel (representat.): 0044 (0) 7894443907

pos quantity article code

1	1,00	3461	Smalla campaign	
			Anticipated delivery : 13.05.2024	
			Product use : private house	
			basic data	
			width (mm) : 5000	mm
			Projection [mm] : 3000	mm
			Basic colour : WT029/80081 Iron Glimmer Effect P 7	3.085,00
			Decorative end cap colour : coloured as the construction	
			wall connection : with wall connection	101,00
			no. of arms : 2	Piece
			Bonus selection : BiConnect control including BiEasy 5m handset and BiRec receiver	
			insulation [mm] : 0	mm
			attachment : all bracket 260 mm	
			bracket type 1 : 2	Piece
			number of brackets 1 : 2	88,00

Force 1 means the pull-out force per upper fastener F(B).
Force 1 means the pull-out force per front fastener F(B).

weinor Ltd
 73 Cornhill
 GB-EC3V 3QQ London
 weinor.com

Managing Director:
 Tim Fuldner
 General partner:
 Weinor Beteiligungs-GmbH
 Köln

VAT no.: 335 2381 16
 Company no.: 12193066
 UFR no.: 33431 24084
 EORI no.: GB35238116000

Domestic transfers:
 Commerzbank London
 Sort Code: 406201
 Account Number: 307 537 10

International transfers:
 Commerzbank London
 IBAN: GB51 COBA 4062 0130 7537 10
 Swift: MIDLGB22 a/c COBAGB2X

7/000123/130288-0000 Z

weinor Ltd 73 Cornhill EC3V 3QQ London

customer: 165708 sales order 202830292
 pos quantity article code

Page 2 of 3

Force 1 means the shear force per front fastener F(S).

FB1 Force 1 per fixing point : 3160 N
 M = Torque per folding arm : 664 Nm
Please note that your selected awning configuration results in the following forces per upper fixing point (pull-out, lateral and/or shear forces). These must be accounted for by using suitable fixings.
 bracket position left : 500 Shift range from 465 mm to 535 mm
 bracket position right : 500 Shift range from 465 mm to 535 mm

operation : engine
 type of control : Left
 Side of control (seen from the front)

With remote control BiConnect : Yes! Please remind the separate order!
 Information on BiConnect : The BiConnect has been done in 202830292 position 2!
 electrical engine connection : 114632-0000 Kabel 4G0.75 L240 AMP4/C-Plug
 Hirschmann plug? : Hirschmann plug not assembled
 Type of engine : Motor R40-17-E12-V1+ ohne Zubehör

Dessin : WE3-718 my collections
 real-design :
 colour of thread Saba : RAL 7001 Silver grey
 Cardboard container : edges reinforcement
 weight : 85 kg

value of goods	discount amount / %	net
3.288,00	1.315,20 / 40,00	1.972,80

weinor Ltd
 73 Cornhill
 GB-EC3V 3QQ London
 weinor.com

Managing Director:
 Tim Fuldner
 General partner:
 Weinor Beteiligungs-GmbH
 Köln

VAT no.: 335 2381 16
 Company no.: 12193066
 UFR no.: 33431 24084
 EORI no.: GB35238116000

Domestic transfers:
 Commerzbank London
 Sort Code: 406201
 Account Number: 307 537 10

International transfers:
 Commerzbank London
 IBAN: GB51 COBA 4062 0130 7537 10
 Swift: MIDLGB22 a/c COBAGB2X

7/000123/130288-0000 Z



weinor Ltd 73 Cornhill EC3V 3QQ London

customer: 165708 sales order 202830292
 pos quantity article code

2 1,00 2557 BIConnect

Anticipated delivery : 13.05.2024
 deliver BIConnect separate? : No, supply receiver and handheld remote control with awning
 shipment info : The pre set receivers (except LED) and the handset will be packed with contract number 202830292 pos 1!
 Receiver for motor/ control : 1
 BIRec MA, basic
 BIRec MA-K, basic
 learned on channel 1 : BIRec MA-K, basic
 for order 202830292/1:
 Smalla Aktion engine left
 No. of Bisens Agido-3V : 1
 Piece 167,00

value of goods	discount amount / %	net	VAT (0%)	Total GBP
167,00	66,80 / 40,00	100,20	0,00	2,073,00
3,455,00	1,382,00	2,073,00	0,00	2,073,00

In addition, our General Terms of Delivery and Payment as per 12/2021, published under the link provided below are valid and we are happy to provide you with them free of charge upon request.
<https://www.weinor.com/terms-and-conditions/>

delivery exw Cologne
 payment: With direct debit 5% discount payment
 mode of dispatch UK export

weinor Ltd
 73 Cornhill
 GB-EC3V 3QQ London
 weinor.com

Managing Director:
 Tim Fildner
 General Partner:
 Weinor Belegungs-GmbH
 Köln

VAT no.: 335 238116
 Company no.: 12393066
 UTR no.: 33431 24084
 EORI no.: GB335238116000

Domestic transfers:

Commerzbank London
 Sort Code: 406501
 Account Number: 307 537 10

International transfers:

Commerzbank London
 IBAN: GB51 0824 0002 0130 7537 10
 SWIFT: MIDLEG22#V/C09AG82X



weinor Ltd 73 Cornhill EC3V3QQ London

C P Interiors

**Rue Des Pres Trading Estate
GB-JEZ 7QN St Saviour Jersey**

delivery address

DSV Road Ltd
(NO UPS)
10 Brunel Way, Segensworth Industrial Estate
GB-PO15 5TX Hampshire, Fareham
NO UPS

ORDER CONFIRMATION (release 1)

sales order no.: 202830290 of 19.04.2024
customer: 165708
reference: MARETT GRD FLR 5.5W SO15459
Your order no.: SO15459
contact person: William Abbott
E-Mail: WAbbott@weinor.de
phone number: +49-221-59709-472
representat.: 654 Chris Spickett
tel (representat.): 0044 (0) 7894443907

pos quantity article code

1	1.00	3461	Smailia campaign	
Anticipated delivery			: 13.05.2024	
Product use			: private flat	
basic data				
width (mm)			: 5500	mm
Projection [mm]			: 3000	mm
Basic colour			: W1029/80081 Iron Glimmer Effect P 7	3,241.00
Decorative end cap colour			: coloured as the construction	
wall connection			: with wall connection	109.00
no. of arms			: 2	Piece
Bonus selection			: BiConnect control including BiEasy 5m handset and BIRec receiver	
insulation [mm]			: 0	mm
attachment				
bracket type 1			: all bracket 260 mm	
number of brackets 1			: 2	Piece
Force 1 means the pull-out force per upper fastener F(B).				88.00
Force 1 means the pull-out force per front fastener F(B).				

weinor Ltd
73 Cornhill
GB-EC3V3QQ London
weinor.com

Managing Director:
Tim Füllner
General partner:
Weinor Beteiligungs-GmbH
Köln

VAT no.: 335 238116
Company no.: 12193066
UFR no.: 33431 24084
EOR no.: GB335238116000

Domestic transfers:
Commerzbank London
Sort Code: 406201
Account Number: 307 53710

International transfers:
Commerzbank London
IBAN: GB51 COBA 4062 0130 7537 10
Swift: MIDLGB22 a/c COBAGB2X

7/000/123/130288-0000 Z



weinor Ltd 73 Cornhill EC3V3QQ London

customer: 165708 sales order 202830290
pos quantity article code

Force 1 means the shear force per front fastener F(S).

FBI Force 1 per fixing point : 3424 N
M = Torque per folding arm : 719 Nm
Please note that your selected awning configuration results in the following forces per upper fixing point (pull-out, lateral and/or shear forces). These must be accounted for by using suitable fixings.
bracket position left : 550 Shift range from 515 mm to 585 mm
bracket position right : 550 Shift range from 515 mm to 585 mm

operation : engine
type of control : right
Side of control (seen from the front)

With remote control BiConnect : Yes! Please remind the separate order!
Information on BiConnect : The BiConnect has been done in 202830290 position 2!
electrical engine connection : 114632-0000 Kabel 4G0.75 L240 AMP4/C-Plug
Hirschmann plug? : Hirschmann plug not assembled
Type of engine : Motor R40-17-E12-V1+ ohne Zubehör

Dessin : WE3-718 my collections
reat-design : RAL 7001 Silver grey
colour of thread Saba : edges reinforcement
Cardboard container : 91
weight : kg

value of goods discount amount / % net
3.452,00 1.380,80 / 40,00 2.071,20

weinor Ltd
73 Cornhill
GB-EC3V3QQ London
weinor.com

Managing Director:
Tim Füllner
General partner:
Weinor Beteiligungs-GmbH
Köln

VAT no.: 335 238116
Company no.: 12193066
UFR no.: 33431 24084
EOR no.: GB335238116000

Domestic transfers:
Commerzbank London
Sort Code: 406201
Account Number: 307 53710

International transfers:
Commerzbank London
IBAN: GB51 COBA 4062 0130 7537 10
Swift: MIDLGB22 a/c COBAGB2X

7/000/123/130288-0000 Z



weinor Ltd 73 Cornhill EC3V 3QQ London

customer: 165708 sales order 202830290
 pos quantity article code

2 1,00 2557 BiConnect

Anticipated delivery : 13.05.2024
 deliver BiConnect separate? : No: supply receiver and handheld remote control with awning
 shipment info : The pre set receivers (except LED) and the handset will be packed with contract number 202830290 pos 1!
 Receiver for motor/ : 1 BiRec MA, basic
 control : BiConnect BiEasy 5M (silver version)
 learned on channel 1 : BiRec MA-K, basic for order 202830290/1:
 No. of BiSens Agido-3V : 1 Smalla Aktion engine right Piece 167,00

value of goods	discount amount / %	net	VAT (0%)	Total GBP
167,00	66,80 / 40,00	100,20	0,00	2.171,40
3.619,00	1.447,60	2.171,40	0,00	2.171,40

In addition, our General Terms of Delivery and Payment as per 12/2021, published under the link provided below are valid and we are happy to provide you with them free of charge upon request.
<https://www.weinor.com/terms-and-conditions/>

delivery exw Cologne
 payment: With direct debit 5% discount payment
 mode of dispatch UK export

weinor Ltd
 73 Cornhill
 GB-EC3V 3QQ London
 weinor.com

Managing Director:
 Tim Rüdiger
 General Partner
 Weinor Betätigungs-GmbH
 Köln

VAT no.: 335 238116
 Company no.: 1293066
 UTR no.: 33431 24084
 EORI no.: GB335238116000

Domestic transfers:
 Commerzbank London
 Sort Code 406201
 Account Number 307 537 10

International transfers:
 Commerzbank London
 IBAN: GB51 0004 4062 0130 7537 10
 Swift: WIDLGB22 a/c COBA332X

Work Diary

Staff Name: Adrian

Order No: SO15459

Measurer or Fitter: Measurer

Contact Address: Marett Construction, Les Chene, La Longue Rue, Grouville, JE3 6ED, 854025, 07700 888224, admin@marettconstruction.com

Customer Ref: Shore Park, Route de la Haule

Date: 29-02-2024

Time: 09:00

Notes: Neal - smailia awning

Location	Supplier	Blind Type /Description	Colour	Qty	Width	Drop	Fitting Height	Blind/Recess	Controls	Brackets	Surface	Unit Price
2nd Floor	Smailia			1	5500	3000	#		RHM			5738
"	"	"		1	5000	3000			LHM			5492
2nd Floor	"	"		1	5000	3000			LHM			5492
		(OK)										
Grd	KLSASA			1	6000	3000	#					6842
Grd	For AM			1	5000	3000						6315
2nd Floor	All Electric + Asido			1	5000	3000						6315

2nd floor - LHM
 1st floor Right - LHM
 1st floor Left - RHM.
 (Neal + ACW notes)
 Saved in BM

Comments: _____

_____ the above choices

_____ Date

Configuration details

weinor Ltd 73 Cornhill EC3V 3QQ London

C P Interiors

**Rue Des Pres Trading Estate
GB-JE2 7QN St Saviour Jersey**

reference: MARETT GRD FLR 5.5M SO15459
 Your order no.: SO15459
 weinor customernumber: 165708
 creation Date: 16.04.2024
 weinor pers. in charge: William Abbott
 phone / fax number: +49-221-59709-472
 representat.: Chris Spickett
 tel (representat.): 0044 (0) 7894443907

pos	quantity	article	price
1	1	weinor Smaila campaign	3.391,00
		Product use : private flat	
		width [mm] : 5500 mm	
		Projection [mm] : 3000 mm	3.241,00
		Base colour : WT029/80081 Iron Glimmer Effect P 7	
		Decorative end cap colour : coloured as the construction	
		no. of arms : 2 Piece	
		Control type : BiConnect control including BiEasy 5m handset and BiRec receiver	
		insulation [mm] : 0 mm	
		bracket type 1 : wall bracket 270 mm	
		number of brackets 1 : 2 Piece	136,00
		FB1 Force 1 per fixing point : 3424 N	
		Torque per folding arm [Nm] : 719 Nm	
		bracket position left : 550 Shift range from 515 mm to 585 mm	
		bracket position right : 550 Shift range from 515 mm to 585 mm	
		type of control : engine	
		Side of control (seen from the front) : right	
		With remote control BiConnectWith remote control BiConnect : Yes! Please remind the separate order!	
		Information on BiConnect electrical engine connection : The BiConnect has been done in 503919271 position 2! : 114632-0000 Kabel 4G0.75 L240 AMP4/C-Plug	
		Hirschmann plug? : Hirschmann plug not assembled	14,00
		type of motor :	
		real-design : WE3-718 my collections	
		colour of thread Saba : RAL 7001 Silver grey	

weinor Ltd
73 Cornhill
GB-EC3V 3QQ London
weinor.com

Managing Director:
Tim Földner
General partner:
Weinor Beteiligungs-GmbH
Köln

VAT no.: 335 2381 16
Company no.: 12193066
UTR no.: 33431 24084
EORI no.: GB335238116000

Domestic transfers:
Commerzbank London
Sort Code: 406201
Account Number: 307 537 10

International transfers:
Commerzbank London
IBAN: GB51 COBA 4062 0130 7537 10
Swift: MIDLGB22 a/c COBAGB2X

Configuration details

weinor Ltd 73 Cornhill EC3V 3QQ London

customer: 165708 reference: MARETT GRD FLR 5.5M SO15459 Page 2 of 2

pos	quantity	article	price
-----	----------	---------	-------

Cardboard packaging : edges reinforcement
weight : 91 kg

value of goods	discount amount / %	net
3.391,00	1.356,40 / 40,00	2.034,60

2	1	weinor BiConnect	167,00
----------	----------	-------------------------	---------------

deliver BiConnect separate? : No; supply receiver and handheld remote control with awning
shipment info : The pre set receivers (except LED) and the handset will be packed with contract number 503919271 pos 1!

Receiver for motor : 1 BiRec MA, basic
control : BiConnect BiEasy 5M (silver version)
learned on channel 1 : BiRec MA-K, basic for order 503919271/1: Smaila Aktion engine right

No. of BiSens Agido-3V	: 1 Piece	167,00
------------------------	-----------	--------

value of goods	discount amount / %	net
167,00	66,80 / 40,00	100,20

value of goods GBP	discount amount	net GBP	VAT (0 %)	Total GBP
3.558,00	1.423,20	2.134,80	0,00	2.134,80

Configuration details

weinor Ltd 73 Cornhill EC3V 3QQ London

customer: 165708 reference: MARETT GRD FLR 5M SO15459 Page 2 of 2

pos	quantity	article	price
-----	----------	---------	-------

Cardboard packaging : edges reinforcement
weight : 85 kg

value of goods	discount amount / %	net
3.235,00	1.294,00 / 40,00	1.941,00

2	1	weinor BiConnect	167,00
---	---	------------------	--------

deliver BiConnect separate? : No; supply receiver and handheld remote control with awning
shipment info : The pre set receivers (except LED) and the handset will be packed with contract number 503919308 pos 1!

Receiver for motor : 1 BiRec MA, basic
control : BiConnect BiEasy 5M (silver version)
learned on channel 1 : BiRec MA-K, basic for order 503919308/1: Smaila Aktion engine left
No. of BiSens Agido-3V : 1 Piece

value of goods	discount amount / %	net
167,00	66,80 / 40,00	100,20

value of goods GBP	discount amount	net GBP	VAT (0 %)	Total GBP
3.402,00	1.360,80	2.041,20	0,00	2.041,20

Configuration details

weinor Ltd 73 Cornhill EC3V 3QQ London

C P Interiors

Rue Des Pres Trading Estate
GB-JE2 7QN St Saviour Jersey

reference: MARETT GRD FLR 5M SO15459
Your order no.: SO15459
weinor customernumber: 165708
creation Date: 16.04.2024
weinor pers. in charge: William Abbott
phone / fax number: +49-221-59709-472
representat.: Chris Spickett
tel (representat.): 0044 (0) 7894443907

pos	quantity	article	price
1	1	weinor Smaila campaign	3.235,00

Product use	: private house	
width [mm]	: 5000 mm	
Projection [mm]	: 3000 mm	3.085,00
Base colour	: WT029/80081 Iron Glimmer Effect P 7	
Decorative end cap colour	: coloured as the construction	
no. of arms	: 2 Piece	
Control type	: BiConnect control including BiEasy 5m handset and BiRec receiver	
insulation [mm]	: 0 mm	
bracket type 1	: wall bracket 270 mm	
number of brackets 1	: 2 Piece	136,00
FB1 Force 1 per fixing point	: 3160 N	
Torque per folding arm [Nm]	: 664 Nm	
bracket position left	: 500 Shift range from 465 mm to 535 mm	
bracket position right	: 500 Shift range from 465 mm to 535 mm	
type of control	: engine	
Side of control (seen from the front)	: Left	
With remote control BiConnectWith remote control BiConnect	: Yes! Please remind the separate order!	
Information on BiConnect electrical engine connection	: The BiConnect has been done in 503919308 position 2! : 114632-0000 Kabel 4G0.75 L240 AMP4/C-Plug	
Hirschmann plug?	: Hirschmann plug not assembled	14,00
type of motor	:	
real-design	: WE3-718 my collections	
colour of thread Saba	: RAL 7001 Silver grey	

weinor Ltd
73 Cornhill
GB-EC3V 3QQ London
weinor.com

Managing Director:
Tim Földner
General partner:
Weinor Beteiligungs-GmbH
Köln

VAT no.: 335 2381 16
Company no.: 12193066
UTR no.: 33431 24084
EORI no.: GB335238116000

Domestic transfers:
Commerzbank London
Sort Code: 406201
Account Number: 307 537 10

International transfers:
Commerzbank London
IBAN: GB51 COBA 4062 0130 7537 10
Swift: MIDLGB22 a/c COBAGB2X



Configuration details

weinor Ltd 73 Cornhill EC3V 3QQ London

customer: 165708 reference: MARETT 2ND FLR 5M SO15459 Page 2 of 2

pos	quantity	article			price
Cardboard packaging		: edges reinforcement			
weight		: 85 kg			
			value of goods	discount amount / %	net
			3.235,00	1.294,00 / 40,00	1.941,00

2	1	weinor BiConnect			167,00
----------	----------	-------------------------	--	--	---------------

deliver BiConnect separate?	: No; supply receiver and handheld remote control with awning				
shipment info	: The pre set receivers (except LED) and the handset will be packed with contract number 503919326 pos 1!				
Receiver for motor control	: 1 BiRec MA, basic				
learned on channel 1	: BiConnect BiEasy 5M (silver version).				
No. of BiSens Agido-3V	: BiRec MA-K, basic for order 503919326/1: Smaila Aktion engine left				
	: 1 Piece			167,00	
			value of goods	discount amount / %	net
			167,00	66,80 / 40,00	100,20

value of goods GBP	discount amount	net GBP	VAT (0 %)	Total GBP
3.402,00	1.360,80	2.041,20	0,00	2.041,20

Configuration details

weinor Ltd 73 Cornhill EC3V 3QQ London

C P Interiors

Rue Des Pres Trading Estate
GB-JE2 7QN St Saviour Jersey

reference: MARETT 2ND FLR 5M SO15459
Your order no.: SO15459
weinor customernumber: 165708
creation Date: 16.04.2024
weinor pers. in charge: William Abbott
phone / fax number: +49-221-59709-472
representat.: Chris Spickett
tel (representat.): 0044 (0) 7894443907

pos	quantity	article	price
1	1	weinor Smaila campaign	3.235,00
		Product use : private house	
		width [mm] : 5000 mm	
		Projection [mm] : 3000 mm	3.085,00
		Base colour : WT029/80081 Iron Glimmer Effect P 7	
		Decorative end cap colour : coloured as the construction	
		no. of arms : 2 Piece	
		Control type : BiConnect control including BiEasy 5m handset and BiRec receiver	
		insulation [mm] : 0 mm	
		bracket type 1 : wall bracket 270 mm	
		number of brackets 1 : 2 Piece	136,00
		FB1 Force 1 per fixing point : 3160 N	
		Torque per folding arm [Nm] : 664 Nm	
		bracket position left : 500 Shift range from 465 mm to 535 mm	
		bracket position right : 500 Shift range from 465 mm to 535 mm	
		type of control : engine	
		Side of control (seen from the front) : Left	
		With remote control BiConnectWith remote control BiConnect : Yes! Please remind the separate order!	
		Information on BiConnect electrical engine connection : The BiConnect has been done in 503919326 position 2!	
		Hirschmann plug? : 114632-0000 Kabel 4G0.75 L240 AMP4/C-Plug	
		type of motor : Hirschmann plug not assembled	14,00
		real-design : WE3-718 my collections	
		colour of thread Saba : RAL 7001 Silver grey	

weinor Ltd
73 Cornhill
GB-EC3V 3QQ London
weinor.com

Managing Director:
Tim Földner
General partner:
Weinor Beteiligungs-GmbH
Köln

VAT no.: 335 2381 16
Company no.: 12193066
UTR no.: 33431 24084
EORI no.: GB335238116000

Domestic transfers:
Commerzbank London
Sort Code: 406201
Account Number: 307 537 10

International transfers:
Commerzbank London
IBAN: GB51 COBA 4062 0130 7537 10
Swift: MIDLGB22 a/c COBAGB2X

neal@maretconstruction.com



CP INTERIORS

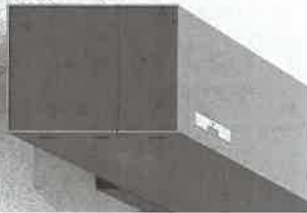
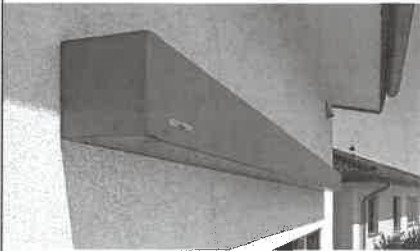
Mr. Neal Taylor
Marett Construction
Les Chene
La Longue Rue
Grouville
JE3 6ED

Date	Reference	Your Contact
05-03-2024	SO15459	Leeana
Customer Ref.		
Shore Park, Route de la Haule		

Quote

Our Price Promise to you
We are so confident our pricing is competitive, that we will beat any written quotation for equivalent product by 5%

Supply & Fit/Supply Only

Location	Description	QTY	Price
Smailia Awning	Awning / Canopy, Ground Floor 5.5m x 3m, 5m x 3m 2nd Floor 5m x 3m. Electrically Operated, powder coated frame in WT Trend RAL colour TBC with matching end caps (can be contrasted). Acrylic fabric TBC. Includes vibration sensor and 2 no. remote controls. 	3	£ 16,722.00
Kubata Awning	. or, Awning / Canopy, Ground Floor 6m x 3m, 5m x 3m 2nd Floor 5m x 3m. Electrically Operated, powder coated frame in WT Trend RAL colour TBC with matching end caps (can be contrasted). Acrylic fabric TBC. Includes vibration sensor and 2 no. remote controls. 	3	£ 19,472.00
	. excludes wiring,		

Terms : 40% deposit due with order, 40% on delivery & final 20% on completion

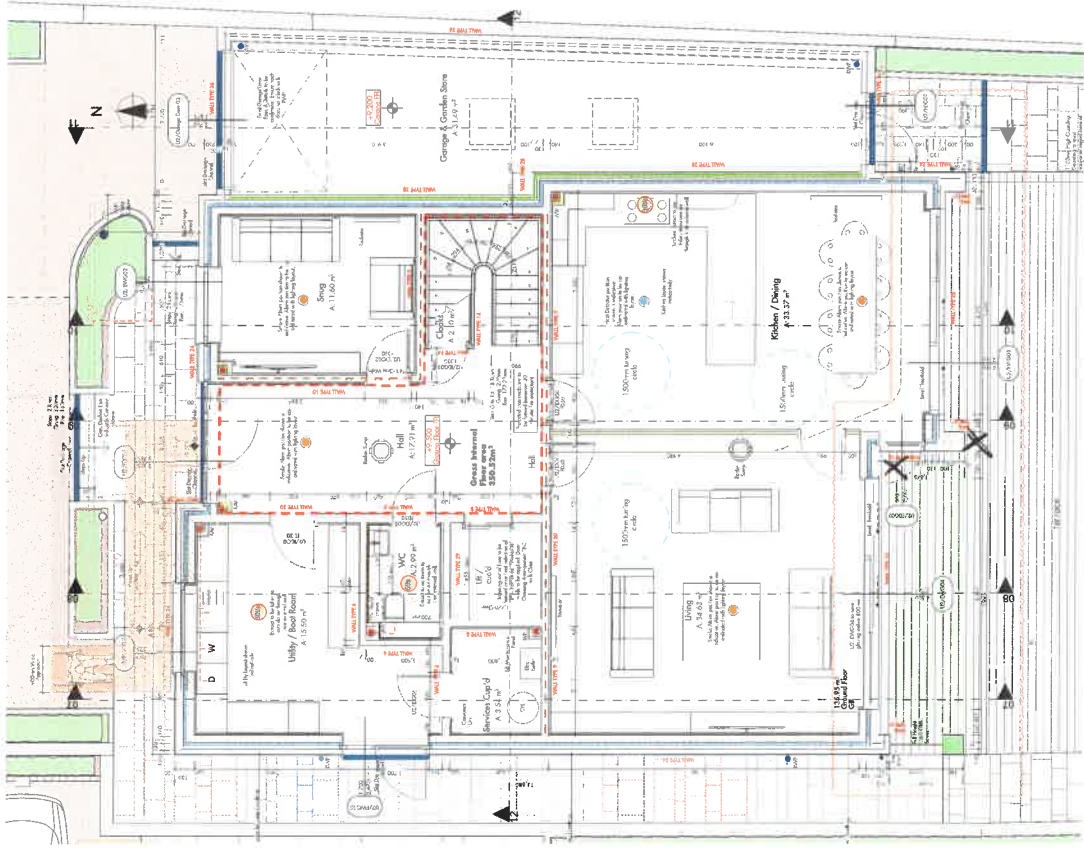
BACS Payment	
Bank:	NatWest
Sort Code:	60 12 03
Account No:	66577772
Carpet Protection (C.I) Ltd T/A CP Interiors	

Phone and Card Payment
Payment can be made in person or by phone. If phone, please call us on 01534 768141 and have your card details ready. Note, we do not accept American Express or Cheque payments.

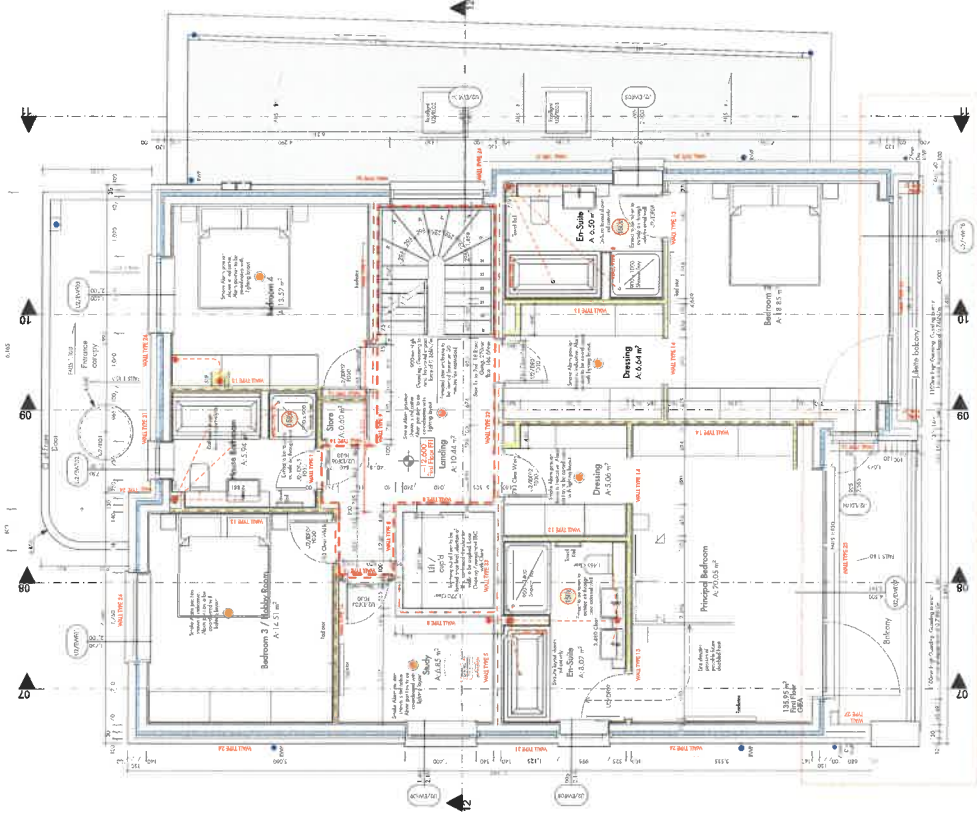
Prices are subject to GST

Please note: This quotation is only valid for acceptance for 14 days. Our estimate does not include any electrical work or additional carpentry work to install the above unless otherwise specified. Please note there is a handling charge on customer own fabric of £7.50 per metre. Due to high costs of labour, pre-arranged missed fitting appointments will be charged on a time-wasted basis. Settlement is due on completion of works and an administration charge of £25 will be added per month if unpaid within 30 days. We reserve the right to charge for design, advice and liaison work carried out should an order not be placed. Goods remain the property of CP Interiors until full settlement is received. Should payment not be received we reserve the right to attend premises during working hours to remove goods and not be required to make good. Our full terms and conditions apply and are available on request.



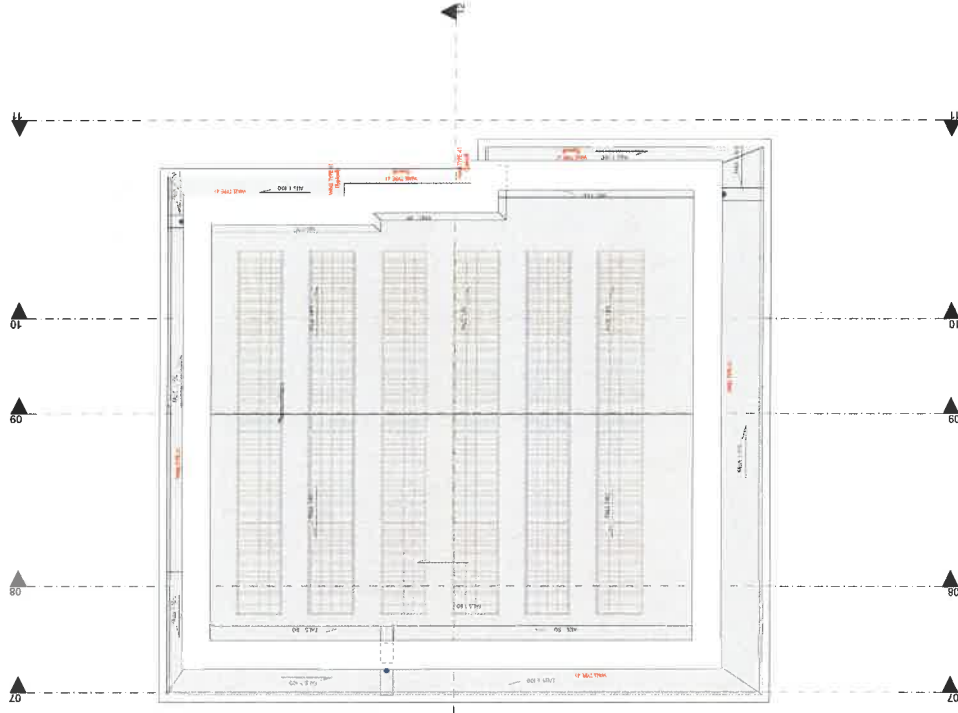


Proposed Ground Floor Plan - Unit 2 1:50



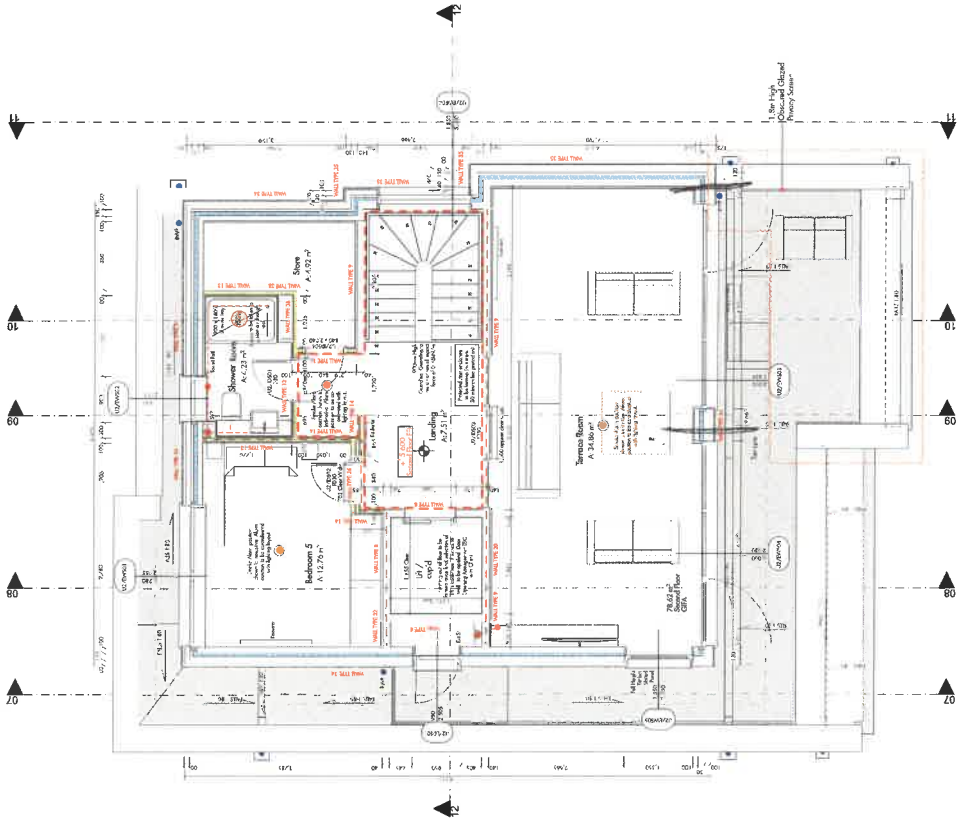
Proposed First Floor Plan - Unit 2 1:50

<p>Notes:</p> <p>1. The information on this drawing is for general information only. It is not to be used for construction purposes without the approval of the architect.</p> <p>2. Do not scale dimensions. All dimensions are as indicated on the drawing.</p> <p>3. For more information, please contact the architect.</p>	<p>Revisions:</p> <table border="1"> <tr> <th>No.</th> <th>Date</th> <th>Description</th> </tr> <tr> <td>01</td> <td>10/01/2021</td> <td>Issue for tender</td> </tr> <tr> <td>02</td> <td>10/01/2021</td> <td>Issue for tender</td> </tr> <tr> <td>03</td> <td>10/01/2021</td> <td>Issue for tender</td> </tr> <tr> <td>04</td> <td>10/01/2021</td> <td>Issue for tender</td> </tr> <tr> <td>05</td> <td>10/01/2021</td> <td>Issue for tender</td> </tr> <tr> <td>06</td> <td>10/01/2021</td> <td>Issue for tender</td> </tr> <tr> <td>07</td> <td>10/01/2021</td> <td>Issue for tender</td> </tr> </table>	No.	Date	Description	01	10/01/2021	Issue for tender	02	10/01/2021	Issue for tender	03	10/01/2021	Issue for tender	04	10/01/2021	Issue for tender	05	10/01/2021	Issue for tender	06	10/01/2021	Issue for tender	07	10/01/2021	Issue for tender	<p>Architect:</p> <p>GODE ARCHITECTS</p> <p>10, rue de la Haule - 7 Ave. Ave. #210 St. John's, NL A1B 2X5 Tel: (709) 463-1100 - www.godearchitects.com</p>	<p>Scale:</p> <p>1:50</p>	<p>Sheet No.:</p> <p>112</p>	<p>Total Sheets:</p> <p>113</p>	<p>Project Name:</p> <p>Shore Park, La Route de la Haule</p>	<p>Project Description:</p> <p>Proposed Ground & First Floor Plans - Unit 2</p>
		No.	Date	Description																											
01	10/01/2021	Issue for tender																													
02	10/01/2021	Issue for tender																													
03	10/01/2021	Issue for tender																													
04	10/01/2021	Issue for tender																													
05	10/01/2021	Issue for tender																													
06	10/01/2021	Issue for tender																													
07	10/01/2021	Issue for tender																													
<p>Production Information</p>																															



Proposed Roof Plan - Unit 2

1:50



Proposed Second Floor Plan - Unit 2

1:50

Notes:
 The architect is not responsible for the construction of the building. The architect is not responsible for the construction of the building. The architect is not responsible for the construction of the building. The architect is not responsible for the construction of the building.

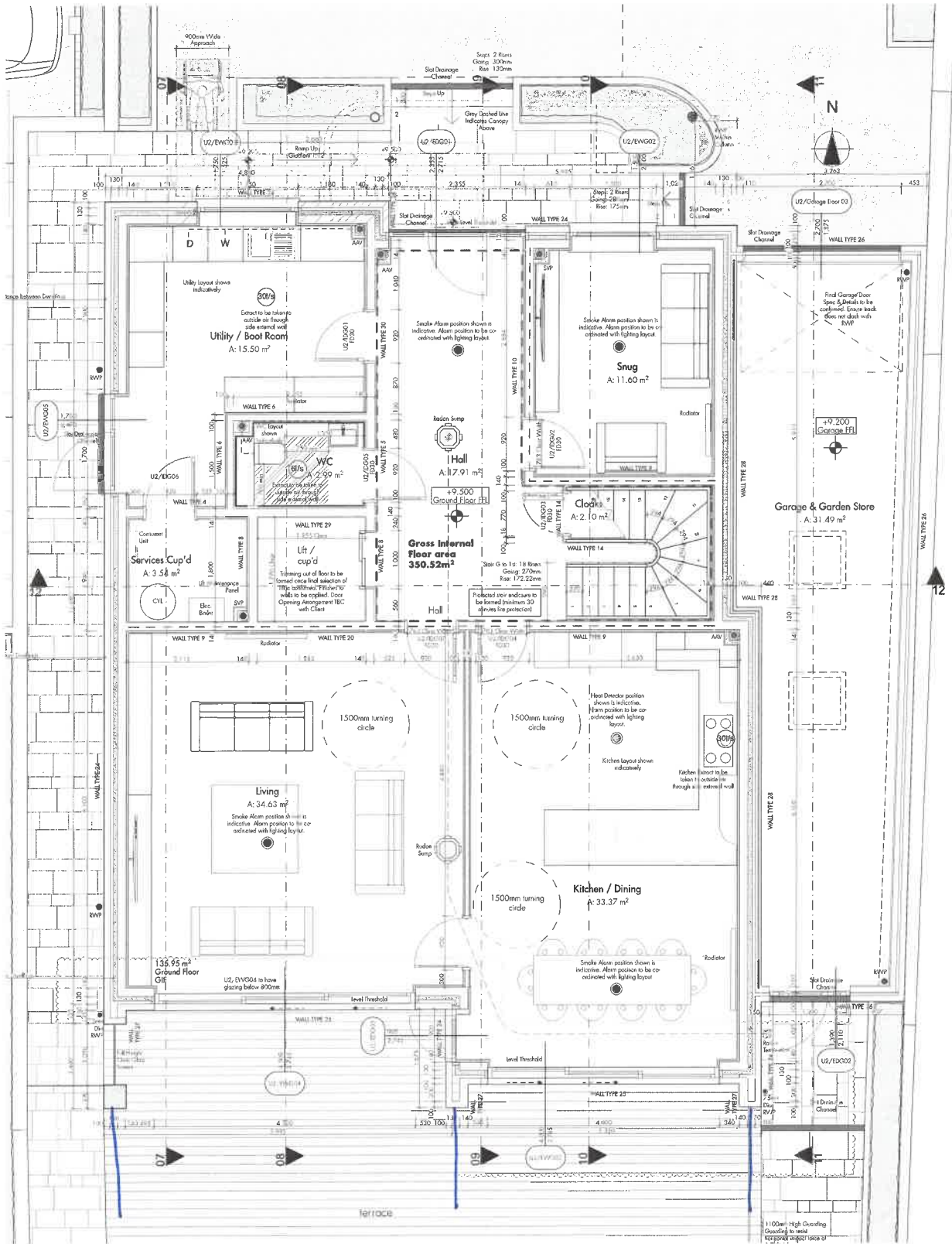
Rev.	Amendments	Date
01	Final	2023-10-10
02	Revised	2023-10-10
03	Revised	2023-10-10
04	Revised	2023-10-10

Rev.	Date

PRODUCTION
INFORMATION

GODEARCHITECTS
 14, Courville - 10, Rue de la Haule - 17000 - Jersey - 423 306
 Tel: 00354 66200 - www.godearchitects.com - info@godearchitects.com

Project: Shore Park, La Route de la Haule
 Drawing: Proposed Second Floor & Roof Plan - Unit 2
 Scale: 1:50
 Date: 2023-10-10
 Author: [Name]
 Checker: [Name]
 Title: [Title]



Proposed Ground Floor Plan - Unit 2

1:50

also top floor on R111

Notes
 This document and its design content is copyright ©. It shall be read in conjunction with all other associated project information including models, specifications, schedules and related construction documents. Do not scale from documents. All dimensions to be checked on site. Immediately report any discrepancies, errors or omissions on this document to the Originator. If in doubt ASK.

Rev	Amendments	Date
01	Revisions following client and contractor design review	15.03.2023
02	General Revisions Clouded in red following updates to wall, floor & roof construction.	11.04.2023
03	General Revisions Clouded in red. Position Information Release	14.04.2023
04	General Revisions Clouded in red. Floor levels indicated. Drawing Wall added at ground floor between Kitchen and Living Room.	14.06.2023
05	General Revisions Clouded in red. All Stair wall Headers amended to 150mm. Garage Doors amended. External works area garage door amended slightly to suit raised levels.	27.07.2023
06	General Revisions Clouded in red. Additional dimensions added near UZ/DPO7 next to stair and steel post. Also added dimension in red showing the setting out of the steel post next to the stair and steel post.	20.09.2023
07	General Revisions Clouded in red. Cladding on South Elevation on Ground and First floors omitted and replaced with render. Cladding arrangement amended.	20.10.2023

Rev	Amendments	Date
01	General Revisions Clouded in red following updates to wall, floor & roof construction.	15.03.2023
02	General Revisions Clouded in red. Position Information Release	11.04.2023
03	General Revisions Clouded in red. Floor levels indicated. Drawing Wall added at ground floor between Kitchen and Living Room.	14.04.2023
04	General Revisions Clouded in red. All Stair wall Headers amended to 150mm. Garage Doors amended. External works area garage door amended slightly to suit raised levels.	14.06.2023
05	General Revisions Clouded in red. Additional dimensions added near UZ/DPO7 next to stair and steel post. Also added dimension in red showing the setting out of the steel post next to the stair and steel post.	27.07.2023
06	General Revisions Clouded in red. Cladding on South Elevation on Ground and First floors omitted and replaced with render. Cladding arrangement amended.	20.09.2023
07	General Revisions Clouded in red. Cladding on South Elevation on Ground and First floors omitted and replaced with render. Cladding arrangement amended.	20.10.2023