

Item	Designation	Item	Designation
1	Cover cap, roof mounting	47	Slotted pan head screw DIN 7981-4.2x13
2	Cover, ceiling angle	48	Slotted pan head screw DIN 7981-4.2x25
3	Drop profile end cap, external part, left	49	Oval head wood screw DIN 7995-4.5x80
4	Drop profile end cap, external part, right	50	Logo, sign, right
5	Drop profile end cap, internal part, left	51	Mounting plate cover
6	Drop profile end cap, internal part, right	52	Mounting plate for rafter bracket
7	Arm stop	53	Mounting plate, left
8	Retention for side cap	54	O ring 3x17 mm
9	Stop cam, housing floor profile	55	Knurled nut with internal thread D6x25 mm
10	Stop cam	56	Threaded nut D9.5x9 mm M4
11	End roller, tilting member	57	Washer DIN 1052-14-St-Zn
12	Tensioning rope retainer	58	Washer DIN 9021-13-A2
13	Retaining plate	59	Washer DIN 125A-13-A2
14	Drop profile	60	Washer DIN 125A-8.4-A2
15	LongLife Arm L belt arm with arm bracket on left	61	Plate dowel DIN 1052-c2 62/12
16	LongLife Arm L belt arm with arm bracket on right	62	Carriage 20x5 mm L15 M6
17	Drive	63	Hexagonal nut DIN 934-M12
18	Clamping slider	64	Hexagonal nut DIN 934-M6
19	Faceplate for rain drain	65	Hexagonal nut DIN 934-M8
20	Reveal profile	66	Hex socket head screw DIN 933-M12x20
21	Brush, self-adhesive, 164 mm	67	Hex socket head screw DIN 933-M12x30
22	Roof-mounted stop cam	68	Hex socket head screw DIN 933-M12x35
23	Rafter bracket, left	69	Hex socket head screw DIN 933-M12x40
24	Rafter plate, left	70	Hex socket head screw DIN 933-M12x140
25	Ceiling bracket	71	Side cap
26	Diagonal connector, left	72	Side cap, 298 mm
27	Diagonal connector, right	73	Side part A
28	Sealing profile, 8 mm	74	Side part B
29	Spacer plate	75	Countersunk self-tapping screw DIN 7982-ST4.2x13
30	Stainless steel cable Ø4 mm	76	Countersunk self-tapping screw DIN 7982-ST4.2x32
31	Buffer	77	Countersunk hex head screw DIN 7991-M5x25
32	Electrical components holder	78	Countersunk hex head screw DIN 7991-M6x25
33	Circlip DIN 127 B12	79	Support profile
34	Grub screw DIN913-M4x10-A2	80	Support profile clamp
35	Grub screw DIN913-M4x20-A2	81	Fabric dowel
36	Grub screw DIN913-M4x8-A2	82	Optinut roller tube 69x1.25 mm
37	Grub screw DIN913-M5x10-A2	83	Roller tube insert Optinut 69 black
38	Grub screw DIN913-M8x50-A2	84	Roller tube bracket, left
39	Threaded terminal M8x40 Special	85	Roller tube bracket, right
40	Glide profile	86	Wall bracket, 130 mm
41	Crosshead	87	Hex. socket head cap screw DIN 6912 M6x12
42	Hard cord edge, 4 mm	88	Hex. socket head cap screw DIN 6912 M8x25
43	Hard cord edge, 5.2 mm	89	Hex. socket head cap screw DIN 912 M4x25
44	Housing floor profile	90	Hex. socket head cap screw DIN 912 M5x20
45	Housing top profile	91	Hex. socket head cap screw DIN 912 M6x25
46	Clamp profile member 105 mm		

10 Exploded drawing - Zenara

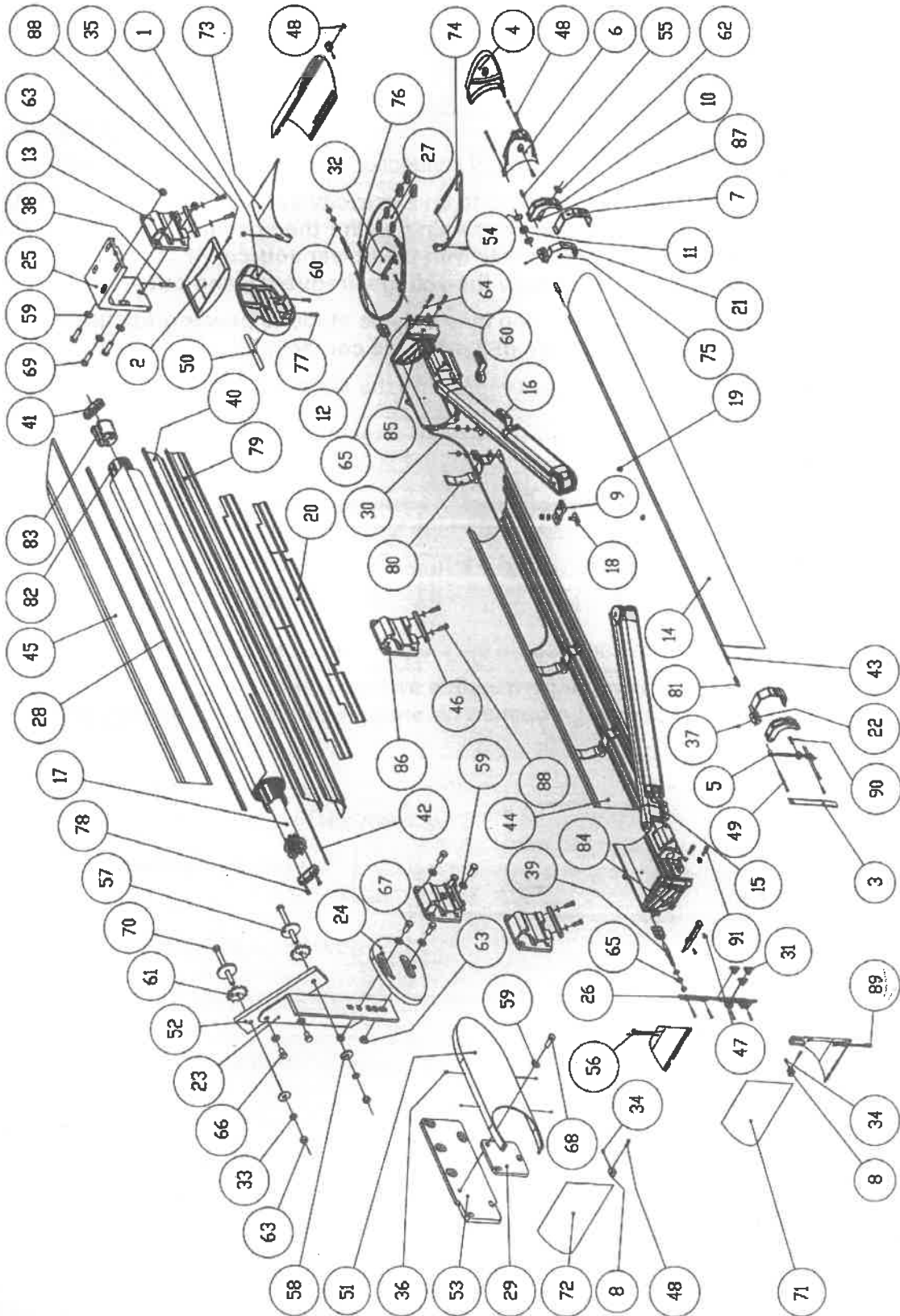


Figure 12: Exploded drawing - Zenara