

HIRE CONTRACT DELIVERY

Company Name: CP Interiors
Site: Matalan
Liberty Wharf
St Helier
Contact Name: Maud Zimmer
Ref No: H44905

Date Delivered: 05/03/2021 7:50
Delivered By: Dimitar

Notes:

<u>Stock No</u>	<u>Description</u>	<u>Qty</u>
TWS042	Tower Single Width 4.2M Platform Height	1
MANUAL	Manual	1
TW2RSWSF	Tower 2 Rung Single Width Span Frame	1
TW2RSWLF	Tower 2 Rung Single Width Ladder Frame	1
TWDLC	Tower Dual Locking Castor	4
TWALH	Tower Adjustable Leg	4
TWSWAT	Tower Alloy Toe Board Set Single Width	1
TW4RSWSF	Tower 4 Rung Single Width Span Frame	2
TW4RSWLF	Tower 4 Rung Single Width Ladder Frame	2
TWHD	Tower 1.8M Hatch Deck	2
TW18HB	Tower 1.8 M Horizontal Brace Ribbed	10
TW21DB	Tower 2.1M Diagonal Brace Smooth	7
TWSS	Tower Standard Stabiliser	4

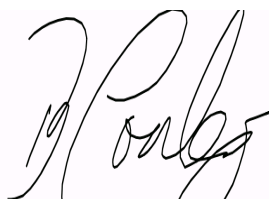
All equipment remains at all times the property of 4 Hire Limited (The Owner) as of our Terms and Conditions available on request, or they can be viewed at www.4groupci.com <<http://www.4groupci.com>>

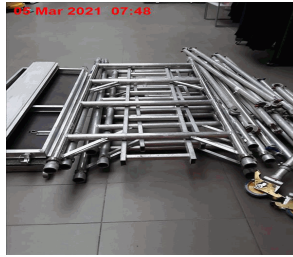
Please Note it is the Hirers Responsibility to insure the equipment

It Is the Hirers Responsibility to Ensure That All Persons Operating This Equipment Are Trained, Competent & Authorised As Required By Law

Signed By: Brien

Signature:





All equipment remains at all times the property of 4 Hire Limited (The Owner) as of our Terms and Conditions available on request, or they can be viewed at www.4groupci.com <<http://www.4groupci.com>>

Please Note it is the Hirers Responsibility to insure the equipment

It Is the Hirers Responsibility to Ensure That All Persons Operating This Equipment Are Trained, Competent & Authorised As Required By Law

Signed By: Brien

Signature:

