



Creating healthy spaces

NV RENSON • Sunprotection-Screens SA

Delivered
on site by

RECEIVED

19 MAR 2021

SCANNED

fetch &
Karrie

Delivery

Delivery note date	11.02.2021	CP Interiors
Delivery number	80045159	St. Saviour
Customer number	1001334	28 Rue des Pres. Tr. Est.
Your VAT number		JE2 7QN JERSEY
Order number	284	JERSEY
Project reference	SO10556 Mbrin	
Order reference	Webid 1539983	

Incoterms	DAP Jersey	Pick up address	Customer address
Total gross weight	947,8 KG	Renson Sunprotection-Screens NV Prijfels Polydor Rensonstraat 1 B-9750 KRUISEM	CP Interiors St. Saviour 28 Rue des Pres. Tr. Est. JE2 7QN JERSEY JERSEY

Detail

Handling Unit n°	Quantity	HU Type
1000015347 - 1000015873 - 1000015881	3	CRATE WOOD 4236X773X7 CRATE WOOD 6136X773X7

HU number	Gross weight	Dimensions (l * l * h)	Quantity
Content HU = colli n°	Material number	Description	
1000015347	354,5 KG	6.136M*0.773M*0.747M	
8900008224	90000284001000-004	KADERPROFIEL P2	1
8900008229	90000284001000-001	KADERPROFIEL P1	1
8900008230	90000284001000-006	KADERPROFIEL S2	1
8900008231	90000284001000-005	KADERPROFIEL S1	1
8900008263	90000284001000-009	AANDRIJFLAT	1
1000015873	282,4 KG	4.236M*0.773M*0.747M	
8900007868	90000284001000-007	LAMEL_STD	2
8900007873	90000284001000-007	LAMEL_STD	1
8900007876	90000284001000-011	VASTE_LAMEL_LAAG	1
8900007877	90000284001000-010	VASTE_LAMEL_HOOG	1
8900007878	90000284001000-008	LAMEL_LED	2



Creating healthy spaces

NV RENSON • Sunprotection-Screens SA

Delivery

80045159

11.02.2021

8900007879	90000284001000-008	LAMEL_LED	1
8900008114	90000284001000-136	FIELDBOX ELECTRONICS	1
8900008115	90000284001000-135	FIELDBOX COMPONENTS	1
8900008237	90000284001000-014	VOETPLAAT_2B	1
8900008238	90000284001000-016	KOLOM_2B	1
8900008239	90000284001000-012	VOETPLAAT_2A	1
8900008240	90000284001000-015	KOLOM_2A	1
8900008241	90000284001000-013	VOETPLAAT_1B	1
8900008242	90000284001000-002	KOLOM_1A	1
8900008243	90000284001000-003	VOETPLAAT_1A	1
8900008245	90000284001000-017	KOLOM_1B	1
8900008247	90000284001000-020	GELEIDERPAKKET_1A	1
8900008248	90000284001000-019	GELEIDERPAKKET_2A	1
8900008249	90000284001000-018	GELEIDERPAKKET_2B	1
8900008250	90000284001000-021	GELEIDERPAKKET_1B	1
8900008251	90000284001000-137	WATER DIFFUSERS	1
1000015881	310,8 KG	4.236M*0.773M*0.747M	
8900007863	90000284001000-007	LAMEL_STD	2
8900007864	90000284001000-007	LAMEL_STD	2
8900007865	90000284001000-007	LAMEL_STD	2
8900007866	90000284001000-007	LAMEL_STD	2
8900007867	90000284001000-007	LAMEL_STD	2
8900007869	90000284001000-007	LAMEL_STD	2
8900007870	90000284001000-007	LAMEL_STD	2
8900007871	90000284001000-007	LAMEL_STD	2
8900007872	90000284001000-007	LAMEL_STD	2
8900007874	90000284001000-032	LAMEL_MOTOR	1
8900007875	90000284001000-026	LAMEL_SECURING	1

For questions or remarks regarding this document, please send an email to anastasiia.nikolaeva@renson.be



Creating healthy spaces

RENSON® Fabrications LTD

CP Interiors
Heather Veal
28 Rue des Pres. Tr. Est.
JE JE2 7QN Jersey
TEL: 1534768141

Subject : Webid=1539983 Quote
Adjudication : /00/00 WEB
Your ref. : SO10556 Morin
Our ref. : 20/100584/04PG 1 DRIVE Maidstone, 2/11/20

Dear,

Thank you for using e-REPS when sending us your inquiry.
Please note that this document was automatically generated.

CAMI Camargue® Single-part

- Seaside Quality A

- Colour blades: STR 0010 Frame : STR 0008
- STR 0010 - 029/10797 - Bianco 02 (ca. RAL 9010) Fine texture
- STR 0008 - 029/60740 - Sepia Brown Fine texture Metallic
- Passage height 2300 mm
- Motorposition : P1
- Motor control : RTS
- Blade rotation : Sunprotection
- Corner 1A : Column at the corner
- Fixation holes : WITH mounting holes
- Mounting base : Invisible mounting base
- Water drainage : WITH water drainage
- Height water drainage : Drainage tube at 66 mm above ground level
- Corner 1B : Column at the corner
- Fixation holes : WITH mounting holes
- Mounting base : Invisible mounting base
- Water drainage : WITH water drainage
- Height water drainage : Drainage tube at 66 mm above ground level
- Corner 2A : Column at the corner
- Fixation holes : WITH mounting holes
- Mounting base : Invisible mounting base
- Water drainage : WITH water drainage
- Height water drainage : Drainage tube at 66 mm above ground level
- Corner 2B : Column at the corner
- Fixation holes : WITH mounting holes
- Mounting base : Invisible mounting base
- Water drainage : WITH water drainage
- Height water drainage : Drainage tube at 66 mm above ground level
- Building of the beam P1 : Freestanding
- Building of the beam P2 : Freestanding
- Building of the beam S1 : Freestanding
- Building of the beam S2 : Freestanding
- Lineo LED : Lineo LED
- Number of LED blades : 3
- Light colour Lineo LED : Warm white light (3000K)
- UpDown LED : UpDown LED
- Updown LED C1 : S1+S2
- LED Up S1 : RGB
- LED Up S2 : RGB
- Handheld transmitters : G6002774 - Somfy Telis 16 Pure white
- Exhibition model : No
- Seaside Quality A

.. / ..

RENSON® Fabrications LTD

Fairfax Units 1-5 • Bircholt Road • Parkwood Industrial Estate • Maidstone • Kent ME15 9SF
Tel: +44 (0) 1622/754123 • Fax: +44 (0)1622/689478 • Fax: + 44 (0)1622/689479 • info@rensonuk.net • www.renson.eu
Company Reg. No. 2993317 • Registered Office Maidstone • VAT Reg. No. GB 619 474 809



Creating healthy spaces

RENSON® Fabrications LTD

CP Interiors
Heather Veal
28 Rue des Pres Tr. Est.
JE JE2 7QN Jersey
TEL: 1534768141

Subject : Webid=1539983 Quote

Adjudication : /00/00 WEB
Your ref. : SO10556 Morin
Our ref. : 20/100584/04PG 2 DRIVE Maidstone, 2/11/20

.Camargue® Single-part (1) = 13.443,17 GBP gross
+Corner 1A = 409,41 GBP gross
+Corner 1B = 409,41 GBP gross
+Corner 2A = 409,41 GBP gross
+Corner 2B = 409,41 GBP gross
+Number of LED blades = 2.361,00 GBP gross
+UpDown LED = 2.030,31 GBP gross
+Handheld transmitters = 202,09 GBP gross

Height Sizes quant Nett pr.EA.
.0mm 3800mm S 6200mm P 1 11.804,53 GBP.

TOTAL QUOTATION AMOUNT : 11.804,53 GBP

These prices are valid for orders based on this quote only
and placed as 1 order. Any alterations require
a new calculation.
This quote is valid until: 2 months.

Deliverytime : General Terms and Conditions.
See www.renson.eu/tac-ventilation.
Transport costs : General transport conditions.
see www.renson-customers.com.
Payment condition : see terms and conditions

Should you require additional information, please do not hesitate
to contact us. This document has been automatically generated.

Yours faithfully,
Renson Fabrication

RENSON® Fabrications LTD

Fairfax Units 1-5 • Bircholt Road • Parkwood Industrial Estate • Maidstone • Kent ME15 9SF
Tel: +44 (0) 1622/754123 • Fax: +44 (0)1622/689478 • Fax: + 44 (0)1622/689479 • info@rensonuk.net • www.renson.eu
Company Reg. No. 2993317 • Registered Office Maidstone • VAT Reg. No. GB 619 474 809

del = 26.02.21

Order request CP Interiors

SO 10407

Customer	CP Interiors	External Code	RENSON.134872
Your reference	SO10856 Mbrin	Web ID	1539983
File number	OFF.O.20.100584.4	Creation date	05-10-2020 13:13
Terms of delivery	Free house	Requested by	Leeana Taft
Desired departure date		Requested on	02-11-2020 16:01

Invoice Address CP Interiors (00000), 28 Rue des Pres. Tr. Est. St. Saviour - JE2 7QN Jersey

Delivery Address CP Interiors (00000), 28 Rue des Pres. Tr. Est. St. Saviour - JE JE2 7QN Jersey

Project address

Number	Description
	<p>Line number: 1 Product: Camargue Line Type: Camargue® Single-part GENERAL SPECIFICATIONS Span C1: 3800 mm Pivot: 6200 mm Passage height: 2300 mm Motorposition C1: P1 Blade rotation C1: Sunprotection Exhibition model: No COLOURS Colour framework and columns: Textured colours Colour code: STR0008.Sepia Brown Fine texture Metallic Description: Sepia Brown Fine texture Metallic Powder code: 029/60740 Colour of blades: Textured colours Colour code: STR0010.Bianco 02 (ca. RAL 9010) Fine texture Description: Bianco 02 (ca. RAL 9010) Fine texture Powder code: 029/10797 Pretreatment: Seaside Quality A CORNER 1A Corner 1A: Column at the corner Fixation holes for the mounting base: WITH mounting holes Mounting base: Invisible mounting base Water drainage: WITH water drainage Direction of water drainage: pivot Height water drainage: Drainage tube at 66 mm above ground level CORNER 1B Corner 1B: Column at the corner Fixation holes for the mounting base: WITH mounting holes Mounting base: Invisible mounting base Water drainage: WITH water drainage Direction of water drainage: pivot Height water drainage: Drainage tube at 66 mm above ground level CORNER 2A Corner 2A: Column at the corner</p>

1

Fixation holes for the mounting base: WITH mounting holes

Mounting base: Invisible mounting base

Water drainage: WITH water drainage

Direction of water drainage: pivot

Height water drainage: Drainage tube at 66 mm above ground level

CORNER 2B

Corner 2B: Column at the corner

Fixation holes for the mounting base: WITH mounting holes

Mounting base: Invisible mounting base

Water drainage: WITH water drainage

Direction of water drainage: pivot

Height water drainage: Drainage tube at 66 mm above ground level

BEAM P1/C1

Building of the beam P1: Freestanding

Intermediate column: WITHOUT intermediate column

BEAM P2/C1

Building of the beam P2: Freestanding

Intermediate column: WITHOUT intermediate column

BEAM S1/C1

Building of the beam S1: Freestanding

Intermediate column: WITHOUT intermediate column

BEAM S2/C1

Building of the beam S2: Freestanding

Intermediate column: WITHOUT intermediate column

FIXSCREEN

LINIUS/LINARTE

LOGGIA

GLASS SLIDING PANELS

COMFORT AND DESIGN

LIGHTING (LED)

Lineo LED C1: Lineo LED

Number of LED blades C1: 3

Light colour Lineo LED C1: Warm white light (3000K)

Updown LED C1: S1+S2

LED Up S1: RGB

LED Down S1: No LED

LED Up S2: RGB

LED Down S2: No LED

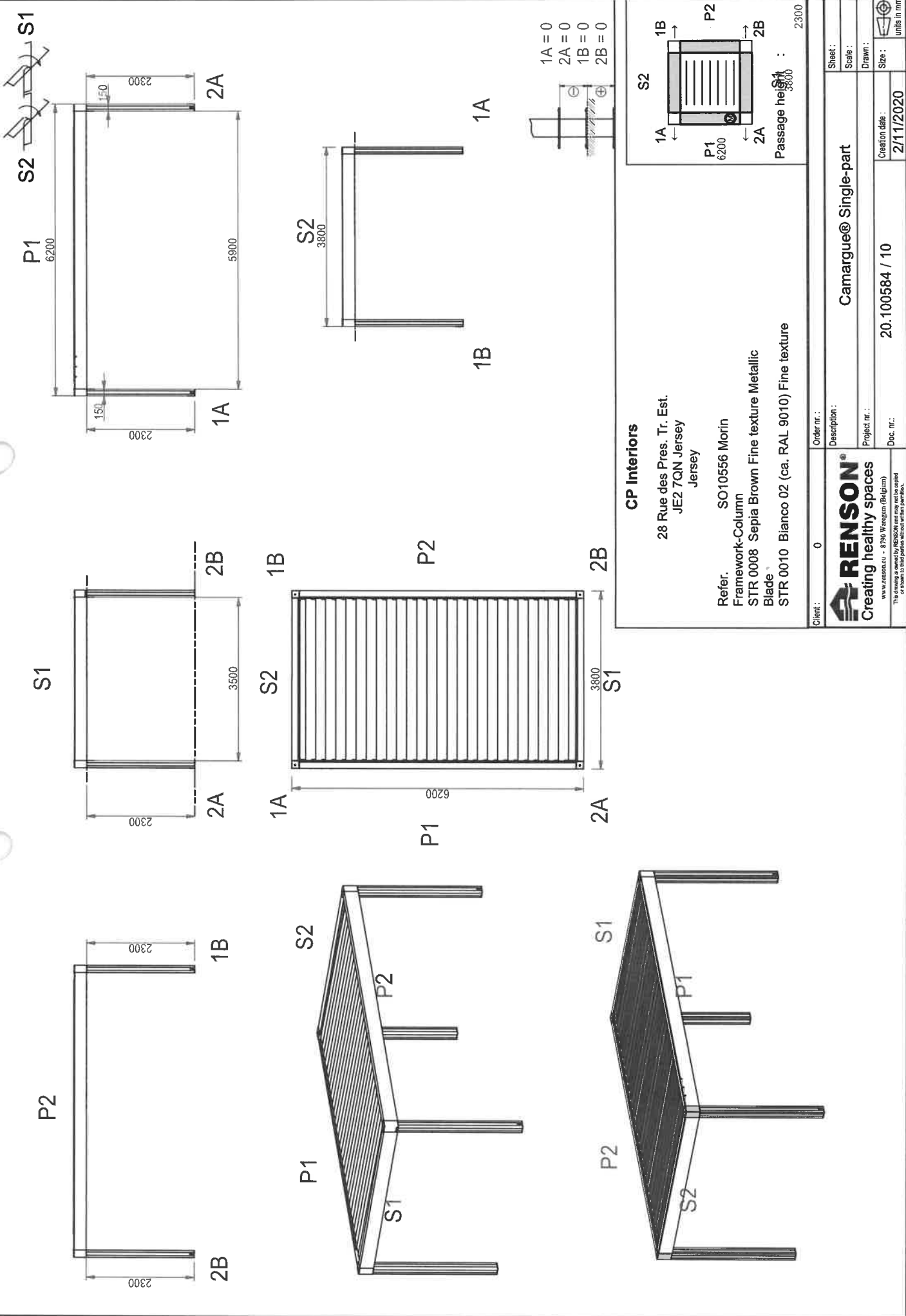
OUTDOOR CURTAINS

AUTOMATION

Voltage: 230V

Motor control C1: RTS

Handheld transmitters C1: G6002774 - Somfy Telis 16 Pure white

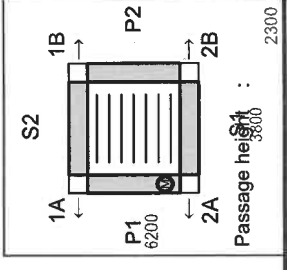


1A = 0
 2A = 0
 1B = 0
 2B = 0

CP Interiors

28 Rue des Pres. Tr. Est.
 JE2 7QN Jersey
 Jersey

Refer. SO10556 Morin
 Framework-Column
 STR 0008 Sepia Brown Fine texture Metallic
 Blade®
 STR 0010 Bianco 02 (ca. RAL 9010) Fine texture



Client :	0
Order nr. :	
Description :	Camargue® Single-part
Project nr. :	20.100584 / 10
Doc. nr. :	21/1/2020
Creation date :	
Scale :	
Drawn :	
Size :	Units in mm



20100584_05_10_K3514780_Camargue

