

FAIRFIELD

10/10/2019

Revision:

DELIVERY

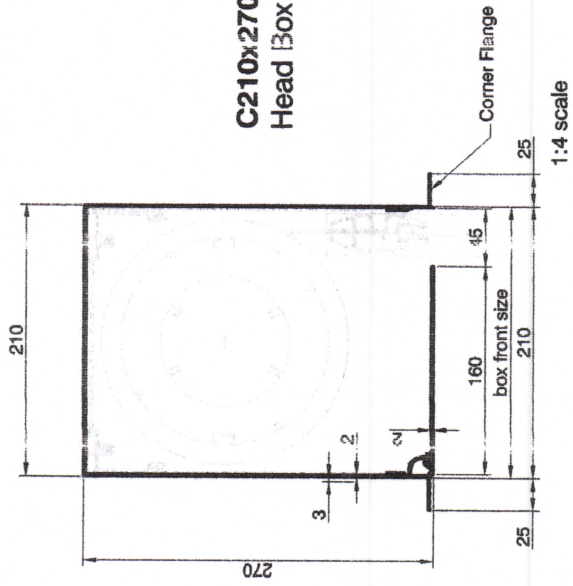
Blind ref.	Room Name	Window/Door Ref	Orientation	Type	Side Track req'd	Electric	Lutron operation	Width	Drop	Qty of window coverings in opening	Product	Pocket dimensions	lengths of profiles supplied
BLIND01	Living/Kitchen/Dining	W10	West	Translucent	NO	YES	YES	3000		2	Sivola QS Roller 100	Recess profile 130mm x 130mm with double flanges	1 @ 3m plus end caps
BLIND02	Living/Kitchen/Dining	D04	South	Translucent	NO	YES	YES	9600		4	Sivola QS Roller 100	double recess profile pocket 260mm deep x 130mm high	2 @ 4.8m plus end caps
BLIND02	Living/Kitchen/Dining-second blind	D04	South	Dim out	NO	YES	YES	9600		4	Sivola QS Roller 100		
BLIND04	Master Bedroom	D05	South	Blackout	YES	YES		5360	2500	1	Zip 200 gravity drop Somfy Hard wired	BLIND WITH RECESSED SIDE TRACK, Blindspace profiles 210mm deep x 270mm high. Side box 210 x 50. seedrawing C210 x 270	1 @ 5.35m & 1 @ 3m head profiles, 4 @ 2.5m side channels plus end caps
BLIND05	Master Bedroom	D06	East	Blackout	YES	YES		3000	2500	1	Zip 200 gravity drop Somfy Hard wired		
CURTAIN ref.	Room Name	Window/Door Ref	Orientation	Type	Silent Gliss Track req'd	Electric	Lutron operation	Width	Drop				
CURT01	Master Bedroom	D05	South/East	Translucent	YES	YES	YES	5360		1	Silent Gliss 5600 electric	Reese profile Plus end caps for SG electric operation	2 lengths Plus ends caps for electric op
CURT01A	Master Bedroom	D06	South/East	Translucent	YES	YES	YES	3270		1	Silent Gliss 5600 electric		
CURT02	Guest Bedroom 1	W09	West	Translucent	YES	NO	NO	1500		1	Silent Gliss 5600 manual	reese Profile (manual op. no end required for electric motor or return)	
CURT03	Guest Bedroom 1	D02	South	Translucent	YES	NO	NO	4960		1	Silent Gliss 5600 manual	reese Profile (manual op. no end required for electric motor or return)	2 lengths (no end caps - manual)
CURT04	Guest Bedroom 2	D03	South	Translucent	YES	NO	NO	4860		1	Silent Gliss 5600 manual	reese Profile (manual op. no end required for electric motor or return)	
CURT05	Living Room	D04	South	Blackout	YES	NO	N/A	470		2	Silent Gliss 6243 recessed track	Fixed feature curtains (stationary)	none

RECEIVED

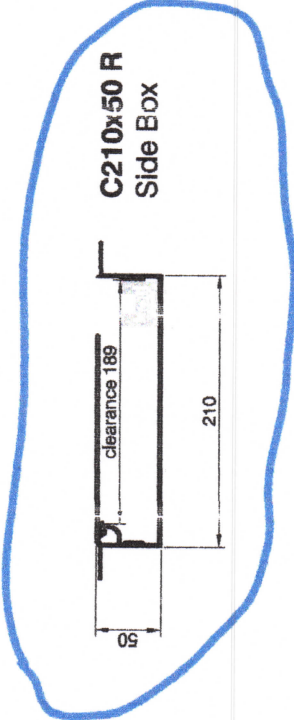
unchecked

John

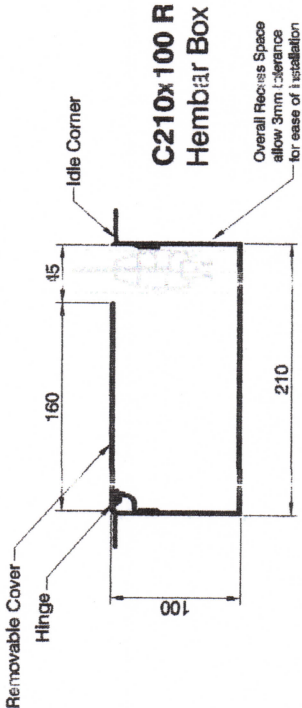
Blindspace® C210x270 & C210x100 & C210x50 for SHY 200/160/240V



**C210x270 R
Head Box**



**C210x50 R
Side Box**

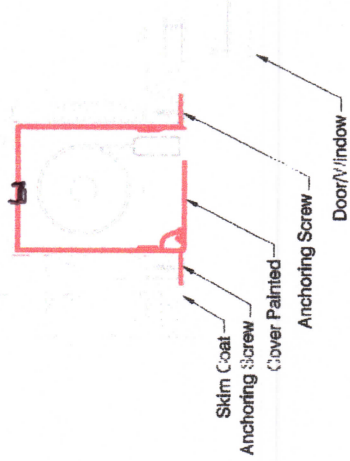


**C210x100 R
Hembar Box**

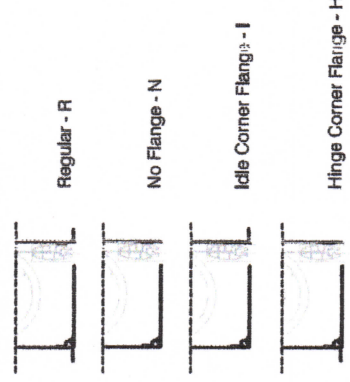
Overall Recess Space allow 3mm tolerance for ease of installation

SAMPLE INSTALLATION DETAIL

INSTALLATION NOTE:
Make sure there is space for window/door handles. Boxes and blinds can also be mirrored in vertical plane for opening towards the room.



SKIRM COAT FLANGES LOCATION OPTIONS



Product: Blindspace C210x270
Description: Finished aluminium boxes and covers designed to conceal window blinds.

Material: Anodized Aluminium, grade: 6063 T6
Front plate: EN 6063 T6
Back plate: EN AW-1050A
H: 1.5/24

Finishes:
- R: finished for site painting
- I: finished for site painting
- H: finished to RAL colour

Blind sizes: Blind Sizes to fit inside the box
SHY 200/160/240V
H: 175mm hem bar
R: side size depending on fabric and hembar selection.
C: setting width max: 600mm
N: setting height max: 970mm
I: J: area: 500cm²

Installation: Boxes should be fixed on both sides. The finished plaster level should be flush with chamfered edge. Anchoring countersink screws through skirm coat flanges are recommended.

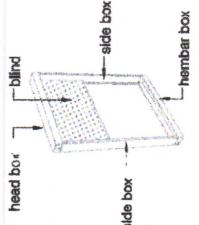
Drawing: Custom Blindspace Boxes
C: 0x270
for Window Blinds

Item name: C: 10x270, C210x50, C210x100

Date: September, 2018

Notes: Dimensions in mm
Do not scale from drawing

Drawn by: M. Kozak, B. Dziesza
Approved: A. Sundelin
Revision: R1: Initial design
R2: Add plastic hardware update
R3: Final design update

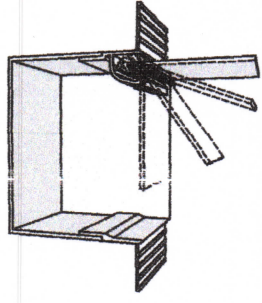


PRODUCT REFERENCE

product series: Blindspace C210x270 R
box front size: depth of the box

Top down configuration of blinds is shown. Bottom up configuration is also possible. For bottom up configuration the frame layout should be mirrored in horizontal plane.

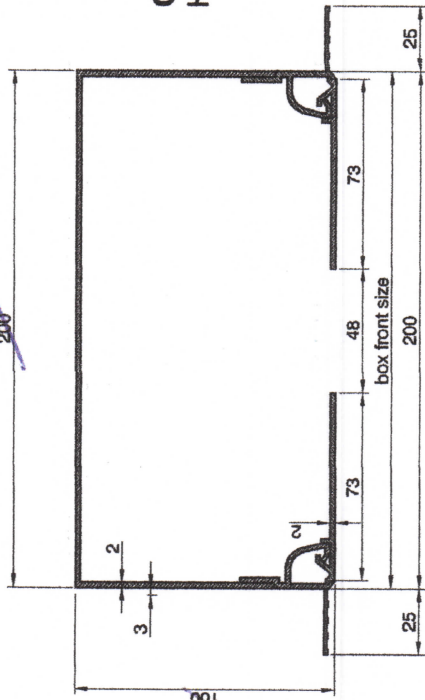
FRAME LAYOUT OPTIONS



Print date: 2018-09-27
Print file:
Page size: 130 AS 40x257
Remarks: FIVE

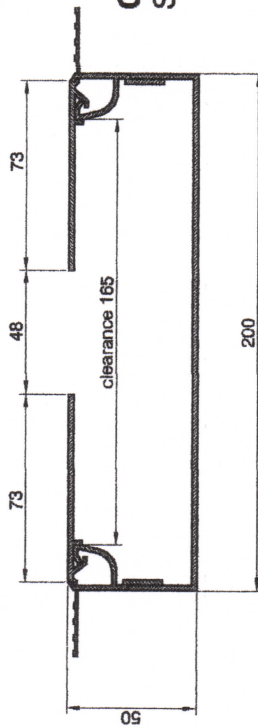
Blindspace® C200x100 & C200x50 for Double Medium Standard Roller Blind

260
200

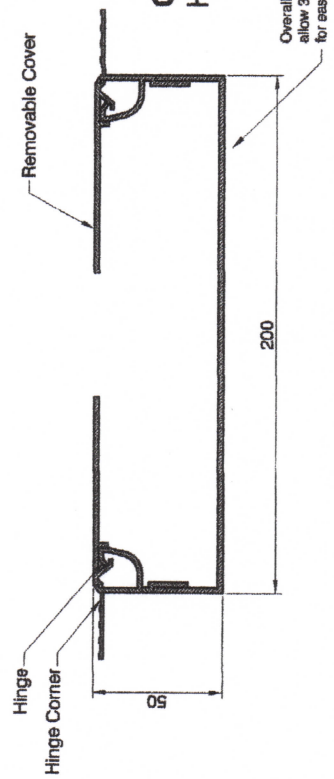


C200x100 R
Head Box

1:2 scale



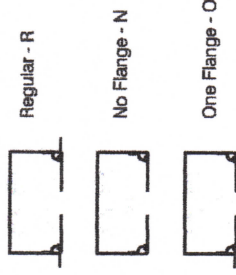
C200x50 R
Side Box



C200x50 R
Hembar Box

SAMPLE INSTALLATION DETAIL

INSTALLATION NOTE:
Make sure there is space for window/door handles. Boxes and blinds can also be mirrored in vertical plane for opening towards the room.

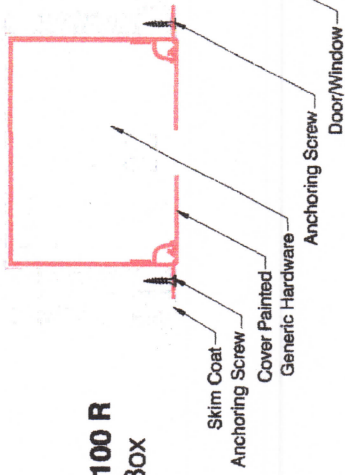


SKIM COAT FLANGES LOCATION OPTIONS

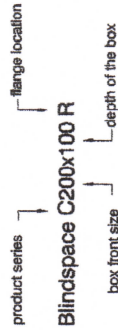
Regular - R

No Flange - N

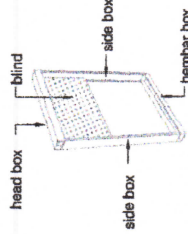
One Flange - O



PRODUCT REFERENCE

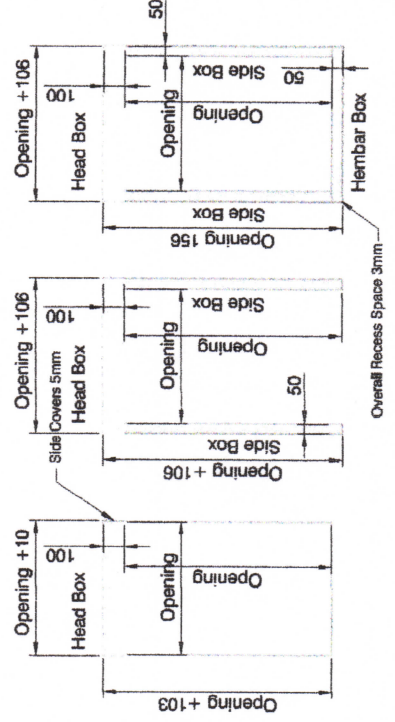


product series
Blindspace C200x100 R
box front size
depth of the box

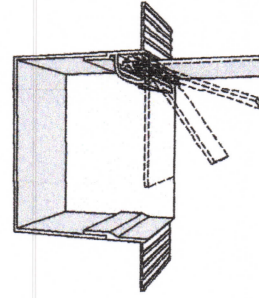


Top down configuration of blinds is shown. Bottom up configuration is also possible. For bottom up configuration the frame layout should be mirrored in horizontal plane.

FRAME LAYOUT OPTIONS



Product	Blindspace C200x100
Description	Recessed aluminum boxes and covers designed to conceal window blinds.
Material	Anodized Aluminum, grade: front plate: EN 6063 T6 back plate: EN AW-1050A H14/H24
Finishes	- Unfinished for site painting - Primed for site painting - Pre-finished toRAL colour
Blind sizes	Blind Sizes to fit inside the box: Double Medium Standard Roller Blind Exact size depending on fabric and hembar selection. Opening Width max: 2800mm Opening Height max: 2800mm
Installation	Boxes should be fixed on both sides. The finished plaster level should be flush with chamfered edge. Anchoring countersink screws through skim coat flanges are recommended.
Drawing	Custom Blindspace Boxes C200x100 for Window Blinds
Item name	C200x100, C200x50
Date	January, 2019
Notes	Dimensions in mm Do not scale from drawing
Drawn by	M. Kozak, B. Dziszka
Approved	A. Sundelin
Revision	R-0: first issue R-1: sample installation detail

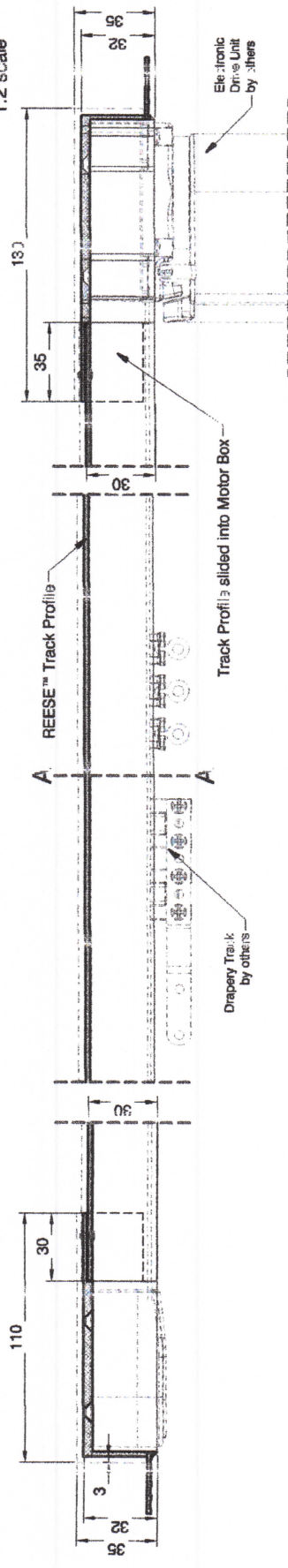
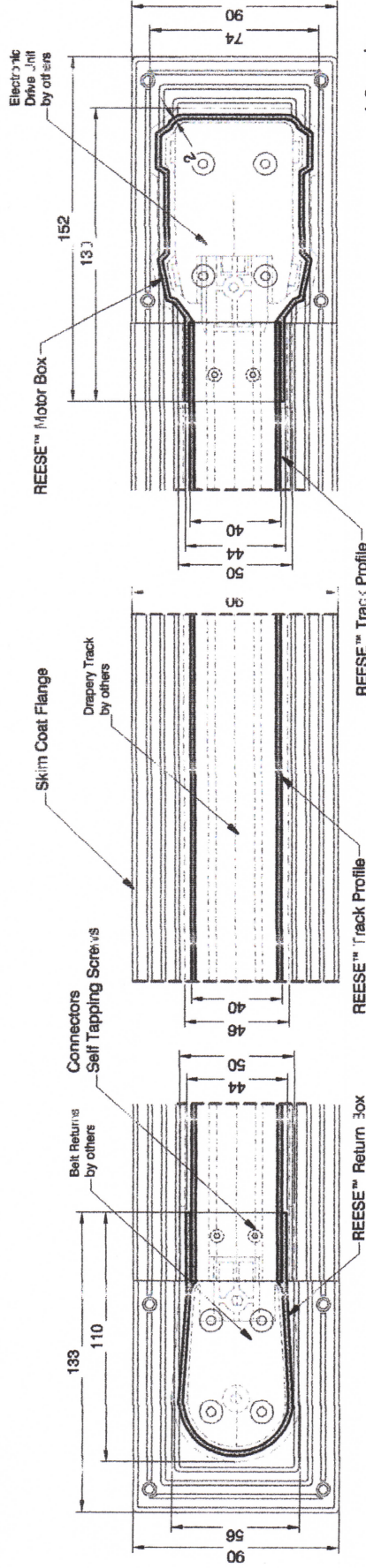


Print date	2019-01-25
Print file	blindspace C200x100 boxes with double medium set color: bls_c200_100.dwg
Page size	ISO A3 420x297
Remarks	

BL'NDSPACE®

Product	Recess LIF
Description	Recessed profiles to house curtain tracks
Material	Upper: Anodized Aluminium, grade EN 6060 T66 Ei 0 cap: Plastic POM Polymer
Finishes	White to be plastered in and sketched at site to match ceiling.
Track sizes	Curtain Tracks Sizes to fit inside the profiles: see available for third party track profile: W35x427

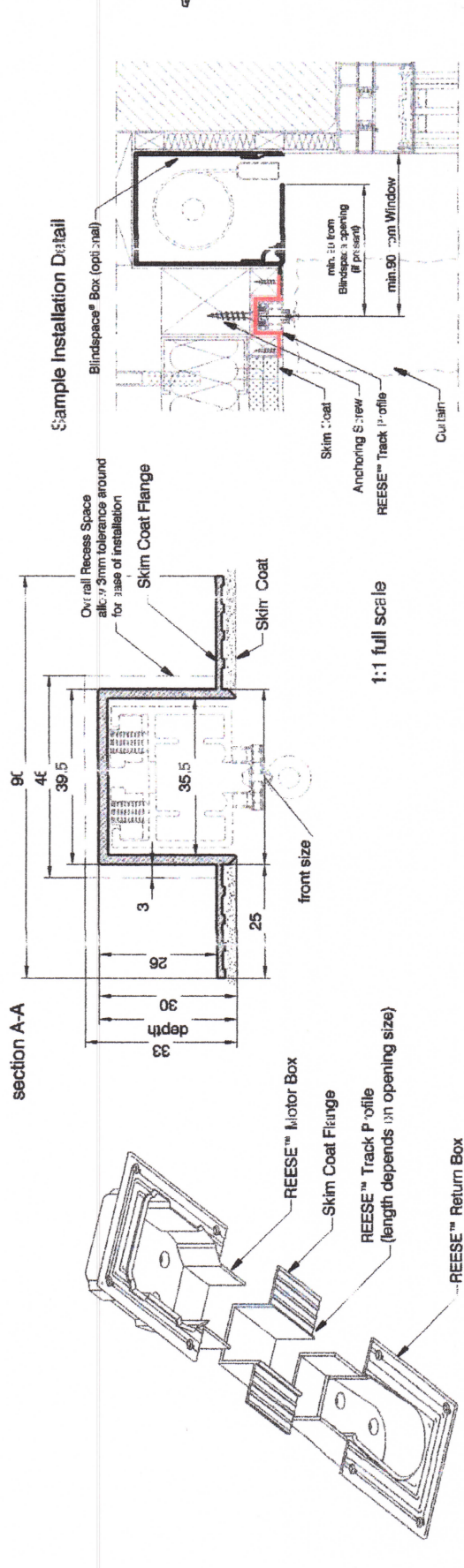
Installation	Anchoring with countersink screws through profile walls near the center of profiles are recommended. The finished plaster level should be flush with chamfered edge.
Drawing	Standard Recess Track Profile LIF
Item name	R 1F, LMB1F, LRB1F
Notes	D: dimensions in mm Do not scale from drawing
Drawn by	M. Kozak
Revision	A. Sundelin
date:	2018-04-10
By: release	2018-04-17
By: drawing change	



REESE™ Return Box
item: LRE1F

REESE™ Track Profile
item: RT1F

REESE™ Motor Box
item: LMB1F



Sample Installation Detail

REESE™ Motor Box
item: LMB1F

REESE™ Track Profile
item: RT1F

REESE™ Return Box
item: LRE1F