

PLAN OF PROPOSED AWNING ON APARTMENT NO.17

**PROPOSED AWNING.**  
TO MATCH AWNINGS APPROVED  
ON NEIGHBOURING APARTMENTS.  
APPLICATION REF. P/2011/0577

POWDER COATED ALUMINIUM  
RETRACTABLE  
AWNING OVER TERRACE  
WINDOWS / DOORS.

**Product description**

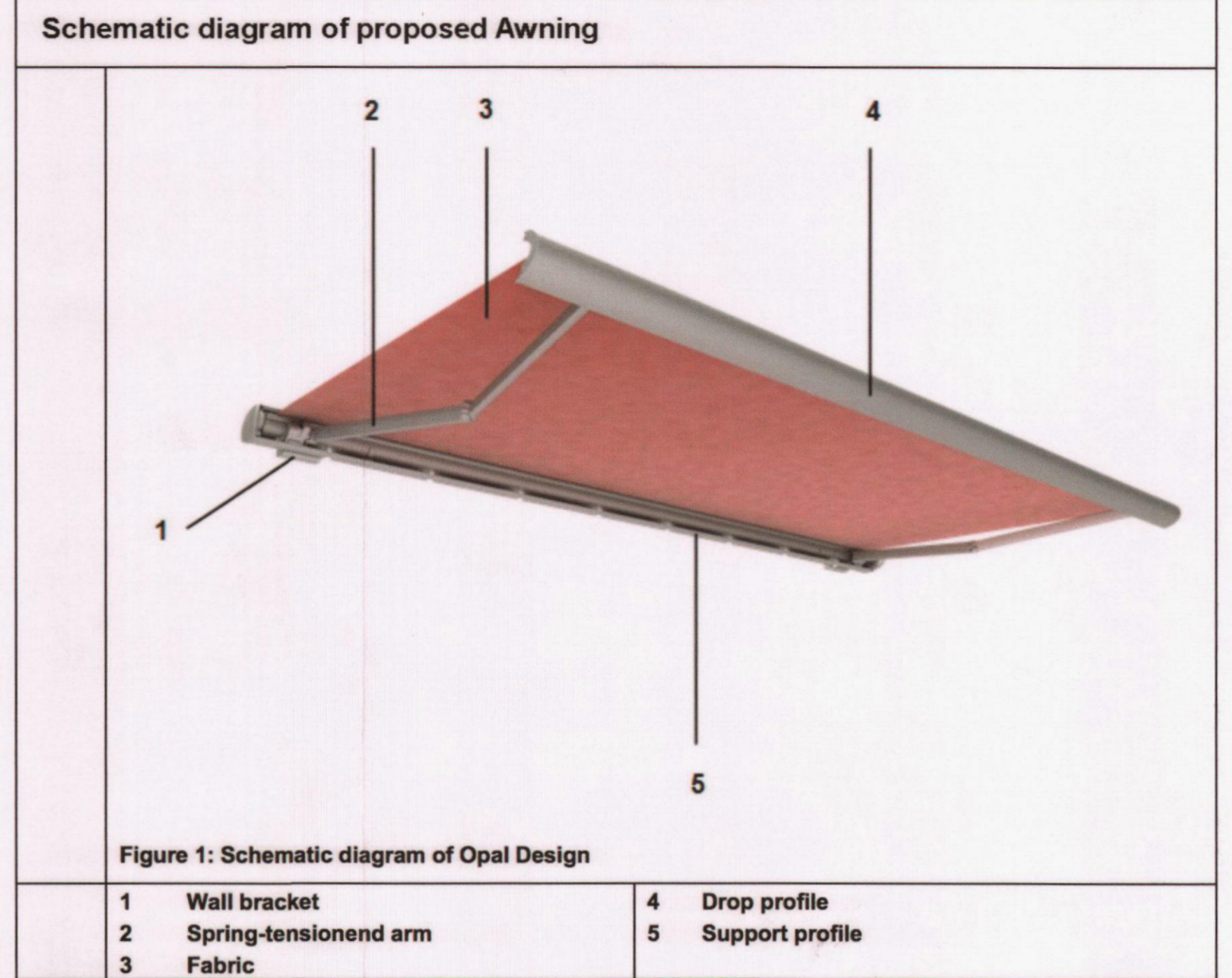


Figure 1: Schematic diagram of Opal Design

1	Wall bracket	4	Drop profile
2	Spring-tensioned arm	5	Support profile
3	Fabric		

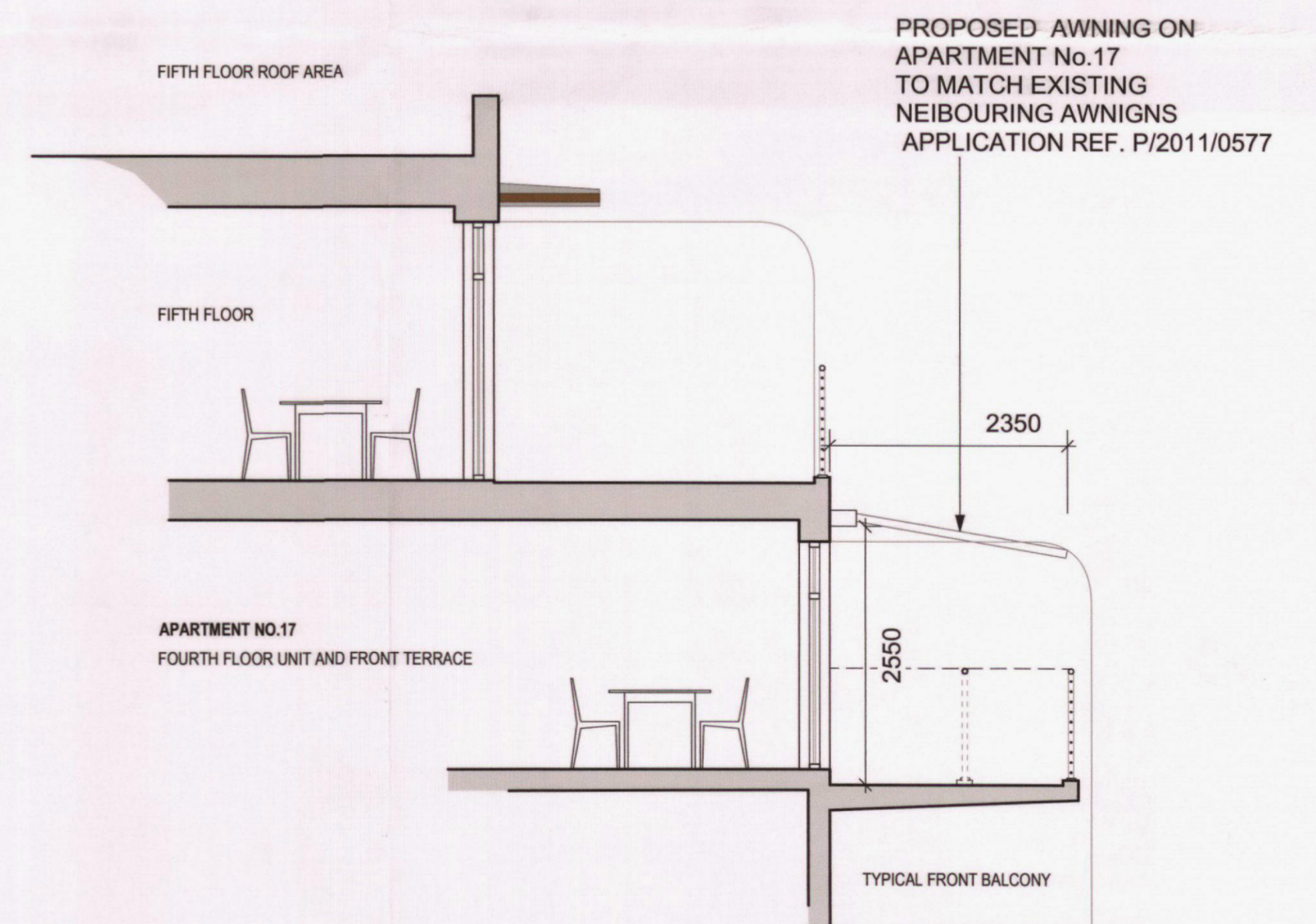


FRONT ELEVATION (SOUTH) OF PROPOSED AWNING ON APARTMENT NO.17

PREVIOUSLY  
APPROVED AWNING  
ON NEIGHBOURING  
APARTMENTS  
APPLICATION REF.  
P/2011/0577

PROPOSED OPAL AWNING  
BY WEINOR TO MATCH EXISTING

APARTMENT No.17



PROPOSED SECTION AA



B 22/6/17 Ref. to previous application added

A 20/6/17 First Issue

No. Date Revision Notes

Rev By