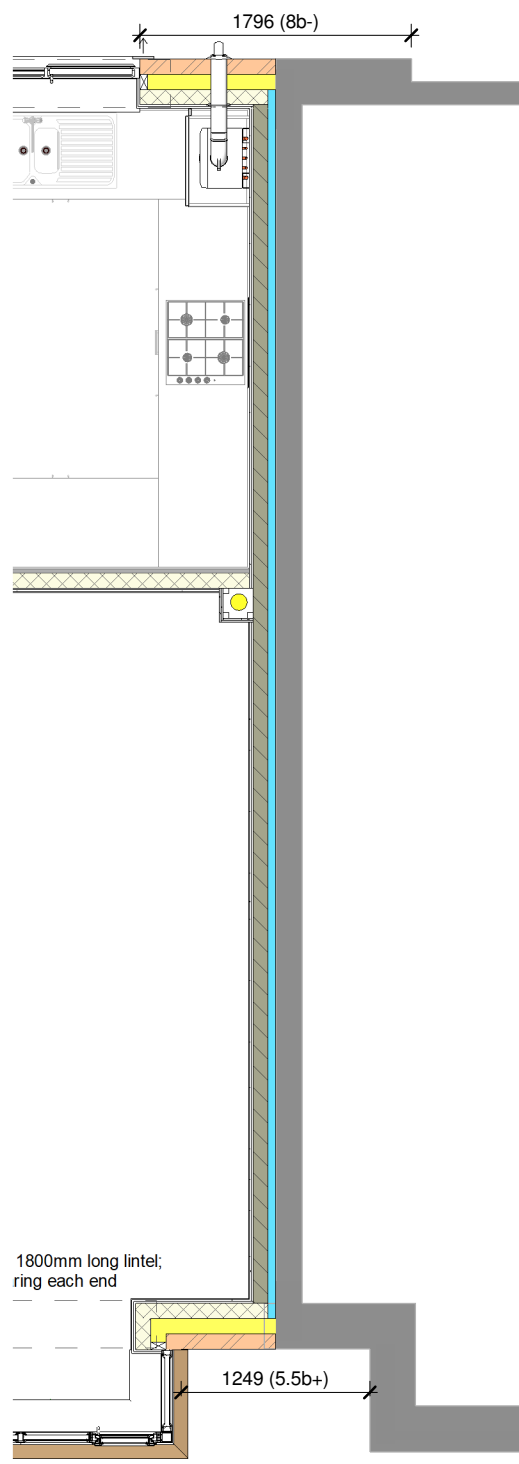


1 Ground Floor  
1 : 50

Plot Numbers & Handing:  
AS - 2, 3, 4, 92, 93, 94, 135  
OPP - 64, 71, 99, 100, 101, 129, 134



Revision Schedule		
Rev	Date	Description
E	17 May 2019	See Amendment Schedule

Wall Legend

	<b>Standard External Insulated Cavity Wall</b> 102.5mm facing brickwork 100mm cavity filled with blown mineral fibre insulation 100mm aerated concrete block (2.9N/mm <sup>2</sup> ) 12.5mm gypsum board on adhesive dabs
	<b>Mid Strength External Insulated Cavity Wall</b> 102.5mm facing brickwork 100mm cavity filled with blown mineral fibre insulation 100mm high strength aerated concrete block (7.3N/mm <sup>2</sup> ) 12.5mm gypsum board on adhesive dabs
	<b>High Strength External Insulated Cavity Wall</b> 102.5mm facing brickwork 100mm cavity filled with blown mineral fibre insulation 100mm high strength aerated concrete block (7.3N/mm <sup>2</sup> ) 12.5mm gypsum board on adhesive dabs
	<b>External Uninsulated Cavity Wall (to garage, cold roof space etc.)</b> 102.5mm facing brickwork 100mm air cavity 100mm aerated concrete block (2.9N/mm <sup>2</sup> )
	<b>Party Wall</b> 100mm aircrete block (3.5N/mm <sup>2</sup> ) 100mm Party Wall blown glass mineral wool insulation 100mm aircrete block (3.5N/mm <sup>2</sup> ) 12.5mm gypsum board on adhesive dabs
	<b>Internal Blockwork Partition Between Dwelling and Garage</b> 100mm aerated concrete block (2.9N/mm <sup>2</sup> ) 70mm British Gypsum Thermaline Super Thermal Laminate Plasterboard on adhesive dabs
	<b>Internal Blockwork Partition</b> 12.5mm gypsum board on adhesive dabs 100mm aerated concrete block (2.9N/mm <sup>2</sup> ) 12.5mm gypsum board on adhesive dabs
	<b>Structural Stud Partition</b> 12.5mm gypsum board   12.5mm OSB2 sheathing 63 x 38mm timber studs (studs and noggings rotated through 90°) 12.5mm gypsum board   12.5mm OSB2 sheathing
	<b>Non-Load Bearing Stud Partition</b> 12.5mm gypsum board 63 x 38mm timber studs 12.5mm gypsum board
	<b>Stud Partition with Acoustic Insulation</b> 12.5mm gypsum board 63 x 38mm timber studs, with 65mm thick Isover APR 1200 acoustic insulation packed between 12.5mm gypsum board

Note:- all blockwork drawn magenta to be 3.6N/mm<sup>2</sup>  
Note:- all blockwork drawn blue to be 7.3N/mm<sup>2</sup>  
Refer to current Bellway Construction Specification for further details

CONSTRUCTION **Bellway**  
www.bellway.co.uk

**Bellway Group Technical**  
Seaton Burn House, Dudley Lane, Seaton Burn  
Newcastle upon Tyne NE13 6BE  
Tel: 0191 217 0717 | Fax: 0191 236 6230

Project  
**The Artisan Collection**  
2018 Issue  
Working Drawings



Drawing Title  
**The Chandler**  
951 ft<sup>2</sup> | 3b Det/Semi | All Traditional Variants  
Ground Floor Setting Out Plan  
**CH-3B-2S-AT**

Drawn By DL	First Issue Date 16 Nov 2018	Scale(s) 1 : 50
Job No	Drg Status Construction	Revision E
Drawing No. <b>A/951/10/AT/01</b>		

Do not scale - if in doubt, ask