

MARBLE BED.

2350 x 2310 R/S.

OR 2395 R/S TO CEILING.

CURTAINS.

DOUBLE TRACK.

VOILE + BACKOUT.

STAIRS.

TOP 855 x 2060 R/S.

ROMAN (NORMALISED?)

BOTTOM 845 x 2310 R/S.

AS ABOVE.

ENTRANCE TOP.

2990 x 2325 R/S.

CHECK MEASURE

SM INSTRUCT MEASUR.

MEASURED CURTAINS TO SILL.

LOUNGE FRONT.

2340 x 2295 R/S.

DOUBLE TRACK.

VOILE + UNED.

OR 2480 x 2370 R/S.

↳ OUTSIDE RECESS.

SG TRACKS ALREADY IN PLACE.  
26mm Depth

LOUNGE SIDE (BEHIND SEAT).

SINGLE TRACK

MAIN FABRIC.

WORK AS PER IMAGE

DEPT. 2370 R/S.

(UP TO 2380 IN RECESS).

LOUNGE BACK

4000 x 2385 R/S.

OR 4390 x 2385 R/S.

↳ TAKING UP WALL ON R.H.

INSIDE RECESS

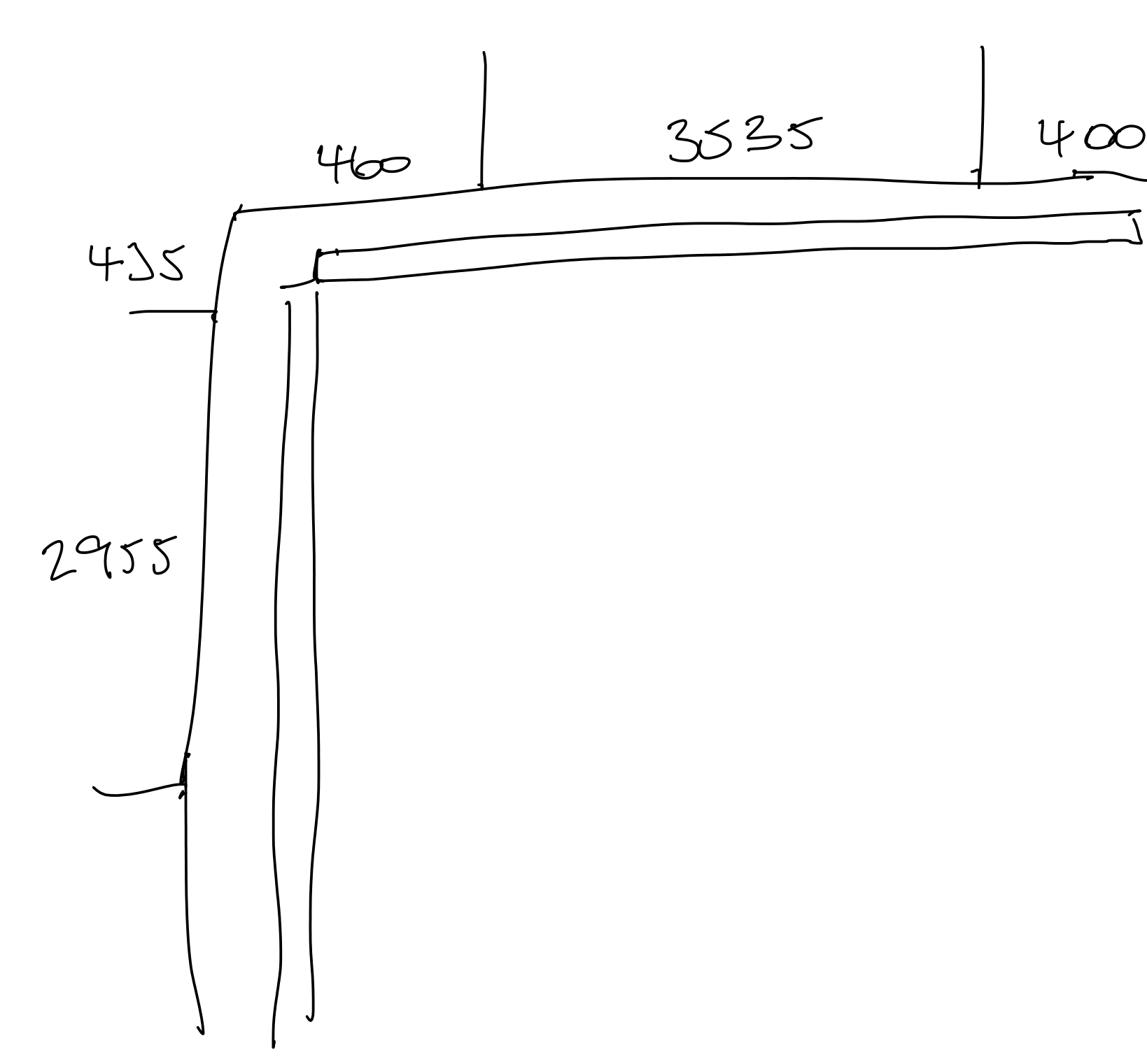
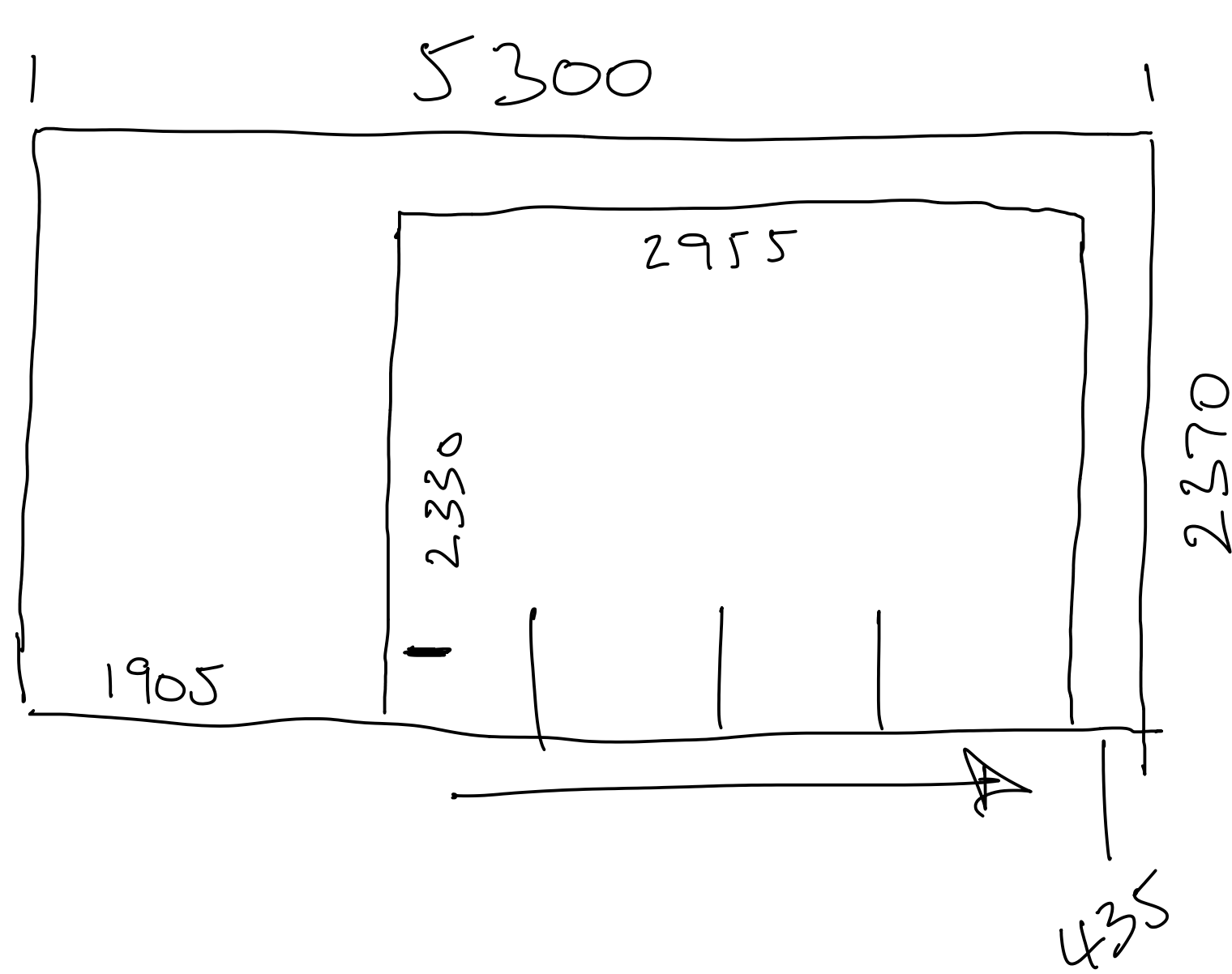
↳ 2940 x 2350 R/S.

KITCHEN / DINING.

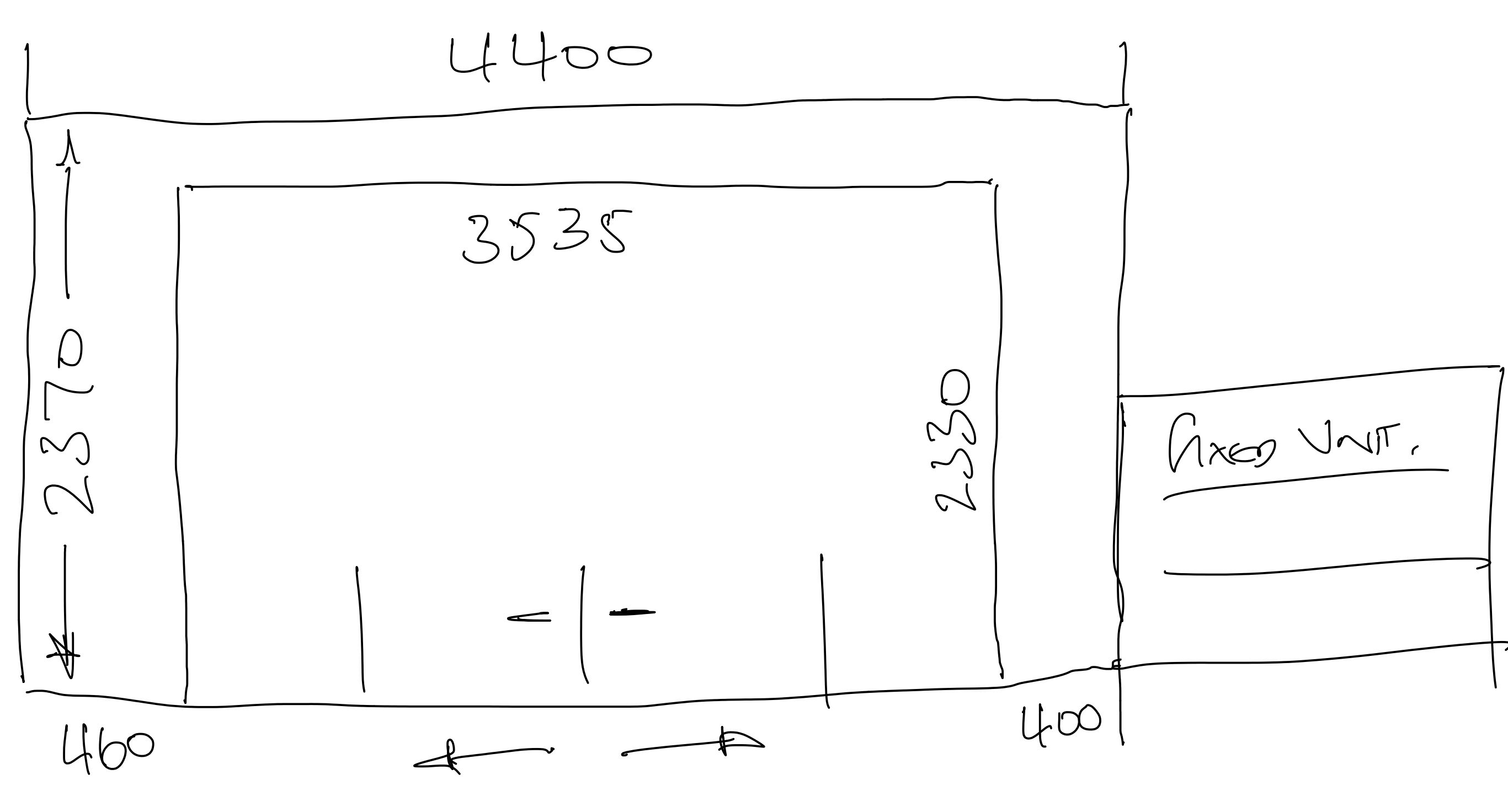
LEFT SIDE - 2955 x 2330 R/S.

DOUBLE TRACK.

OUTSIDE RECESS



LEFT BACK.



WINDOW

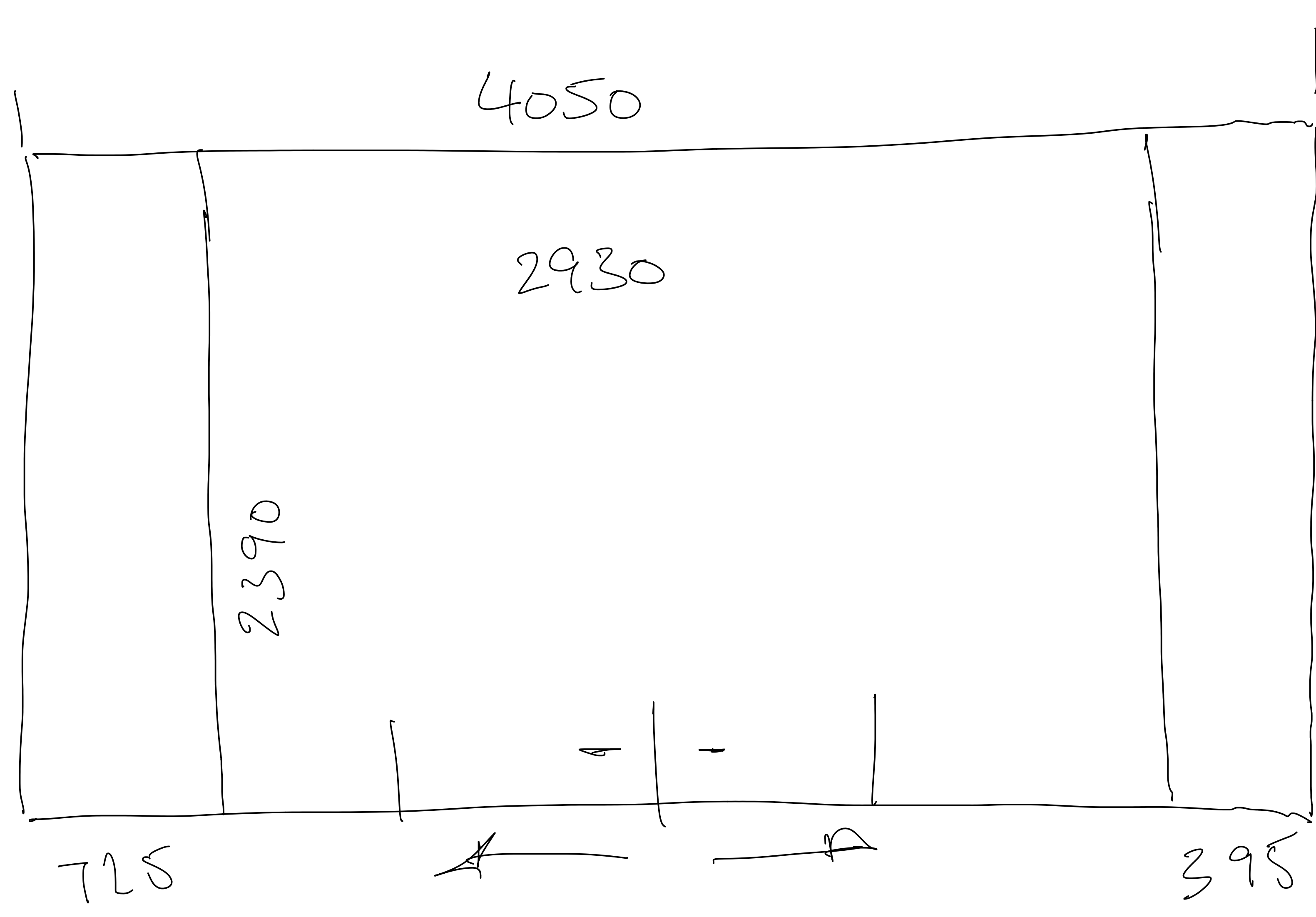
1722 x 1155 R/S.

DOUBLE ROMAN

VOILE + NORMAL

ROMAN INSIDE RECESS.

LEFT DOORS.



LOUNGE SEAT OFFSET.

VOILE UNDER WAY.

KITCHEN MEASUREMENT. 7001/03 CM.

BEDROOM CURTAIN. 4623.0758