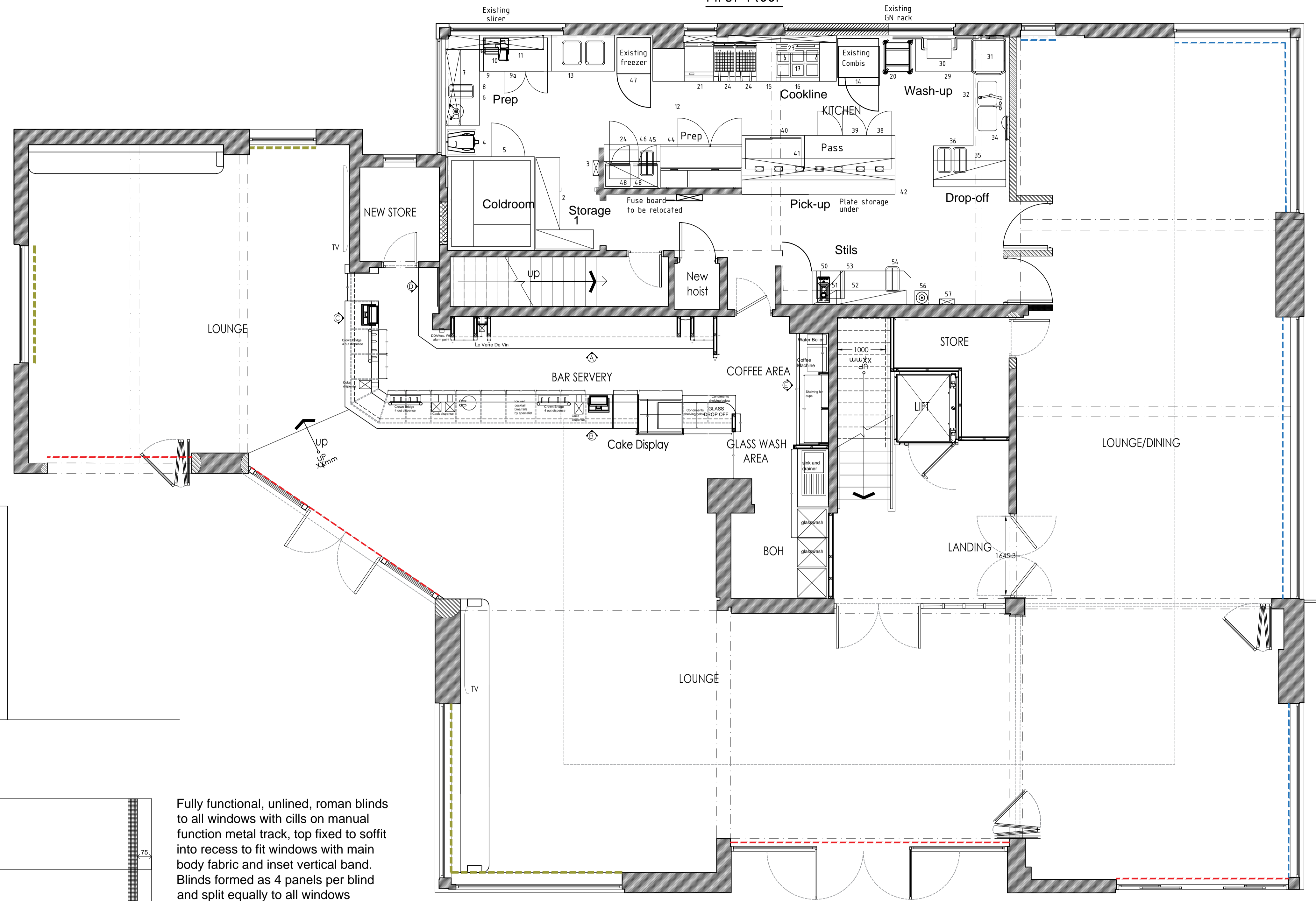


First Floor



NOTES
 The designs and details on this drawing are copyright and must not be reproduced without the written permission of the designer.
 Contractors are to check all sizes and dimensions before setting out any site or shopwork. Any errors or discrepancies to be reported to the designer.
 Do not scale off this drawing.

REVISIONS	DATE
REV-A Additional information added to schedule	18/02/25 JAA
REV-B Updated fabric information added to schedule	27/02/25 JAA

STAIN SPECIFICATION	GENERAL NOTATION
ALL TIMBER/JOINERY ITEMS TO BE STAINED AND POLISHED TO STAIN SPECIFICATION. ALL TIMBER/JOINERY ITEMS TO BE PRE-FINISHED OFF SITE. STAIN SAMPLES TO BE PROVIDED TO DESIGNER FOR APPROVAL PRIOR TO COMMENCEMENT ON SITE. STAIN SPECIFICATION 1 No. COAT STAIN 2 No. COATS BASE COATS 1 No. COAT OF LAQUER (90% SHEEN) COLOUR: TO APPROVED SAMPLE	ALL DIMENSIONS TO BE THOROUGHLY CHECKED ON SITE PRIOR TO MANUFACTURE, ORDERING ETC OF ANY MATERIALS, FIXTURES & FITTINGS. DO NOT SCALE FROM THIS DRAWING ANY DISCREPANCIES TO BE REPORTED TO ARCHITECT/DESIGNER AS SOON AS POSSIBLE

WINDOW TREATMENT DETAIL

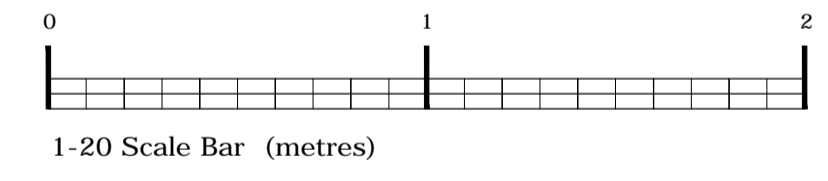
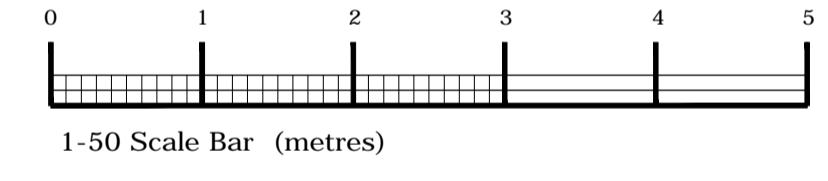


Fully functional, unlined, roman blinds to all windows with cills on manual function metal track, top fixed to soffit into recess to fit windows with main body fabric and inset vertical band. Blinds formed as 4 panels per blind and split equally to all windows 3No unit per main window run ,and 2No to the casual bar area.

Chrome metal chain function fixed back to wall with "P" clip as strangulation prevention

Main body to all blinds finished in full self-blackout fabric Ref: Warwick Fabrics Collection PLUSH VELVET III Col Plush Bone TEL - +44 (0)1451 822383
 Trim to blinds in Bar lounge Ref: Warwick Fabrics Design Plush Col Moss
 Trim to main Dining lounge Ref: Warwick Fabrics Design Plush Velvet III Col Plush Airforce

Voile to the doors to be 250 % fullness with weighted base in max 50mm turn up all to be on white silent gliss track fixed to soffit finished in Ref: EDMUND BELL & CO Ltd 9012/White/C5 Slub FR Voile White Tel 01706 717070



CONSTRUCTION

DRAWING DESCRIPTION
 WINDOW TREATMENTS

JOB TITLE
 WOODBRIDGE GOLF CLUB
 SUFFOLK
 IP12 2PF
 CLIENT
 WOODBRIDGE GOLF CLUB

DRAWN BY JB	SCALE 1:20/50 @A1
DATE FEB 25	DRAWING NO. 2208 - 24
CHECKED JA	REVISION B

John Dixon & Associates Ltd,
 Unit 211
 Charibars Business Centre,
 Chapel Road,
 Oldham
 OL8 4QQ
 TEL : 0161 682 0964
 FAX : 0161 683 4106
 E-MAIL : info@johndixon.co.uk
 WEB : www.jda-design.com