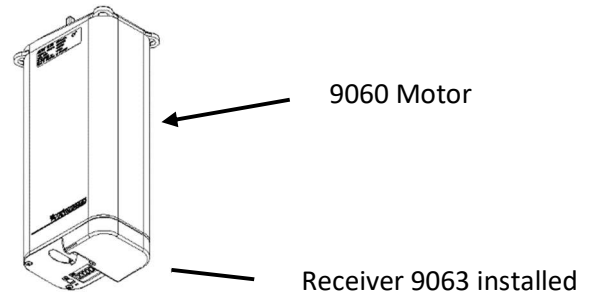


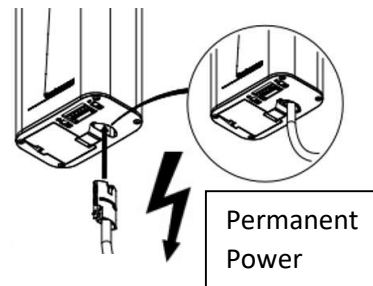
SG5600 with 9060 motors operated via SG9940

Programming the transmitter to the motor

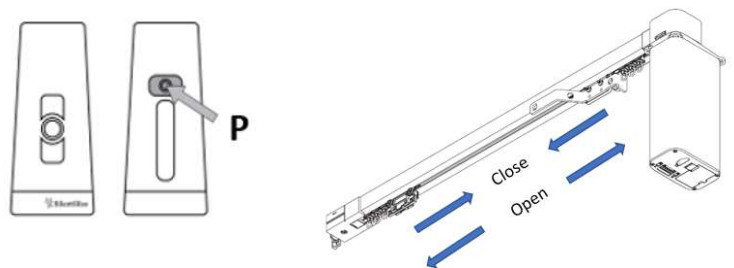
1) Ensure the receiver is plugged in to the motor



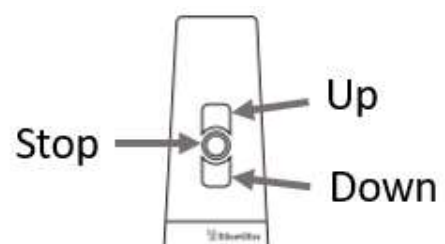
2) If power is on - turn off / disconnect the power for 30 seconds - turn on / re-connect mains to the motor – once powered up leave 15 seconds before step 3. (The motor is now ready to be programmed).



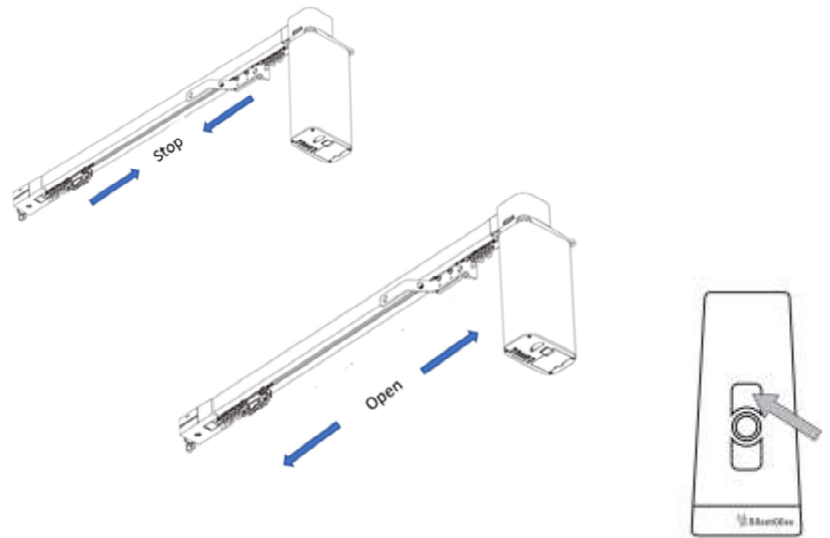
3) Press programming button P on the rear of the handset for 1 - 5 secs. The motor will now enter programming mode – the track will start moving open and close approx. 300 mm in continuous cycles. (The motor is now in programming mode for approx. 5 minutes.)



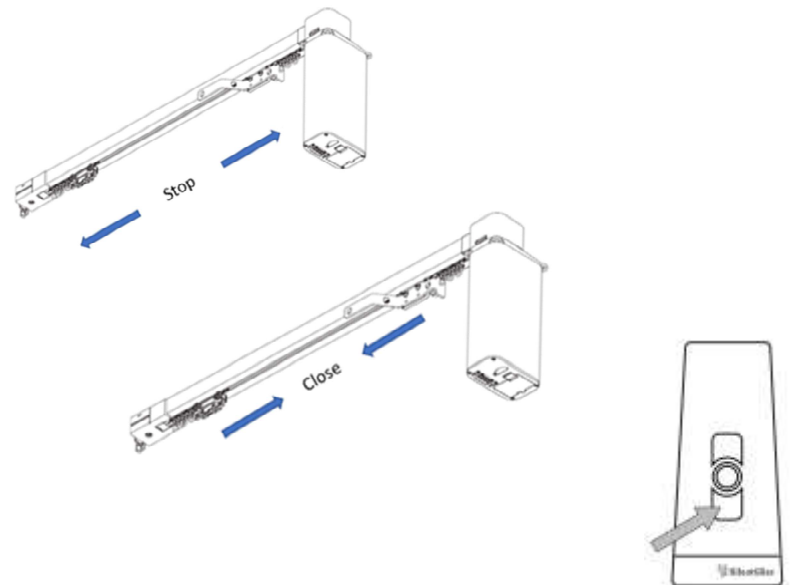
4) Now assign direction of movement to the correct direction button on the channel selected to be assigned, of the 3 major buttons on the front of the handset – the upper is for Open, lower for Close and the middle - Stop



5) To capture the open movement to the open button, wait until the movement moves close and pauses – then press the open button immediately the motor / overlap arm moves in the open direction (within 1 second of starting) the movement will pause momentarily then continue to move.



6) To capture the close movement to the close button - wait until the movement moves open and pauses, then press the close button immediately the motor / overlap arm moves in the close direction – (within 1 second of starting) the movement will now stop indicating the handset has been successfully programmed and is now be paired.



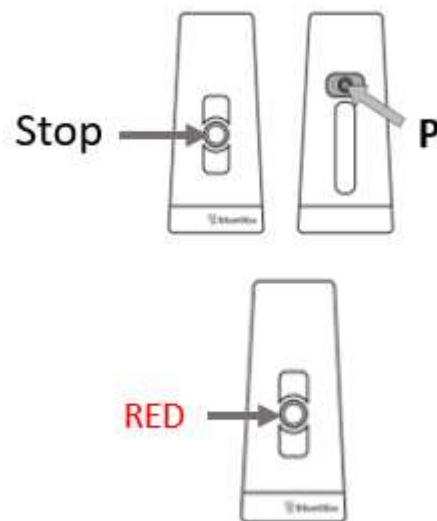
Note

If at this point the movement continues – either the open or close movement has not been successfully paired and a clear channel / delete a programmed channel procedure needs to be actioned.

To perform a Clear channel / delete a programmed channel

Press stop + programme buttons together for 6 seconds + – at approx. 6 seconds the LED around the stop button will flash **RED** – the channel will now be cleared of information from the handset to the motor.

The programming procedure now needs to be started again from Step 1



Note

It is possible the programming can be set in reverse – that is capturing the down direction on the up button and vice versa – here again the clear channel / delete programmed channel needs to be actioned and the programming procedure started again from Step 1