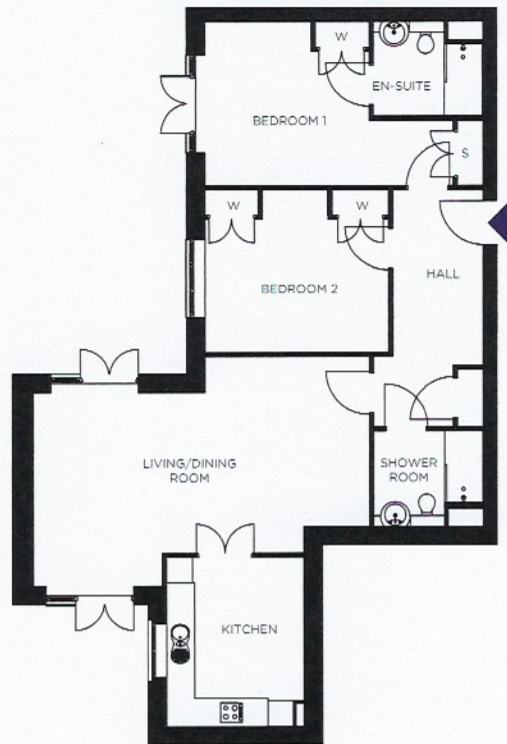


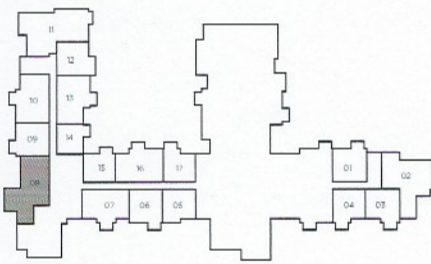
# 8 The Grange

Plot 8 | Village Centre Apartment

2 bedrooms | 1,181 sq ft | Ground floor



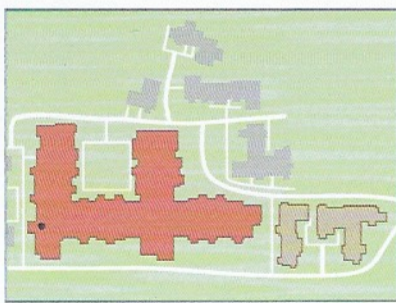
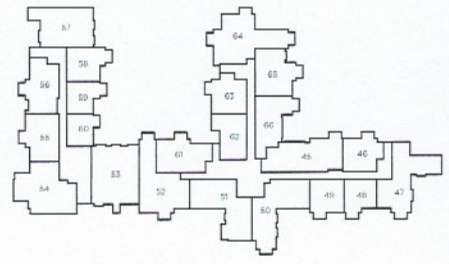
Ground Floor



First Floor



Second Floor



Living/dining room	25' 8" x 15' 0"	7.82m x 4.58m
Kitchen	10' 6" x 13' 0"	3.20m x 3.95m
Bedroom 1	19' 0" x 12' 7"	5.78m x 3.83m
En-suite	8' 4" x 7' 2"	2.54m x 2.19m
Bedroom 2	14' 1" x 12' 6"	4.27m x 3.80m
Shower room	8' 4" x 7' 3"	2.54m x 2.20m

[www.elderswell.co.uk](http://www.elderswell.co.uk) | 01234 432 937

Floorplans are not to scale and are indicative only. Location of windows, doors, bathroom fittings, kitchen units and appliances may differ. Dimensions given are approximate and should not be used to order carpets or furniture. Balcony and terrace sizes and locations may differ from those illustrated.

