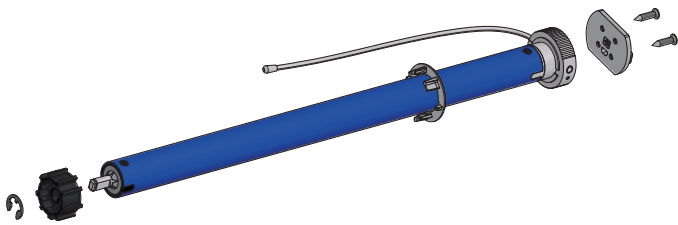


# R1912 & R1918 LITHIUM MOTOR

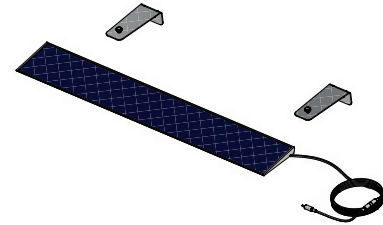
## Operating Instructions

### MOTOR ASSEMBLY



- Fit crown by sliding along the motor body until it meets the motor head.
- Fit the drive using the cir-clip to secure in position.
- Attach the motor plate with the screws supplied in either left hand or right hand orientation as required.

### ATTACHING THE SOLAR PANEL



- Make sure the motor has enough charge to operate the blind.
- Attach the solar panel to the charge port on the motor using the 1.5m charge cable.
- Place/ fix the solar panel so that it is facing direct sunlight.

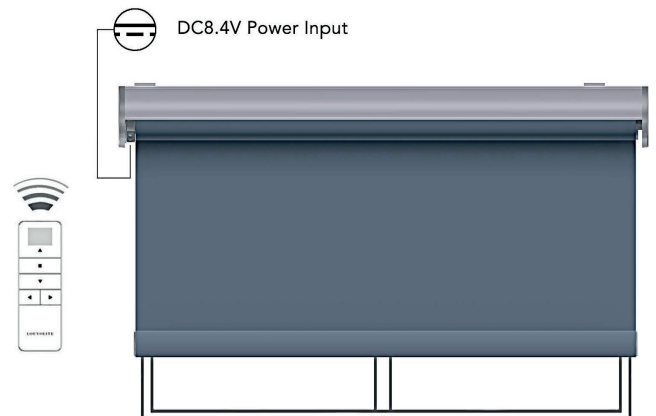
### KEY FEATURES

- DC power supply with energy saving patented design, 7.4V 2600mAh (R1912) 3000mAh (R1918) Lithium battery built-in.
- Setting limits by remote control. Up to 6 limits, including upper/lower limit and 4 intermediate positions.
- 433.92MHz radio control.
- Short/open circuit protection
- Automatic alarm buzzer for low battery, then the motor will enter jog mode.
- Patented helical gear design, noise level lowered to 30dB.



### POWER SOURCE & CHARGING OPTIONS

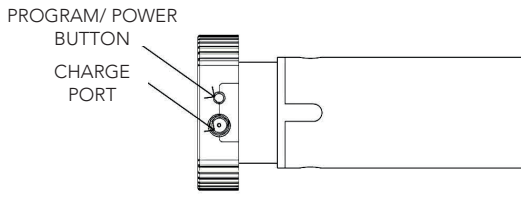
Built-in Li-ion battery supply. Recharged using an external charger. On a full charge can be used up to 6 months. Charging time is 6-8 hours.



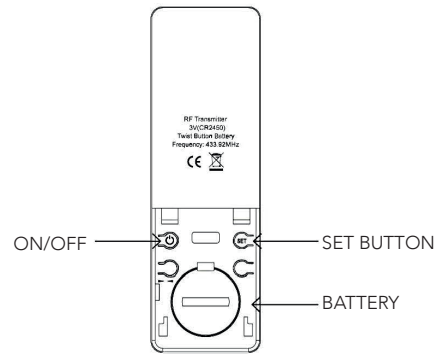
### REMOTE LAYOUT

<p><b>R1920 - 1CH</b> Touch screen</p>	<p><b>R1922 - 6CH</b> Touch screen</p>	<p><b>R1924 - 16CH</b> Touch screen</p>	<p><b>R1940 - 1CH - WH</b> Push button Also available in black</p>	<p><b>R1942 - 6CH - WH</b> Push button Also available in black</p>	<p><b>R1944 - 16CH - WH</b> Push button Also available in black</p>

## MOTOR HEAD



## REMOTE



### POWER ON/OFF

After switching off the power the motor will not be able to receive remote signals.

Power ON



1. Press the PROG button on the motor head for 1 second until the motor beeps once.

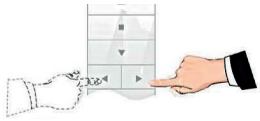
Power OFF



2. Press the PROG button on the motor head for 7 seconds until the motor beeps once. After a long beep the motor is now OFF

### PAIRING REMOTE

If there is no action in 10 seconds the motor will exit programming automatically.



1. Select a channel for pairing on your remote control



2. Press the PROG button until the motor beeps and oscillates once. The motor will now be in setting mode.



3. Press UP within 10 seconds. The motor will oscillate again, the motor and remote are now paired.

### CHANGE DIRECTION

If there is a need polarity can be reversed.



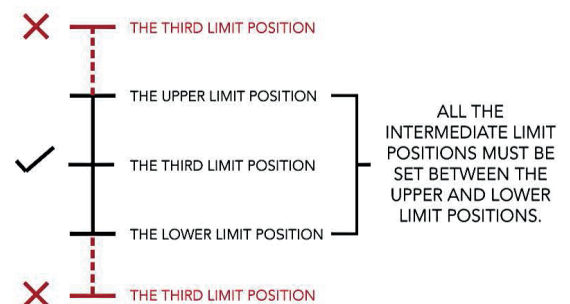
1. Press and hold STOP on the programmed remote for 5 seconds, the motor will oscillate once.



2. Press DOWN within 10 seconds and the motor will oscillate again, the motor direction is now reversed

### LIMIT POSITION

- The first and second positions are Upper/ Lower limit positions. The other four are intermediate positions.
- After the Upper/ Lower limit positions are set, all the intermediate positions must be set between the Upper and Lower limit.
- The Upper and Lower limit position can only be fine-tuned once set. It can only be removed by deleting all the motor memory.
- Press the UP or DOWN button once and the motor will move to the next pre-set limit position. When the upper position has been reached the UP button will be unresponsive. When the lower position has been reached the down button will become unresponsive.
- Press and hold the UP or DOWN button until the indicator on the programmed channel flashes twice, release, then the motor will move to the Upper or Lower limit position without stopping at any intermediate position.

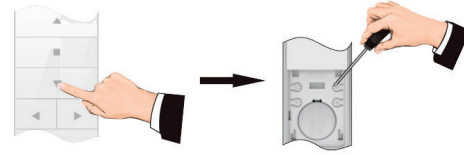


## SETTING LOWER AND UPPER LIMIT

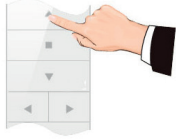
Once the limits are set the system will exit the command automatically. Both limits must be set to exit mode.



1. **Lower Limit** - Press SET on the programmed remote for 1 second



2. Press DOWN to the desired lower limit position, then press STOP. Press SET again for 1 second the motor will oscillate once, the lower limit is now set.



1. **Upper Limit** - Press UP to the desired upper limit position then press STOP.



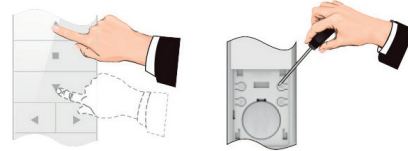
2. Press SET for 1 second and then press SET again to confirm. The motor oscillates once, the upper limit is now set.

## FINE-TUNING LIMIT POSITIONS

Limits can be fine tuned individually. If there is no activity for 30 seconds the system will exit the command automatically.



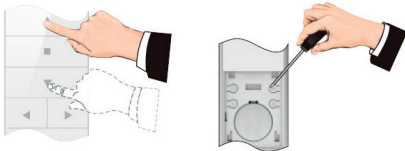
- Let the motor run to the limit position and press SET for 1 second. The motor will Oscillate once, the motor is now in setting mode.



2. Use UP/DOWN to adjust to exact position and then press SET again for 1 second. The motor will oscillate once, the fine-tune setting is now complete.

## SETTING INTERMEDIATE LIMITS

The motor will oscillate once and is now in setting mode. Use the UP/DOWN arrows to adjust to the exact position. Press SET again, the motor will oscillate once. The fine-tune setting is now complete.



1. Move the blind to the desired position and press SET for 1 second.



2. The motor will oscillate once and is now in setting mode. Press SET again, the motor will oscillate once. The intermediate limit position is now set.

## DELETING LIMIT POSITIONS

The first limit cannot be deleted separately, to remove this limit all limits must be deleted.



1. Let the motor run to the limit position which needs to be deleted and press SET for 7 seconds.



2. The motor will oscillate after 1 second and then go in setting mode. The motor will oscillate once again after 7 seconds, the pre-set limit position is now deleted.

## JOG MODE

The default movement of the motor is continuous, it can be changed to jog movement or back to continuous movement for blind positioning or during fine tuning mode.

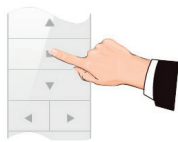


1. Press and hold STOP on the programmed remote for 5 seconds. The motor oscillates once.



2. Press STOP again. The motor oscillates again, the movement mode is changed.

## ADDING A REMOTE



1. Press and hold STOP on the programmed remote for 5 seconds. The motor oscillates once.

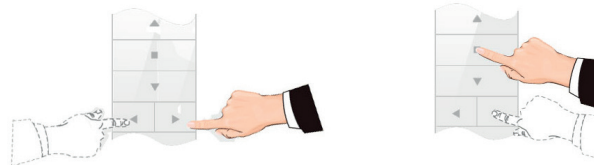


2. Press UP on the new remote. The motor oscillates again, the new remote is now added.

## CHANNEL LOCKING & UNLOCKING

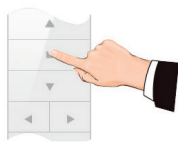


**Channel Locking** - Using the LEFT or RIGHT button, select the desired channel you wish to lock the remote on. Press STOP and RIGHT buttons together until the selected channel flashes or CC is displayed.



**Channel Unlocking** - Using the LEFT or RIGHT button, select the desired channel you wish to unlock on the remote. Press STOP and RIGHT buttons together for 2 seconds until all channels flash or CC is displayed. The remote is now unlocked.

## DELETE SINGLE CHANNEL



1. Select channel to delete. Press and hold STOP on the programmed remote for 5 seconds. The motor oscillates once.



2. Press SET for 1 second. The motor oscillates again, the selected channels memory is now deleted.

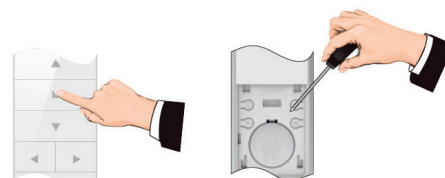
## DELETE ALL MEMORY

Method 1



1. Press PROG 4 times, press for a fifth time and hold down until the motor oscillates twice. Motor memory is now erased.

Method 2



Deleting all memory returns the motor back to factory settings.

2. Press and hold STOP on the programmed remote for 5 seconds. The motor oscillates once.

3. Press and hold SET for 7 seconds within 10 seconds of the motor oscillating. The motor will oscillate again for 1 second. The motor will oscillate twice for 7 seconds, all memory is now erased.

## TROUBLE SHOOTING

	ISSUE	CAUSE	SOLUTION
1	Motor does not run or runs slowly	Over-load protection	Motor has been operated frequently in a short space of time or is being operated in hot conditions. Allow the motor to cool before next operation.
2	Motor does not run or runs slowly	Motor has reached its limit	Motor has reached a pre-set limit. Operate the blind in the opposite direction and check for movement.
3	Motor does not run or runs slowly	Out of battery	Recharge the battery.
4	Motor does not run or runs slowly	In power off mode	Turn power on to the motor.