



**The best under the sun.**  
Create the most alluring shade in the world.

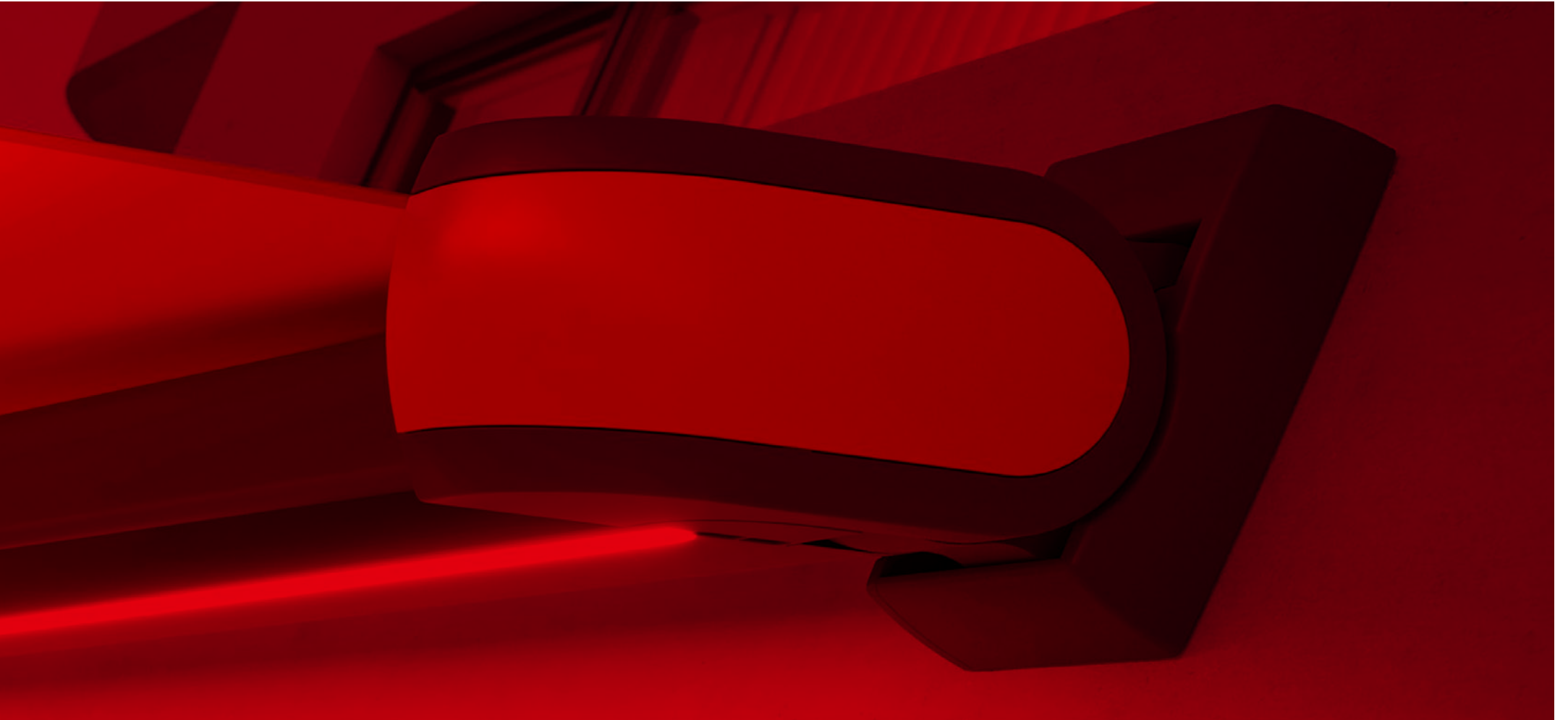
Designer Awnings for Patio and Balcony

**markilux**  
The best under the sun



The best under the sun.  
Create the most alluring shade  
in the world.

markilux







There is always a clear line  
to our designs which  
**usually ends in a reddot.**

#### Outdoor living

Hours of relaxation and recuperation or valuable time well spent with your family and friends – these are the precious moments in which you cherish your outdoor lifestyle. Designer awnings from markilux not only provide shade, they open up new opportunities for enjoying life. They provide protection on hot days and make for a cosy ambience long after the sun has set. In choosing a markilux designer awning, you are opting for the very best quality “Made in Germany” – and for endless hours of light-hearted fun outdoors.

markilux designer awnings have received a multitude of awards:



| Brand



| Website



reddot design award  
winner 2015

| e.g. the markilux MX-1 compact

# Reduced to the essence: Free.Time. Quality – Made in Germany.



## **markilux quality**

The best possible materials and a comprehensive quality management system ensure that every designer awning has a long service life. As a company, markilux is certified according to EN ISO 9001.



## **markilux functionality**

markilux combines innovative technologies and smart solutions to create high-end products. A multitude of accessories and operating options make it possible to individualise your markilux designer awning in line with your own personal wishes.



markilux



**markilux design**

It is the perfect combination of form and function that turns an awning into a markilux designer awning. In this respect, markilux relies on its long-standing experience in R&D and design.

Member of  **Rat für Formgebung**  
German Design Council

  
german  
brand  
award  
20  
gold



**markilux service**

The combination of a brand product, expert advice and professional installation makes your solution perfect. Qualified markilux specialist dealers provide a comprehensive service and a personal point of contact in your area.

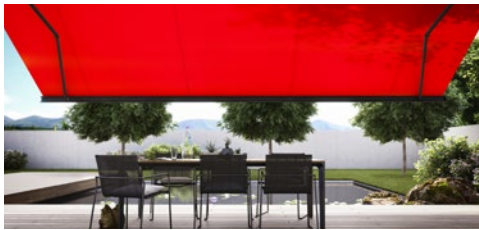


## Model

from page 10

### Design and function in perfection

Every markilux designer awning combines design, quality and technology into one unique solution. Within our large range of models, there is bound to be one that fulfils your wishes in terms of functionality and matches the ambience of your patio perfectly.

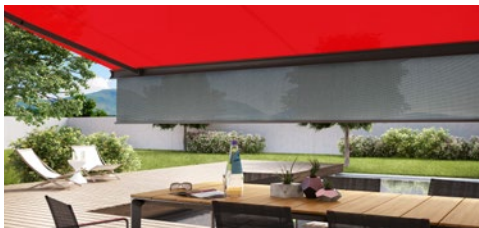


## Awning cover

from page 70

### Large range of colours and patterns

Our textile designers identify current trends in interior design, architecture and colour preference and turn them into unique awning fabrics. With more than 250 patterns to choose from, markilux offers you an unparalleled selection.

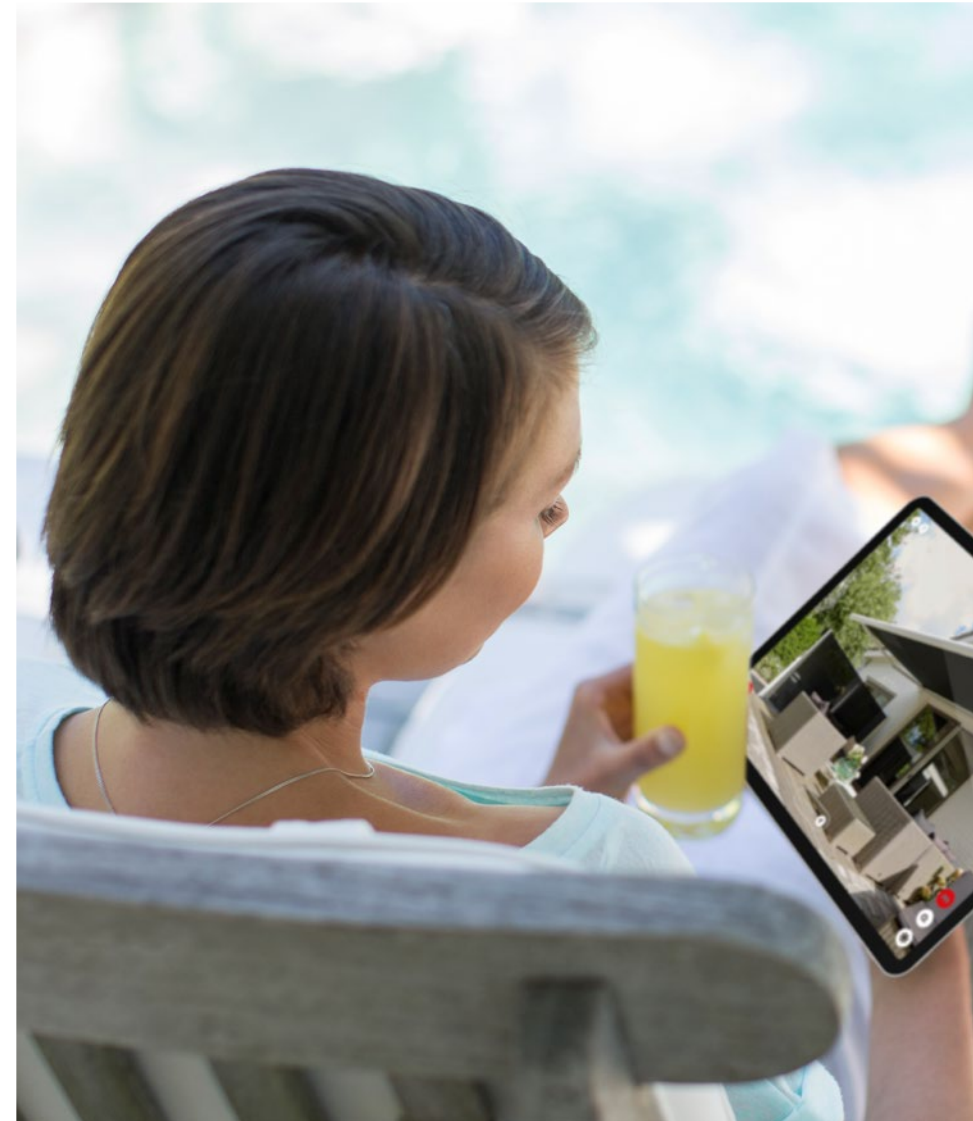


## Specification

from page 78

### Operation, options and accessories

Easy-to-use operating technology, optional lighting solutions and additional extras, such as infrared heaters, mean that we can build your system to your desired specification and make being outdoors a pleasure even when the sun isn't shining.



markilux

## Designer awnings from markilux. Individuality right down the line.

### Your model from 1 million configuration options

Your markilux designer awning is as unique as you want it to be. With a choice of more than 45 models, 250 timeless fabric patterns and a wide range of accessories, you can design an awning to suit your every need.

With lighting modules, infrared heaters, smart control technology and other additional functions, markilux awnings can enhance your outdoor experience at any time of day – or night.

Your markilux specialist dealer will gladly assist you with their professional advice and suggestions when helping you configure your very own designer awning.



### markilux 3D App and Awning Cover Finder

Configure your own dream awning: either live on your own house with the free markilux 3D App or by using the Awning Cover Finder at [markilux.com](https://www.markilux.com)

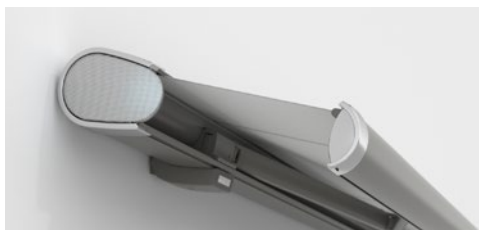


markilux Cassette Awnings



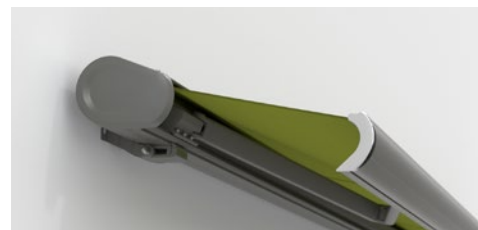
MX\_1 compact

page 14



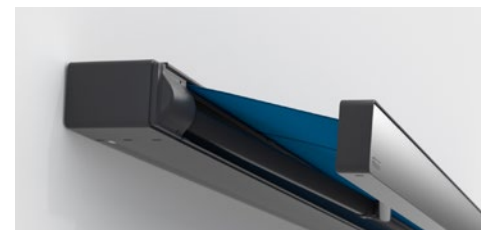
MX\_6000

page 18



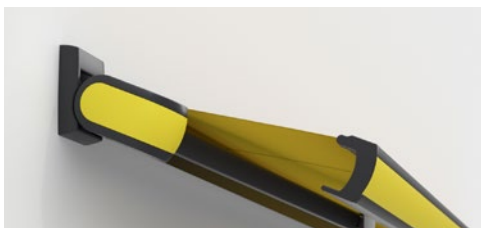
MX\_5010

page 20



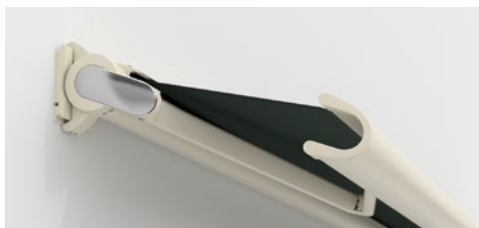
MX\_970

page 22



MX\_3

page 24



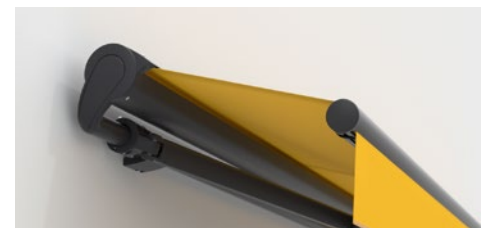
MX\_990

page 30



MX\_3300

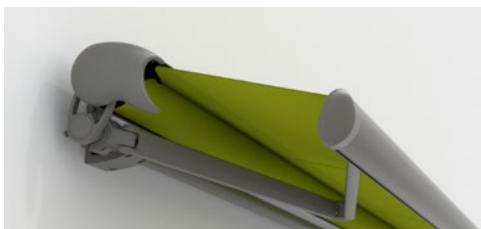
page 32



MX\_1710

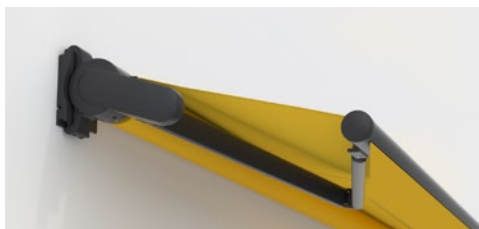
page 34

markilux Semi-cassette and Open Style Awnings



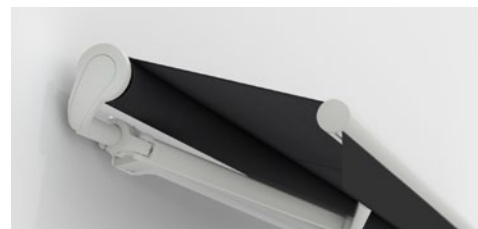
MX\_1600

page 38



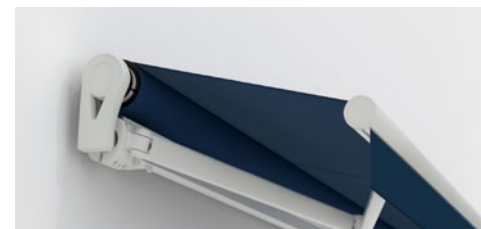
MX\_930

page 40



MX\_1700

page 42



MX\_1300

page 44

markilux Wind Protection and Extra Privacy



MX\_format page 48



MX\_790 page 50

markilux Awning Systems



MX\_pergola page 54

A perfect outlook.  
Everything in view.

Cassette Awnings

When the awning is retracted, the cassette completely encompasses the awning cover and technology, and thus provides the best possible protection from wind and weather.

Semi-cassette and Open Style Awnings

Part or all of the cover is not protected. Perfect, particularly for use on patios and balconies not exposed to the weather.

Wind Protection and Extra Privacy

Lateral protection against the sun, light wind and prying eyes.

Awning Systems

Large format sun protection out in the open or for buildings to which awnings cannot be attached for structural reasons.

Specification

|                                    |              |
|------------------------------------|--------------|
| Awning fabrics and frame colours   | from page 66 |
| Operation, options and accessories | from page 74 |
| Technical data                     | from page 82 |



MX\_pergola compact page 56



MX\_pergola stretch page 60



MX\_planet page 62




markilux markant page 64



MX\_syncra page 66



MX\_construct page 68



Design is the art  
of melding function  
with beauty.



## Cassette Awnings

# Quality has its merits. Usually the very best ones.

## markilux MX-1 compact

Just one look and the markilux MX-1 compact has already made a big impression by virtue of the way it uniquely combines form and function. Retracted, the tapered full cassette with a depth of 38 cm makes a big impression on the observer. Extended, it shows its true proportions: gleaming LED options in the cassette and front profile, eye-catching ambient lighting as well as a multitude of frame colour combinations. Design, “made by markilux”, that has received many an accolade. The markilux MX-1 compact manages to create an inimitable atmosphere at any time of the day or night, that will not cease to raise your heartbeat – now and in the future.



## LED Spots in the cassette

The MX-1 compact dowses everything in beautiful shade – and in the evening bathes everything in light.

## mx\_1 compact



**Cassette awning**  
max. 700 × 415 cm,  
cassette depth approx. 38 cm

**Arm technology**  
Bionic tendon

**Options**  
shadeplus and  
a broad range of light  
and colour options,  
page 16

### A personal statement on any façade

The markilux MX-1 compact, with a cassette depth of 38 cm is an eye-catcher and sun protection in one.

mx\_1 compact Options



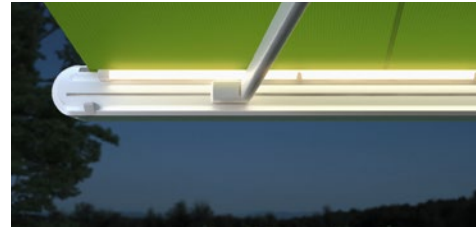
**Exclusive coatings Selection MX**

Front styling panel finishes in fashionably modern metallic paint, metal and special effect laquers, page 28.



**Colour combinations**

The cassette and styling panel are available in different colours which can be mixed and matched with one another.



**LED Line in the front profile**

Gives uniform lighting and a pleasant ambience after sunset.



**LED spotlights in the front profile**

The brilliant lighting effect converts the room under the awning into an oasis of well-being in the evening.

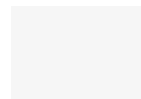


**LED Spots in the cassette**

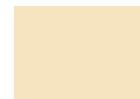
Highlight specific areas and enjoy a pleasant evening under the awning.

**LED ambient lighting**

An impressive eye-catcher in the evening hours. The front profile is available in five contrasting colours and can be illuminated with dimmable lighting.



Traffic white



Light ivory



Yellow



Red



Green



**markilux shadeplus**

At just the touch of a button, the optional protection from glare and prying eyes creates an enviable, private room outdoors. As standard, the shadeplus is equipped with a remote-controlled motor and comes supplied with a markilux remote control.

**Cassette awning**  
max. 700 × 400 cm

**Arm technology**  
Bionic tendon

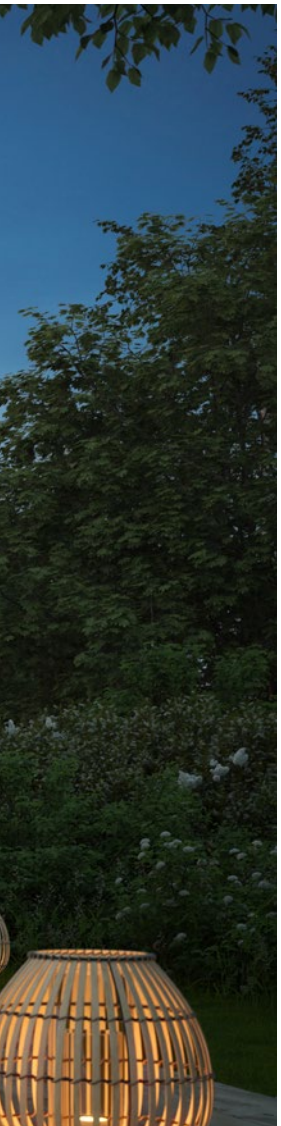
**Options**  
LED Spots in the front profile,  
end cap insert  
in stainless steel mesh,  
end cap trim  
in polished chrome,  
shadeplus,  
valance,  
coupled awning



reddot design award  
winner 2006

**LED spotlights in the front profile**

More than a decorative highlight. The markilux 6000 lights up your favourite spot in an elegant, flexible and energy-efficient manner, just the way you want it.



#### markilux shadeplus

The vertical shading in the front profile adds the finishing touch and provides personal protection from the sun and prying eyes. On request with a switch-operated / remote-controlled motor.



#### Variable decorative elements

Whether you choose the end cap insert in stainless steel mesh, the end cap trim and frame in a chrome finish or all deliberately uniform in the awning colour of your choice – you can design your very own personalised top model by markilux.

MX\_6000



## No false modesty: Germany's top model.

#### markilux 6000

A designer awning with many faces – each one more beautiful than the next. Create your own personal and unique model from a wide range of awning frame colours, decorative features and available accessories. With its remarkable dimensions and technical specification, the markilux 6000 makes a lasting impression. It also cuts a dashing figure as well. Invite Germany's top model into your home.

**Cassette awning**  
max. 700 × 400 cm

**Arm technology**  
twin steel-link chain,  
optionally with Bionic tendon

**Options**  
polished chrome fittings,  
shadeplus,  
valance,  
coupled awning



MX\_5010

## At home in every family. At home on your patio.

### markilux 5010

The markilux 5010 can be effortlessly extended, either at the touch of a button or via smart control by way of an app, and will be a hit with all the family. On top of that, as a coupled unit with up to three awnings installed next to one another, friends and guests will also be able to find a cosy spot in the generous shade this awning offers. This all-rounder encourages relaxed get-togethers and turns any hour spent outdoors into a happy one.



### Polished chrome fittings

Optionally available as an eye-catcher: the chrome-plated end caps fitted to the front profile. On request, with a wall sealing profile which drains rain away over the front of the awning.



### markilux shadeplus

Enjoy relaxing on the patio even when the sun is low in the sky.

# For everyone who loves all-round beauty.

## markilux 970

The markilux 970 exudes the urban lifestyle with confidence. Its neat and slim appearance makes it the ideal model for those who love the simplicity of elegance. Lighting features, a multitude of accessories and styling options for the front profile can lend any and every markilux 970 that individual something. All in all – simply because of its clean lines and straightforward design – this awning is an all-round performer.



## Variety in design

The colours of the cassette and front styling panel can be mixed and matched at will. And there are even three more anodised, accentuated colours available for the front styling panel: silver, bronze and black.



## markilux shadeplus

For more protection from prying eyes and the glare of the sun, the optional vertical blind in the front profile is bound to impress.



## LED lighting

LED Spots attached to or LED Line in the cassette make for a stylish ambience at dusk and during the evening.



# mx\_970



## Cassette awning

max. 600 × 300 cm

max. 500 × 350 cm

## Arm technology

Bionic tendon

## Options

LED Line in the cassette,

LED Spots under the cassette,

various standard colour combinations,

tinted front styling panels,

shadeplus



**Cassette awning**

max. 600 × 300 cm

max. 500 × 350 cm

**Arm technology**

Bionic tendon

**Options**

LED Line in the cassette,  
LED Spots below the cassette,  
various standard colour  
combinations,  
tinted front styling panels  
and end cap insert,  
page 26



MX\_3



## The awning with both: elegant curves and clean lines.

### markilux MX-3

Shapely curves, clean lines, a fascinating colour spectrum – these are the defining features of the markilux MX-3. The colour choice of the all-round styling panel offers a unique customisation option and makes the hearts of patio and balcony owners beat faster. When closed, the awning makes a good impression with its harmonious appearance and when open, it fully reveals its technical superiority.



### The new light in the awning sky

The best spot under the sun – even in the evening.  
Ideal for the most enjoyable hours outdoors.



### Clean lines. All round.

If you like shapely curves in combination with a straight-forward design, you will love the markilux MX-3.

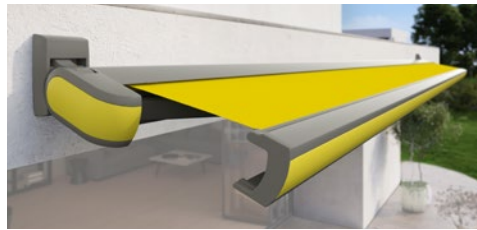
## LED lighting options



### Perfection. All round.

Whether you choose diffuse LED Line or accentuated LED Spot lighting, you will find all the highlights in the showroom of your local markilux specialist dealer and at [markilux.com](https://www.markilux.com)

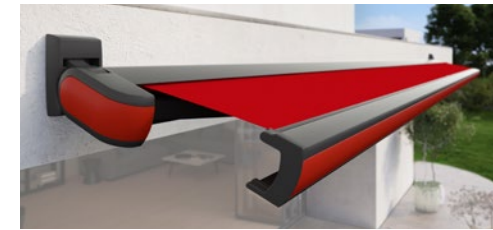
special architecture edition



Sulphur yellow RAL 1016 | 5215 | 32471 \*

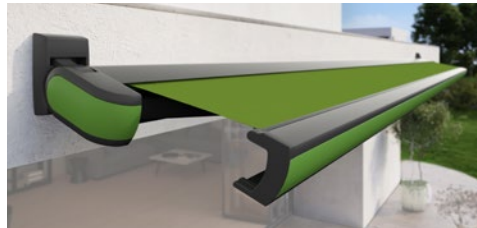


Red orange RAL 2001 | 5229 | 30912 \*

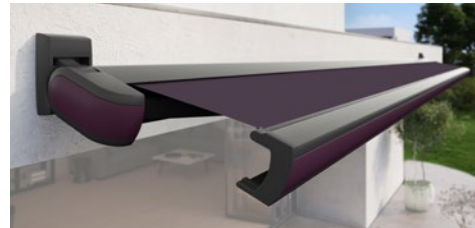


Traffic red RAL 3020 | 5204 | 31003 \*

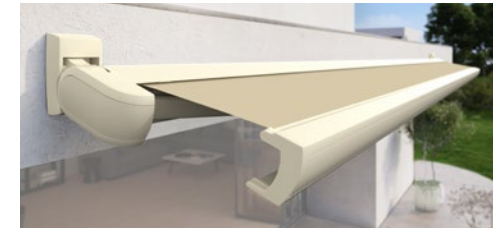
© RAL Bonn 2021



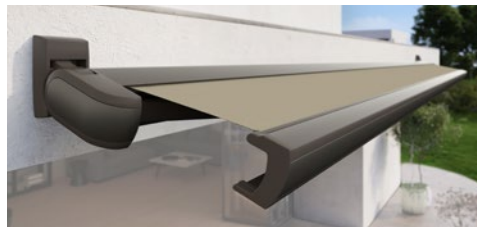
Yellow green RAL 6018 | 5204 | 32506 \*



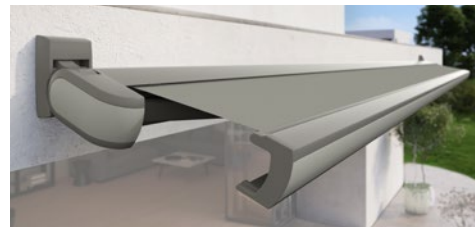
Purple violet RAL 4007 | 5204 | 31054 \*



Pearl white RAL 1013 | 5233 | 30937 \*



Pearl mouse grey RAL 7048 | 5229 | 31487 \*



Agate grey RAL 7038 | 5215 | 31592 \*

**Colour and satisfaction unlimited**

The standard markilux awning frame colours – and eight additional accentuated colours for the all-round styling panel – can be combined at will without surcharge and are available with a colour-coordinated, recommended awning cover on request. For even more individuality, the frame colour and cover can be selected from their respective RAL colour swatches.

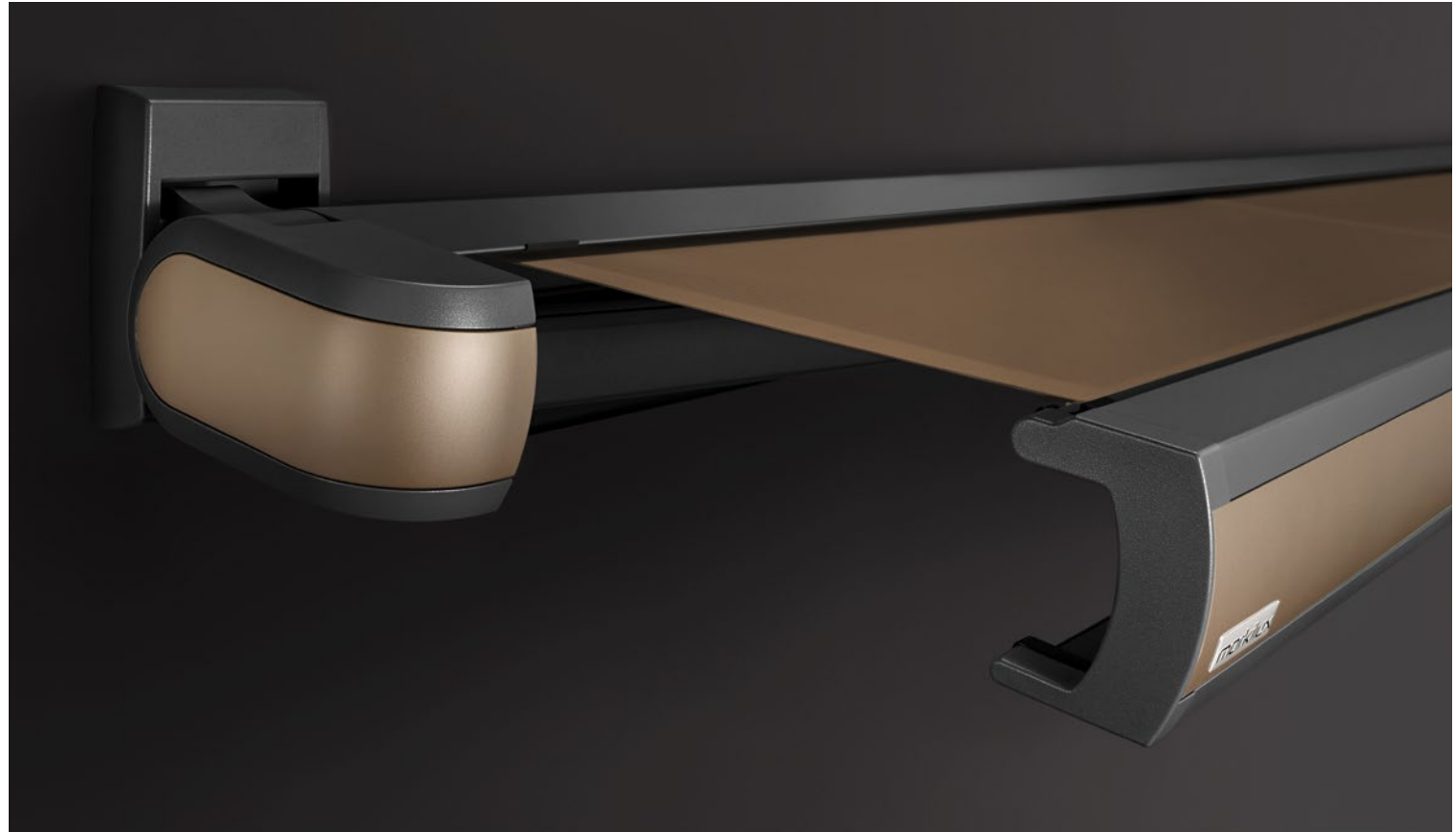


\* Front panel | Frame colour | Cover pattern

## Exclusive Coatings Selection MX



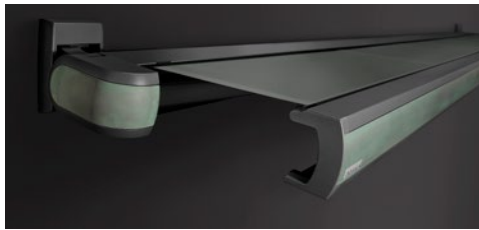
- + Innovative coatings with fashionably modern metallic finishes, real metal and special effect lacquers
- + 10 elegant colour combinations (feel free to select other combinations)
- + High degree of individualisation
- + Can be specified for the awning models markilux MX-3 und MX-1 compact



### The top new coat in awning finishes

A perfect look in a unique colour combination and with innovative surface coating. Ideally suited to outstanding architecture or contemporary patio and garden design. When the special turns into something very personal: Selection MX – the new awning top coat.

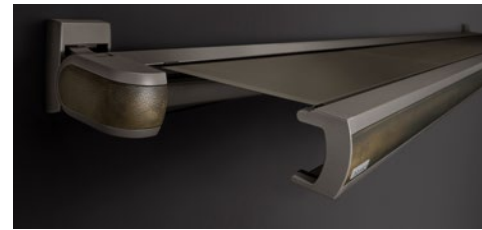
# mx<sub>3</sub> Options



SMX-01 Copper with green patina | 5204 | 31058\*



SMX-02 Brass with dark patina | 5233 | 32449\*



SMX-03 Bronze with dark patina | 5229 | 30947\*



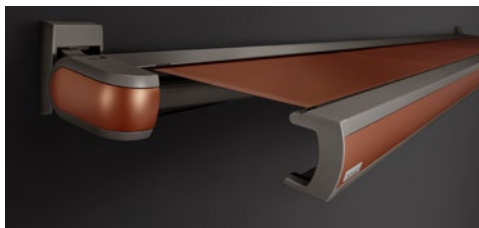
SMX-04 Matt black/silver special effect lacquer | 5204 | 31028\*



SMX-05 Matt white/silver special effect lacquer | 5233 | 31009\*



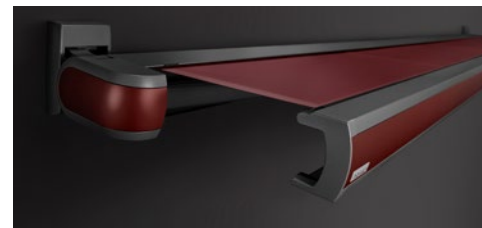
SMX-06 Silver-grey special effect lacquer | 5215 | 31018\*



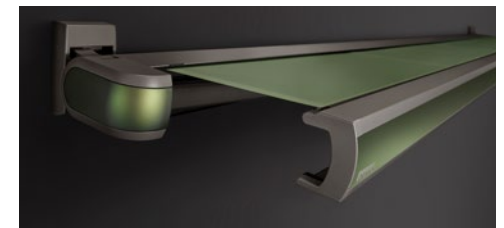
SMX-07 Amber orange metallic matt | 5229 | 31483\*



SMX-08 Pebble beige metallic matt | 5233 | 31487\*



SMX-09 Ruby red metallic matt | 5204 | 32513\*



SMX-10 Emerald green metallic matt | 5229 | 32516\*

\* Front panel | Frame colour | Cover pattern

# Creates a carefree ambience.

## markilux 990

Small, but impressive! You will be surprised how much technological sophistication there is to be found in this 125 mm high cassette. The folding arms and awning cover disappear into the compactly constructed cassette with U-shaped front profile. An impressive angle of pitch of up to 70 degrees when top fixing makes this awning suit smaller patios and balconies particularly well. Thanks to these advantages you can enjoy many hours relaxing in the most beautiful shade.



### End cap insert in polished chrome

That certain something for your markilux 990.



### Wall sealing profile

The slim aluminium profile in the same colour as the awning closes the gap between the awning and the wall, allowing rain to be discreetly drained off via the awning.



MX\_990



**Cassette awning**  
max. 500 × 300 cm

**Arm technology**  
twin steel-link chain,  
optionally with Bionic tendon

**Options**  
end cap insert in polished chrome,  
valance

**Cassette awning**  
max. 700 × 400 cm

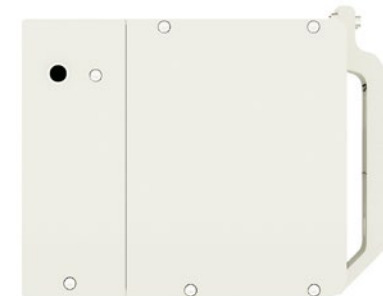
**Arm technology**  
Bionic tendon

**Options**  
valance,  
coupled awning





MX\_3300



**Angular design**

Precise top or face fixture in a reveal or niche means that the markilux 3300 can blend perfectly into its structural surroundings.

**High impact.**  
**Low maintenance.**

**markilux 3300**

If you are convinced that an awning cannot be visually merged into its architectural surroundings, the markilux 3300 will prove you wrong. Depending on the structural situation, this designer awning, with its smooth front profile, can disappear completely into a wall or precisely into a recess. When extended, it comes into its own with dimensions of up to 700 × 400 cm. And you can shade even larger areas by coupling up to three single awnings together. Discover how practical the markilux 3300 can be, and make this awning a big hit in your home.



**markilux 1710 stretch**

For great performance on narrow patios, balconies and in recesses: thanks to the two crossover arms even awnings with a narrow width can extend considerably further.



**Polished chrome fittings**

Side caps matching the awning colour or deliberately emphasised in finely polished chrome. This awning can simply wear anything.



MX\_1710



## Great performance. And beautiful details.

### markilux 1710

The markilux 1710 interprets the classic awning shape in a contemporary manner. The conspicuously round torque bar merges organically with the round cassette to form an elegant design feature. Because of its shape, the optional LED lighting in the folding arms and the timelessly elegant decorative features in polished chrome, the markilux 1710 will stand out on any patio thanks to its presence and well-designed details.



**Cassette awning**  
max. 700 x 350 cm

**Arm technology**  
Bionic tendon

**Options**  
LED Line in the folding arms,  
polished chrome fittings,  
coupled awning,  
stretch

### LED Line in the folding arms

Turn night into day. And make your al fresco lifestyle more comfortable and pleasant.





Good technology  
is about putting effort  
into saving effort.

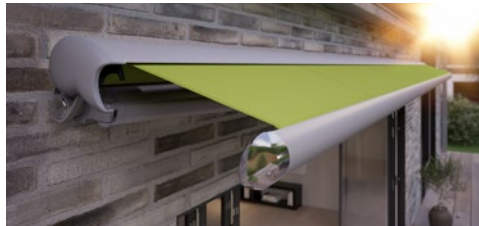


## Semi-cassette and Open Style Awnings

# One of the most beautiful. Far and wide.

## markilux 1600

This awning won the IF product design award for its harmonious, semi-circular design. And it looks unique when it's fully extended, too. As a semi-cassette awning, the markilux 1600 is open underneath. The top cover profile adapts itself to the angle of pitch of the awning and closes completely flush with the front profile when retracted, which protects the cover safely from rain. Take a look around your neighbourhood: your awning is probably the most beautiful far and wide.



### Polished chrome fittings

Underline the visual impact of your markilux 1600 in spectacular fashion – fitted to the front profile and torque bar.



## markilux shadeplus

The additional blind cover in the front profile of the markilux 1600 makes it possible to shut out low-lying sun and prying eyes.



## MX\_1600



**Semi-cassette awning**  
max. 710 × 400 cm

**Arm technology**  
twin steel-link chain,  
optionally with Bionic tendon

**Options**  
LED Line in the folding arms,  
LED Spots in the front profile,  
end caps in polished chrome,  
shadeplus,  
valance,  
coupled awning,  
stretch

### Lighting options

LED Line in the folding arms or tilting, dimmable spotlights integrated into the front profile guarantee evenings full of atmosphere.

Open style awning  
max. 500 × 300 cm

Arm technology  
twin steel-link chain



reddot design award  
honourable mention 2009



#### Valance

This additional decorative finish to the front profile lends this open style awning individual charm.

MX\_930

## Angling for perfection. Moving. Differently.

### markilux 930

This awning moves differently from the rest, because as you retract the markilux 930, the awning pivots into a horizontal position and disappears below the soffit. When extended, the angle of pitch can be set at up to 80 degrees – so if required, the awning can pivot almost to the vertical. The mobile markilux 930 is perfect for all balconies and eaves that require no additional protection of the awning cover or technology. Your new shading device bows to the sun – allowing you to enjoy being outside in the evening even when the sun is low in the sky.



### Pivoting mechanism

The just 122 mm high awning frame disappears discreetly under the soffit when retracted. Only when it starts to extend does the markilux 930 pivot into its preset pitch.

# Completely exposed. Magnificent still.

## markilux 1700

Whenever you would like to enjoy life outdoors, the open design of the markilux 1700 will create comfortable shading on your patio or balcony. Its organic design is elegant and timeless, and thanks to the stable torque bar, it opens up the option of connecting up to three awnings together, making it possible to shade large areas without any problem. Enjoy the pleasant atmosphere this much exposure brings.



### LED Line in the folding arms

The later it gets in the evening, the more pleasant the atmosphere. Dimmable LED Lines in the folding arms light up your favourite spot with charm.



### markilux 1700 stretch

Available for narrow recesses and openings, with two crossover folding arms providing greater projection than width.



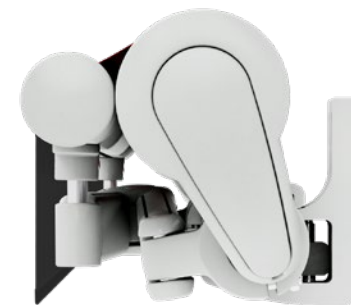
### Polished chrome fittings

Both the open style markilux 1700 and its enclosed sister, the markilux 1710, can be adorned on request with brightly shining end caps and trims.





## mx\_1700



**Open style awning**  
max. 700 × 400 cm

**Arm technology**  
Bionic tendon

**Options**  
LED Line in the folding arms,  
polished chrome fittings,  
coupled awning,  
stretch



German  
Design Award  
NOMINEE 2014



reddot design award  
winner 2012



**Aluminium coverboard**

Protects the cover from dirt and moisture.



**Pitch adjustment gear**

Changes the awning pitch from 4° to 85° using a crank handle.



**Valance**

This decorative piece of fabric conceals and protects the folding arm technology when the awning is retracted.



Select from one of the two standard frame colours: traffic white, RAL 9016, and metallic aluminium, RAL 9006, or at a surcharge, a RAL colour of your choice.

mx\_1300

## Beautiful. Simple.

### markilux 1300

Robust, reliable and fulfils all the expectations of a good awning. With the optional pitch adjustment gear, you yourself can determine the angle at which your awning cover protects you and your loved ones from the sun. And, if desired, a shadeplus, the versatile cover attached to the front profile to protect you from the low-lying sun and prying eyes. Beautiful simplicity! And simply beautiful protection against the sun.



**Open style awning**  
max. 700 × 400 cm

**Arm technology**  
twin steel-link chain

**Options**  
LED Line in the folding arms,  
shadeplus,  
pitch adjustment gear,  
aluminium coverboard,  
coupled awning

### LED Line in the folding arms and shadeplus

The culmination of a wonderful day: a lovely evening outside on the patio or balcony with friends.

A side thought.





Wind Protection and Extra Privacy



**Offers privacy, seclusion and wind protection**  
 Whether used as a free-standing room partition indoors or as a fixed feature outdoors, whether individually or grouped together – the markilux format is much more than just a blind. It is an appeal to sociability – in textile form.



**markilux format lift**

Vertically extending aluminium frame with textile fabric covering or transparent full foil window



**Framed in. No limits. Versatile.**

The markilux clamp system keeps the cover under tension. Basic frame sections can be added in modularly fashion.



mx\_format



**Wind protection and extra privacy**  
individual unit, max. 300 × 250 cm,  
extend it as you see fit,  
format slide, max. 600 × 250 cm,  
format lift, extending window section,  
max. 250 × 190 cm

**Options**  
triangular solutions  
for markilux awning systems,  
slide, lift,  
panorama window

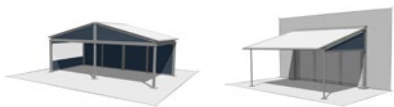
**Integrated into an awning system**

Vertical protection, perfectly tailored to markilux awning systems, on request possible as slide or lift version with movable sections and panoramic window.

Life has a lot of nice sides to it.  
**And now your home does, too.**

**markilux format**

Put up partitions to shield yourself from prying eyes – or create your very own personal space in the open air with its own textile cosiness. The markilux format puts a world of possibilities at your fingertips – and more than 250 fabric patterns at your disposal.



# The elegant way to show your neighbours where privacy begins.

## markilux 790

There are few seating areas outdoors that are protected on all sides from sun, wind and prying eyes. Therefore, this slim markilux side screen simply makes your life on the balcony or patio more comfortable and enticing. It can be extended in one smooth movement and is always by your side when you need it and feel like making use of its benefits.

### Side screen

extension: max. 450 cm

height: 90 – 250 cm

### Options

sloping top edge to the cover,

mobilifix (up to a height of 213 cm),

numerous fixture options



### Sloping top edge

The cover is available with a sloping top edge which can be cut to match the pitch of your markilux awning. It creates a beautiful, enclosed and protected area free from prying eyes and the glare of the sun.



MX\_790



**mobilfix**

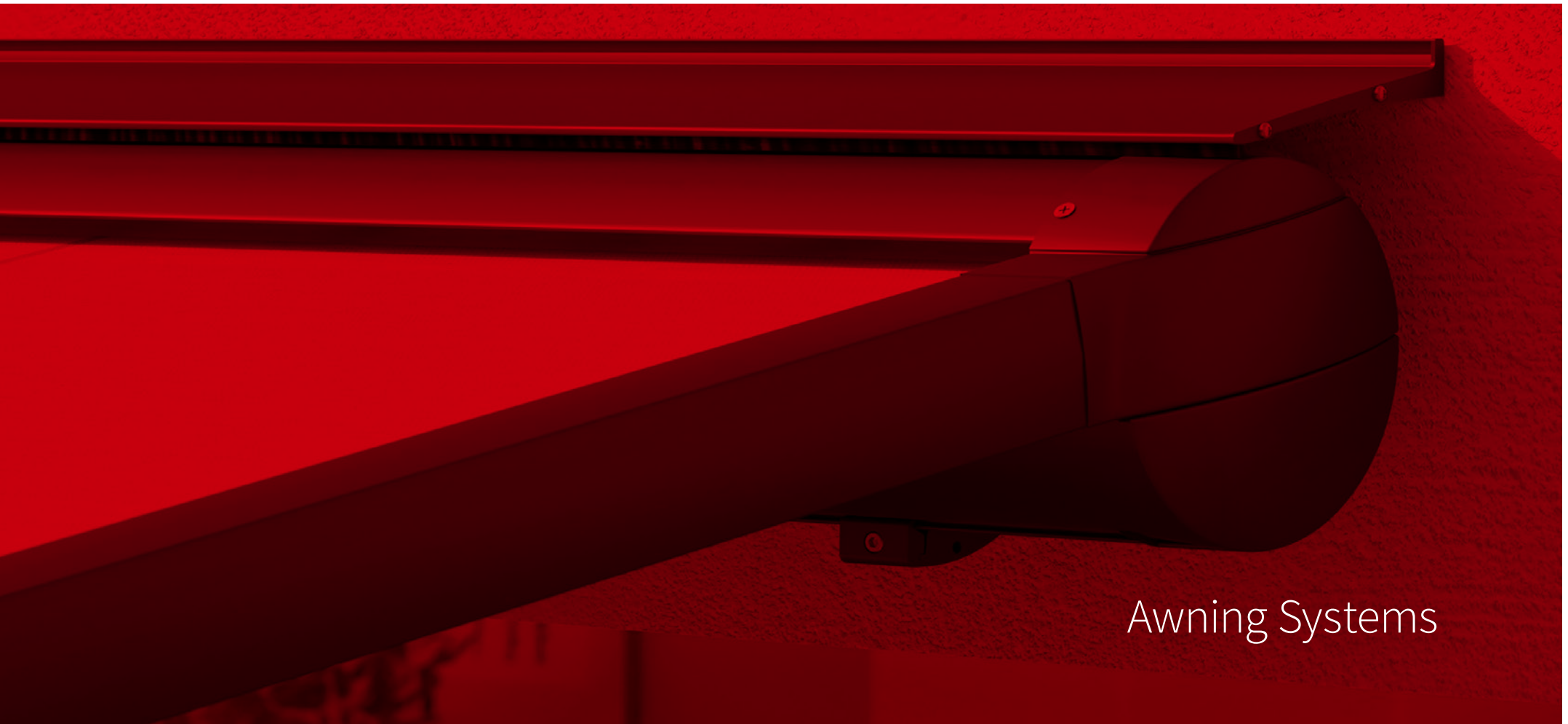
The moving support post with granite base plate stands secure, wherever you want it to.



**A broad range of fixture options**

markilux offers you a suitable option for all but every fixture situation.

For every requirement the right solution.  
Using the highest quality products.



Awning Systems

**Awning system**

max. 600 × 450 cm

max. 500 × 600 cm

**Options**

shadeplus,  
lateral wind protection  
and extra privacy as well as  
a broad range of comfort  
and design options,  
page 58



**markilux shadeplus**

The additional vertical blind integrated into the front profile simply blocks out low-lying sun and the glances of inquisitive neighbours.

## For all those, who have grandiose plans even if it is windy and wet.

### markilux pergola

The markilux pergola ranks top when it comes to solar and wet weather protection. The awning system on slender posts and with lateral guide tracks provides generous shading with an extension of up to 6 metres. At the same time, the markilux pergola defies wind and weather up to Beaufort 6 (wind resistance class 3). You have every opportunity to make your favourite outdoor place your very own with a markilux shadeplus as well as with a multitude of lighting options and different post shapes. No matter how strong the sun shines or the wind blows, with your markilux pergola you can enjoy life outdoors at any time.



### Coupled system

For all those who want even more shade: up to five single markilux pergola units can be joined side by side.



**Closed full cassette system**  
The cover disappears completely inside the cassette and is ideally protected. If anything can be even more impressive than the appearance of the awning, it is the way the markilux pergola functions faultlessly.



**markilux tracfix**  
One of many markilux refinements: the lateral cover guidance system that leaves no gap between the cover and the guide track. Gives an overall better appearance and improves wind stability.



**markilux shadeplus**

Blocks out glare from the sun and prying eyes in an instant.



**An “all-round” achievement**

The square, compact cassette protects the awning cover all round.





## Dependable. Anywhere. For anyone.

### markilux pergola compact

The pergola compact unites the graceful shape of the classic pergola with the latest in product design and the most advanced technology. The compact, space-saving awning system on slender support posts and with lateral guide tracks, which always keep the cover taut, is ideal for smaller patios. The markilux pergola compact invites you to lounge and take it easy. Attractive and functional solar protection. Anywhere. For anyone.



**Awning system**  
max. 450 × 400 cm

**Options**  
shadeplus,  
lateral wind protection and  
extra privacy as well as a broad  
range of comfort and design  
options, page 58



reddot design award  
winner 2017

### Always in the best light

Highlighted with LED Spots attached to the cassette or LED Line in the cassette,  
on the guide tracks and / or in the light bar guarantee endless hours of pleasure outdoors  
– even long after the sun has set.



**markilux sundrive**

An integrated solar module can drive the shadeplus motor in the markilux pergola. When the awning is extended, the front profile and the guide tracks finish perfectly flush with one another.

**Telescopic post**

For better water drainage, the front post of the markilux pergola can be lowered in a flash between 20 and 40 cm depending on the size. Can be operated by motor on request.

**LED Line**

Light for reading or informal get-togethers, optionally in the guide tracks and /or in the cover support tube, turns your night into day.



**Square posts**

As an alternative to round posts, square ones fulfil the desire for clean straight lines.

**Ballast boxes**

Give your markilux pergola reliable stability when fitting the front posts to foundations is not possible or desired.

**Stainless steel crank**

Bring the adjustable posts to the desired height in no time at all. Optionally operated by motor.

**LED Spots attached to the light bar**

The spotlights provide perfect contrast lighting in the evening hours. And they can be pivoted and dimmed, of course!



**markilux shadeplus**

The vertical protection against sun and prying eyes – up to 230 cm in height – creates a private room outdoors with its own special ambience.



#### Slender appearance

Design reduced to the essence.  
The cover safely tucked away.



#### Well thought through

Water drainage from the cover via the integrated gutter and support posts assured from a very low pitch of only 5°.



#### Attractive protection majestically full of fresh air

A waterproof awning cover leaves you perfectly prepared for a comfortable and relaxed season – al fresco. Allow your markilux specialist dealer to give you professional advice.



## Great prospects ahead.

### markilux pergola stretch

The markilux pergola stretch offers an impressive take on sun and wet weather protection. The cover is perfectly integrated into the minimalistic, high value awning system. The rhythmical, space-saving cover folding technology makes it possible to shade large areas and creates a special and impressive atmosphere. Manifold customisation options mean that the markilux pergola stretch will invariably catch your eye.



**Awning system**  
max. 700 × 700 cm

**Options**  
LED Line in the cover support profiles,  
cross-beam with heaters and /or LED lighting,  
vertical cassette roller blinds,  
lateral wind protection and privacy  
as well as many more comfort and  
design options

### Truly imposing with an impressive appearance

Versatile implementation in varying weather conditions. The LED lighting, heaters and lateral protection options allow the atmosphere to be adapted as the situation requires.



### Awning system

depends on the awning model

max. 600 / 610 × 300 cm

max. 500 / 510 × 350 cm

### Arm technology

depends on the awning model

### Options

depends on the awning model,  
the flex version can be rotated  
by up to 335 degrees



### flex option

The markilux planet flex can be rotated and positioned wherever you need shading – by up to 335 degrees with the Easy-Go lever.



## Always revolving around your requirements.

### markilux planet

The markilux planet is a parasol and awning in one. It's an eye-catcher that provides perfect shading for your room outdoors. This awning-cum-parasol protects you from solar radiation with exceptional reliability; it is extremely sturdy, yet flexible in its deployment. With the Easy-Go lever in the flex variant, you can simply rotate it by up to 335 degrees – so you can have shade wherever it is required. The slim post carries the selected markilux designer awning with ease and the combination of functionality and design is impressive. The markilux planet is further proof that everything revolves around your requirements at markilux.



### markilux shadeplus

This versatile protection against low-lying sun, inquisitive glances and glare in the front profile allows you to enjoy the late afternoon sun without having to worry about prying eyes.



### Awning system

maximum post separation up to 600 × 600 cm  
with two independently functioning awnings,  
as a 1-field unit up to 300 × 600 cm,  
overall height 260 cm,  
other heights are possible

### Options

LED lighting, wall connection,  
vertical cassette roller blinds,  
lateral wind protection and extra privacy,  
panorama window



### On request – that little bit more

Whether in combination with heaters,  
atmosphere-creating LED Line or LED Spot lighting:  
the markilux markant ticks every box in creating  
a feel-good space in the open air.



### Versatile in both form and function

As stand-alone unit or integrated into the existing architecture, the markilux markant makes a big impression in any situation.  
Detailed information can be provided by a markilux specialist dealer near you or otherwise go to [markilux.com](https://www.markilux.com)

markilux markant



## Make the rain **take a detour.**

### markilux markant

The free-standing awning system markilux markant is protection against sun, wind and rain, that can be tailored to your precise requirements. The awning, integrated into the frame, lends the system a textile character, its fabrics making it possible to create the pleasant colour ambience you have in mind. The markilux markant offers protection, security, freedom, outstanding looks and comfort in a purist design.



### Your very own personal space in the open air

Using vertical cassette roller blinds, wind protection and privacy screens in combination with the markilux markant, it is possible to create your very own outdoor space.



#### markilux syncra uno

Two feet. One awning. No problem!

The markilux syncra uno proves itself a stable base even with just one “wing”.



#### markilux syncra pergola

With the additional posts at the front and the tracfix lateral cover guidance system, this option offers particular advantages in terms of size and wind stability.



#### Detailed information

Detailed information about the markilux syncra is available from your markilux specialist dealer and at [markilux.com](https://www.markilux.com)



**Awning system**

depends on the awning model up to 60 m<sup>2</sup>,  
as a coupled unit even larger areas are possible

**Arm technology**

depends on the awning model

**Options**

depends on the awning model,  
uno (only one awning/ pergola),  
flex (with ballast boxes),  
posts round or square,  
lighting,  
foot plate covers,  
coupled awnings



**markilux syncra flex**

The ballast boxes allow installation  
without concrete foundations on site.

This will stand  
on its own two feet for you.

**markilux syncra**

Generous shading right where you need it. That is the promise made by the markilux syncra. And one it keeps. As a single unit, it will provide shade for up to 60 m<sup>2</sup>; as a coupled awning even larger areas are no problem. This free-standing awning stand system literally stands on its own two feet: two round or square posts and a massive cross-beam ensure reliable stability.

Depending on the requirements, one or two folding-arm awnings or markilux pergolas can be attached to it.

This awning system is either firmly anchored to the ground (“fix”) or installed using ballast boxes (“flex”). No matter which variant you choose, you can always count on the markilux syncra.

# When you need just that little bit more.

## markilux construct

Situations can arise in which a standard model is not enough to meet your particular requirements. In situations like these, bespoke solutions are required. The awning system markilux construct is extremely versatile and flexible. Different modules can be combined with different awning systems to create a veritable awning landscape. You don't have to compromise when it comes to size. You can choose between round and square posts and the range of available accessories is impressive. Describing the markilux construct is all but impossible – you simply have to experience it.

### Awning system

almost unlimited thanks to the modular and flexible frame system

### Options

depending on the awning model, vertical roller blinds, wind protection and extra privacy, panorama windows, round or square posts, lighting, base plate covers



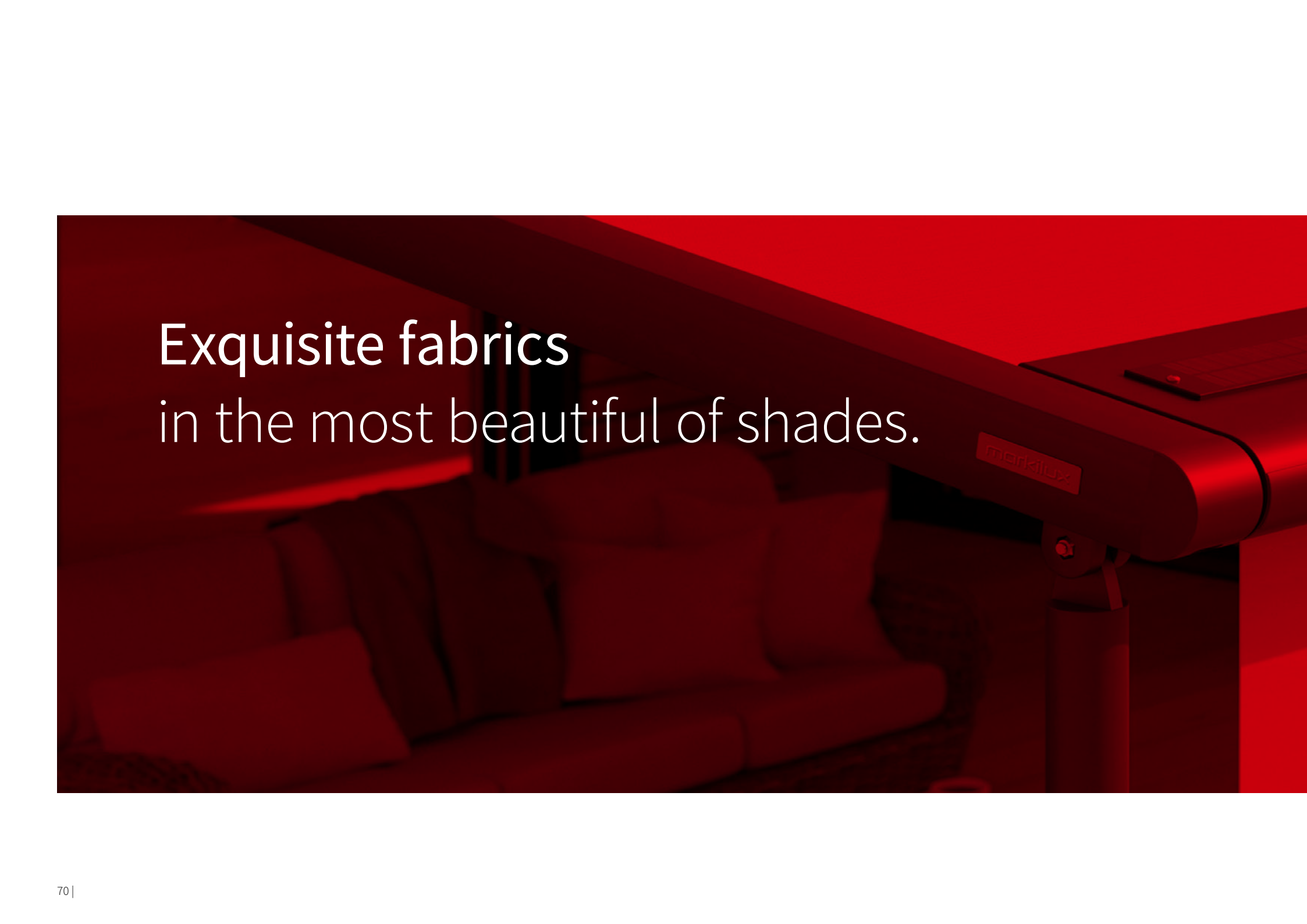
### Designer awnings to your own exact specification

Different conservatory and folding-arm awnings are possible and can be combined with vertical roller blinds or side screens according to your precise wishes.



**Detailed information**

Speak to your local markilux specialist dealer or allow your enthusiasm to build by going to [markilux.com](https://www.markilux.com)



Exquisite fabrics  
in the most beautiful of shades.



Awning Covers | Frame Colours



**sunsilk**

Brilliant vividness. Silky smooth surface.  
Unique luminosity.



**sunvas**

Soft glow. Textile-like to the touch.  
Textile character and natural appearance.



**specials**

Semi-transparent, heat-reflecting, air permeable,  
highly water resistant and flame-retardant materials.



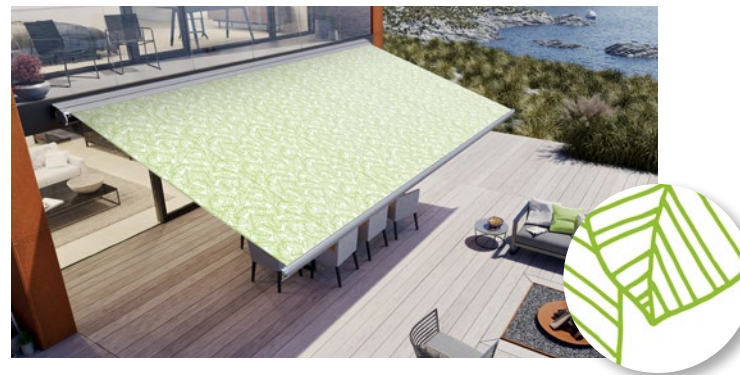
**markilux visutex collection 50/4/me**

Inspiration drawn from fashion, architecture, colour and naturally occurring special effects. 50 innovative fabrics conjure up your personal awning heaven in the tried-and-tested qualities sunsilk and sunvas – available exclusively from markilux.

# The most beautiful fabric between heaven and earth.

## markilux awning covers

The colour and quality of the awning fabric are what help make the ambience on your patio something special. Colour nuances, patterns and textures succeed in creating that uniquely special effect by virtue of their brightness and hue. As a leading manufacturer of high-grade awning fabrics with almost 100 years of experience in the manufacture of textiles, markilux offers an unparalleled variety. The markilux textile design team is constantly developing new patterns in line with the latest trends, which are nevertheless characterised by their timeless appeal. Among the more than 250 patterns in thematically coordinated colour families, you are certain to find your very own and most beautiful fabric between heaven and earth.



visutext

smartart

Art. Full.  
Visual highlights for your patio.  
Art, pure and simple.



| markilux visutext



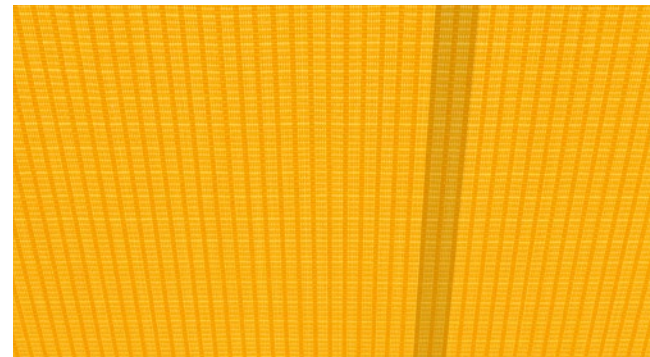
| markilux perfortex



### Functionality can be so beautiful

During the production of our awning fabrics, we leave nothing to chance. We add a final finishing flourish to the fabric with a special formula developed in house. This finish gives our awning covers incredible longevity and resistance to rain, light and fluctuations in temperature. Certified in accordance with Oeko-Tex standard 100, markilux awning covers are guaranteed free from harmful dyes and chemicals.

With an Ultraviolet Protection Factor (UPF) of 50+, all solid markilux awning covers made from sunsilk or sunvas offer the highest possible degree of UV protection offered by fabrics. Your skin's own protection factor is enhanced by a factor of more than 50. This allows you to enjoy sunny days for longer, without putting your health at risk.



#### Self-cleaning effect

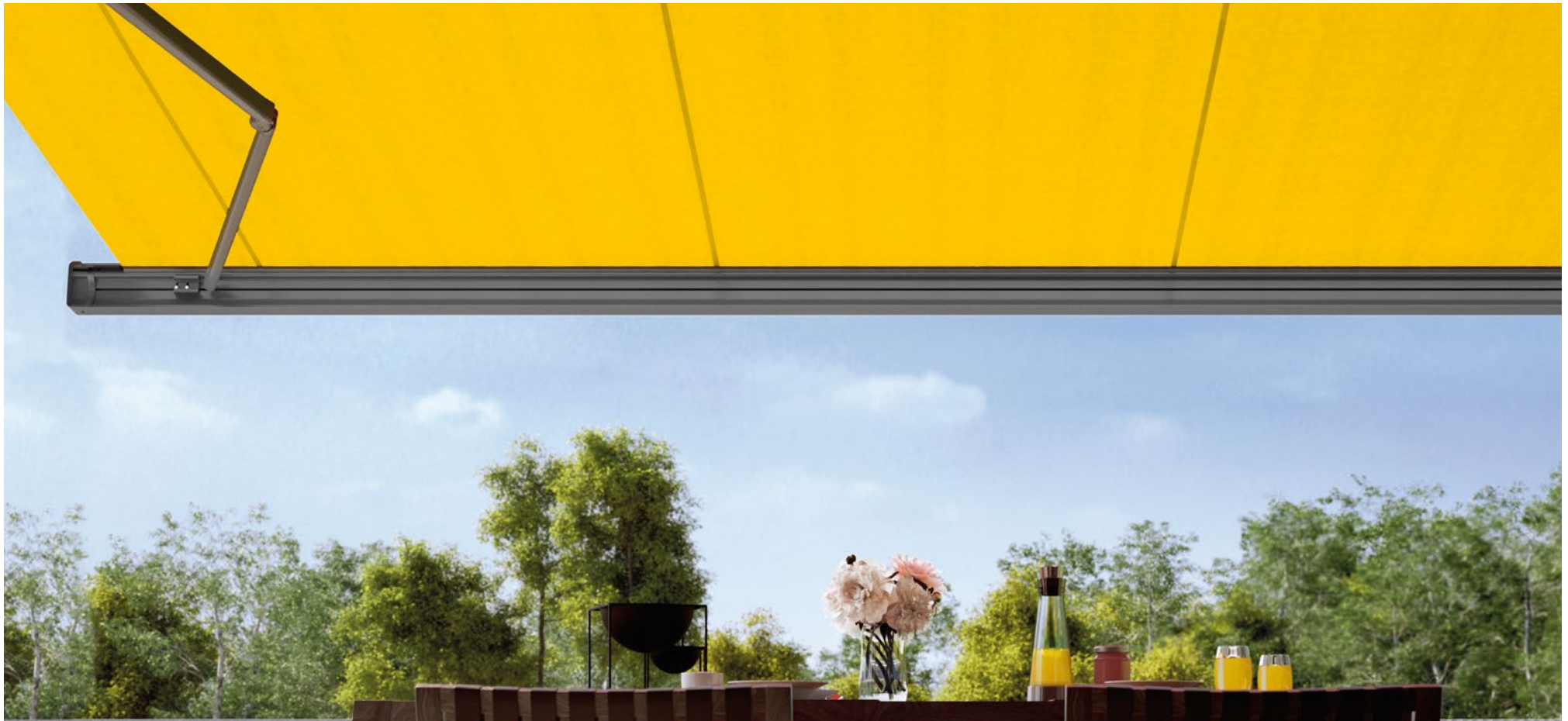
Water droplets pick up dirt particles and run off the awning cover taking the dirt with them (the awning must be set at a pitch of at least 14 degrees), ensuring you can enjoy your beautiful fabric for a long time to come.

#### Bonded awning covers

Panel joints bonded together ultrasonically ensure a consistent, unobtrusive appearance. The excellent resistance to water, light and fluctuations in temperature ensures that the service life of the cover is extended substantially.

#### Light and weather resistance and resistance to fading

High-tech yarns dyed right to the core and a high-grade finish developed in house guarantee the most stunning shade in which to relax.



**markilux 3D App and Awning Cover Finder**

markilux develops, manufactures and tests its awning cover fabrics in its own facility in Germany. Your own personal favourite can be discovered amongst the more than 250 fabric patterns in the showroom of your markilux specialist dealer, in the markilux 3D App and in the Awning Cover Finder at [markilux.com](https://www.markilux.com)



Traffic white

RAL 9016



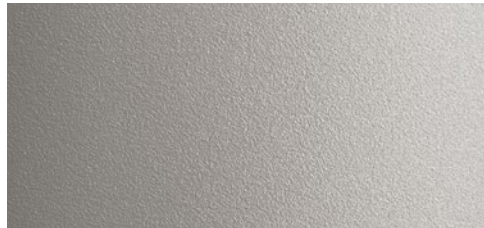
Off-white textured finish

5233



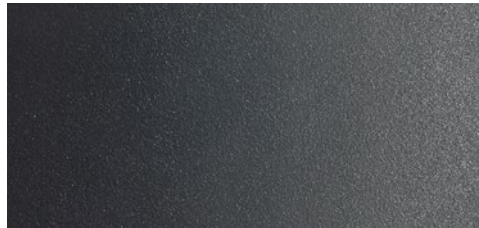
Metallic aluminium

RAL 9006



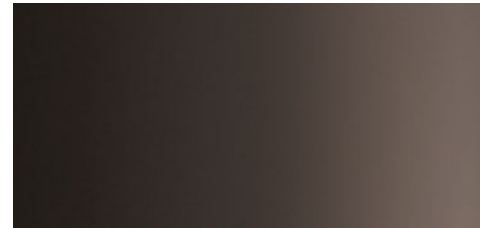
Stone grey metallic

5215



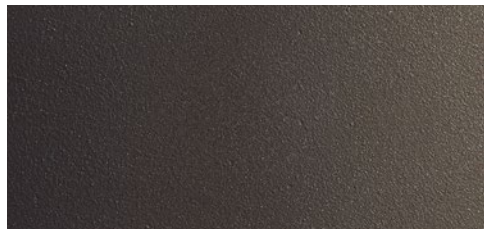
Anthracite metallic

5204



Grey brown

similar to RAL 8019



Havana brown textured finish

5229



RAL colour of your choice

© RAL Bonn 2021





## Sounds perfect. Tone in tone.

### **markilux frame colours**

The awning frame colour complements and enhances the colour of the fabric and creates a perfect link to the architectural surroundings. From a variety of shades of white through to the timelessly elegant anthracite, a broad range of colours is available to you. And if you want to create your own particular colour scheme? No problem! We will gladly manufacture your dream awning in your own personal shade.

Our high-grade powder coating finish is guaranteed for any awning colour you choose.

### **Matching every architectural style and customer demand**

All markilux frame colours are available without surcharge.\*

Non-standard colours can be selected on request.

\* markilux 1300: only available in traffic white, RAL 9016 and metallic aluminium, RAL 9006

Beauty lies not in size,  
but in attention to detail.



Operation | Options | Accessories

# Make it easy on yourself. And comfortable.

## **markilux operation**

Fulfils the highest expectations and can be used in any weather conditions. The choice is yours: manual operation (optionally spring assisted), switch-operated motor or remote-controlled motor are all possible on most models. And if you wish, light, wind and rain sensors will control your markilux designer awning according to the prevailing weather conditions. Alternatively, you simply operate it at home yourself and this can even be done when you're out and about via your smartphone or tablet.

Your markilux specialist dealer will advise you on any questions you may have with regard to operating markilux awnings in comfort and will gladly explain to you why awning motors fitted with silentec technology are deafeningly quiet.

Availability depends on the model



## **Smart control**

Fashion your own, personal patio atmosphere with awning, light, warmth and lots more besides. In comfort using io technology in conjunction with your smartphone or tablet – whether you are relaxing on your patio or away from home.



**markilux remote control**

Comfort can be so easy. Awning, shadeplus, light and warmth at the touch of a button.



**silentec motor**

Deafeningly quiet. Considerably reduces the noise the motor makes when extending and retracting the awning. Availability depends on the model.



**markilux vibrabox**

Intelligent, sensitive and independent of the mains. The vibrabox is an inertia sensor and, depending on wind load, retracts the awning.



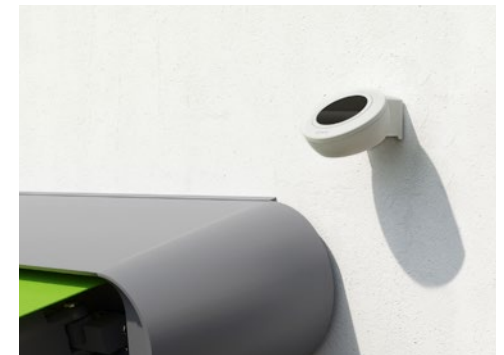
**Light and wind sensor**

According to the prevailing weather conditions, this intelligent control system will extend and retract your awning automatically.



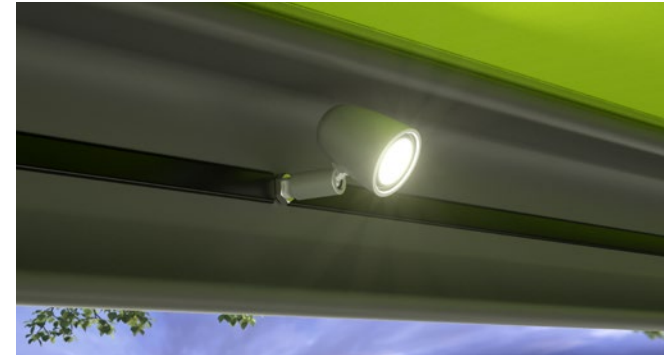
**Light sensor**

Intelligent control of your blind or awning according to the intensity of the sun's rays. Battery operated, so there is no need for a mains power supply.



**Rain sensor**

The awning retracts automatically in the case of precipitation. This intelligent control mechanism protects the cover on your awning.



### LED Line in the cassette

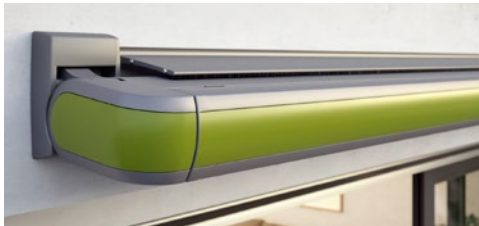
Appealing, ambient light in the form of an LED Line integrated into the cassette. Reserved and understated during the day. Dazzlingly beautiful and cosy in the evening.

### LED Line in the folding arms

A highlight accompanying many a pleasant moment. The dimmable LED Lines set the scene on your patio long after the sun has retired for the night.

### LED Spots

Under the cassette or in the front profile: LED Spots that can be pivoted and dimmed create a lovely atmosphere on your patio in the evening.



### Wall sealing profile

This slim aluminium profile closes the gap between the awning and the wall, allowing rain to be discreetly drained off via the awning.

### Colour combinations and polished chrome fittings

The cassette and styling profile are available in attractive colours and can be combined with one another. Stylish end caps and end cap inserts in polished chrome are further eye-catchers.

### stretch

The perfect solution for narrow patios, recesses or balconies. Thanks to the two crossover arms even awnings with a narrow width can extend further.

### Coupled awnings

Depending on the model, up to three awnings can be joined together offering even more shade. A special roller blind elegantly closes the gap between the two awning covers.



#### **markilux shadeplus**

Simply shut out the low-lying sun and prying eyes and enjoy the warmth of the day for even longer. This additional cover descends vertically downwards from the front profile to create a wonderfully private room outdoors. Depending on the model, it is also available with a switch-operated / remote-controlled motor.

Availability depends on the model

## More freedom. More free space.

#### **markilux options**

Your markilux designer awning, configured and tailored to your own personal and individual desires and preferences. Not a standard product, but perfect solar protection with a very personal touch. Unique and special.

# Tension. Pure.

## markilux arm technology

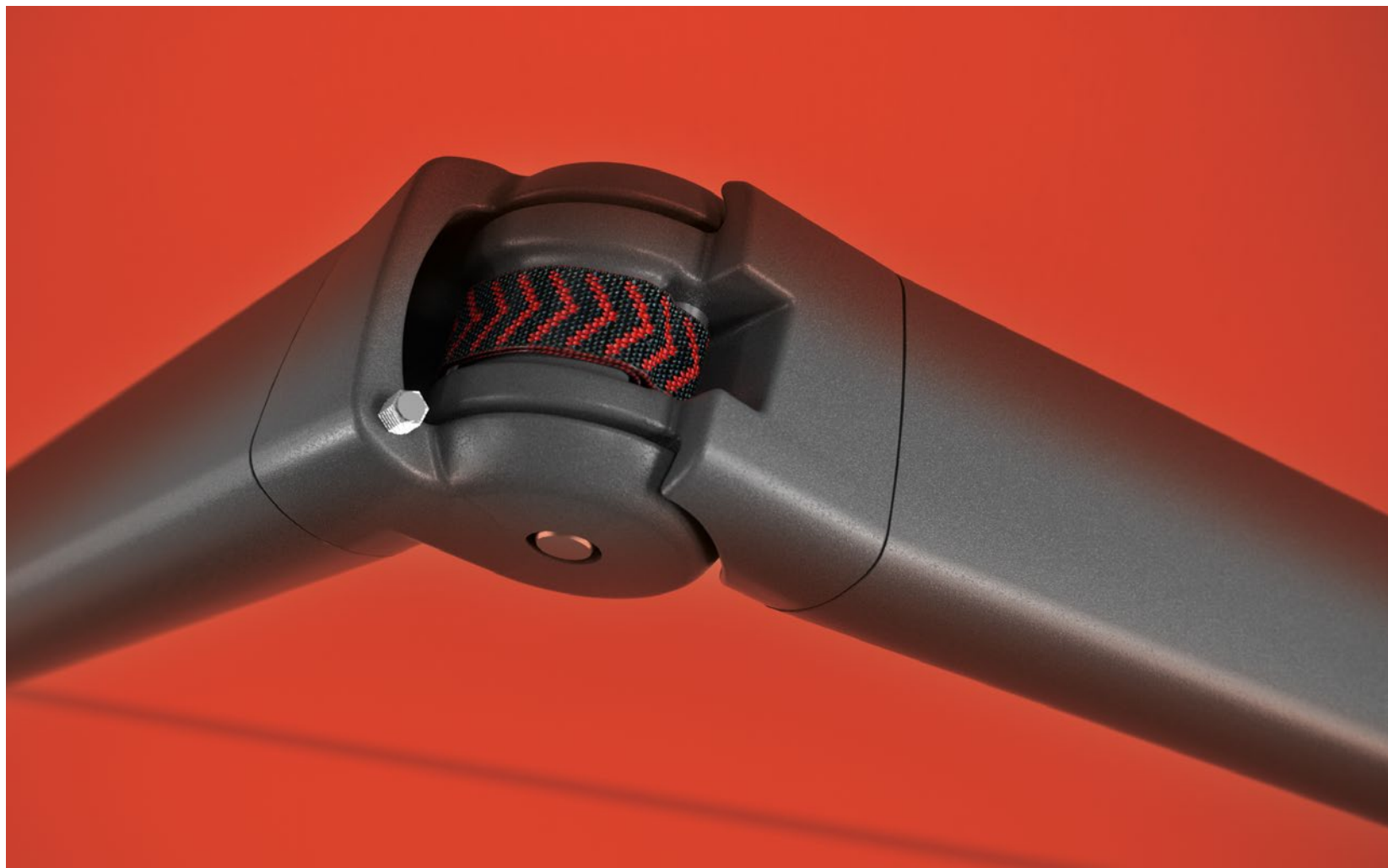
Highly durable, virtually noiseless and always perfectly geared to provide optimum cover tension.



## Twin steel-link chains

On the market for decades and proven in all types of weather: the twin round steel-link chains lie protected in the folding arms.

The availability of each type depends on the model



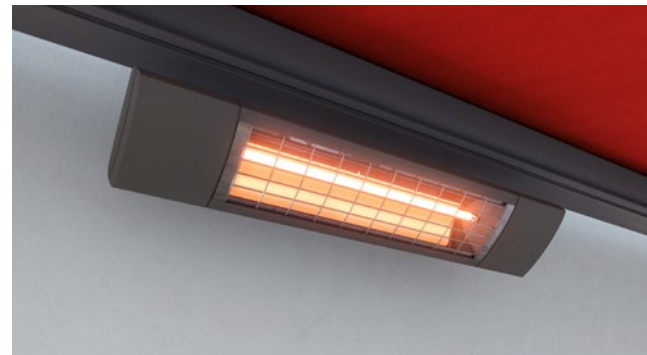
## Bionic tendon

Inspired by nature, the bionic tendon, developed by markilux and made from high-tech textile fibres, delivers optimum power transference to the front profile and provides friction-free and virtually silent flexion of the arms. It impresses by virtue of its safeness and longevity.

# A relaxed al fresco lifestyle. You too will be impressed.

## markilux accessories

Setting new standards for the stylish shading of your favourite spot in the garden. Detailed information and professional advice can be acquired from your local markilux specialist dealer or at [markilux.com](http://markilux.com)



## markilux infrared heater

Feel the warmth in an instant and enjoy the evening outside for even longer. Either as stand-alone unit (1400 Watt) or installed under your awning (2500 Watt, the latter optionally dimmable in three stages).



## markilux LED Spotline

The elegant light bar in a powder-coated aluminium housing, that can be fitted almost anywhere. The LED Spots can be swivelled and dimmed. Available in two sizes: 180 cm with 3 spotlights and 300 cm with 5 spotlights.

A red-tinted photograph of a window. The window is partially open, and a view of trees is visible through the bottom pane. The text is overlaid on the upper part of the image.

A clear overview.  
Opening up exciting prospects.



## Technical Specification

# markilux Designer Awnings

markilux MX-1 compact  
Page 14



markilux 6000  
Page 18



markilux 5010  
Page 20



markilux 970  
Page 22



markilux MX-3  
Page 24



markilux 990  
Page 30



|                            |  |  |   |  |  |  |
|----------------------------|--|--|---|--|--|--|
| Max. width × projection    | 700 × 415 cm   | 700 × 400 cm   | 700 × 400 cm  | 600 × 300 cm<br>500 × 350 cm   | 600 × 300 cm<br>500 × 350 cm   | 500 × 300 cm   |
| Operation<br>optional      | Remote-controlled motor*<br>+ silentec motor   | Manual operation<br>+ servo-assisted manual operation<br>+ switch-operated motor<br>+ silentec motor<br>+ remote-controlled motor*   | Manual operation<br>+ servo-assisted manual operation<br>+ switch-operated motor<br>+ silentec motor<br>+ remote-controlled motor*                              | Manual operation<br>+ servo-assisted manual operation<br>+ switch-operated motor<br>+ remote-controlled motor*   | Manual operation<br>+ servo-assisted manual operation<br>+ switch-operated motor<br>+ remote-controlled motor*   | Manual operation<br>+ servo-assisted manual operation<br>+ switch-operated motor<br>+ remote-controlled motor* |
| Arm technology<br>optional | Bionic tendon  | Bionic tendon  | Twin steel-link chains<br>+ Bionic tendon   | Bionic tendon  | Bionic tendon  | Twin steel-link chains<br>+ Bionic tendon  |
| Fixture type<br>optional   | Face fixture   | Face/top/eaves<br>+ wall sealing profile   | Face/top/eaves<br>+ wall sealing profile  | Face/top/eaves<br>+ niche  | Face/top/eaves<br>+ wall sealing profile   | Face/top/eaves<br>+ wall sealing profile   |
| Options**                  | <ul style="list-style-type: none"> <li>+ LED Line/Spots in the front profile</li> <li>+ LED ambient lighting</li> <li>+ LED Spots below the cassette</li> <li>+ colour combinations</li> <li>+ Selection MX</li> <li>+ shadeplus</li> <li>+ valance</li> </ul> | <ul style="list-style-type: none"> <li>+ LED spotlights in the front profile</li> <li>+ end cap insert in stainless steel mesh</li> <li>+ end cap trim in polished chrome</li> <li>+ shadeplus</li> <li>+ valance</li> <li>+ coupled awning</li> </ul> | <ul style="list-style-type: none"> <li>+ front profile end caps in polished chrome</li> <li>+ shadeplus</li> <li>+ valance</li> <li>+ coupled awning</li> </ul> | <ul style="list-style-type: none"> <li>+ LED Line in the cassette</li> <li>+ LED Spots below the cassette</li> <li>+ anodised front panels</li> <li>+ shadeplus</li> </ul> | <ul style="list-style-type: none"> <li>+ LED Line in the cassette</li> <li>+ LED Spots below the cassette</li> <li>+ coloured front panels and end cap insert</li> <li>+ Selection MX</li> </ul> | <ul style="list-style-type: none"> <li>+ end cap insert in polished chrome</li> <li>+ valance</li> </ul>       |

\* Remote-control, smart (app) or intelligent control possible

\*\* Some options cannot be combined

**markilux 3300**  
Page 32



700 × 400 cm

**Manual operation**

- + servo-assisted manual operation
- + switch-operated motor
- + silentec motor
- + remote-controlled motor\*

**Bionic tendon**

**Face/top/eaves**

- + wall sealing profile
- + niche

- + valance
- + coupled awning

**markilux 1710**  
Page 34



700 × 350 cm

**Manual operation**

- + servo-assisted manual operation
- + switch-operated motor
- + remote-controlled motor\*

**Bionic tendon**

**Face/top/eaves**

- + wall sealing profile

- + LED Line folding arms
- + end caps and end cap insert in polished chrome
- + coupled awning
- + stretch

**markilux 1600**  
Page 38



710 × 400 cm

**Manual operation**

- + servo-assisted manual operation
- + switch-operated motor
- + remote-controlled motor\*

**Twin steel-link chains**

- + Bionic tendon

**Face/top/eaves**

- + wall sealing profile

- + LED Line folding arms
- + LED spotlights in the front profile
- + end caps in polished chrome
- + shadeplus
- + valance
- + coupled awning
- + stretch

**markilux 930**  
Page 40



500 × 300 cm

**Manual operation**

- + servo-assisted manual operation
- + switch-operated motor
- + remote-controlled motor\*

**Twin steel-link chains**

**Face/top**

- + LED Line folding arms
- + LED spotlights in the front profile
- + end caps in polished chrome
- + shadeplus
- + valance
- + coupled awning
- + stretch

**markilux 1700**  
Page 42



700 × 400 cm

**Manual operation**

- + servo-assisted manual operation
- + switch-operated motor
- + remote-controlled motor\*

**Bionic tendon**

**Face/top/eaves**

- + LED Line folding arms
- + end caps and end cap insert in polished chrome
- + coupled awning
- + stretch

**markilux 1300**  
Page 44



700 × 400 cm

**Manual operation**

- + servo-assisted manual operation
- + switch-operated motor
- + remote-controlled motor\*

**Twin steel-link chains**

**Face/top/eaves**

- + aluminium coverboard

- + LED Line folding arms
- + shadeplus
- + pitch adjustment gear
- + coupled awning



**markilux format** – Wind protection and privacy screen | page 48  
Individual unit: maximum 300 × 250 cm, can be extended, can be repositioned  
Fixture: fixed in place / stand alone or integrated into a markilux awning system  
Optional: + triangular solutions, slide, lift, panorama window



**markilux 790** – Side screen | page 50  
Extension: maximum 450 cm, Height: 90 – 250 cm  
Fixture: face or reveal fixture  
Optional: + sloping top edge, mobilifix

# markilux Awning Systems

markilux pergola  
Page 54



markilux pergola compact  
Page 56



markilux pergola stretch  
Page 60



markilux planet  
Page 62



markilux markant  
page 64



markilux syncra  
Page 66



|                                |  |   |   |   |  |   |
|--------------------------------|--|---|---|---|--|---|
| <b>Max. width × projection</b> | 600 × 450 cm<br>500 × 600 cm   | 450 × 400 cm  | 700 × 700 cm  | 600 / 610 × 300 cm<br>500 / 510 × 350 cm  | 600 × 600 cm (2 fields)<br>300 × 600 cm (1 field)  | Up to 60 m <sup>2</sup><br>depends on the awning model  |
| <b>Awning system</b>           | <b>pergola</b><br>tracfix cover guidance<br>with lateral guide tracks<br>on slim posts   | <b>pergola compact</b><br>tracfix cover guidance<br>with lateral guide tracks<br>on slim posts  | <b>pergola stretch</b><br>textile weather protection<br>the cover folds together<br>on track-guided support posts   | <b>Awning-cum-parasol</b><br>with one markilux designer awning<br>as desired              | <b>Textile weather protection</b><br>free-standing, purist in design,<br>on four posts with<br>integrated designer awning                | <b>Awning stand system</b><br>with two posts and one/two<br>markilux designer awnings<br>or pergolas as desired       |
| <b>Operation</b><br>optional   | <b>Awning motor</b><br>+ silentec motor<br>+ remote-controlled motor*  | <b>Awning motor</b><br>+ remote-controlled motor*   | <b>Remote-controlled motor*</b>   | <b>Depends on the awning model</b>  | <b>Remote-controlled motor*</b>  | <b>Depends on the awning model</b>  |
| <b>Arm technology</b>          | —  | —   | —   | <b>Depends on the awning model</b>  | —  | <b>Depends on the awning model</b>  |
| <b>Fixture type</b>            | <b>Face / top / eaves</b><br>+ wall sealing profile  | <b>Face / top / eaves</b><br>+ wall sealing profile   | <b>Face / top / eaves</b><br>including wall sealing profile<br>and system coverboard  | <b>Free-standing</b><br>on concrete foundation  | <b>Free-standing</b><br>on concrete foundations<br>or attached to a wall   | <b>Free-standing</b><br>on concrete foundations<br>or ballast boxes   |
| <b>Options**</b>               | + LED Line / LED Spots<br>+ shadeplus<br>+ wind protection and extra privacy<br>+ round or square posts<br>+ telescopic posts<br>+ ballast boxes<br>+ coupled system | + LED Line / LED Spots<br>+ shadeplus (manual)<br>+ wind protection and extra privacy<br>+ round or square posts<br>+ telescopic posts<br>+ ballast boxes | + LED Line / LED Spots<br>+ vertical roller blinds<br>+ wind protection and extra privacy<br>+ cross-beam with heaters<br>and LED lighting<br>+ coupled system<br>+ panorama window | <b>Depends on the awning model</b><br>+ flex (pivots 335°)<br>+ shadeplus<br>+ base cover | + LED Line / LED Spots<br>+ wall sealing profile<br>+ vertical roller blinds<br>+ wind protection and extra privacy<br>+ panorama window | <b>Depends on the awning model</b><br>+ uno<br>+ flex<br>+ round or square posts<br>+ base covers<br>+ coupled system |

\* Remote-control, smart (app) or intelligent control possible

\*\* Some options cannot be combined

markilux construct

page 68



Almost unlimited

Frame system

modular and flexible

Depends on the awning model

Depends on the awning model

Free-standing

on concrete foundation

Depends on the awning model

- + vertical roller blinds
- + wind protection and extra privacy
- + panorama window
- + round or square posts
- + base covers



The sun smiles down on an awning. Life smiles on you under a markilux.

Discover all the options in the showroom of your local markilux specialist dealer or at [markilux.com](https://www.markilux.com)

**The best under the sun. Create the most alluring shade in the world.**

Innovative technology and the best quality imaginable, with a multitude of accolades and awards to its name.

Ideas, detailed information, competent advice and the most delightful of awning fabrics can be found in the showroom of your markilux specialist dealer and at [markilux.com](https://www.markilux.com)