



SOLAR GAIN

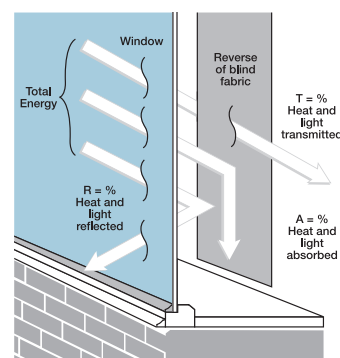
The amount of heat increase resulting from solar energy entering a room. It is the total of three separate parts - the amount of energy transmitted directly into the room, the energy which is absorbed by the blind and the proportion of energy which is absorbed by the window.

SHADING CO-EFFICIENT

The solar heat gain with the blind at the window divided by the solar heat gain with no blind at the window. The lower the shading co-efficient, therefore, the higher the efficiency of the fabric. The test results in the table above have been achieved using a single 6mm glass glazing system.

GTOT

When the G-value (a measure of total solar energy that passes through the glazing system and the blind fabric) of the glazing is combined with the value of the shading.



Manufactured in the UK

CI/SfB 1976 reference by SfB Agency

(76.7)	X
--------	---



DIM OUT

CARNIVAL

ROLLER, ROMAN, VERTICAL AND PANEL BLINDS

A popular, flame retardant, plain range comprising of 48 colours. Carnival features Ultra-Fresh™*, Pollergen™, Greenshield and CCT®.

Composition: 100% Polyester

Fabric Width: 2.05m (80")

Louvre Width: 89mm (3½") or 127mm (5")

Weight: 255g/m² (7.5oz/yd²)



LOUVOLITE

CARNIVAL

SOLAR, OPTICAL AND COLOUR FASTNESS PROPERTIES

	SOLAR			OPTICAL			UV block	SC	CF	DIM out	G VALUE				G TOT
	T _s	R _s	A _s	T _o	R _o	A _o					SG	DG	TG	DG LE	
Acacia	14	55	31	8	54	38	100	0.47	6	3	0.41	0.42	0.38	0.39	0.22
Amber	15	57	28	9	54	37	100	0.45	5	3	0.40	0.41	0.37	0.39	0.22
Aqua	20	64	16	18	65	17	98	0.38	4	3	0.37	0.38	0.35	0.36	0.24
Birch	19	60	21	13	58	29	100	0.42	6+	3	0.39	0.40	0.37	0.38	0.24
Blush	18	65	17	11	63	26	100	0.37	4	3	0.36	0.37	0.35	0.36	0.22
Breton Blue	12	33	55	0	10	90	100	0.68	6	3	0.54	0.53	0.44	0.46	0.26
Buttercup	18	65	17	17	76	7	100	0.37	6	3	0.36	0.37	0.35	0.36	0.22
Cantaloupe	17	52	31	7	38	55	100	0.50	6	3	0.43	0.44	0.39	0.40	0.25
Caramel	13	57	30	5	52	43	100	0.45	6+	3	0.40	0.41	0.37	0.39	0.20
Chambray	12	48	40	1	25	74	100	0.54	4	3	0.45	0.45	0.40	0.41	0.23
Chartreuse	13	53	34	8	57	35	100	0.49	6+	3	0.42	0.43	0.39	0.40	0.22
Chelsea Red	15	43	42	2	16	82	100	0.58	6+	3	0.48	0.40	0.39	0.40	0.26
China White	15	75	10	13	86	1	100	0.28	6+	3	0.29	0.32	0.32	0.33	0.17
Chive	12	40	48	3	28	69	100	0.61	6	3	0.50	0.49	0.42	0.44	0.25
Clay	14	49	37	3	32	65	100	0.53	6+	3	0.45	0.45	0.42	0.41	0.24
Cloud	20	63	17	14	56	30	98	0.39	4	3	0.37	0.38	0.36	0.37	0.24
Cornflower	15	56	29	5	43	52	100	0.46	6+	3	0.40	0.42	0.38	0.39	0.22
Cream	16	71	13	16	82	2	100	0.31	6	2	0.32	0.34	0.33	0.34	0.20
Ecru	18	36	46	11	70	19	100	0.65	6	3	0.53	0.52	0.44	0.45	0.22
Emerald	10	36	54	0	16	84	100	0.65	6	3	0.52	0.51	0.44	0.45	0.24
Garden Green	12	46	42	4	35	61	100	0.56	6	3	0.46	0.46	0.40	0.42	0.23
Garnet	13	23	64	2	9	89	100	0.78	6	3	0.60	0.58	0.49	0.47	0.30
Iris	16	47	37	5	30	65	100	0.55	5	3	0.46	0.46	0.40	0.42	0.26
Ivory	17	69	14	14	77	9	100	0.33	6+	3	0.33	0.35	0.34	0.35	0.20
Ivy	11	33	56	0	12	88	100	0.68	6+	3	0.53	0.53	0.44	0.46	0.25
Jade	10	45	45	1	31	68	100	0.57	6	3	0.46	0.47	0.40	0.42	0.22
Kiwi	14	45	41	6	38	56	100	0.57	6	3	0.47	0.47	0.41	0.42	0.24
Lily	12	56	32	3	52	45	100	0.46	6+	3	0.40	0.41	0.38	0.39	0.20
Luna	18	57	25	11	49	40	99	0.45	6+	3	0.40	0.41	0.37	0.38	0.24
Misty Blue	13	56	31	3	45	52	100	0.46	6	3	0.40	0.41	0.38	0.39	0.21
Navy	10	31	59	0	5	95	100	0.70	6+	3	0.54	0.54	0.45	0.47	0.25
Ochre	15	59	26	5	65	30	100	0.43	6+	3	0.39	0.40	0.37	0.38	0.22
Pacific	14	43	43	1	17	82	100	0.58	6	3	0.48	0.48	0.41	0.43	0.25
Papaya	18	62	20	14	62	24	100	0.40	6+	3	0.37	0.39	0.36	0.37	0.23
Paradise Pink	16	45	39	3	17	80	100	0.57	6	3	0.47	0.47	0.40	0.42	0.26
Pomegranate	14	40	46	1	13	86	100	0.61	6	3	0.50	0.50	0.42	0.40	0.26
Purple	13	44	43	0	13	87	100	0.57	5+	3	0.47	0.47	0.41	0.43	0.24
Raven	11	32	57	0	6	94	100	0.69	6+	3	0.54	0.53	0.44	0.47	0.26
Ruby	12	43	44	1	15	84	100	0.58	3	3	0.48	0.48	0.41	0.43	0.24
Sapphire	7	33	60	0	8	92	100	0.68	6	3	0.53	0.53	0.44	0.46	0.22
Scuba	13	44	43	2	13	85	100	0.57	5+	3	0.47	0.47	0.41	0.43	0.24
Shadow	10	44	46	0	25	75	100	0.57	6	3	0.47	0.47	0.41	0.43	0.22
Sky	12	59	29	2	47	51	100	0.43	6	3	0.38	0.40	0.37	0.38	0.19
Spring Green	12	61	27	7	65	28	100	0.41	6+	3	0.37	0.39	0.36	0.37	0.19
Sunset	17	49	34	6	29	65	100	0.53	6+	3	0.45	0.45	0.40	0.41	0.25
Taupe	15	54	31	5	45	50	100	0.48	6	3	0.42	0.43	0.38	0.40	0.22
Topaz	10	37	53	0	15	85	100	0.64	5	3	0.51	0.51	0.43	0.45	0.24
Willow	17	53	30	10	48	42	100	0.49	6+	3	0.43	0.43	0.39	0.40	0.24

GTOT: The amount of heat transmitted through the combination of glass and solar shading.

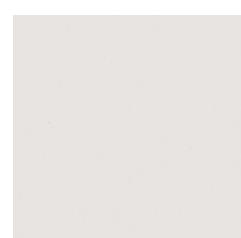
DG: Double Glazed
TG: Triple Glazed
DG LE: Double Glazed Low Emissivity.

G Value: amount of heat transmitted through the glazing
SG: Single Glazed

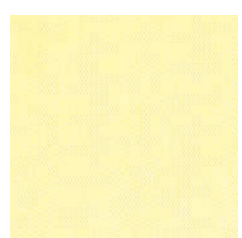
Dim out:
1 = High light penetration
4 = Low light penetration
5 = Blackout

UV Block: the % of UV light blocked by the fabric
SC: Shading Co-efficient
CF: Colour Fastness

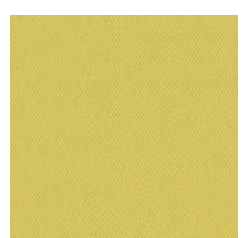
T: % Transmittance
R: % Reflectance
A: % Absorption



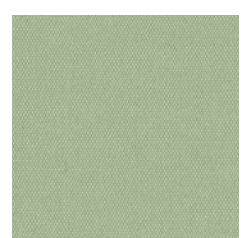
China White



Cream



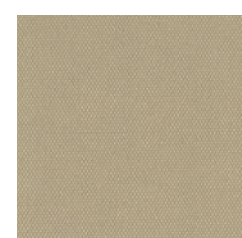
Spring Green



Lily



Misty Blue



Papaya



Ecru



Taupe



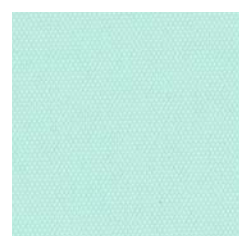
Birch



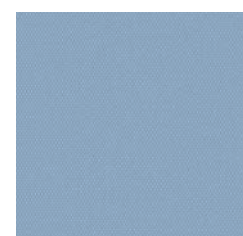
Buttercup



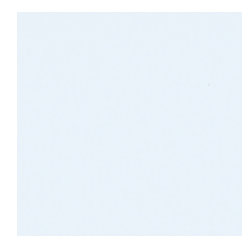
Garden Green



Aqua



Sky



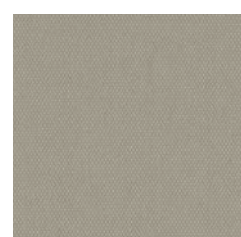
Cloud



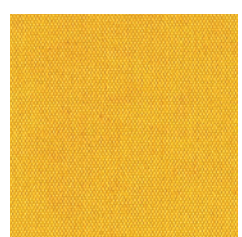
Ivory



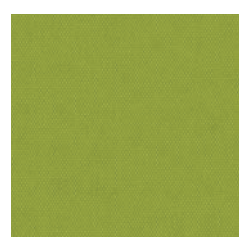
Caramel



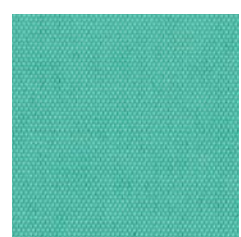
Luna



Ochre



Kiwi



Jade



Pacific



Cornflower



Blush



Cantaloupe



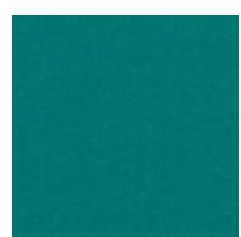
Clay



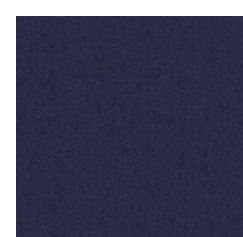
Amber



Ivy



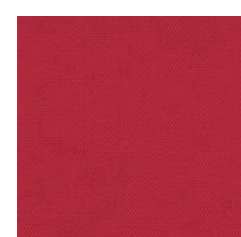
Emerald



Sapphire



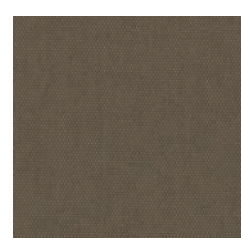
Chambray



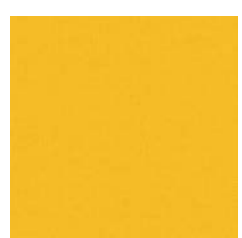
Paradise Pink



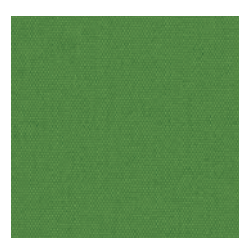
Sunset



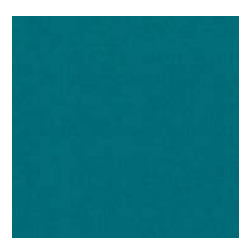
Shadow



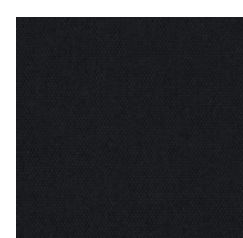
Acacia



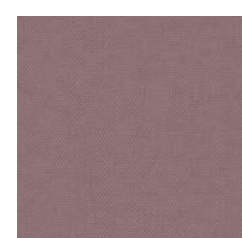
Chive



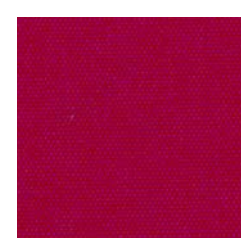
Topaz



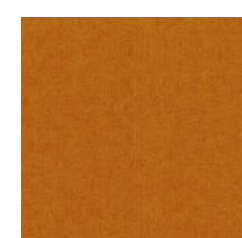
Navy



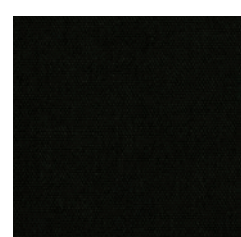
Iris



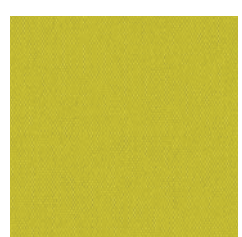
Ruby



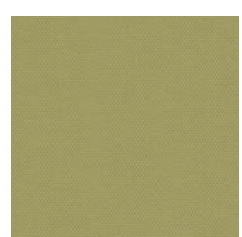
Garnet



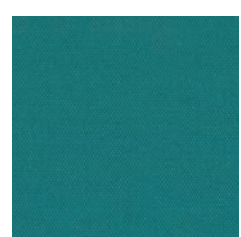
Raven



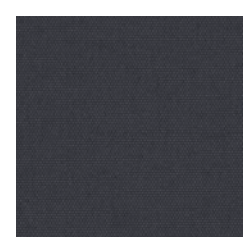
Chartreuse



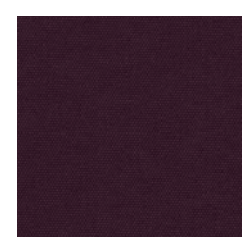
Willow



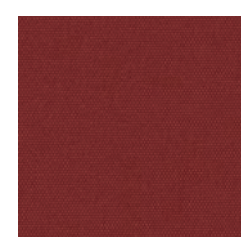
Scuba



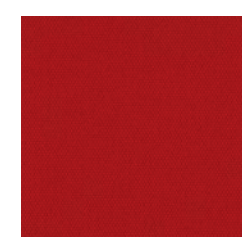
Breton Blue



Purple



Pomegranate



Chelsea Red



CARNIVAL

Fabric Composition

100% polyester

Fabric Width

2.05m (80")

Vertical Louvre Width

89mm (3½") or 127mm (5")
Other widths available on request

Fabric Weight

255g/m² (7.5oz/yd²)

Flammability Standards

Carnival meets FR standard BS 5867 Part 2 Type B.
Further information is available on request.

Colour Fastness

Tested in accordance with BS EN ISO 105-B01:1999

Cleaning

Carnival vertical fabrics are machine washable, other Carnival fabrics can be wiped clean. See manufacturers instructions. Tested in accordance with BS EN 26330:1994 method 7a.

Pollergen™

Fabrics treated with Pollergen™ help relieve hayfever symptoms. On contact, Pollergen™ treated blinds denature up to 50% of grass pollen entering a room. A deployed blind is the most effective.

Ultra-Fresh™*

A fabric treated with Ultra-Fresh* protects against the growth of odour causing bacteria and fungi, preserving fabric freshness.

*Ultra-fresh is a registered trademark of Thomson Research Associates, Canada.

Greenshield

Fabrics featuring Greenshield have been tested to confirm no harmful VOC's or hazardous substances will be released into the environment in quantities that are recognised as potentially dangerous to occupants of dwellings or buildings.

CCT®

Cold Coat Technology® is a specialised coating formula applied to the reverse of the fabric that increases solar reflectance and lowers radiated heat. Especially effective in darker coloured fabrics.

Properties

