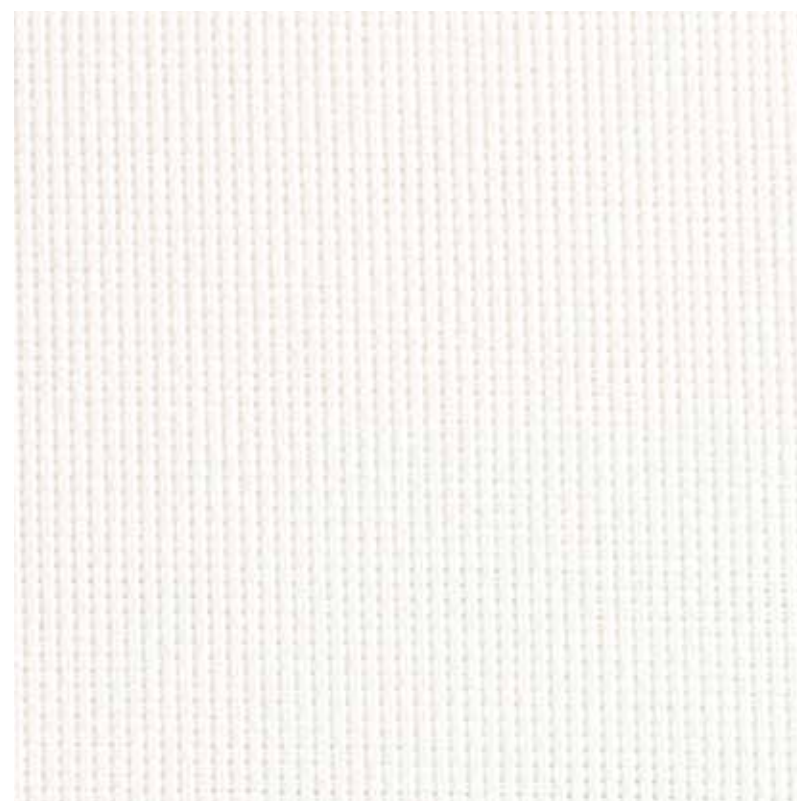


# Roe fabric

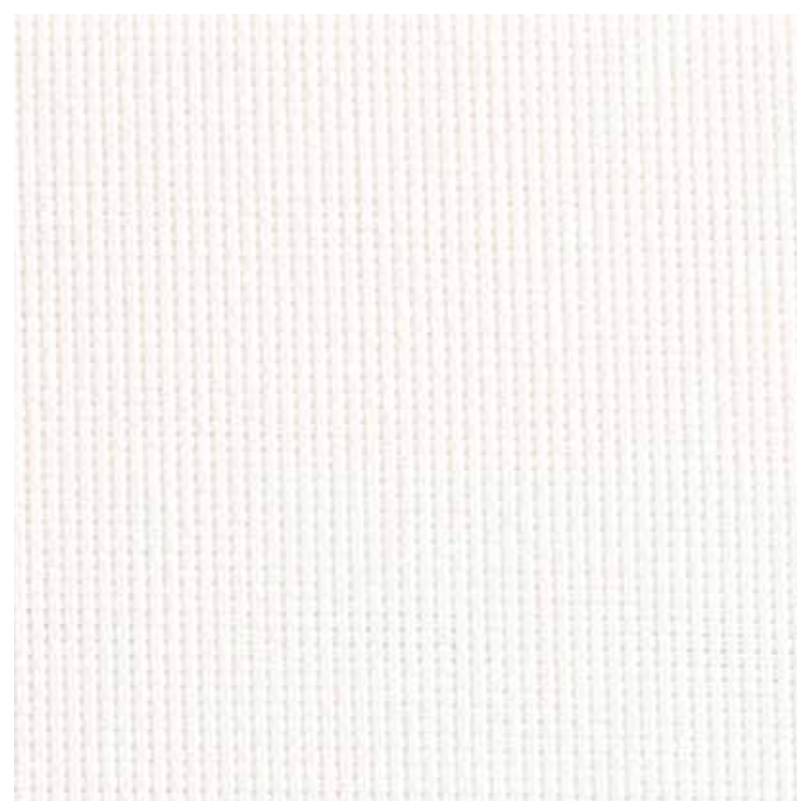
Roe fabric is a uniquely stylish and popular fabric that offers diverse performance characteristics. Whilst reducing solar glare, the comfort of natural light is still maintained. With seven colours along with one of the most advanced production procedures, the flame retardant fabric is designed with commercial, education and healthcare environments in mind. Roe fabric comes in a choice of 2 screening capabilities, only allowing 1% or 3% of light through. In this selector, the top fabric samples of each colour allow 1% of the light through, and the bottom samples allows 3% of the light through – hold it up to the light to test!

- Fabric Composition:** 70% PVC, 30% Polyester
- Fabric Range:** 7
- Louvre Widths:** 127mm (5")  
89mm (3.5")
- Louvre Roll Length:** 30m
- Roller Fabric Width:** 1830mm (72")  
2500mm (98.4")  
3000mm (183")
- Roller Fabric Length:** 30m
- Fabric Thickness:** 1%: 0.68mm  
3%: 0.58mm
- Fabric Weight:** 1%: 480gsm  
3%: 460gsm
- Fire Retardancy:** Conforms to BS5867, Part 2: Type B 2008
- IMO Certified:** IMO 2010 FTP CODE ANNEX 1 PART 7
- Shading:** High Performance Screen. Suitable for computer environments
- Moisture Resistance:** Suitable for moist conditions
- Care Instructions:** Wipe clean
- Mesh/in:** 48 x 48
- Colour Fastness:** 4.5

White 1%



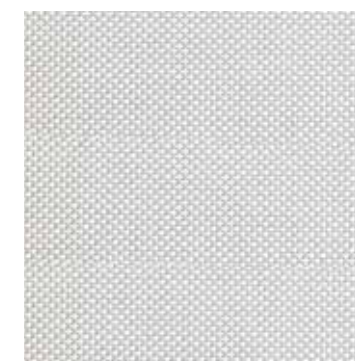
White 3%



Beige 1%



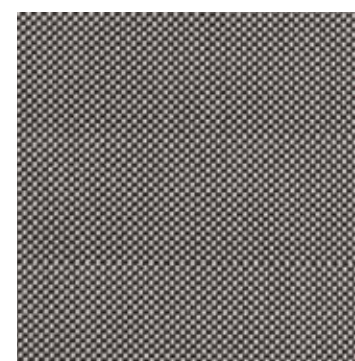
Light Grey 1%



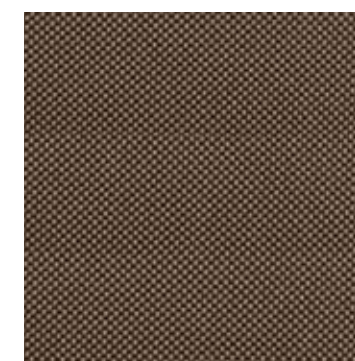
Mid Grey 1%



Dark Grey 1%



Bronze 1%



Charcoal 1%



Beige 3%



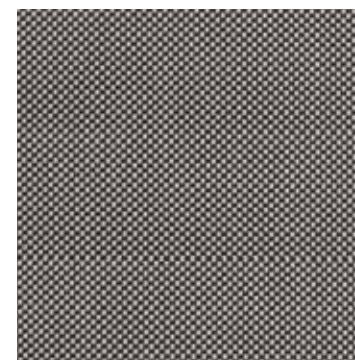
Light Grey 3%



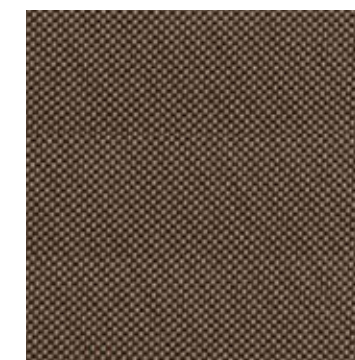
Mid Grey 3%



Dark Grey 3%



Bronze 3%



Charcoal 3%



this fabric range comes with a full **LIFETIME Warranty** as standard.

CI/SFB 1976 reference by SFB Agency		
(76.7)	X	

# Roe

## Screen fabric



Roller and louvre screen fabric collection for public and corporate use.

- Anti-glare
- Excellent solar reflectance
- 1% or 3% natural light control
- Fire retardant

# Roe fabric

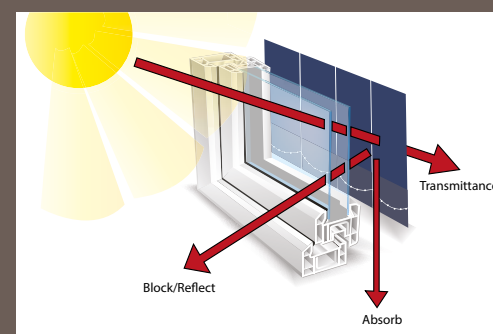
## shading efficiency

**Transmittance** is the amount of light and heat transmitted beyond the fabric. The lower the amount, the greater the efficiency.

**Block/reflect** is the amount of heat and light that is blocked or reflected. The higher the amount, the greater the efficiency.

**Absorption** is the amount of heat and light absorbed in the fabric. The higher the amount, the lower the efficiency.

**Ultraviolet** protection illustrates how protective the fabric is against ultraviolet rays. The higher the amount, the greater the effectiveness.



this fabric is **GREENGUARD** certified as a low emissions product suitable for indoor use.

	3000 mm	2500 mm	1830 mm	89 / 127 mm	Openness %	Heat Transmittance %	Heat Reflectance %	Heat Absorption %	Light Transmittance %	Light Absorption %	Ultraviolet Protection %	Shading Co-efficiency	GTOT
White					1	19	67	13	17	5	95	0.39	0.34
White					3	22	66	12	20	5	96	0.40	0.35
Beige					1	17	60	24	13	20	96	0.43	0.37
Beige					3	20	56	24	16	20	96	0.45	0.39
Light Grey					1	11	49	39	8	36	95	0.47	0.41
Light Grey					3	15	51	34	11	33	96	0.47	0.41
Mid Grey					1	7	36	57	3	59	94	0.54	0.47
Mid Grey					3	10	37	53	6	56	97	0.55	0.47
Dark Grey					1	0	12	88	0	87	99	0.67	0.59
Dark Grey					3	4	13	83	4	82	97	0.67	0.58
Bronze					1	0	7	93	0	93	99	0.70	0.61
Bronze					3	4	8	88	4	89	96	0.71	0.62
Charcoal					1	0	4	96	0	96	99	0.72	0.63
Charcoal					3	4	3	93	4	93	96	0.73	0.64