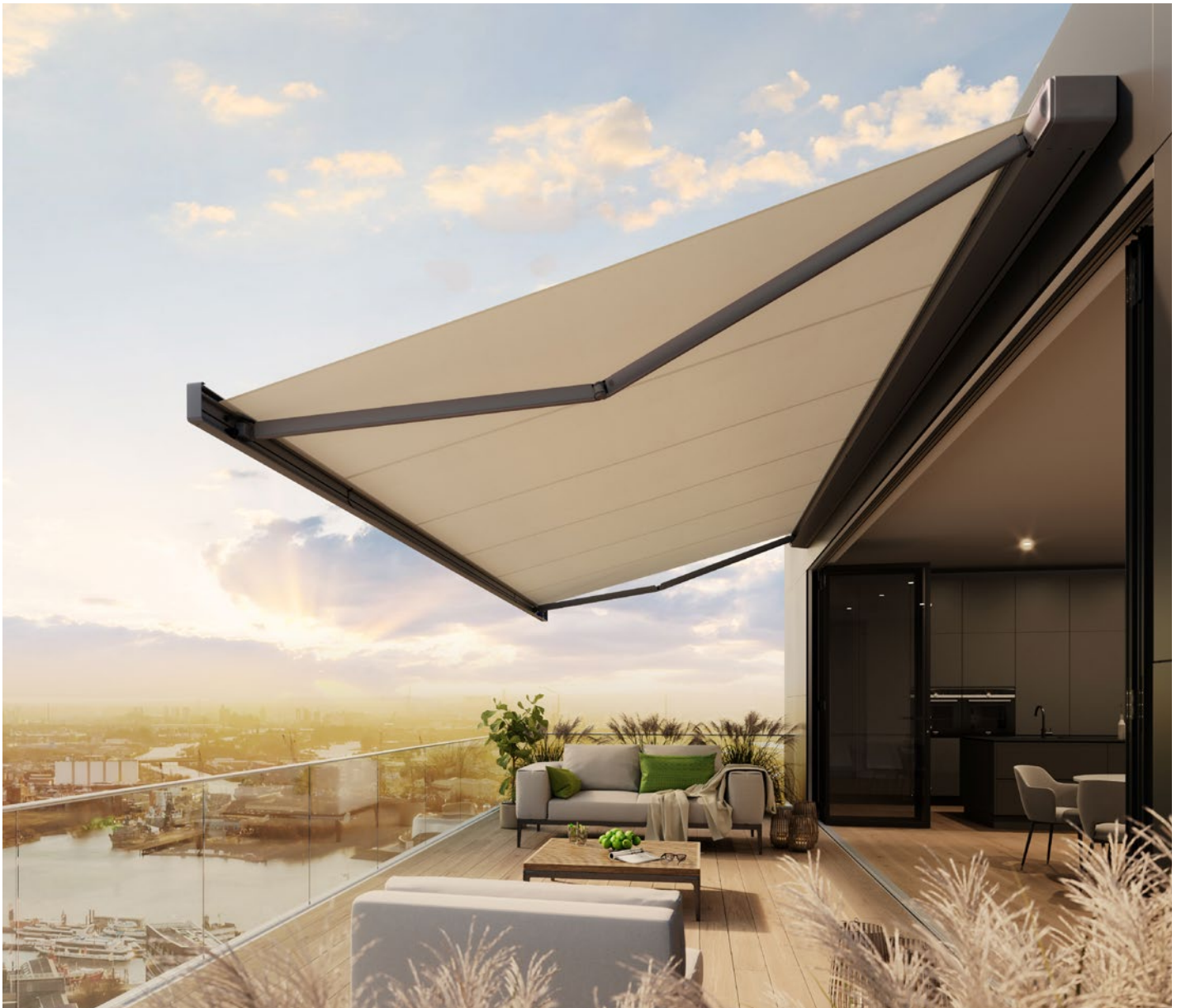


MX_970



For everyone
who loves all-round beauty.



markilux
The best under the sun



Cassette awning

maximum 600 × 300 cm
maximum 500 × 350 cm

Arm technology

bionic tendon

Options

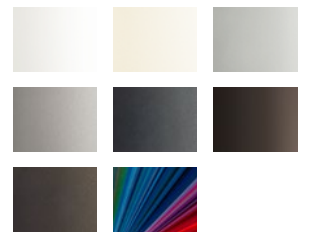
LED Line in the cassette,
colour combinations,
shadeplus

markilux shadeplus

For more protection from prying eyes and the glare of the sun, the optional vertical blind in the front profile is bound to impress.



Awning colours

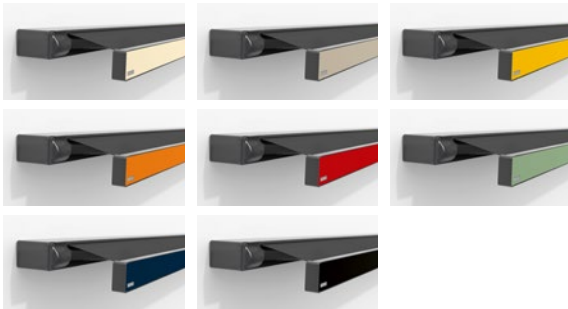


Awning cover fabrics



In the evening. In the best possible light.

The dimmable LED Line in the cassette makes for a stylish ambience during the course of the evening.



markilux front panel colours

The colour combination of a designer awning – consisting of frame colour, awning cover and front panel colour – has a major influence on the visual appearance and impact of the selected awnings. This trio of colours is in harmony with the clean lines and functional design of these designer awnings. From classically chic to fashionably elegant, there are many ways you can customise the awning of your dreams.

markilux designer awnings. Made in Germany.

Create the most alluring shade in the world.