

Thames fabric

Thames fabric is designed for areas where privacy is needed as well as sufficient light shading. The weaving process of this flame retardant composition ensures the fabric has a distinguished and stylish look suitable for most applications. With a strong choice of 22 colours, and a convenient range of fabric widths available, the potential applications for Thames fabric stretches the imagination. Thanks to the 2000mm or 3000mm widths, fabric joins are kept to a minimum to assist in wastage, design and fabrication. This fabric incorporates Biosafe which is the international accreditation standard of our proven antimicrobial formula that has been tested under the most stringent measures to ensure effective inhibiting of infection.

- Fabric Composition:** 100% Polyester
- Fabric Range:** 22
- Louvre Widths:** 127mm
89mm
- Vertical Roll Length:** 100m
- Roller Fabric Width:** 2000mm / 3000mm
- Roller Fabric Length:** 30m
- Fabric Thickness:** 0.30mm
- Fabric Weight:** 220 g/m²
- Fire Retardancy:** Conforms to BS5867, Part 2: Type B 2008
- IMO Certified:** IMO 2010 FTP CODE ANNEX 1 PART 7
- Shading:** Dimout. Suitable for computer environments
- Moisture Resistance:** Suitable for moist conditions
- Anti-Bacterial:** Biosafe Accreditation
- Care Instructions:** Wipe with damp sponge. Do not tumble dry; Do not dry clean; Do not iron
- Options:** Available in Eden Blackout fabric

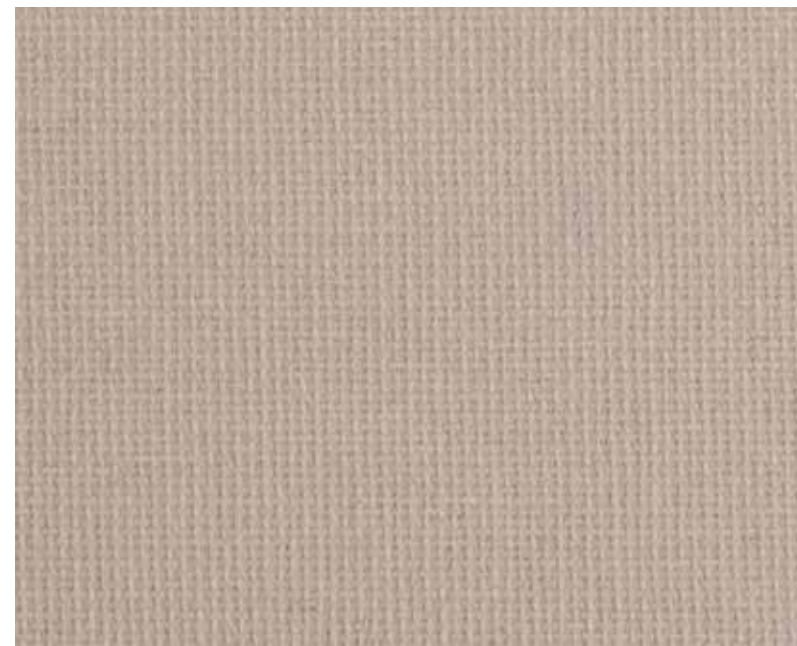


this fabric range comes with a full **LIFETIME Warranty** as standard.

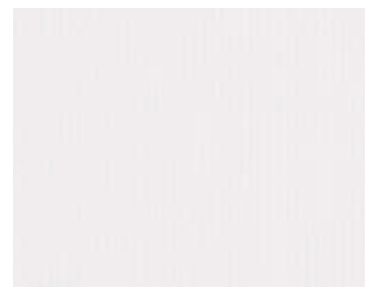
this fabric range comes with a full **BIOSAFE Accreditation** as standard.

CI/SFB 1976 reference by SFB Agency		
(76.7)	X	

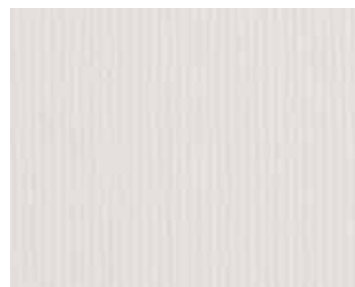
Tan



Frost



Sesame



Vanilla



Warm Almond



Sandstone



Linen



Cherry



Heather



Surf



Marine



Cobalt



Dark Azure



Lawn



Apple



Mustard



Mist



Stone Grey



Fossil Grey



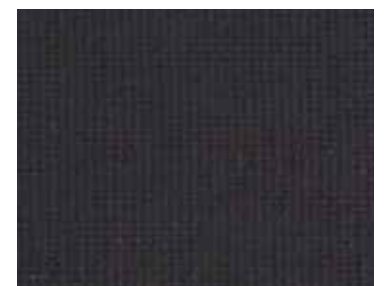
Graphite



Steel



Coal



Thames

Dimout fabric



Roller and louvre dimout fabric collection for public and corporate use.

- 22 colours
- Biosafe anti-bacterial
- Wipe clean
- Fire retardant



Thames fabric

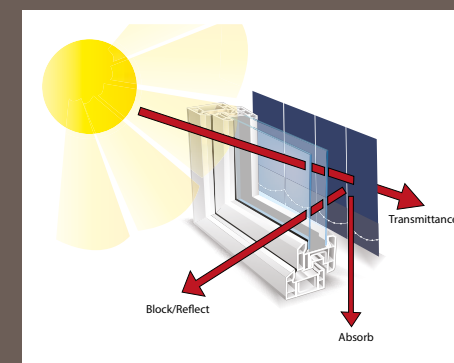
shading efficiency

Transmittance is the amount of light and heat transmitted beyond the fabric. The lower the amount, the greater the efficiency.

Block/reflect is the amount of heat and light that is blocked or reflected. The higher the amount, the greater the efficiency.

Absorption is the amount of heat and light absorbed in the fabric. The higher the amount, the lower the efficiency.

Ultraviolet protection illustrates how protective the fabric is against ultraviolet rays. The higher the amount, the greater the effectiveness.



OEKO-TEX®
CONFIDENCE IN TEXTILES
STANDARD 100
A10-0296

	2500 / 3000 mm	2000 mm	127 mm	89 mm	Heat Transmittance %	Light Transmittance %	Ultraviolet Protection %	Light Absorption %	Heat Reflectance %	Light Reflectance %	Shading Co-efficiency	G10T
Tan					9	1	100	34	56	42	0.44	0.37
Frost					14	12	100	9	78	84	0.32	0.27
Sesame					13	12	100	10	77	82	0.32	0.28
Vanilla					13	10	90	13	73	77	0.35	0.29
W. Almond					12	8	90	16	71	73	0.35	0.30
Sandstone					13	9	100	16	71	74	0.36	0.30
Linen					12	7	100	18	70	71	0.36	0.30
Cherry					4	<1	100	62	34	16	0.56	0.47
Heather					9	1	100	31	60	43	0.41	0.35
Surf					11	4	100	26	63	55	0.40	0.34
Marine					1	<1	100	70	28	19	0.59	0.50
Colbalt					6	0	100	59	35	10	0.56	0.47
D. Azure					0	0	100	89	11	7	0.69	0.59
Lawn					<1	<1	100	80	20	19	0.64	0.54
Apple					4	1	100	54	42	42	0.52	0.44
Mustard					11	11	100	23	66	66	0.54	0.39
Mist					5	3	100	41	54	56	0.44	0.38
Stone					2	1	100	56	41	42	0.51	0.44
Fossil					<1	10	100	23	27	28	0.71	0.61
Graphite					<1	0	100	82	18	19	0.65	0.55
Steel					0	0	100	89	11	12	0.69	0.59
Coal					0	0	100	94	6	6	0.72	0.61