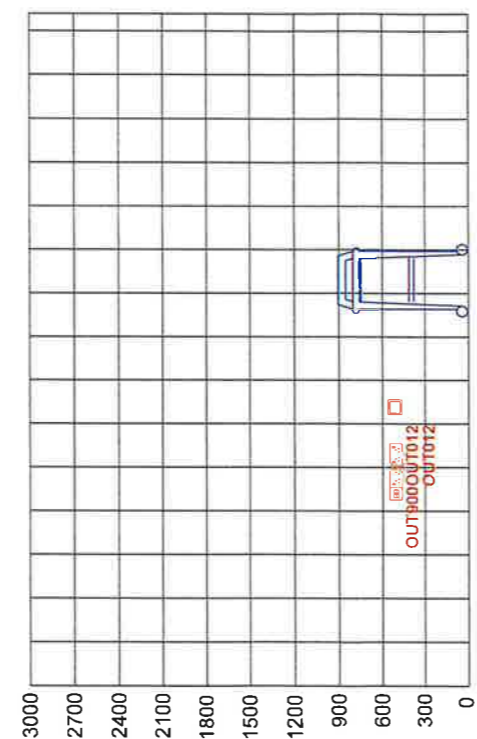
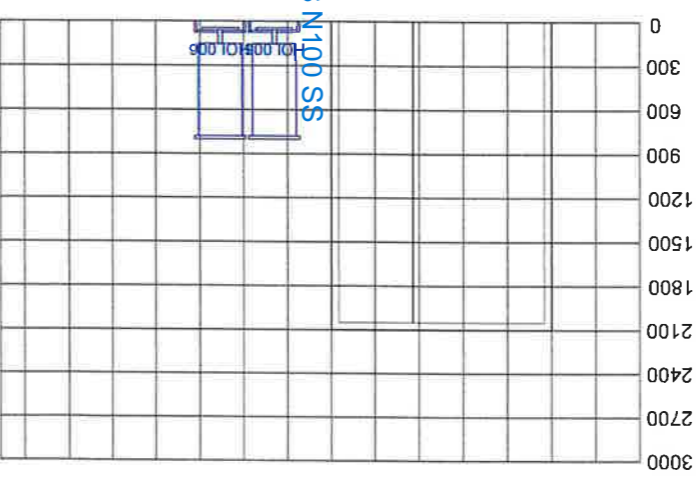
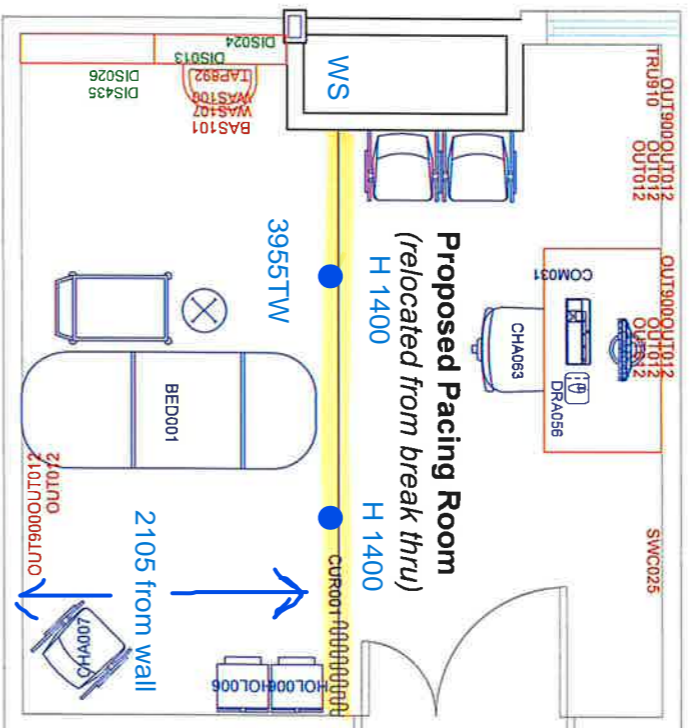
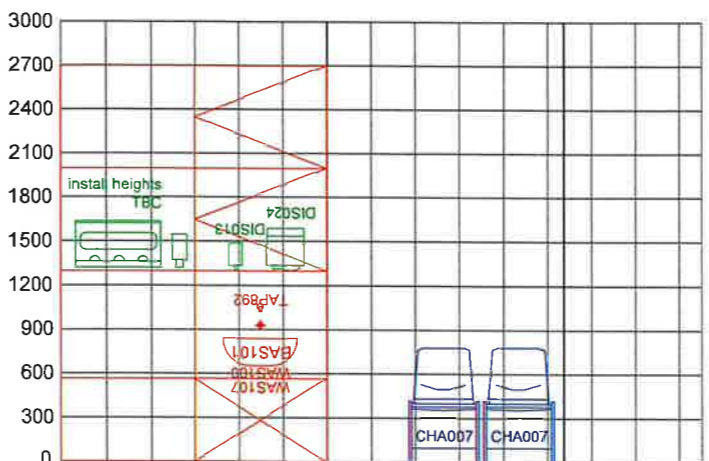


Plan B



- SG6100 White + SG6650
- Floor to underside of profile 2100mm
- Floor to steel beams 3435mm
- Floor to false ceiling ?

CODE	DESCRIPTION	GROUP	QTY
OUT900	SOCKET, outlet data double, for computer/telephone, trunking mounted	1	1
OUT012	SOCKET, outlet switched double, 13amp, trunking mounted	1	3
SWC025	SWITCH, light, wall mounted	1	1
TRU910	TRUNKING, electrical power and data points, to suit length of worktop/desktop	1	2
CI.O003	CLOCK, synchronous with second sweep hand, wall mounted	1	1
BAS100	BASIN, medium, 500W 400D, vitreous china, no tap holes, no overflow, integral back outlet	1	1
WAS100	WASTE, flush, grated, metal, 32mm, no plug	1	1
WAS107	TRAP, bottle, 32mm, concealed, HTM 64	1	1
TAP992	TAP, bib, 2x8 mm panel mounted, thermostatic basin mixer with sensor operator	1	1
BOA001	White Board, 1200x900mm, wall mounted	1	1
DIS013	DISPENSER, paper towel, wall mounted	2	1
DIS024	DISPENSER, soap, wall mounted	2	1
DIS435	DISPENSER, disposable gloves set of 3, wall mounted	2	1
DIS026	DISPENSER, disinfectant solution Med. Alcohol Gel, lever action, wall mounted	2	1
DRA056	DRAWER UNIT, 3 drawer, lockable, on castors, 740H 400W 800D	3	1
CUR9001	CURTAIN RAIL, curtain	3	1
HOL006	HOLDER, sack, with lift foot operated, freestanding, metal, 70l capacity	3	2
COM049	COMPUTER, monitor, desktop	3	1
COM033	COMPUTER, keyboard	3	1
COM031	COMPUTER, CPU	3	1
CHA053	CHAIR, height adjustable, high back, swivel, 5 star base, on glides, washable	3	1
CHA007	CHAIR, upright, upholstered, stacking	3	1
BED001	BED, patient hospital bed, adjustable	3	1
IP.S.	Fornica faced (Mouse Grey), 12mm solid grade laminate, 18mm MR ply base for vinyl		
WALL.S.	Dulux Trade Diamond Matt, prepared to receive paint, 1no base coat, 3no top coats,		
WALL.O.	Whitaker Altro wall protection, colour TBC		

- █ **GROUP 1 -**  
Supplied & Fixed By Contractor
- █ **GROUP 2 -**  
Supplied by the Health & Social Services Trust/Board & Fixed by Contractor
- █ **GROUP 3 -**  
Supplied & Put in Position by the Health & Social Services Trust/Board - Outside General Contract

REVISIONS	XX	XXXX
X	xx.xx.xx	xx xxxx

**Whittaker & Watt**  
379 Anttrim Road, Newtownabbey, Co. Antrim, BT36 5EB  
www.whittakerandwatt.com / Tel - 028 9084 1029

Project: **ALTERATION+REFURBISHMENT LEVEL01 NEWCARDIACINVESTIGATIONUNIT MWB-CCCLSTERHOSPITAL**  
Client: **SEHSCT**

Dwg Name:	Issue:	Format:
ROOM-SHEET-PACING-ROOM-1	TENDER	A3
Date: 22.07.24	Drawn: CC	Checked: JB
Dwg No: 2177151-UHD-WW-ZZ-ZZ-DR-A	Scale: 1:50	800-004-F08