

NOTE: Existing 4 zone induction ranges are located in this kitchen rather than in Training Kitchen 2 as they are heavier duty and more suitable for canteen use

2no. C31 ovens removed and replaced by C43 chargrill and C44 600mm brattpan

C36a pot rack added

AV screen type 2 (305) added

C25 moved to countertop

C1a worktop description changed from corian to stainless steel finish

C45 display fridge added

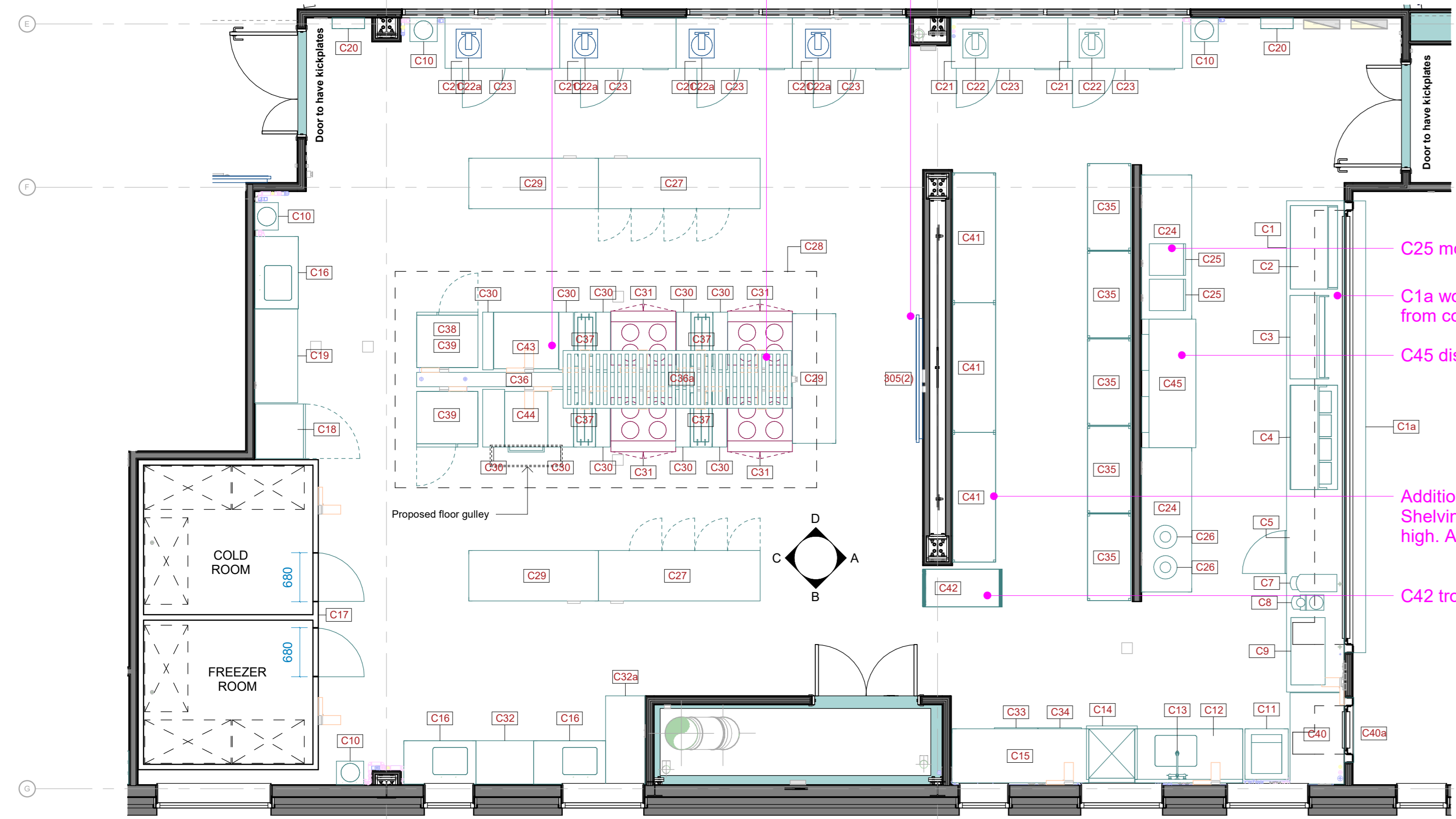
Additional shelving C41 added. Shelving adjusted to be 1600mm high. Adjustable note added

C42 trolley added

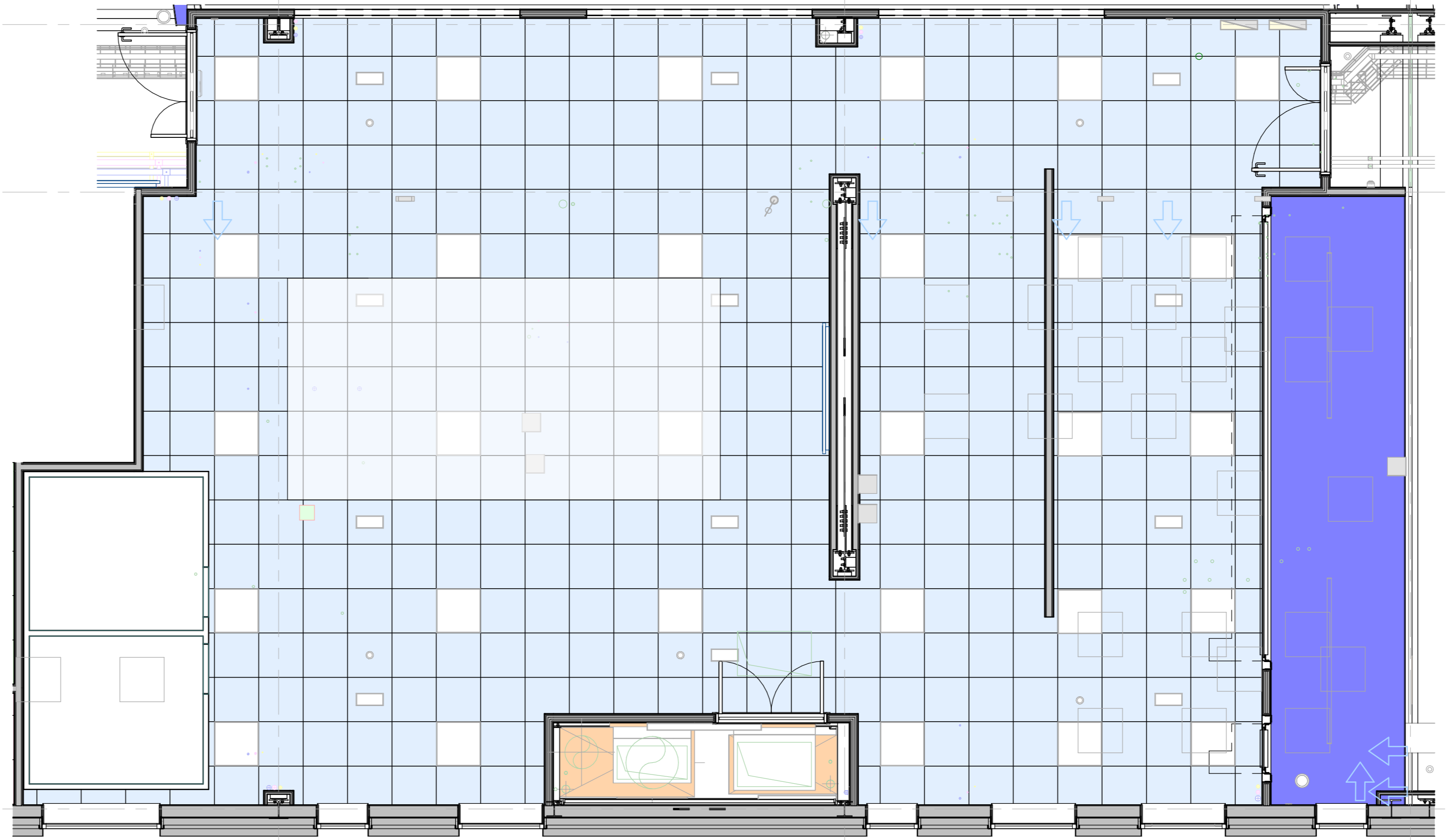
L1-013 Finishes Schedule											
Number	Room: ICT	Room Number	Name	Area	Room: Occupancy	Finish - Ceilings	Finish - Walls	Finish - Floors	Finish - Skirting	Finish - Blinds & Curtains	Room: Finish - Comments
L1-013	F003	Training Kitchen 2		162 m ²	15	Suspended Ceiling Tile - Hygienic	Hygienic Wall Paneling	Non-Slip Vinyl / Cove		Fly Screens	

KEY - Contract Supplier Installer

- CAT 1 - Client Supplied and Fitted
- CAT 2 - Client Supplied - Contractor Fitted
- CAT 3 - Existing Reused - Client Supplied - Contractor Fitted
- CAT 4 - Contractor Supplied - Contractor Fitted

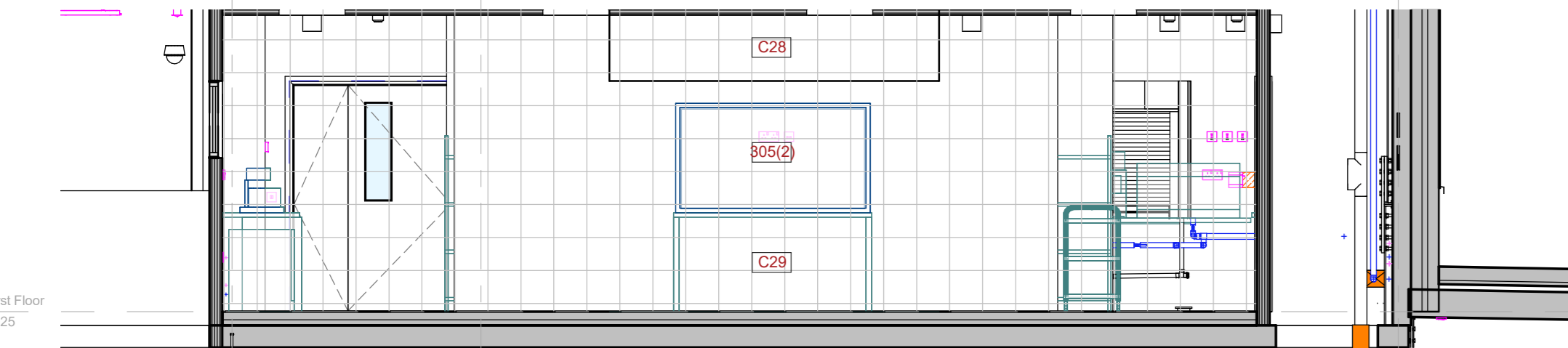


L1-013_Plan
1:50

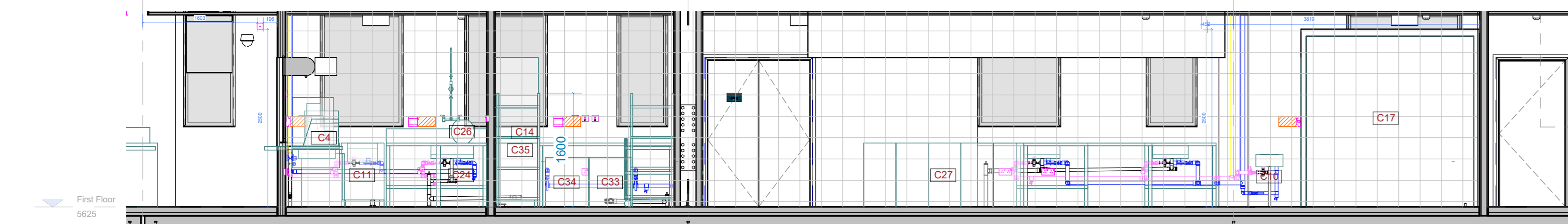


L1-013_RCP
1:50

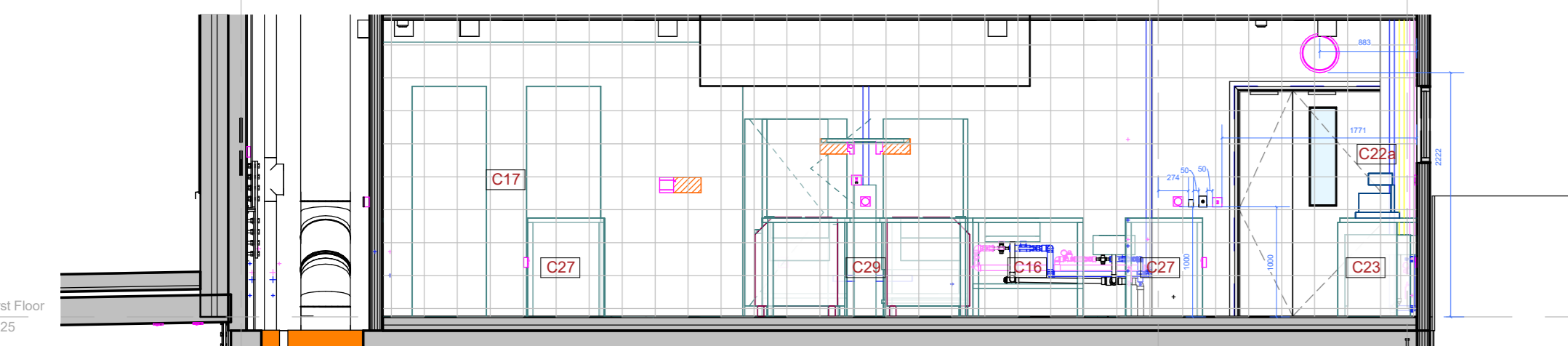
L1-013 Equipment Schedule				
Stephens Catering Code	Comments	CAT No.	Count	
305(2)	AV type 2	CAT 1	1	
C1	SCE stainless steel topped counter c/w out-outs for items C2, C3 & C4 & void for item C5	CAT 4	1	
C1a	SCE s/s capping piece / trayslide c/w chamfer corners	CAT 4	1	
C2	Moffat D3RDSDL drop-in multi-tier display unit	CAT 4	1	
C3	Moffat D3RWDSL drop-in del display unit	CAT 4	1	
C4	Moffat D4BMSL 4 well drop-in bain marie unit	CAT 4	1	
C5	Blizzard UCR140 undercounter fridge	CAT 4	1	
C7	Marco T20 water boiler	CAT 4	1	
C8	Carimali C64 grinder c/w knock out drawer	CAT 4	1	
C9	Carimali Pratica 2 group coffee machine	CAT 4	1	
C10	Mechline WS4 wash hand basins	CAT 4	4	
C11	IMC F79/703 WasteStation	CAT 4	1	
C12	SCE s/s 'driles' dishwash tabling c/w inset bowl	CAT 4	1	
C13	Aqualip AJPR30 pre-rinse spray unit	CAT 4	1	
C14	Hobart Econmax H604W-12B pass through dishwasher	CAT 4	1	
C15	SCE s/s 'cleans' dishwash tabling c/w void for C33/C34	CAT 4	1	
C16	SCE s/s single bowl sink units	CAT 4	3	
C17	Foster dual compartment coldroom/freezer room c/w remote refrigeration	CAT 4	1	
C18	Foster EP12-35 blast chiller	CAT 4	1	
C19	SCE s/s wall bench	CAT 4	1	
C20	Fly Killers	CAT 4	2	
C21	Blizzard UCR140 undercounter fridge	CAT 4	6	
C22	Chefquip SP-500 5 litre mixer	CAT 4	2	
C22a	Existing KitchenAid 5 litre mixers	CAT 1	4	
C23	SCE s/s wall benches c/w void for items C21 & bank of 4 drawers	CAT 4	6	
C24	SCE s/s centre benches	CAT 4	2	
C25	Lincat CIBO/S high speed oven	CAT 4	2	
C26	Dualit Soup Kettles	CAT 4	2	
C27	Inomax PKN999HC 4 door refrigerated counter	CAT 4	2	
C28	SCE s/s Island Extract & Supply Air Outboard Style Canopy c/w extract plenum, insulated condensing plenum, deflector grille, baffle filters, recessed lights, full perimeter grease channels & grease collection boxes. Manufactured in compliance with HVCA DW172, certified & accredited to B0HS P161 & P162	CAT 4	1	
C29	SCE s/s centre benches	CAT 4	3	
C30	SCE s/s wall bench	CAT 4	10	
C31	Existing Falcon E3914i 4 zone induction ranges	CAT 2	4	
C32	SCE s/s wall bench	CAT 4	1	
C32a	SCE s/s wall bench	CAT 4	1	
C33	Domestic washing machine	CAT 4	1	
C34	Domestic tumble dryer	CAT 4	1	
C35	EAS 4 tier adjustable shelving units	CAT 4	5	
C36	SCE s/s service spine	CAT 4	1	
C36a	SCE s/s pot rack	CAT 4	1	
C37	Lincat J9 freestanding electric fryers	CAT 4	4	
C38	Falcon S4E8/11 10 grid electric combination ovens	CAT 4	2	
C39	SCE s/s stands for items C38	CAT 4	2	
C40	SCE s/s dumps bench	CAT 4	1	
C40a	SCE s/s capping piece	CAT 4	1	
C41	EAS 4 tier adjustable shelving units	CAT 4	3	
C42	SCE s/s 3 tier general purpose trolley	CAT 4	1	
C43	Falcon E3925 electric chargrill c/w fixed stand	CAT 4	1	
C44	Falcon E2964 electric bratt pan	CAT 4	1	
C45	Moffat MLSA chilled merchandiser c/w lockable shutter	CAT 4	1	



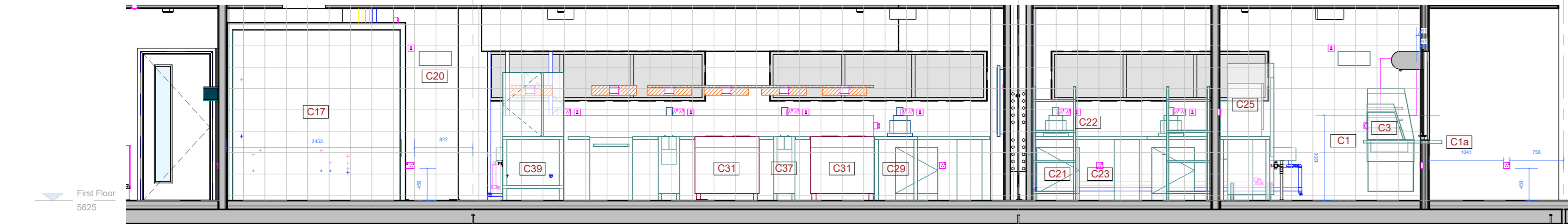
L1-013_Elevation A
1:50



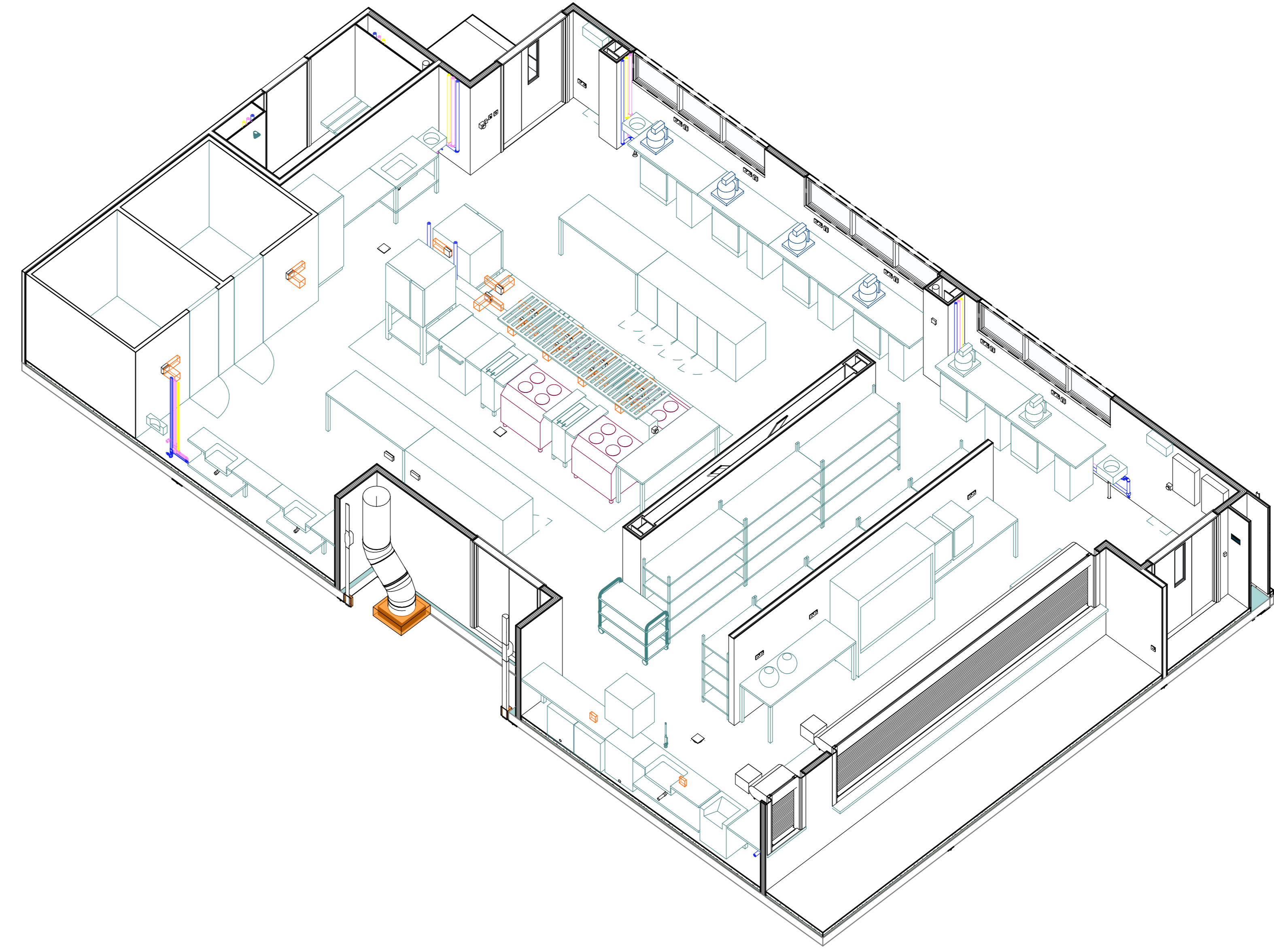
L1-013_Elevation B
1:50



L1-013_Elevation C
1:50



L1-013_Elevation D
1:50



L1-013 3D View

NOTE: Existing 4 zone induction ranges are located in this kitchen rather than in Training Kitchen 2 as they are heavier duty and more suitable for canteen use

This document has been prepared in accordance with the scope of the agreement and is for the use of the client only. It is the client's responsibility to ensure that the information is used for the purposes for which it was prepared and is not used for any other purpose. The client acknowledges that the client is responsible for the accuracy of the information provided. Only written directions shall be valid.

Copyright: Isherwood & Ellis Architects ©
 0204 9524 4111 Fax: 0204 9524 4112 All rights reserved. No part of this document may be reproduced, stored in a retrieval system, or transmitted in any form or by any means, electronic, mechanical, photocopying, recording, or by any information storage and retrieval system, without the prior written permission of the copyright owner. All rights reserved.

Designed with reference to the survey, information and reports herein.

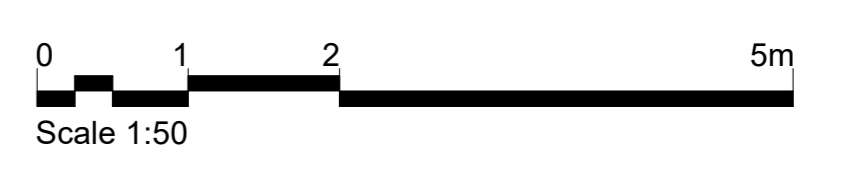
DRAFT

Rev	Description	Rev	CHK'd	Date
01	Issue for tender			
02	Issue for tender			
03	Issue for tender			
04	Issue for tender			
05	Issue for tender			
06	Issue for tender			
07	Issue for tender			
08	Issue for tender			
09	Issue for tender			
10	Issue for tender			
11	Issue for tender			
12	Issue for tender			
13	Issue for tender			
14	Issue for tender			
15	Issue for tender			
16	Issue for tender			
17	Issue for tender			
18	Issue for tender			
19	Issue for tender			
20	Issue for tender			
21	Issue for tender			
22	Issue for tender			
23	Issue for tender			
24	Issue for tender			
25	Issue for tender			
26	Issue for tender			
27	Issue for tender			
28	Issue for tender			
29	Issue for tender			
30	Issue for tender			
31	Issue for tender			
32	Issue for tender			
33	Issue for tender			
34	Issue for tender			
35	Issue for tender			
36	Issue for tender			
37	Issue for tender			
38	Issue for tender			
39	Issue for tender			
40	Issue for tender			
41	Issue for tender			
42	Issue for tender			
43	Issue for tender			
44	Issue for tender			
45	Issue for tender			
46	Issue for tender			
47	Issue for tender			
48	Issue for tender			
49	Issue for tender			
50	Issue for tender			

Isherwood & Ellis
ARCHITECTS

Tel: +44(0)20 9066 3301 Fax: +44(0)20 9070 1111
 Project:
 Northern Regional College,
 Ballymena
 Drawing:
 L1-013 - Training Kitchen 2

Project No:
 22 1080
 Drawing No:
 BAL-IEA-ZZ-01-RD-A-9113 P06
 Revision:
 S3



Created: 08/05/22 Checked: 08/05/22
 Date: 08/17/22 Scale: A3 As indicated
 www.isherwoodellis.com