

**44 Salisbury Terrace, Aberdeen**

---

**From** Gregor Young <gregoryoung494@btinternet.com>  
**Date** Thu 2026-04-02 13:15  
**To** Sales <sales@aberdeen-blinds.co.uk>

Hello,

I had some blinds fitted by yourselves a few months ago but I've just noticed a manufacturing defect with one of the sets of blinds in my living room bay window.

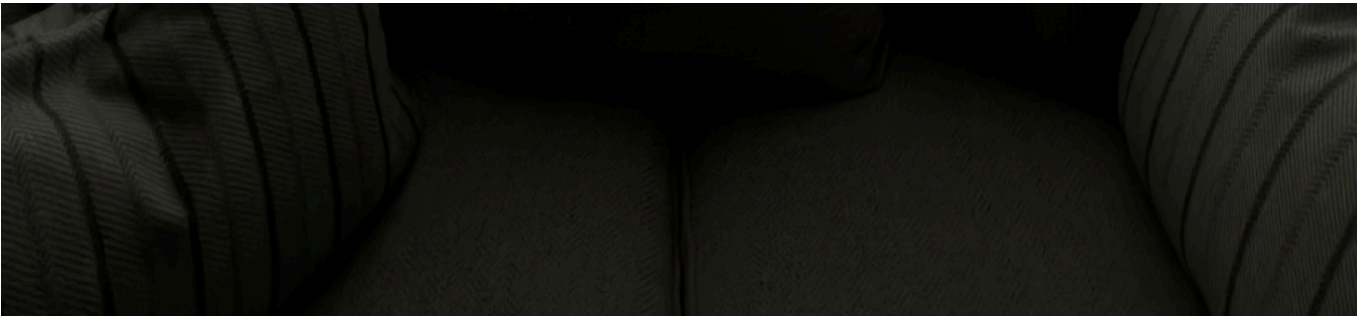
I've attached a couple of images highlighting the defect with the difference in separation distance of the tapes of the blinds and that they don't match the set of blinds on the other side of the bay window. Is it possible to arrange to get this amended? As far as I can see the current blinds can't be adjusted.

Please feel free to give me a call on 07837781425.

Best regards  
Gregor Young

Sent from my iPhone









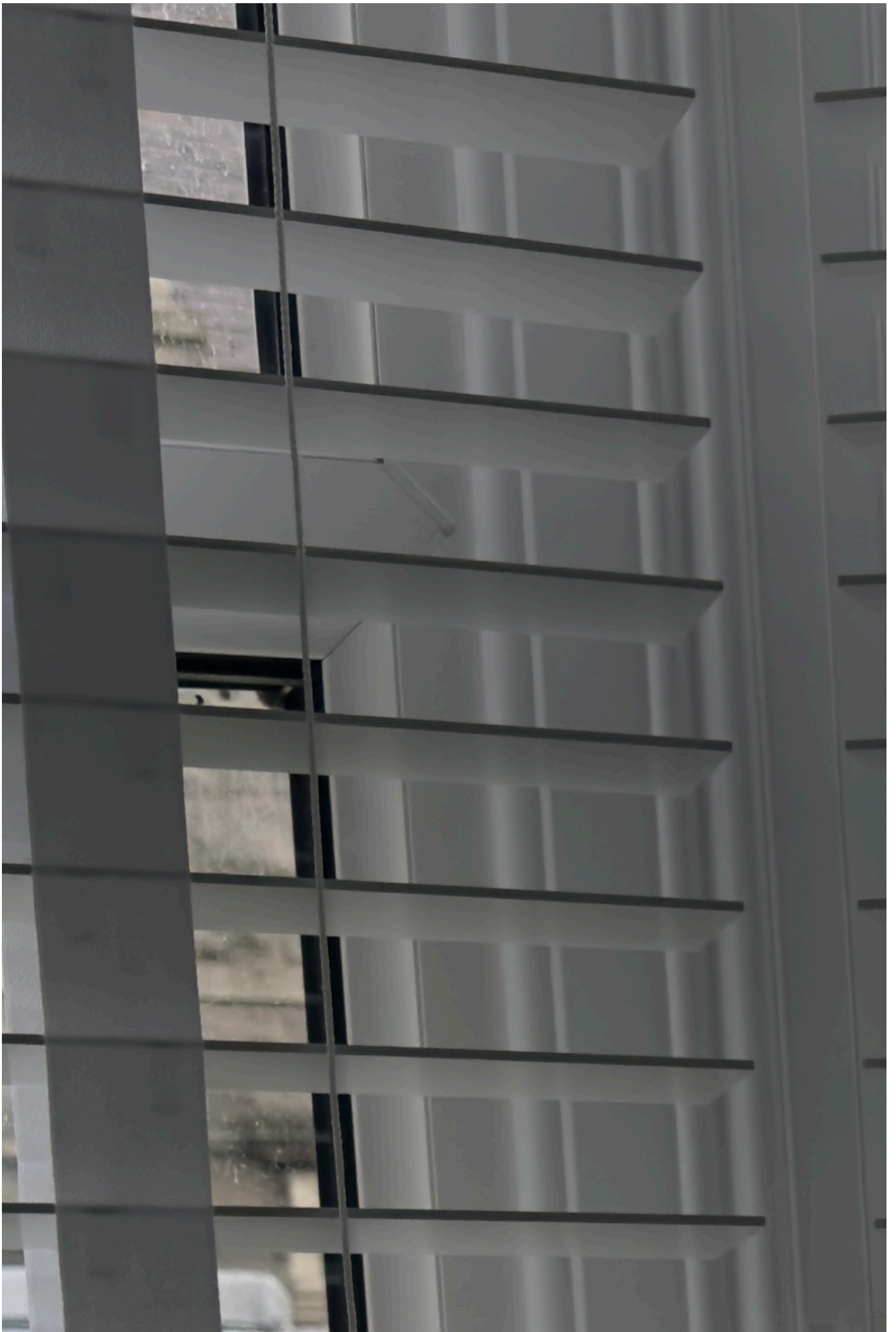












## WARNING

Young children can be strangled by loose in-pull cords, chains, tapes and wires, cords that operate the product.

To avoid strangulation and entanglement, keep cords out of the reach of young children. Cords may become wrapped around a child's neck.

Move beds, cribs and furniture away from window covering cords.

Do not tie cords together. Make sure cords do not twist and create a loop.



