

ABERDEEN BLIND COMPANY

ESTABLISHED 1952

32 Esslemont Avenue
Aberdeen
AB25 1SP

Tel: 01224 637609

Email: sales@aberdeen-blinds.co.uk

49131

**CUSTOMER
ORDER No.**

Customer's Name *Alpha Pros*

Address *MICRO PACS*

Formenton
Post Code *PA6L*

Tel. home	
Tel. work	
mobile	
email	

DATE MEASURED/ORDERED
/ /

CURTAINS	
PLEATED	
ROLLERS	
ROMANS	
SHUTTERS	
VENETIAN	
VERTICALS	
VISION	
WOODEN	

AM PM (MEASURING TIME)		
MON		
TUE		
WED		
THU		
FRI		
AM PM (FITTING TIME)		
MON		
TUE		
WED		
THU		
FRI		

P/CUST	
NET	
PRESS	
RADIO	
MAG.	
VAN	
RECC.	
SHOP	
TV	
YELL P	
OTHER	

Balance for order payable on arrangement of installation

Room	Width	Drop	Slat Size	Colour	Control LH or RH	Fitting Height	Any other Instructions	Price
	<i>3200</i>	<i>Roller Bars</i>		<i>Palette White</i>				
	<i>3 x WAVE CURTAINS + TRACKS</i>					<i>SWAY QUALITY</i>		
				<i>SEE PLANS</i>				

alum	anthracite	black	brown	champ-gold	chrome	silver	white	recess size	motorised	wood fix	stone fix	brackets top	brackets face
------	------------	-------	-------	------------	--------	--------	-------	-------------	-----------	----------	-----------	--------------	---------------

measured by	fitted by	date	CASH	CHEQUE	SPREE
<i>[Signature]</i>			INVOICE	CARD	

SAFETY DEVICES SUPPLIED WITH GOODS MUST BE FITTED BY US AT THE TIME OF INSTALLATION. REFUSAL TO ALLOW A SAFETY DEVICE TO BE FITTED WILL RESULT IN THE BLINDS NOT BEING INSTALLED. UNDER THE TERMS OF THIS CONTRACT, YOU WILL BE LIABLE TO ACCEPT DELIVERY AND PAY THE FULL AMOUNT. I have ordered the above goods and agree to pay a 50% deposit and the remaining balance when confirming the installation appointment. If payment is not made in full at that time, Aberdeen Blinds have the right to refuse to install the products until full settlement is made. Title of the goods does not pass to the customer until payment has been made in full. Declaring that there shall be no liability for normal damage occasioned by such removal.

TOTAL PRICE	£	To Be Confirmed	Special Instructions
DEPOSIT	£	PRICE ACCEPTANCE	
BALANCE	£ <i>6157 + VAT</i>	Customer's Signature	

From: Steven Nimmo
Sent: 02 October 2024 09:13
To: Sales
Subject: Fw: Micropack
Attachments: Palette.pdf; Unishade Card.pdf; 2023 Roller_System_32.pdf; 2023 Roller_System_40.pdf; 2023 45mm Single-Spring_TECHNICAL_SPEC.pdf; 6840 SILENT GLISS.pdf

Follow Up Flag: Follow up
Flag Status: Flagged

Please print off and put on desk

Kind Regards

Steven Nimmo
t. 07740851162
Aberdeen Blind Company
32 Eslemont Avenue
Aberdeen
AB25 1SP

From: Ron Coleman <ron@alpha-projects.co.uk>
Sent: Wednesday, October 2, 2024 9:09:33 AM
To: Steven Nimmo <steven@aberdeen-blinds.co.uk>
Cc: Calum Jaffray <calum@alpha-projects.co.uk>
Subject: FW: Micropack

Thanks Steve,

Can we go with option 1 for blinds and the 3no curtains please.

Order number APC-23-197.

Please liaise with Calum regarding programme for the works.

Regards

Ron Coleman
Quantity Surveyor

ALPHA PROJECTS
Construction | Fit Out | Refurbishment

Mob: [07940 772895](tel:07940772895) | Aberdeen: [01224 047074](tel:01224047074) | Dundee: [01382 522854](tel:01382522854) | Montrose: [01674 668012](tel:01674668012)
www.alpha-projects.co.uk

ABERDEEN OFFICE: Office 1 - 2 @Balmoral Hub, Balmoral Business Park, Aberdeen AB12 3JG

DUNDEE OFFICE: Tay Vision House, 324 Broughty Ferry Road, Stannergate, DD1 3NQ

MONTROSE OFFICE: The Workshop, 61 John Street, Montrose DD10 8RJ

The information in this email is confidential and may be legally privileged. It is intended solely for the addressee. Access to this email by anyone else is unauthorised. If you are not the intended recipient any disclosure, copying, distribution or any action taken or omitted to be taken, in reliance on it is prohibited and may be unlawful. If you have received this message in error, you are requested to preserve its confidentiality and advise the sender of the error in transmission. It is the responsibility of the addressee to scan this email and any attachments for viruses or any other defects. The sender does not accept liability for any loss or damage of any nature, however caused, which may result directly or indirectly from this email or any file attached. This document and any links or attachments are not to be considered contractually binding or legally enforceable unless otherwise stated in this document. Alpha Projects (SCOTLAND) LTD is a Private Limited Company. Registered in the Scotland No. 580139. Registered Office, 4 Garden Mill Place Dundee DD3 9UF Scotland.

SAVE PAPER - please do not print this email unless necessary

From: Steven Nimmo <steven@aberdeen-blinds.co.uk>

Sent: Thursday, September 26, 2024 7:35 PM

To: Calum Jaffray <calum@alpha-projects.co.uk>

Cc: Ron Coleman <ron@alpha-projects.co.uk>; Paul Bruce <paulb@alpha-projects.co.uk>

Subject: RE: Micropack

Evening,

Ref: MICROPACK, Portlethen – Blinds

Further to our recent visit, please find below our quotation to supply & install the following,

As there are no specs I discussed while on-site with Paul I would put two options forward for the Roller Blinds, standard fabric (palette) & blackout fabric (unishade).

Option 1

Ground Floor

Waiting/Break Area

3no Chain Operated Roller Blind complete with continuous chain, exposed white or silver bottom bar.

Fabric: Palette

Colour: TBC (see attached pdf)

Server

2no Chain Operated Roller Blind complete with continuous chain, exposed white or silver bottom bar.

Fabric: Palette

Colour: TBC (see attached pdf)

Small Workshop/Storage

1no Chain Operated Roller Blind complete with continuous chain, exposed white or silver bottom bar.

Fabric: Palette

Colour: TBC (see attached pdf)

Medium Workshop/Storage

1no Chain Operated Roller Blind complete with continuous chain, exposed white or silver bottom bar.

Fabric: Palette

Colour: TBC (see attached pdf)

Large Workshop/Storage

2no Chain Operated Roller Blind complete with continuous chain, exposed white or silver bottom bar.

Palette

Colour: TBC (see attached pdf)

Reception/Office

1no Chain Operated Roller Blind complete with continuous chain, exposed white or silver bottom bar.

Fabric: Palette

Colour: TBC (see attached pdf)

1st Floor

Open Plan Office

6no Chain Operated Roller Blind complete with continuous chain, exposed white or silver bottom bar.

Fabric: Palette

Colour: TBC (see attached pdf)

Meeting Room 1

1no Chain Operated Roller Blind complete with continuous chain, exposed white or silver bottom bar.

Fabric: Palette

Colour: TBC (see attached pdf)

Meeting Room 2

1no Chain Operated Roller Blind complete with continuous chain, exposed white or silver bottom bar.

Fabric: Palette

Colour: TBC (see attached pdf)

Canteen

5no Chain Operated Roller Blind complete with continuous chain, exposed white or silver bottom bar.

Fabric: Palette

Colour: TBC (see attached pdf)

Boardroom

5no Chain Operated Roller Blind complete with continuous chain, exposed white or silver bottom bar.

Fabric: Palette

Colour: TBC (see attached pdf)

Managers Office

2no Chain Operated Roller Blind complete with continuous chain, exposed white or silver bottom bar.

Fabric: Palette

Colour: TBC (see attached pdf)

Total Cost: £2846.00 + vat

Option 2

Ground Floor

Waiting/Break Area

3no Chain Operated Roller Blind complete with continuous chain, exposed white or silver bottom bar.

Fabric: Unishade Blackout

Colour: TBC (see attached pdf)

Server

2no Chain Operated Roller Blind complete with continuous chain, exposed white or silver bottom bar.

Fabric: Unishade Blackout

Colour: TBC (see attached pdf)

Small Workshop/Storage

1no Chain Operated Roller Blind complete with continuous chain, exposed white or silver bottom bar.

Fabric: Unishade Blackout

Colour: TBC (see attached pdf)

Medium Workshop/Storage

1no Chain Operated Roller Blind complete with continuous chain, exposed white or silver bottom bar.

Fabric: Unishade Blackout

Colour: TBC (see attached pdf)

Large Workshop/Storage

2no Chain Operated Roller Blind complete with continuous chain, exposed white or silver bottom bar.

Fabric: Unishade Blackout

Colour: TBC (see attached pdf)

Reception/Office

3no Chain Operated Roller Blind complete with continuous chain, exposed white or silver bottom bar.

Fabric: Unishade Blackout

Colour: TBC (see attached pdf)

1st Floor

Open Plan Office

6no Chain Operated Roller Blind complete with continuous chain, exposed white or silver bottom bar.

Fabric: Unishade Blackout

Colour: TBC (see attached pdf)

Meeting Room 1

1no Chain Operated Roller Blind complete with continuous chain, exposed white or silver bottom bar.

Fabric: Unishade Blackout

Colour: TBC (see attached pdf)

Meeting Room 2

1no Chain Operated Roller Blind complete with continuous chain, exposed white or silver bottom bar.

Fabric: Unishade Blackout

Colour: TBC (see attached pdf)

Canteen

5no Chain Operated Roller Blind complete with continuous chain, exposed white or silver bottom bar.

Fabric: Unishade Blackout

Colour: TBC (see attached pdf)

Boardroom

5no Chain Operated Roller Blind complete with continuous chain, exposed white or silver bottom bar.

Fabric: Unishade Blackout

Colour: TBC (see attached pdf)

Managers Office

2no Chain Operated Roller Blind complete with continuous chain, exposed white or silver bottom bar.

Fabric: Unishade Blackout

Colour: TBC (see attached pdf)

Cost: £3774.00 + vat

Ground Floor

Waiting/Break Area

Pair of Voile Curtains complete with 80mm Wave finish heading tape.

Approx: 5600mm wide x 2370mm drop.

Fabric: Edmond Bell Commercial Voile

Colour: TBC

Track: Silent Gliss 6840 Hand Operated Curtain Rail complete with 80mm Wave gliders.

Cost: £1549.00 + vat

Waiting/Break

1 Pair of Voile Curtains complete with 80mm Wave finish heading tape.

2830mm wide x 2370mm drop.

Fabric: Edmond Bell Commercial Voile

Colour: TBC

Track: Silent Gliss 6840 Hand Operated Curtain Rail complete with 80mm Wave gliders.

Cost: £881.00 + vat

First Floor

Managers Office

1 Single Voile Curtain stacking on right hand side complete with 80mm Wave finish heading tape.

2750mm wide x 2370mm drop.

Fabric: Edmond Bell Commercial Voile

Colour: TBC

Track: Silent Gliss 6840 Hand Operated Curtain Rail complete with 80mm Wave gliders.

Cost: £881.00 + vat

If you have any further questions or wish to proceed, please contact myself where I am happy to assist.

Kind Regards

Steven Nimmo

m. 07740851162 t.01224 637609*

Aberdeen Blind Company

32 Esslemont Avenue

Aberdeen, AB25 1SP

e. steven@aberdeen-blinds.co.uk

w. www.aberdeen-blinds.co.uk

ABERDEEN
BLIND COMPANY
ESTABLISHED 1952

From: Calum Jaffray <calum@alpha-projects.co.uk>

Sent: 25 September 2024 15:50

To: Steven Nimmo <steven@aberdeen-blinds.co.uk>

Cc: Ron Coleman <ron@alpha-projects.co.uk>; Paul Bruce <paulb@alpha-projects.co.uk>

Subject: FW: Micropack

Afternoon

See below, this is for a contract we're working on at Micropack in Portlethen, it's up past the newish primary school on school brae.

Can you arrange to visit Paul Bruce on site to survey the blinds, they can all be site sized now and forward suggestions for the sheer curtains.

If you can return price that would be much appreciated.

Paul has drawings on site showing where the sheer curtains are to go.

Regards

Calum Jaffray

Contracts Manager

ALPHA PROJECTS

Construction | Fit Out | Refurbishment

Mobile: [07394 662171](tel:07394662171) Aberdeen: [01224 047074](tel:01224047074) | Dundee: [01382 522854](tel:01382522854) | Montrose: [01674 668012](tel:01674668012)

www.alpha-projects.co.uk

ABERDEEN OFFICE: Office 1 - 2 @Balmoral Hub, Balmoral Business Park, Aberdeen AB12 3JG

DUNDEE OFFICE: Tay Vision House, 324 Broughty Ferry Road, Stannergate, DD1 3NQ

MONTROSE OFFICE: The Workshop, 61 John Street, Montrose DD10 8RJ

The information in this email is confidential and may be legally privileged. It is intended solely for the addressee. Access to this email by anyone else is unauthorised. If you are not the intended recipient any disclosure copying, distribution or any action taken or omitted to be taken, in reliance on it is prohibited and may be unlawful. If you have received this message in error, you are requested to preserve its confidentiality and advise the sender of the error in transmission. It is the responsibility of the addressee to scan this email and any attachments for viruses or any other defects. The sender does not accept liability for any loss or damage of any nature, however caused, which may result directly or indirectly from this email or any file attached. This document and any links or attachments are not to be considered contractually binding or legally enforceable unless otherwise stated in this document. Alpha Projects (SCOTLAND) LTD is a Private Limited Company. Registered in the Scotland No. 580139. Registered Office, *4 Garden Mill Place Dundee DD3 9UF Scotland.

SAVE PAPER - please do not print this email unless necessary

From: Rosie <Rosie@jfarchitect.co.uk>

Sent: 25 September 2024 15:36

To: Calum Jaffray <calum@alpha-projects.co.uk>

Subject: RE: Micropack

Hi Calum,

The blinds are to be roller blinds please. For the curtains, I was thinking white sheer, if your supplier suggests some commercial fabric companies, I can select a product?

Kind Regards,

Rosie

Rosie Anderson

Associate | Interior Designer

ani Architect Ltd
h Road,
e
4JW
osie@jfarchitect.co.uk
www.jfarchitect.co.uk
01382224828



JON FRULLANI
ARCHITECT

From: Calum Jaffray <calum@alpha-projects.co.uk>
Sent: 25 September 2024 15:32
To: Rosie <Rosie@jfarchitect.co.uk>
Subject: Micropack

Hi Rosie

I`m just double checking things on the blinds and shear curtains at Micropack.
I have noted that the blinds are to be white, are these to be rollers or vertical slats.
Also is there any particular spec you had in mind for the shear curtains ?

Regards
Calum Jaffray
Contracts Manager

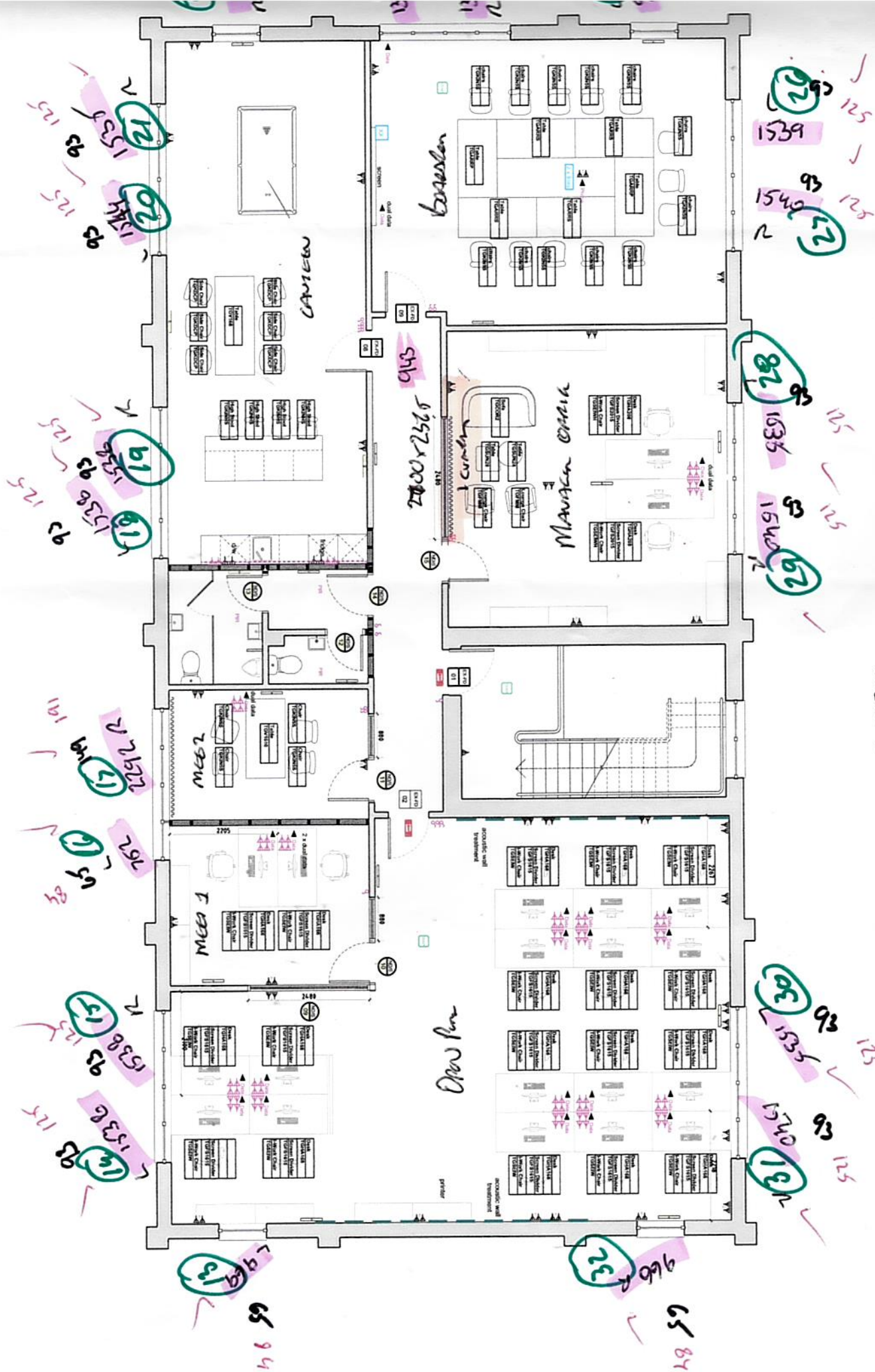
ALPHA PROJECTS
Construction | Fit Out | Refurbishment

Mobile: [07394 662171](tel:07394662171) Aberdeen: [01224 047074](tel:01224047074) | Dundee: [01382 522854](tel:01382522854) | Montrose: [01674 668012](tel:01674668012)
www.alpha-projects.co.uk

ABERDEEN OFFICE: Office 1 - 2 @Balmoral Hub, Balmoral Business Park, Aberdeen AB12 3JG
DUNDEE OFFICE: Tay Vision House, 324 Broughty Ferry Road, Stannergate, DD1 3NQ
MONTROSE OFFICE: The Workshop, 61 John Street, Montrose DD10 8RJ

The information in this email is confidential and may be legally privileged. It is intended solely for the addressee. Access to this email by anyone else is unauthorised. If you are not the intended recipient any disclosure, copying, distribution or any action taken or omitted to be taken, in reliance on it is prohibited and may be unlawful. If you have received this message in error, you are requested to preserve its confidentiality and advise the sender of the error in transmission. It is the responsibility of the addressee to scan this email and any attachments for viruses or any other defects. The sender does not accept liability for any loss or damage of any nature, however caused, which may result directly or indirectly from this email or any file attached. This document and any links or attachments are not to be considered contractually binding or legally enforceable unless otherwise stated in this document. Alpha Projects (SCOTLAND) LTD is a Private Limited Company. Registered in the Scotland No. 580139. Registered Office, 4 Garden Mill Place Dundee DD3 9UF Scotland.

SAVE PAPER - please do not print this email unless necessary



for 2400
wed dr

B/O 2331
Snow 1750

CURRANS
APRIL
881

22 ✓ 84
974 ✓

25 ✓ 84 110
1340 ✓

24 ✓ 84 110
1340 ✓

25 ✓ 94
961 ✓

21 ✓ 1537 ✓ 93 125
20 ✓ 1544 ✓ 93 125

19 ✓ 1536 ✓ 93 125
18 ✓ 1538 ✓ 93 125

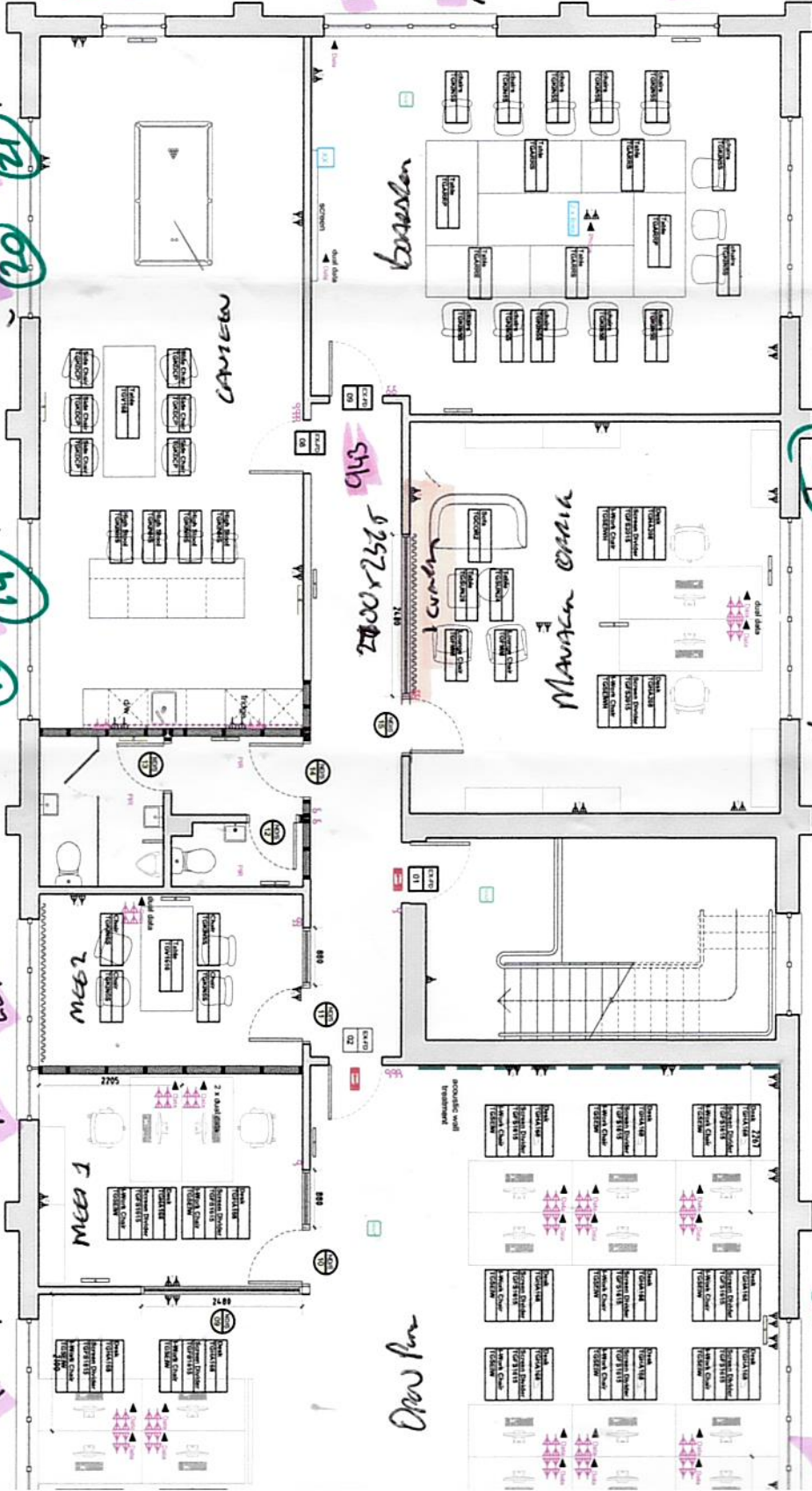
17 ✓ 1911 ✓ 83
16 ✓ 1912 ✓ 83

15 ✓ 1538 ✓ 93 125
14 ✓ 1536 ✓ 93 125

23 ✓ 1539 ✓ 93 125
22 ✓ 1540 ✓ 93 125

82 ✓ 1535 ✓ 93 125
81 ✓ 1540 ✓ 93 125

83 ✓ 1535 ✓ 93 125
82 ✓ 1537 ✓ 93 125



For 2400
1160 dh