

Aberdeen Blind Co
 32 Esslemont Avenue
 Aberdeen
 AB25 1SP

Tel No: 01224 637609

email: sales@aberdeen-blinds.co.uk

Curtain Fax Back Order form

Customer Name:
 Delivery Address:
ABREDEEN BLIND CO SHOP

Date: 27/6/23
 Required Date: 12/07/23
 Customer Ref:
46012 Robertson
 Contact: Steve

Curtain Ref	Single / Pair	No of Widths	Drop	Fabric Range & Colour (Also code if applicable eg. PR5111)	Fabric Supplier	Pattern repeat	Heading Type (Pinched Pleat, Double Pleat, Goblet, Standard)	Headed Size (For Pinched Pleat, Double Pleat and Goblet Headings)	Hook Position (Top / Middle / Bottom)	Lined / B/Out / Unlined	Lining Colour	Tiebacks (YES / NO)	Eyelet / D-Ring Colour (if req'd)	Track or Pole req (YES / NO)
	Single	3	2000	White Sharn			1 1/2 Pinch		X	X	X	X	X	X
	Single	3	2000	Magac			1 1/2 Pinch		X					

Special Instructions:

3 Widths 14 Pinch 2000mm Wide - Need To Sit 500mm Track

Qty	Supplier	Width	Pole or track description (Curtain Track / Cubicle Track / 1080 etc)	Part Code	Brackets req?	Extras required (Hanger Rods / Fixing Kits etc)

Special Instructions:

Please state how curtains have been measured i.e from top of pole or from top to bottom of curtain. If Matching tiebacks are required, please state which colour of "D" ring required or if any piping required in the special instructions box.

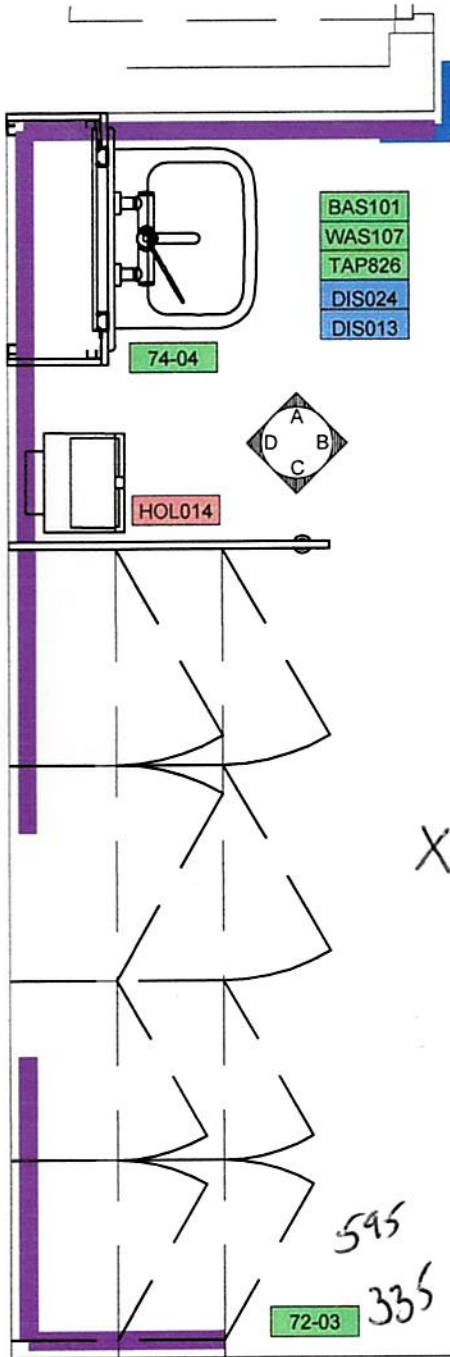
HUTCHINSON WOODS - WOODS

STUART WALKER @ ROBERTSON.CO.UK

07462917194

PR
RC
SC

PROPOSED PREPARATION AREA - ELEVATION B
ROOM LAYOUT
SCALE 1:20 @ A2



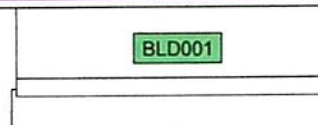
REF. (ADB code where applicable, work package reference where no ADB code applies)	DESCRIPTION	QUANTITY		GROUP	WORK PACKAGE
		NEW	TRANSFER		
72-03	Base units, each with shelf door front. Wall units, each with shelf and door front. All doors lockable. Bullnosed front edge worktop (no rear upstand), HPL finish all faces and edges with particleboard core.	1	0	1	72 - fitted furniture
74-04	IPS, floor to ceiling, 700W 300D. With single splashscreen.	1	0	1	74 - IPS/Sanitaryware
OUT010	SOCKET outlet, switched, 13 amp, twin.	4	0	1	M&E
CAL005	PUSH BUTTON staff emergency call, reset and integral/adjacent indicator lamp, under desk mounted.	1	0	1	M&E
CAL002	PUSH BUTTON patient/staff call, wall mounted	1	0	1	M&E
CAL012	RESET UNIT, with repeat lamp, patient/staff call	1	0	1	M&E
CAL020	LAMP repeat staff emergency call, wall mounted, (green)	1	0	1	M&E
OUT470	OUTLET, oxygen, medical	0	1	1	M&E
OUT475	OUTLET, vacuum, medical	0	1	1	M&E
BLD001	BLIND, window, vertical, wipeable vinyl blade, top track, no bottom chain, twist control rod. Size to suit installation.	0	1	1	76 - blinds and curtains
BAS101	BASIN, medium, hospital pattern, vitreous china, no tapholes, no overflow, integral back outlet. 500W 400D. HTM64LBHM.	1	0	1	74 - IPS/Sanitaryware
TAP826	TAP bib, single lever, hospital pattern, 2x 1/2 in. inlets, integral thermostatic combination mixer, single flow, fixed horizontal nozzle. Sequential operation. HTM64TBH2a	1	0	1	74 - IPS/Sanitaryware
WAS107	TRAP, bottle, 1 1/4 in., plastic resealing. HTM64TRR1/P	1	0	1	74 - IPS/Sanitaryware
TRA130	TRACK, curtain, two sided, L-shape, curved, 2750L 2250W, with fillet to top of track, complete with 2 curtains.	1	0	1	76 - blinds and curtains
DIS013	DISPENSER, paper towel, wall mounted.	1	0	2	
DIS024	DISPENSER, soap, wall mounted.	1	0	2	
DIS026	DISPENSER, medical hand sanitizer, lever action, wall mounted.	1	0	2	
HOL014	HOLDER, sack, with foot operated lid, large, capacity 120 litre, mobile.	1	0	3	
COU007	COUCH, examination/treatment, (2 section), with paper roll holder, variable height, retractable wheels	0	1	3	

Assume existing power outlets, light switches, etc retained, or otherwise relocated. New outlets noted above if not already present near position noted on proposal.

rad

595
335

PROPOSED PREPARATION AREA - PLAN
ROOM LAYOUT
SCALE 1:20 @ A2



CURTAIN - COLOUR?

ROBSON TO SUPPLY 2 x WOOD 12m PAPS

FACE TO PB WALL X 2

TOP TO TILE X 2?

NOTE: INSERT RADIATOR