

ABERDEEN BLIND COMPANY

32 Esslemont Avenue
Aberdeen
AB25 1SP

45125

CUSTOMER ORDER No.

ESTABLISHED 1952

Tel: 01224 637609

Fax: 01224 631172

Email: sales@aberdeen-blinds.co.uk

Customer's Name **DEBBIE BLACKWOOD**

Address **9 KINGSWELL VIEW**

W-Hue

Post Code **AB32 6RZ**

DATE MEASURED/ORDERED
03 02 12

AM PM (MEASURING TIME)

MON			
TUE			
WED			
THU			
FRI			

AM PM (FITTING TIME)

MON			
TUE			
WED			
THU			
FRI			

P/CUST	
NET	
PRESS	
RADIO	
MAG.	
VAN	
RECC.	
SHOP	
TV	
YELL P	
OTHER	

CURTAINS	
PLEATED	
ROLLERS	
ROMANS	
SHUTTERS	
VENETIAN	
VERTICALS	
VISION	
WOODEN	

Tel. home	
Tel. work	
mobile	07485729880
email	

ALL BLINDS TO BE PAID FOR AT TIME OF FITTING

Room	Width	Drop	Slat Size	Colour	Control LH or RH	Fitting Height	Any other Instructions	Price		
30 Lounge	2228	1580								
30 ↓	2228	1580								
15 ↓	859	1220								
12 Lounge	560	1070				SPRING				
26 ↓	1757	1140								
26 ↓	1968	2020								
26 ↓	1788	1800								
15 Lounge	859	1070								
26 ↓	1759	1810								
15 Lounge	860	1070				SPRING				
26 Bed 4	1757	1130								
15 Lounge	558	1220				SPRING				
26 Bed 3	1758	1370								
26 Bed 2	1755	1370								
15 Lounge	562	1220				SPRING				
15 Bed 1	558	1220				SPRING				
			champ-gold	chrome	silver	white	size motorised	wood fix	stone fix	brackets top face

measured by	fitted by	date	CASH	CHEQUE	SPREE
<i>[Signature]</i>			INVOICE	CARD	

ALL GOODS MANUFACTURED AFTER 17 APRIL 2011 MUST COMPLY WITH NEW CHILD SAFETY LAWS. SAFETY DEVICES SUPPLIED WITH GOODS MUST BE FITTED BY US AT THE TIME OF INSTALLATION. REFUSAL TO ALLOW A SAFETY DEVICE TO BE FITTED WILL RESULT IN THE GOODS NOT BEING INSTALLED. UNDER THE TERMS OF THIS CONTRACT YOU WILL BE LIABLE TO ACCEPT DELIVERY AND PAY THE FULL AMOUNT. These terms and conditions apply to all goods and services supplied and the remaining balance on the day of fitting. If payment is not made in full at that time Aberdeen Blinds has the right to remove the goods and not be liable for removal. The title of the goods does not pass to the customer until payment has been made in full. Declaring that there shall be no liability for normal damage occasioned by such removal.

TOTAL PRICE **£5286**
DEPOSIT **£2643**
BALANCE **£2643**

To Be Confirmed
PRICE ACCEPTANCE
Customer's Signature

Special Instructions
**See Plans - Midea Gears
white motor
white switches
5x ~~NOSE~~ ~~COVER~~ ~~ON~~
~~MAJOR~~ ~~WORK~~
WHITE**

[Signature]

Sales

From: Sales
Sent: 08 February 2023 12:49
To: Family Blackwood
Subject: Blinds

Morning All,

Lounge

3no Battery Operated Roller Blinds complete with large open headbox with co-ordinating fabric complete with wrap round bottom bar.

Fabric: Glimpse Oyster

Cost: £1175.00

Utility

1no Spring Operated Roller Blind complete with large open headbox with co-ordinating fabric complete with wrap round bottom bar & white operating handle.

Fabric: Glimpse Oyster

Cost: £95.00

Family Area

4no Battery Operated Roller Blinds complete with large open headbox with co-ordinating fabric complete with wrap round bottom bar.

Fabric: Glimpse Oyster

Cost: £1429.00

Bathroom

1no Spring Operated Roller Blind complete with large open headbox with co-ordinating fabric complete with wrap round bottom bar & white operating handle.

Fabric: Glimpse Oyster

Cost: £95.00

Bedroom 2

1no Battery Operated Roller Blind complete with large open headbox with co-ordinating fabric complete with wrap round bottom bar.

Fabric: Glimpse Oyster

Cost: £353.00

Bedroom 2 En-suite

1no Spring Operated Roller Blinds complete with large open headbox with co-ordinating fabric complete with wrap round bottom bar & white operating handle .

Fabric: Glimpse Oyster

Cost: £95.00

Bedroom 3

1no Battery Operated Roller Blind complete with large open headbox with co-ordinating fabric complete with wrap round bottom bar.

Fabric: Glimpse Oyster

Cost: £353.00

Bedroom 4

1no Battery Operated Roller Blind complete with large open headbox with co-ordinating fabric with wrap round bottom bar.

Fabric: Glimpse Oyster

Cost: £346.00

Bedroom 4 En-suite

1no Spring Operated Roller Blinds complete with large open headbox with co-ordinating fabric complete with wrap round bottom bar & white operating handle .

Fabric: Glimpse Oyster

Cost: £95.00

Master Bedroom

2no Battery Operated Roller Blind complete with large open headbox with co-ordinating fabric complete with wrap round bottom bar.

Fabric: Glimpse Oyster

Cost: £678.00

Master Bedroom En-suite

1no Spring Operated Roller Blinds complete with large open headbox with co-ordinating fabric complete with wrap round bottom bar & white operating handle .

Fabric: Glimpse Oyster

Cost: £113.00

The smooth switches are charged at the following:

4 channel wall switches: £65.00 each.

Single channel wall switch: £35.00 each.

My counting is you would need 3 x single and 3 x 4 channel, totalling £300.00.

The bedroom switch will be able to link to operate the Lounge & Family area.

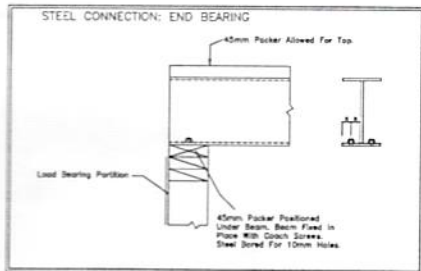
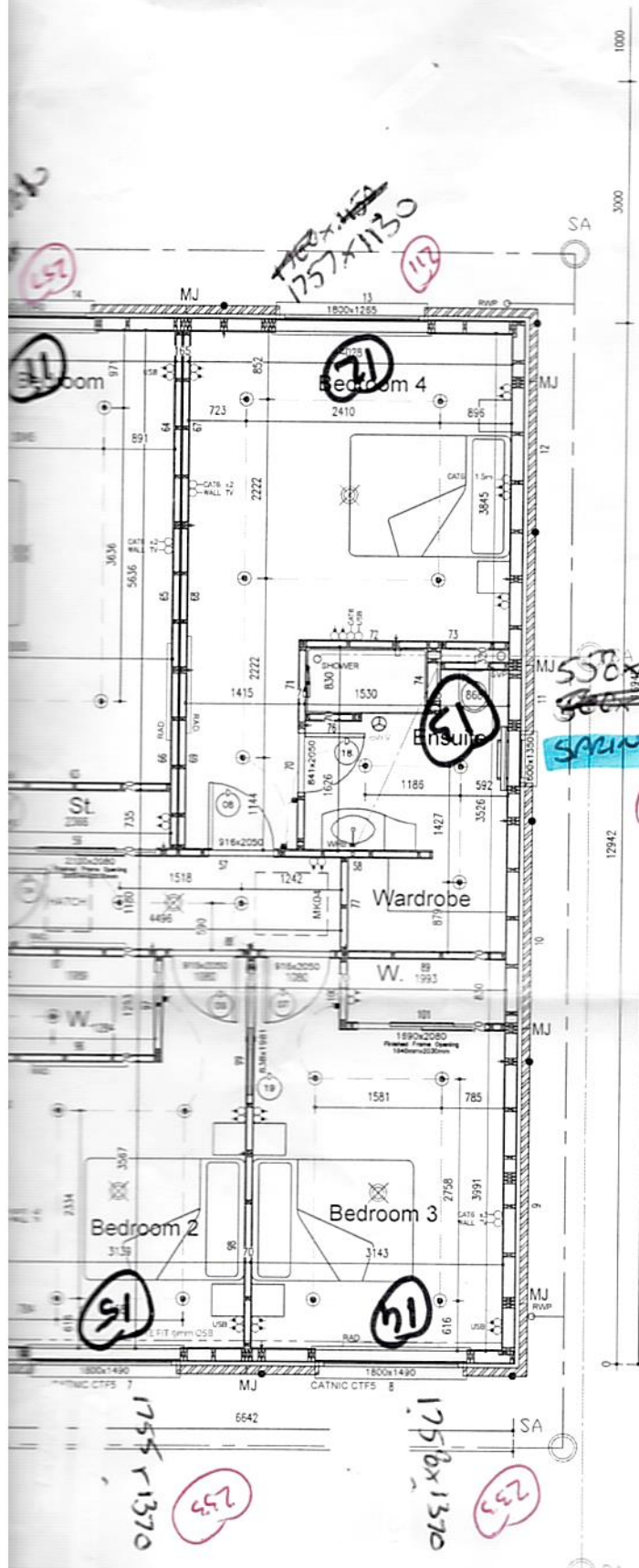
Notes:

White Headbox complete with white Endcaps and co-ordinating fabric.

All motors are SOMFY which come with 5yr warranty.

SOMFY hub to allow control via Google or Alexa and App is £159.00.

Roller Dept said they will do the wrap round bottom bar for the 2 large blinds in the Lounge, just can't guarantee it.



STEEL SCHEDULE		
Beam 2.1	152x89x16 UB	- 1 No.
Beam 2.2	152x89x16 UB	- 1 No.

ALL LOAD BEARING EXTERNAL KIT PANEL LINTELS WILL BE TYPE 14 (90X220mm C24) OR TYPE 15 (135X220mm C24) UNLESS OTHERWISE STATED.

ALL LOAD BEARING INTERNAL KIT PANEL LINTELS WILL BE TYPE 14 (90X220mm C24) UNLESS OTHERWISE STATED.

- Panel 3 To Be Fixed To Locating Plate & Headbinder @ 300mm Crs.
- Panels 4-5 To Be Fixed To Locating Plate & Headbinder @ 450mm Crs.
- Panel 6 To Be Fixed To Locating Plate & Headbinder @ 300mm Crs.
- Panels 7-8 To Be Fixed To Locating Plate & Headbinder @ 450mm Crs.
- Panels 9-12 To Be Fixed To Locating Plate & Headbinder @ 250mm Crs.
- Panels 13-16 To Be Fixed To Locating Plate & Headbinder @ 400mm Crs.
- Panels 21-22 To Be Fixed To Locating Plate & Headbinder @ 300mm Crs.
- Panel 25 To Be Fixed To Locating Plate & Headbinder @ 300mm Crs.
- Panel 26-27 To Be Fixed To Locating Plate & Headbinder @ 300mm Crs.
- All Other Panels Fixed @ Standard Crs.

- * - Indicates Pre-fitted 18mm PLY To Internal Panels & To Which Side It's Fitted.
- * - Indicates Pre-fitted 9mm OSB To Internal Panels & To Which Side It's Fitted.
- This Indicates Where OSB Needs To Be Fitted On Site.
- - Denotes Approximate Position of Holding Down Strap

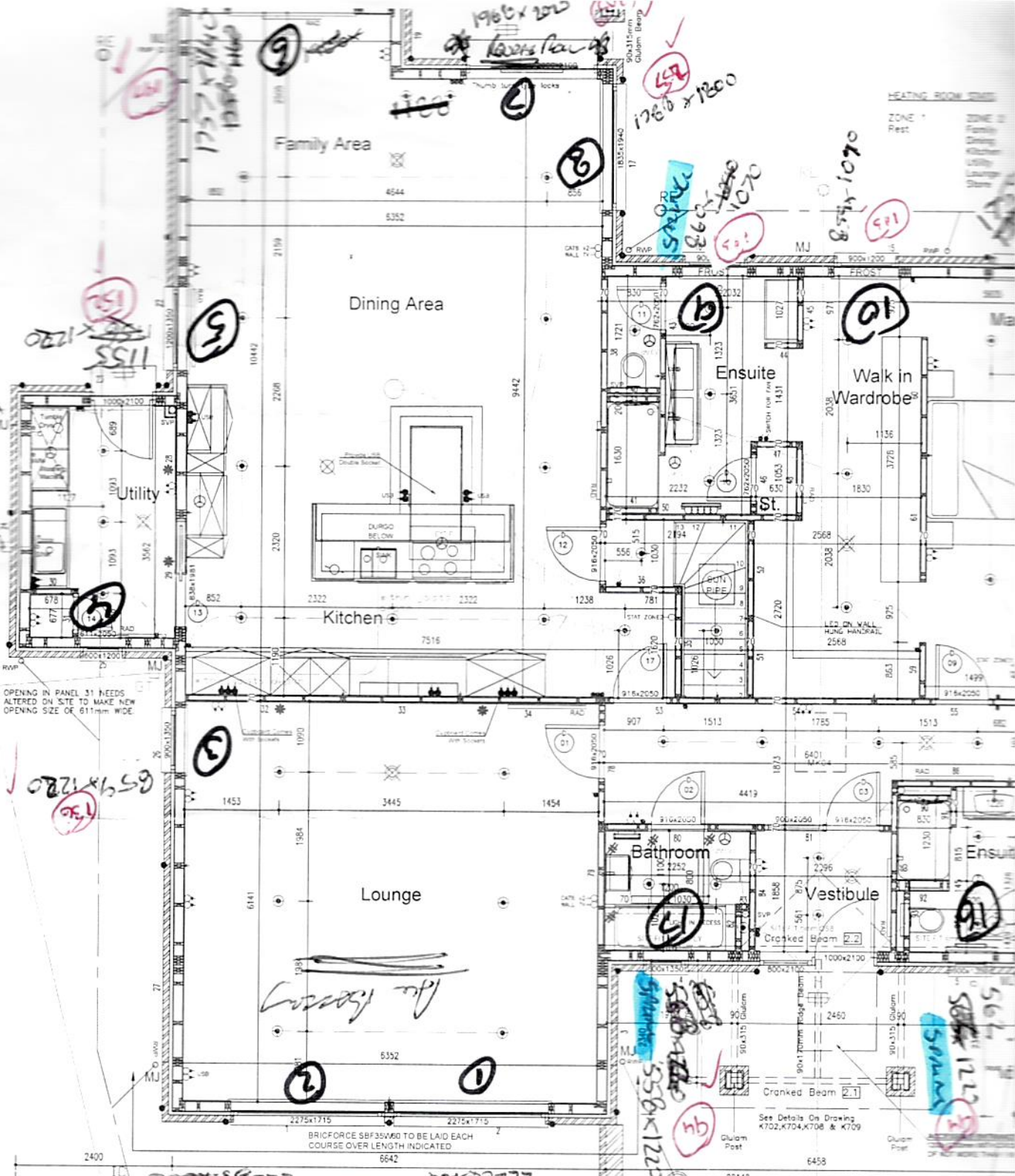
*Draw Box White
Curved w/box Gaskets*

*Grate 890x1120
White 70mm w/box
SARINA GOS
White w/box*

*1758x1120
28 27
08 17
1758x1120*

READ IN COI FOLLOW
120834
120834
120834
120834
120834
120834
120834
120834
120834
120834
120834

Brian Davidson



OPENING IN PANEL 31 NEEDS ALTERED ON SITE TO MAKE NEW OPENING SIZE OF 611mm WIDE

BRICFORCE SBF35W60 TO BE LAID EACH COURSE OVER LENGTH INDICATED

TO FOUL WATER DISCONNECTING MH

TO FOUL WATER DISCONNECTING MH

*Over
Remove some C-Bands
Remove Surround*

180.65

DROP SHAFT

See Details On Drawing K702, K704, K706 & K709