

Steven Nimmo

From: Jonny Goodban <jonny@newtondee.org.uk>
Sent: 15 April 2022 16:02
To: Steven Nimmo
Subject: Re: New Build, Camphill Estate

Hi steven,

Thank you so much for all of this.

Below is the final decision using the template you used above. The TBC's have all been confirmed with the selections Highlighted in **Bold** where needed

I have also added the baby room on the first floor which didn't appear below.

The 3rd bedroom (east facing) on the corner over the drive.

(There was the small window behind the wardrobe and the larger window over the road)

The additional cost of the baby room please just add it in to the total, we appreciate the pricing and are happy to proceed.

Thank you for all your help, we look forward to the confirmation.

Best regards,

Jonny and Tania

Ground Floor

Bed/sit

2no INTU Screw-fit Blackout Pleated Blinds

Fabric: Honeycomb

1no Chain Operated Roller Blind

Fabric: Iona

2no Single Curtains complete with Blackout Lining and Silent Gliss 1080 Curtain Rail

Fabric:

Mayfield- Fleur Ochre

Cost: £1228.00 + vat

Laundry

1no Chain Operated Roller Blin

Fabric: Iona

Cost: £125.00 + vat

External Larder

1no Chain Operated Roller Blind

Fabric: Iona

Cost: £105.00 + vat

Dining Room

1no Pair of Eyelet Curtains complete with wooden pole

Fabric: TBC

COUNTRY LIVING, Grassington Midnight

Cost: £543.00 + vat

Sitting Room

3no Pairs of Eyelet Curtains complete with wooden poles

Fabric: TBC

COUNTRY LIVING, Grassington Midnight

1no Screw Pleated Blind

Fabric: Festival SPC

Cost: £2199.00 + vat

Rooflight

1no Electrically Operated Blackout Roller Blind complete with RTS handset

Fabric: Meridan

Cost: £1589.00 + vat

Bedrooms 1,2 & 3

1no Pair of Curtains complete with Blackout Linings and Silent Gliss 1080 curtain rail

Fabric: TBC

Mayfield- Fleur Ochre

Cost: £433.00 + vat (each room)

Bedroom 4

1no Pair of Curtains complete with Blackout Linings and Silent Gliss 1080 curtain rail

Fabric: TBC

Mayfield- Fleur Ochre

Cost: £650.00 + vat

First Floor

Bedroom 1

1no Single Curtain complete with Blackout Lining and Silent Gliss 1080 curtain rail

Fabric: TBC

Mayfield- Fleur Ochre

2no INTU Screw-fit Blackout Pleated Blinds

Fabric: Honeycomb

Cost: £862.00 + vat

Bedroom 2

1no Pair of Curtains complete with Blackout Lining and U shaped Silent Gliss curtain rail (so curtain opens past windows)

Fabric: TBC

Mayfield- Fleur Ochre

Cost: £528.00 + vat

Bedroom 1

1no Pair of Curtains complete with Blackout Lining and Silent Gliss 1080 curtain rail

Fabric: TBC

MAYFIELD, Grasmere Taupe

Cost: £365.00 + vat

Bedroom 2

1no Pair of Curtains complete with Blackout Lining and Silent Gliss 1080 curtain rail

Fabric: TBC

**MAYFIELD, Grasmere
Taupe**

Cost: £365.00 + vat

Bedroom 3

Curtains complete with Blackout Lining and Silent Gliss 1080 curtain rail

Fabric:

Nostalgia- Amberly Heather

Sitting Room

2no Chain Operated Roller Blinds

Fabric: Iona

2no INTU Screw-fit Blackout Pleated Blinds

Fabric: Honeycomb

Cost: £620.00 + vat

Study Area

1no Chain Operated Roman Blind complete with Blackout Lining

Fabric:

Nostalgia- Rivington Burnt Sienna

Signed J.M.Goodban

From: Steven Nimmo <steven@aberdeen-blinds.co.uk>

Sent: Wednesday, April 13, 2022 12:57:51 PM

To: Jonny Goodban <jonny@newtondee.org.uk>

Subject: New Build, Camphill Estate

Johnny

Ref: HMO Accommodation at O`Tell Site, Newton Dee, Bielside – Blinds & Curtains

Further to our recent visit, please find below our quotation to supply and install the following,

Notes:

I have based costs for the bedroom using Silent Gliss 1080 curtain rail as I seem to think there was a reason we didn't go with poles in the bedrooms, if you proceed, I can look at this on my return visit to site, the costs will remain the same.

Ground Floor

Bed/sit

2no INTU Screw-fit Blackout Pleated Blinds

Fabric: Honeycomb

1no Chain Operated Roller Blind

Fabric: Iona

2no Single Curtains complete with Blackout Lining and Silent Gliss 1080 Curtain Rail

Fabric:

Cost: £1228.00 + vat

Steven Nimmo

From: Jonny Goodban <jonny@newtondee.org.uk>
Sent: 30 March 2022 20:22
To: Steven Nimmo
Subject: Re: Curtains

Hi Steven,

We, my wife and I, have (after much haggling, deliberating and, dare I say, blood loss and bruising on my part) come to a firm agreement for what we would like in Aspen house, Newton Dee, Needless to say, there we a couple of changes made since we walked around the house which I have outlined in **bold** which I hope are straightforward.

I saw you making comprehensive notes for when we went around the house so I hope you are able to understand where I mean with the following:

(All need to be FR and blackout unless stated please, I trust your knowledge of what fabrics work for both- favoured towards the cheaper end)

Style, colour/design

- Downstairs Sitting room and Dining room **curtains** in Both- COUNTRY LIVING, Grassington Midnight (could you please quote for COUNTRY LIVING, Bedale linen too)
- Laundry and Pantry blinds- TUNDRA, Putty (BL not essential)
- All Bedrooms downstairs and the 2 bedrooms upstairs (**all Eyelet curtains**(including French windows) south facing towards muck heap)- MAYFIELD, Grasmere Slate Blue (could you also quote for the MAYFIELD, Moorhouse Ochre please)
- 2 out of 3 bedrooms in flat and sitting room/kitchen but NOT baby room (**Baby room is next door** to Master Bedroom, this has changed from the east facing room overlooking the road) - MAYFIELD, Grasmere Taupe
- Baby room in flat **Curtains not French blind**- MAYFIELD, Amberly Heather

Additional questions

Can you do wooden curtain rails for the all the curtains in the house? Even with eyelets?

How long approximately would it take to construct and install please?

Thank you for your time and patience,

Best regards

Jonny Goodban

From: Steven Nimmo <steven@aberdeen-blinds.co.uk>
Sent: Tuesday, March 29, 2022 12:53:13 PM
To: Jonny Goodban <jonny@newtondee.org.uk>
Subject: Curtains

Good Afternoon Jonathan,

Laundry

1no Chain Operated Roller Blind

Fabric: Iona

Cost: £125.00 + vat

External Larder

1no Chain Operated Roller Blind

Fabric: Iona

Cost: £105.00 + vat

Dining Room

1no Pair of Eyelet Curtains complete with wooden pole

Fabric: TBC

Cost: £543.00 + vat

Sitting Room

3no Pairs of Eyelet Curtains complete with wooden poles

Fabric: TBC

1no Screw Pleated Blind

Fabric: Festival SPC

Cost: £2199.00 + vat

Rooflight

1no Electrically Operated Blackout Roller Blind complete with RTS handset

Fabric: Meridan

Cost: £1589.00 + vat

Bedrooms 1,2 & 3

1no Pair of Curtains complete with Blackout Linings and Silent Gliss 1080 curtain rail

Fabric: TBC

Cost: £433.00 + vat (each room)

Bedroom 4

1no Pair of Curtains complete with Blackout Linings and Silent Gliss 1080 curtain rail

Fabric: TBC

Cost: £650.00 + vat

First Floor

Bedroom 1

1no Single Curtain complete with Blackout Lining and Silent Gliss 1080 curtain rail

Fabric: TBC

2no INTU Screw-fit Blackout Pleated Blinds

Fabric: Honeycomb

Cost: £862.00 + vat

Bedroom 2

1no Pair of Curtains complete with Blackout Lining and U shaped Silent Gliss curtain rail (so curtain opens past windows)

Fabric: TBC

Cost: £528.00 + vat

Bedroom 1

1no Chain Operated Roman Blind complete with Blackout Lining
complete with Blackout Lining and Silent Gliss 1080 curtain rail

Fabric: TBC

OR

1no Pair of Curtains

Fabric: TBC

Cost: £409.00 + vat

Cost: £365.00 + vat

Bedroom 2

1no Chain Operated Roman Blind complete with Blackout Lining complete with Blackout Lining and Silent Gliss 1080 curtain rail

Fabric: TBC

Cost: £385.00 + vat

OR

1no Pair of Curtains

Fabric: TBC

Cost: £365.00 + vat

Sitting Room

2no Chain Operated Roller Blinds

Fabric: Iona

2no INTU Screw-fit Blackout Pleated Blinds

Fabric: Honeycomb

Cost: £620.00 + vat

Study Area

1no Chain Operated Roman Blind complete with Blackout Lining

Fabric: TBC

Cost: £455.00 + vat

Lead time will be between 3-4 weeks once order has been placed.

If you have any further questions or wish to proceed, please contact myself where I am happy to assist.

Kind Regards

Steven Nimmo

m. 07740851162 t.01224 637609

Aberdeen Blind Company

32 Esslemont Avenue

Aberdeen, AB25 1SP

e. steven@aberdeen-blinds.co.uk

w. www.aberdeen-blinds.co.uk



Newton Dee Camphill Community Ltd

Bielside, Aberdeen AB15 9DX Tel: 01224 868 701

Newton Dee Camphill Community is a registered charity SC043417 in Scotland, and is a non-profit company limited by guarantee SC427688 in Scotland.

A member of the Association of Camphill Communities.

This email is confidential, so are any files sent with it. If you are not the intended recipient, then do not use it or share it unless you have first received permission from Newton Dee Camphill Community Ltd. Any opinions expressed are the opinions of the author, not Newton Dee.

ORDER CONFIRMATION

UM 37587



Customer:	Aberdeen Blind Co Ltd	Order Date:	29/4/2022
Contact Name:	Steven Nimmo	Despatch Date:	16/5/2022

Quote no.:	37587
Customer PO no.:	NEWTON DEE 43321

Total Quantity	Total Price
1	£862.88

System	Blind No.	Qty	Width	Drop	Operation	Fabric Joins	Tube Dia.	Hem Bar	Hem Bar Colour	Hardware Colour	Fabric		Cassette / Fascia		Brackets	Handing	Total Control Lm	Cable Exit	Sido Channel	Easo Channel		Bottom Angle	Curt Ref	Notes	Unit RRP	Unit Price	Total
											Type	Colour	Type	Shape						LH	RH						
KuroLok 100 RL	1	1	2360	1566	Radio - RTS - Somfy Altus 40 9/16	0	65	Z	White	White	Spectrum 1050, 2m	White	Cassette	Square		Right		3	Channel	Reveal	Reveal	No	1	REVERSE ORIENTATION	£2,074.09	£850.38	£850.38

Special Notes
 Blind to be made to REVERSE ORIENTATION.

Delivery Address
 Aberdeen Blind Co Ltd
 32 Esslemont Avenue
 Aberdeen
 Aberdeenshire
 AB25 1SP
 01224 637609
 steven@aberddeen-blinds.co.uk

ORDER CONFIRMATION

UM 37587

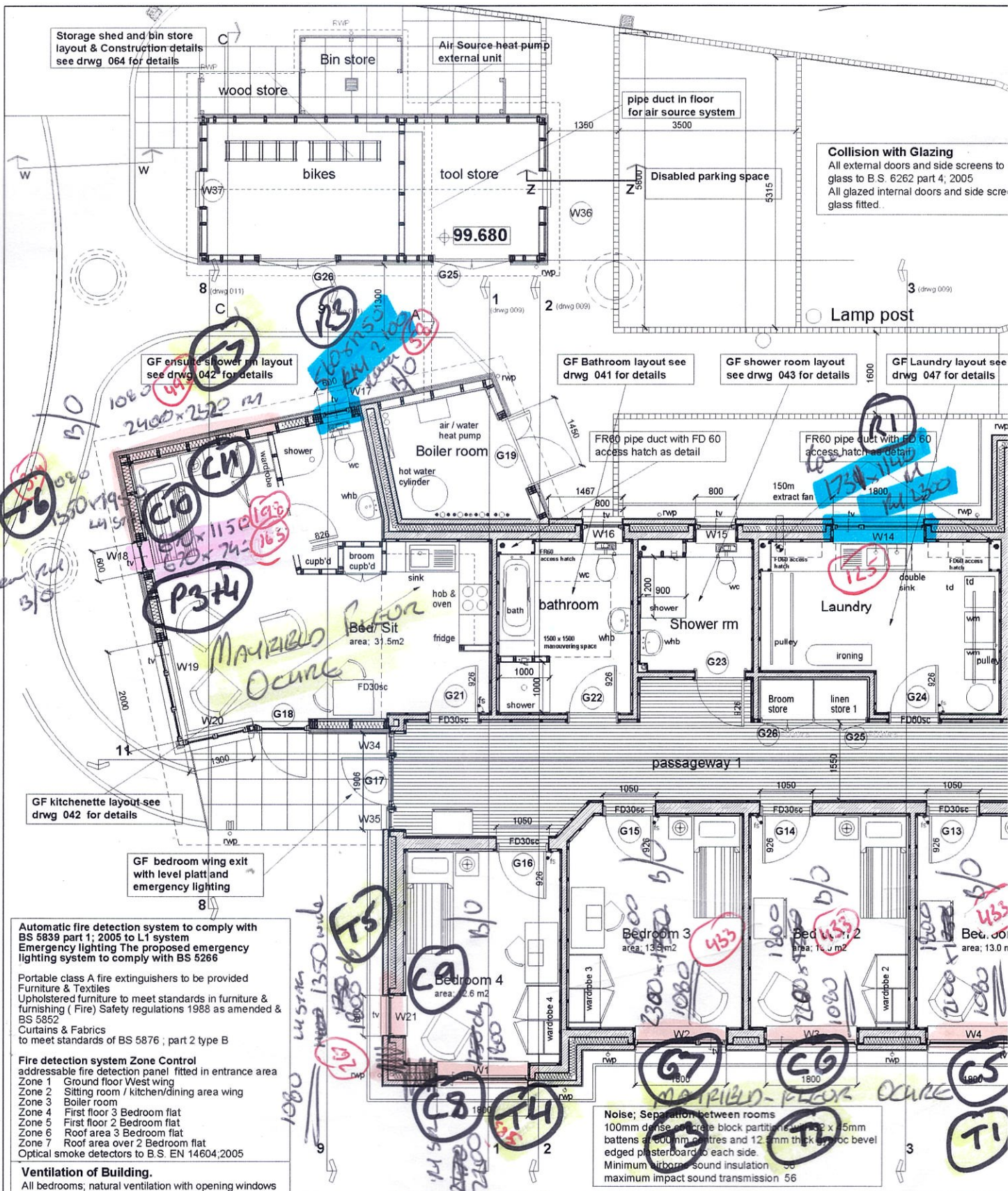


Customer: Aberdeen Blind Co Ltd **Order Date:** 29/4/2022
Contact Name: Steven Nimmo **Despatch Date:** 16/5/2022

Customer PO no.: NEWTON DEE 43321

Total Quantity **Total Price**
1 £862.88

Part No	Details	Length	Unit Price	Quantity	Total Price
	Standard Carriage		12.50	1	£12.50
Special Notes			Delivery Address		
Blind to be made to REVERSE ORIENTATION.			Aberdeen Blind Co Ltd 32 Esslemont Avenue Aberdeen Aberdeenshire AB25 1SP 01224 637609 steven@aberndeen-blinds.co.uk		
Spectrum Supply t/a Umbra, 31 Ystratt Road, Swansea West Business Park, Swansea, SA5 4BT Tel: 01792 562015 E-mail: sales@umbracladding.co.uk Company Registration No. 7317206			Please note that any changes to this order after you have received this order confirmation may incur a £13.40 admin charge, plus The above pricing excludes VAT Bank Details for BACS Payments - Account Number: 01874691 - Sort Code: 12-20-26		



Storage shed and bin store layout & Construction details see drwg 064 for details

Air Source heat pump external unit

pipe duct in floor for air source system

Collision with Glazing
All external doors and side screens to glass to B.S. 6262 part 4; 2005
All glazed internal doors and side screens glass fitted.

GF ensuite shower rm layout see drwg 042 for details

GF Bathroom layout see drwg 041 for details

GF shower room layout see drwg 043 for details

GF Laundry layout see drwg 047 for details

GF kitchenette layout see drwg 042 for details

GF bedroom wing exit with level platt and emergency lighting

Automatic fire detection system to comply with BS 5839 part 1; 2005 to L1 system
Emergency lighting The proposed emergency lighting system to comply with BS 5266

Portable class A fire extinguishers to be provided
Furniture & Textiles
Upholstered furniture to meet standards in furniture & furnishing (Fire) Safety regulations 1988 as amended & BS 5852
Curtains & Fabrics to meet standards of BS 5876 ; part 2 type B

Fire detection system Zone Control
addressable fire detection panel fitted in entrance area
Zone 1 Ground floor West wing
Zone 2 Sitting room / kitchen/dining area wing
Zone 3 Boiler room
Zone 4 First floor 3 Bedroom flat
Zone 5 First floor 2 Bedroom flat
Zone 6 Roof area 3 Bedroom flat
Zone 7 Roof area over 2 Bedroom flat
Optical smoke detectors to B.S. EN 14604;2005

Ventilation of Building.
All bedrooms; natural ventilation with opening windows not less than 1/30th of the floor area to each room and trickle ventilation with an opening area of 12000mm²
Bathroom & shower rooms
Fresh air inlet vents 10,000mm²
100mm diameter extract fans with intermittent extraction rate of not less than 15 litres per second.
Laundry room.
150mm diameter extract fan with intermittent extraction rate of not less than 30 litres per second.

Mechanical extract ventilation; to shower rooms, bathrooms and kitchen to comply with CIBSE guide B; 2001

Schedule of Ventilation Room

Room	Minimum ventilation rate (l/s)
Wc toilet	15
bathroom	30
shower rooms	30

Carbon Emissions
The Building has been designed with Renewable technologies including Air to water Source heat pump providing heating and hot water and a 4.8kw photovoltaic solar panel system.
Air Tightness Test
Test to be carried out at completion of Building and results forwarded to complete Energy performance certificate.
Energy performance Certificate
On completion of project final Energy Performance certificate to be fixed in Building and copy to Building control
Statement of Sustainability
Certificate showing Sustainability level achieved to be displayed in the completed building.

Noise; Separation between rooms
100mm dense concrete block partition with 2 x 45mm battens at 600mm centres and 12.5mm thick acoustic bevel edged plasterboard to each side.
Minimum airborne sound insulation 50
maximum impact sound transmission 56

Cavity Barriers
Cavity barriers of 30 min fire openings, external corners : dpc.
Max distance between cavity to concrete block construction timber linings externally.

Proposed Ground floor Layout

5 Bedroom accommodation

Scale ; 1;50 G.f. area ; 312m²

Services fire protection
All pipes passing through first floor slab to have a Rockwool Firepro fire stop collars fitted to underside of slab including 110mm soil stacks.
Small pipes to have Rockwool intumescent pipe wrap around pipes passing through block walls
Rockwool Firestop high expansion intumescent seal to gaps at service ducts.
Rockwool Firepro Intumescent expansion joint seal at junction of concrete block walls to underside of concrete first floor slab.

No	date	Amendment
A	25/02/22	Building warrant amendment items 3 & 14
ND21.C.004	20/03/2020	Construction Issue
A	27/10/2020	Amendment to Bike & Tool store building layout
A	23/02/2022	As built drawing issue

Lonsdale Mono and single pitched rooflights
 Modular factory glazed panel system 3no panels
 single pitched rooflight 1800 x 1350mm
 Manufacturer ; Lonsdale Metal Company Ltd Unit 40 Millmead Industrial Centre,
 Mill Mead Road, London N17 9QU System to be manufactured to ISO 9001: 2000
 Product reference : A74
 Finish, coated aluminium with RAL colour
 Glazing details: Double glazed low E argon filled insulating glass units, laminated inner pane and toughened outer clear glass.
 Rooflight installation to be carried out by a trained and approved installer.

Roller Blinds

Pleated Blinds

Roman Blinds

Curtains

1080 Tracks

Simon Rm 1080

Standing seam Stainless steel type with 25 x 3 clips with screw fixing to timber substructure.
 Plastic open mesh air grid underlay.

Balustrade (protective barrier)
 1100mm high Balustrade to have no gaps greater than 95mm between balusters.

F.F. shower rm layout see drwg 045 for details

Escape window
 Each apartment to first floor to have escape window with a minimum width 450mm and min 0.75m2 opening area.

Lonsdale Mono and single pitched rooflights
 Modular factory glazed panel system 4no panels
 single pitched rooflights 600mm wide (2400 x 1500mm)
 Manufacturer ; Lonsdale Metal Company Ltd Unit 40 Millmead Industrial Centre,
 Mill Mead Road, London N17 9QU System to be manufactured to ISO 9001: 2000
 Product reference : A74
 Finish, coated aluminium with RAL colour
 Glazing details: Double glazed low E argon filled insulating glass units, laminated inner pane and toughened outer clear glass.
 Rooflight installation to be carried out by a trained and approved installer.

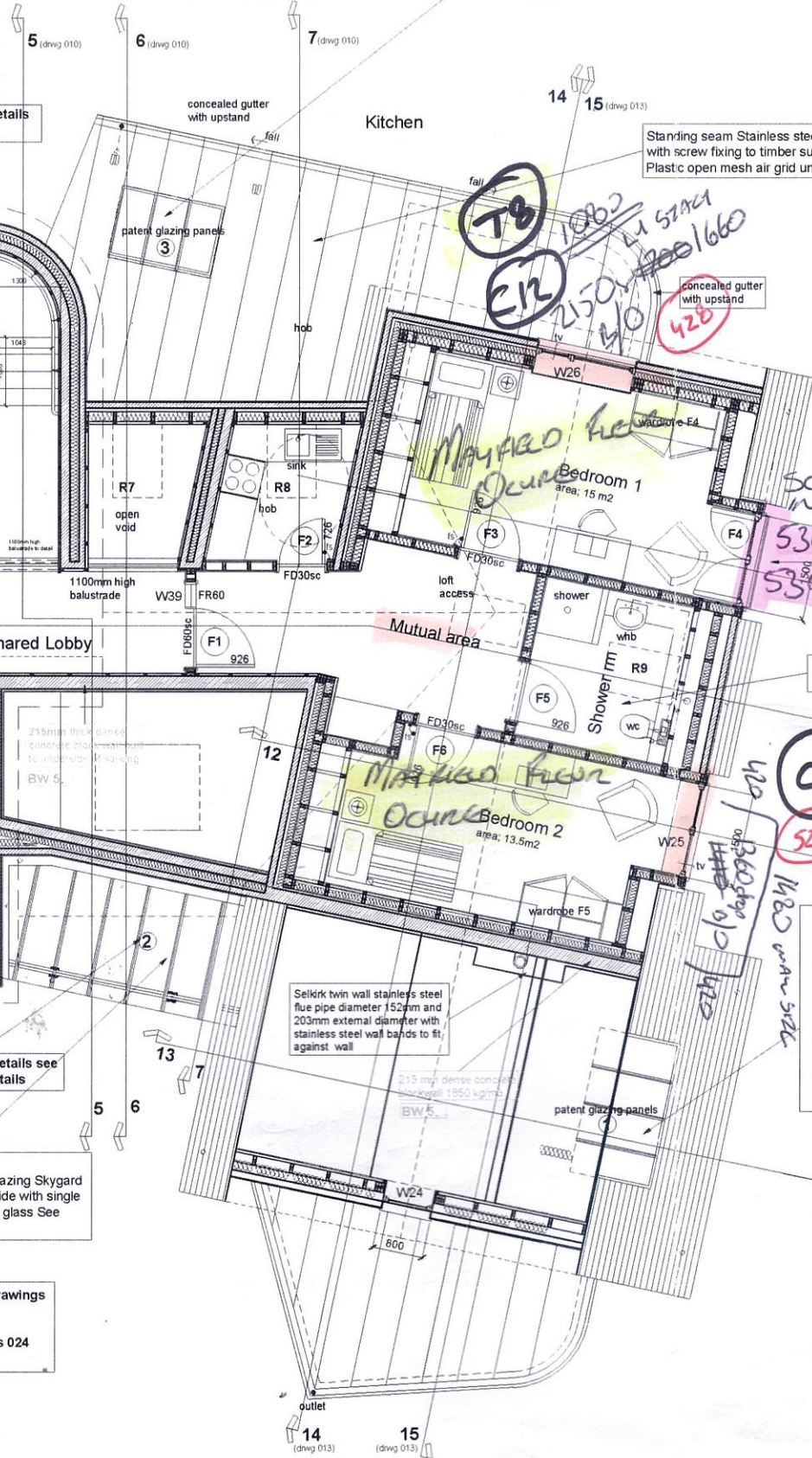
Proposed HMO Accommodation at O'Tell Site, Newton Dee, Bieldside, Aberdeen AB15 9DX for Newton Dee Camphill Community Ltd.

Proposed First floor layout

SCALE	1:50 @ A1	DRWG NO	ND21.AB.004	REV	A
DATE	23/02/2022				

Camphill Architecture and Development
 Newton Dee, Bieldside, Aberdeen AB15 9DX (01224) 867 450
 camphill.architecture@newtondee.org.uk
 The Studio, Ainthorpe lane, Whitby, N. Yorks YO21 2NJ (01287) 660 754

engineers details
 rise + going = 603.32mm)
 n high.
 een stair pitch and ceiling
 ure formed with concrete
 60min fr.
 than 95mm between
 op and bottom of stair



awings
 024

